

STA 110+0 to 117+0+48									
LEFT					RIGHT				
Station	W.	Grade	Deflection	W.	Station	W.	Grade	Deflection	W.
110+00	11.00	792.23		11.00	110+00	11.00	792.23		11.00
110+10	11.10	792.24		11.10	110+10	11.10	792.24		11.10
110+20	11.20	792.25		11.20	110+20	11.20	792.25		11.20
110+30	11.30	792.26		11.30	110+30	11.30	792.26		11.30
110+40	11.40	792.27		11.40	110+40	11.40	792.27		11.40
110+50	11.50	792.28		11.50	110+50	11.50	792.28		11.50
110+60	11.60	792.29		11.60	110+60	11.60	792.29		11.60
110+70	11.70	792.30		11.70	110+70	11.70	792.30		11.70
110+80	11.80	792.31		11.80	110+80	11.80	792.31		11.80
110+90	11.90	792.32		11.90	110+90	11.90	792.32		11.90
110+98	11.98	792.33		11.98	110+98	11.98	792.33		11.98

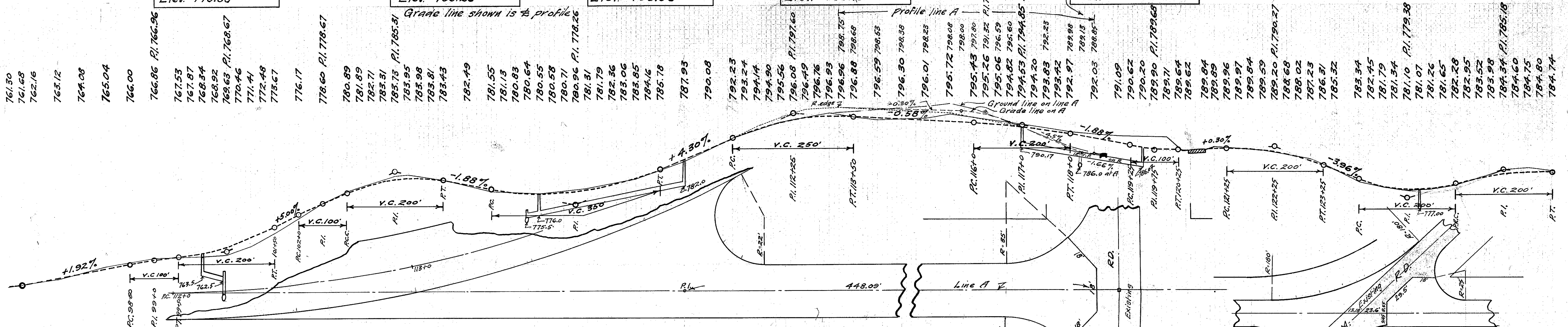
BM #24 Sta. 101+66  
S. cap bolt Fire Hyd.  
22' to L of  $\pm$ .  
Elev. 773.88

BM #25 Sta. 105+55  
Spike in root 12" M.  
20' to L of  $\pm$ .  
Elev. 783.29

BM #26 Sta. 110+97  
Spike in side 15" M.  
18' to L of  $\pm$ .  
Elev. 795.53

BM #27 Sta. 114+75  
Spike in side 15" M.  
65' to R of  $\pm$ .  
Elev. 799.15

BM #28 Sta. 120+51  
Spike in root 15" Elm.  
36' to L of  $\pm$ .  
Elev. 791.65



Station	Exc. Emb.	Exc. Emb +25% Waste	Exc. Emb.	Exc. Emb +25% Waste	Exc. Emb.	Exc. Emb +25% Waste	Exc. Emb.	Exc. Emb +25% Waste
96	761.2		761.2		761.2		761.2	
97	762.8	567.5	762.8	567.5	762.8	567.5	762.8	567.5
98	765.4	431.4	765.4	431.4	765.4	431.4	765.4	431.4
99	767.1	3	767.1	3	767.1	3	767.1	3
100	767.4		767.4		767.4		767.4	
101	767.9		767.9		767.9		767.9	
102	769.6		769.6		769.6		769.6	
103	772.2		772.2		772.2		772.2	
104	775.4		775.4		775.4		775.4	
105	778.8		778.8		778.8		778.8	
106	781.1		781.1		781.1		781.1	
107	784.4		784.4		784.4		784.4	
108	787.2		787.2		787.2		787.2	
109	791.0		791.0		791.0		791.0	
110	793.7		793.7		793.7		793.7	
111	796.1		796.1		796.1		796.1	
112	798.5		798.5		798.5		798.5	
113	799.1		799.1		799.1		799.1	
114	799.6		799.6		799.6		799.6	
115	799.6		799.6		799.6		799.6	
116	799.6		799.6		799.6		799.6	
117	799.6		799.6		799.6		799.6	
118	799.6		799.6		799.6		799.6	
119	799.6		799.6		799.6		799.6	
120	799.6		799.6		799.6		799.6	
121	799.6		799.6		799.6		799.6	
122	799.6		799.6		799.6		799.6	
123	799.6		799.6		799.6		799.6	
124	799.6		799.6		799.6		799.6	
125	799.6		799.6		799.6		799.6	
126	799.6		799.6		799.6		799.6	
127	799.6		799.6		799.6		799.6	
128	799.6		799.6		799.6		799.6	