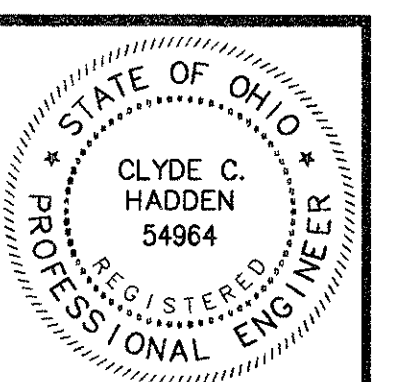
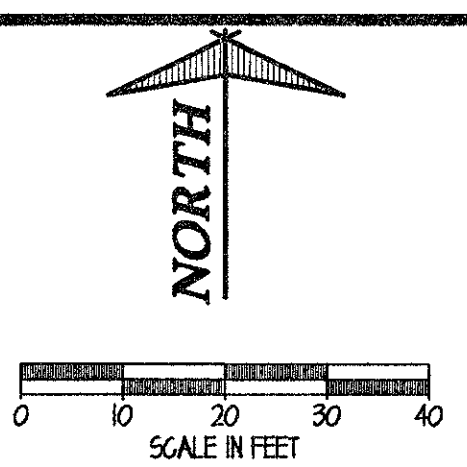


**SURVEY CONTROL POINT**  
 MON. BOX @ ANGLE BREAK  
 N: 721627.18  
 E: 2255567.51  
 STA: 57+78.12

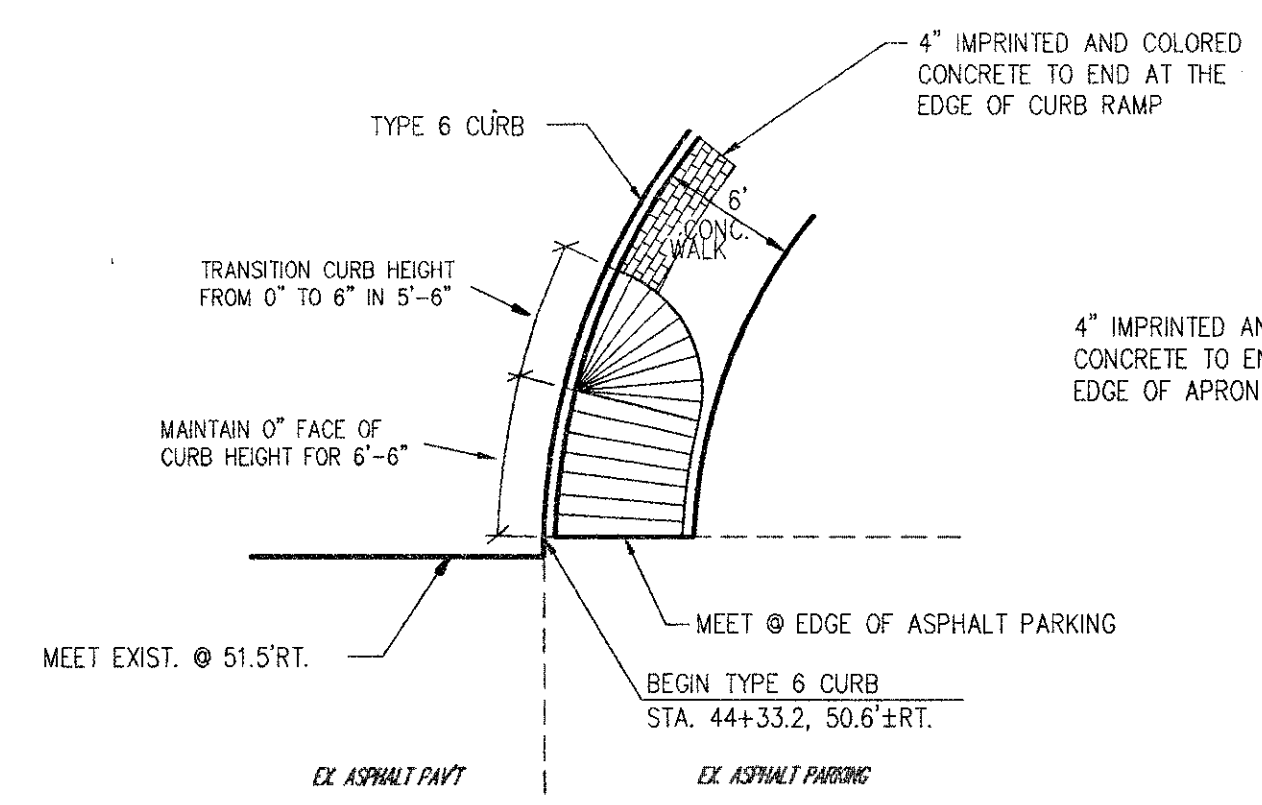
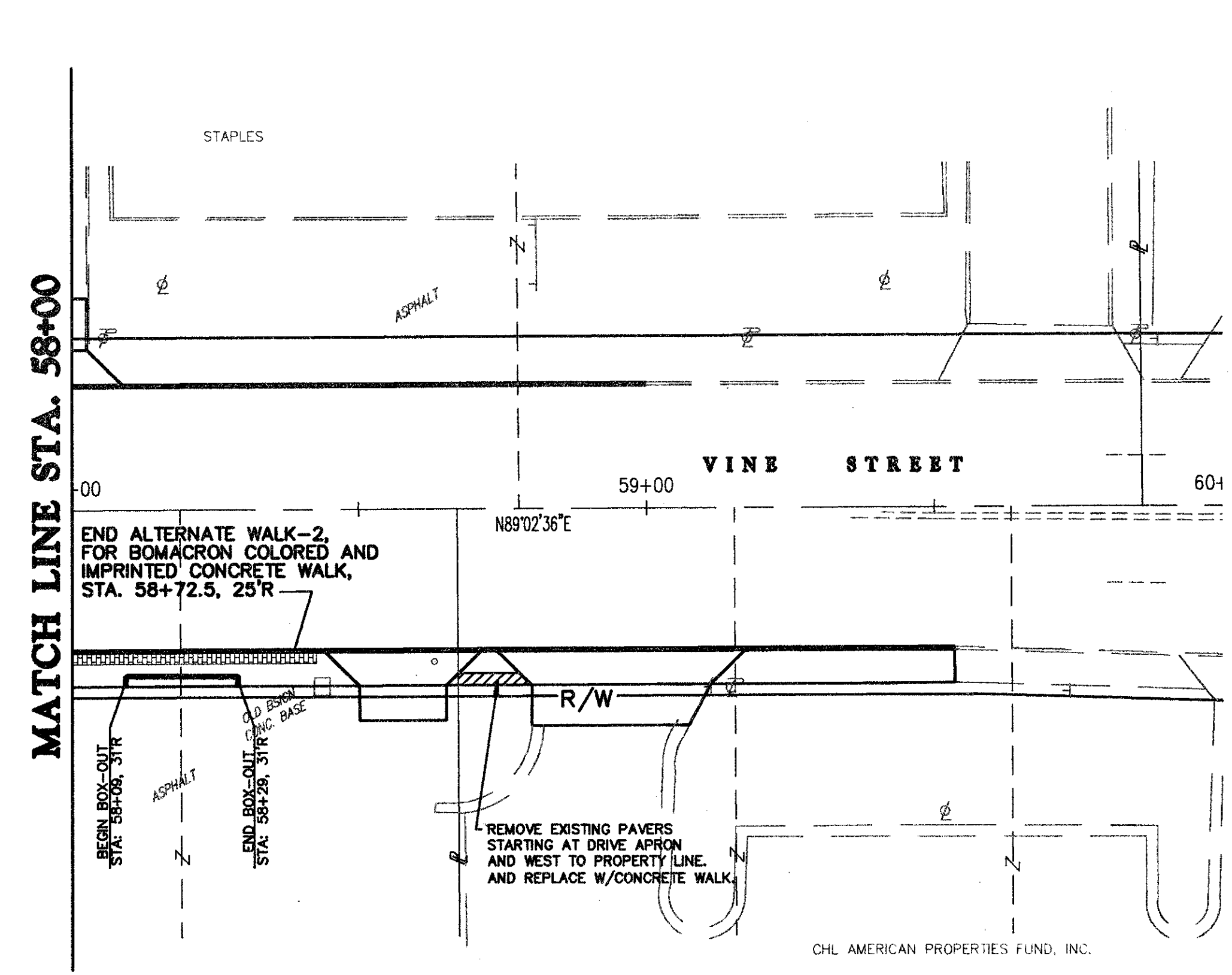
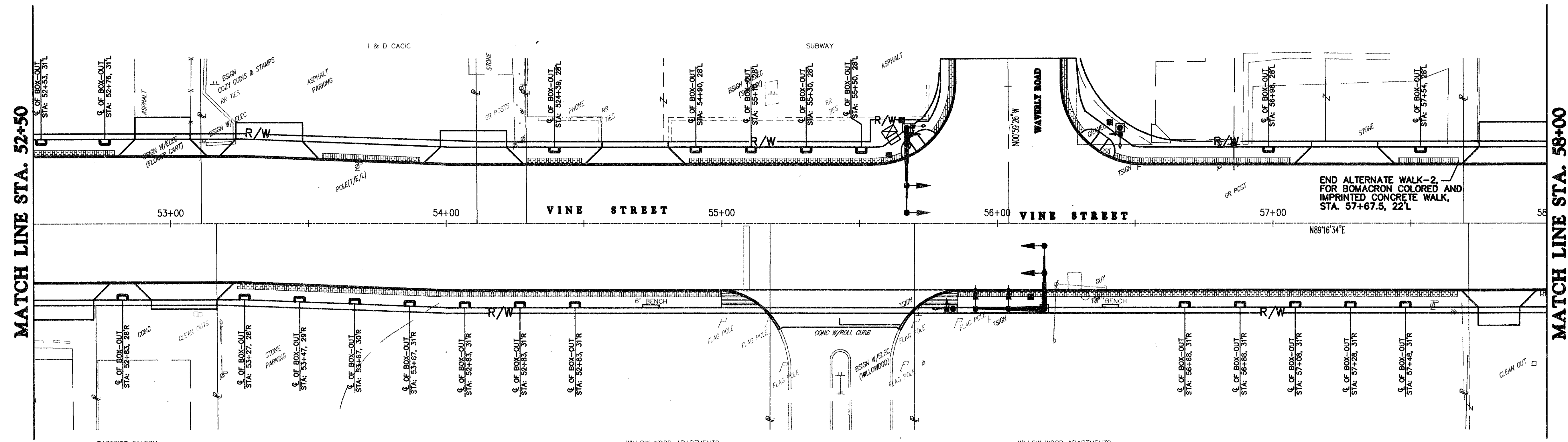


SUBMISSIONS / REVISIONS

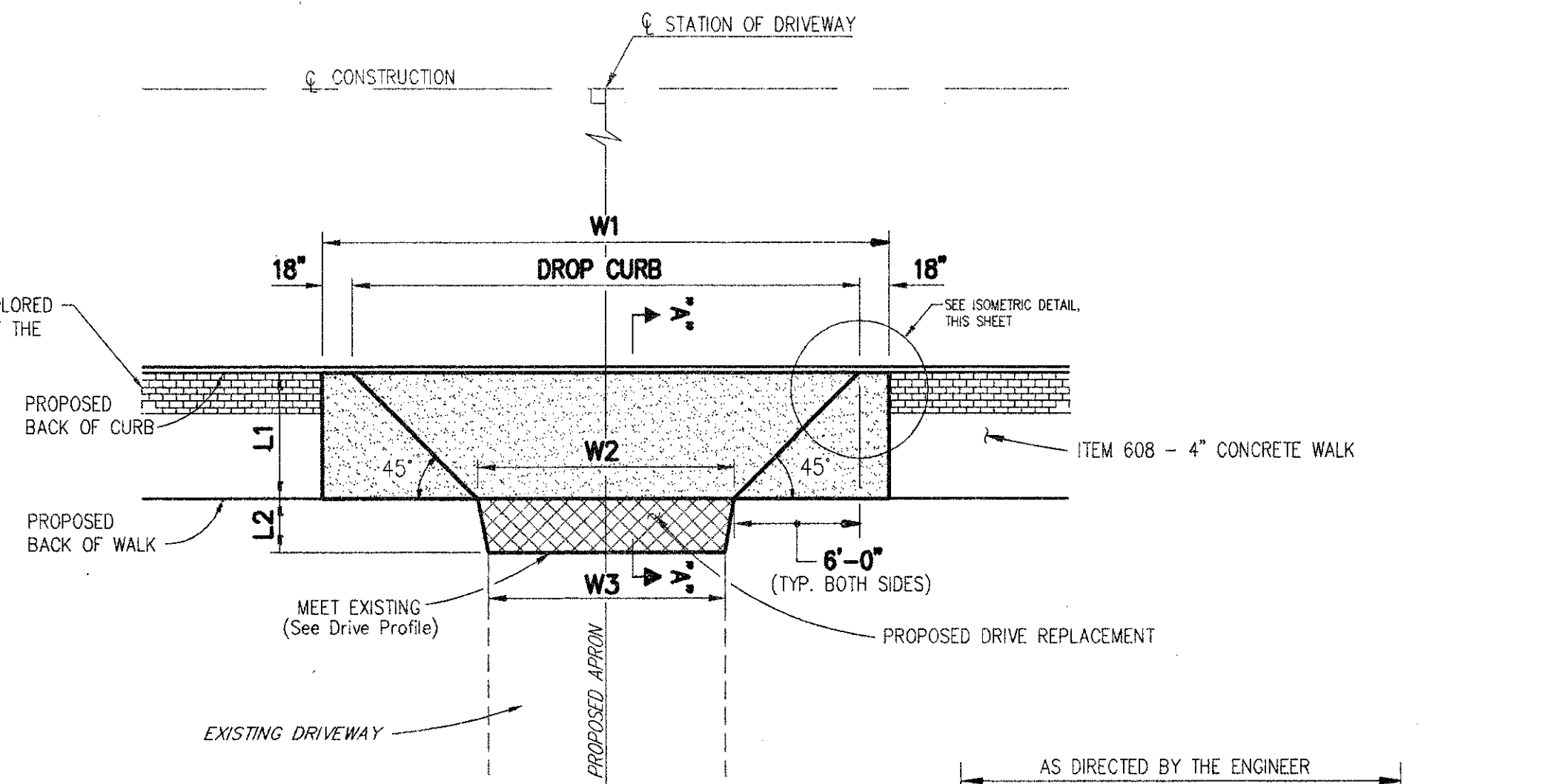

**VINE STREET (S.R. 640) ROADWAY  
 WIDENING IMPROVEMENTS**  
 CITY OF EASTLAKE, LAKE COUNTY, OHIO  
**ALTERNATE STREETSCAPE BID ITEMS  
 PLAN SHEET**  
 STA. 52+50 TO STA. END

**CT Consultants, Inc.**  
 Engineers • Architects • Planners  
 Willoughby • Mentor • Columbus • North Canton • Youngstown

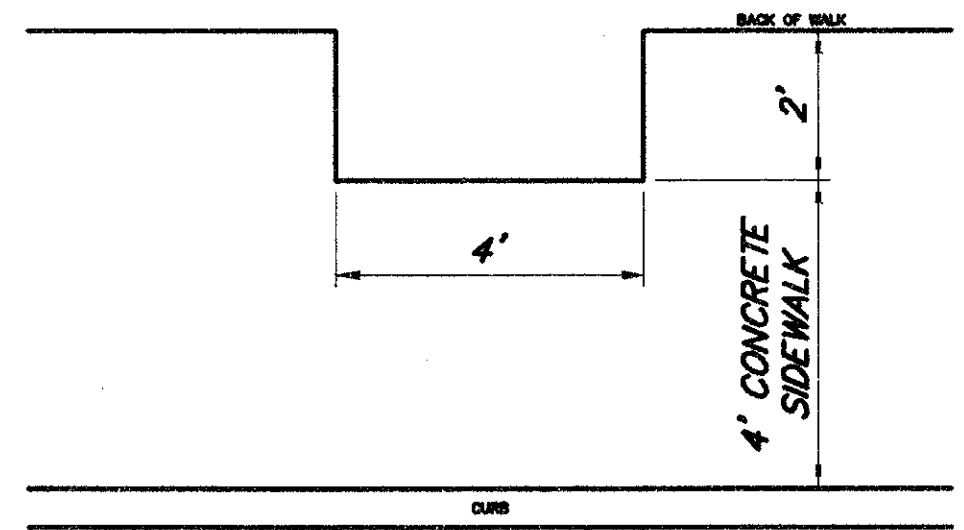
DATE: MARCH, 2000  
 DRAWN BY: K.L.D.  
 CHECKED BY: J.M.B.  
 APPROVED BY: \_\_\_\_\_  
 SCALE: 1" = 20'  
 HORIZ. VERT. \_\_\_\_\_  
 CONTRACT NO. 9840624  
 SHEET NO. 52 OF 52



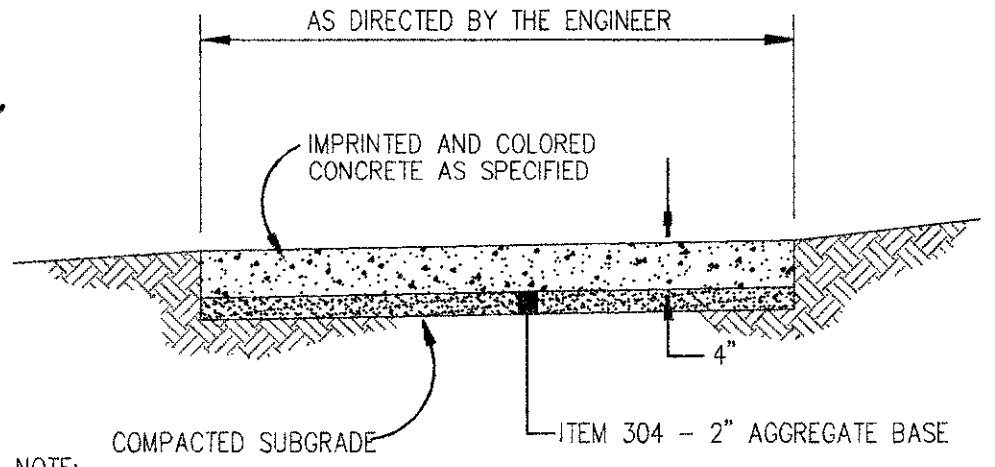
**CURB RAMP, AS PER PLAN DETAIL**  
 NO SCALE



**TYPICAL DRIVE APRON DETAIL**  
 NO SCALE



**TYPICAL BOX-OUT DETAIL**  
 NO SCALE



**TYPICAL IMPRINTED AND COLORED CONCRETE SIDEWALK DETAIL**  
 (NOTE: THE COST OF THE SUBGRADE COMPACTION AND THE 2" AGGREGATE BASE SHALL BE INCLUDED IN THE UNIT PRICE BID FOR ITEM 608 - CONCRETE WALK)

**DIMENSIONS ARE TYPICAL UNLESS OTHERWISE SHOWN ON THE PLAN.**

COPYRIGHT - CT CONSULTANTS INC. H:\1999\9907623\dwg\ALTA-9.dwg 06/13/2000 09:06:22 AM EDT