

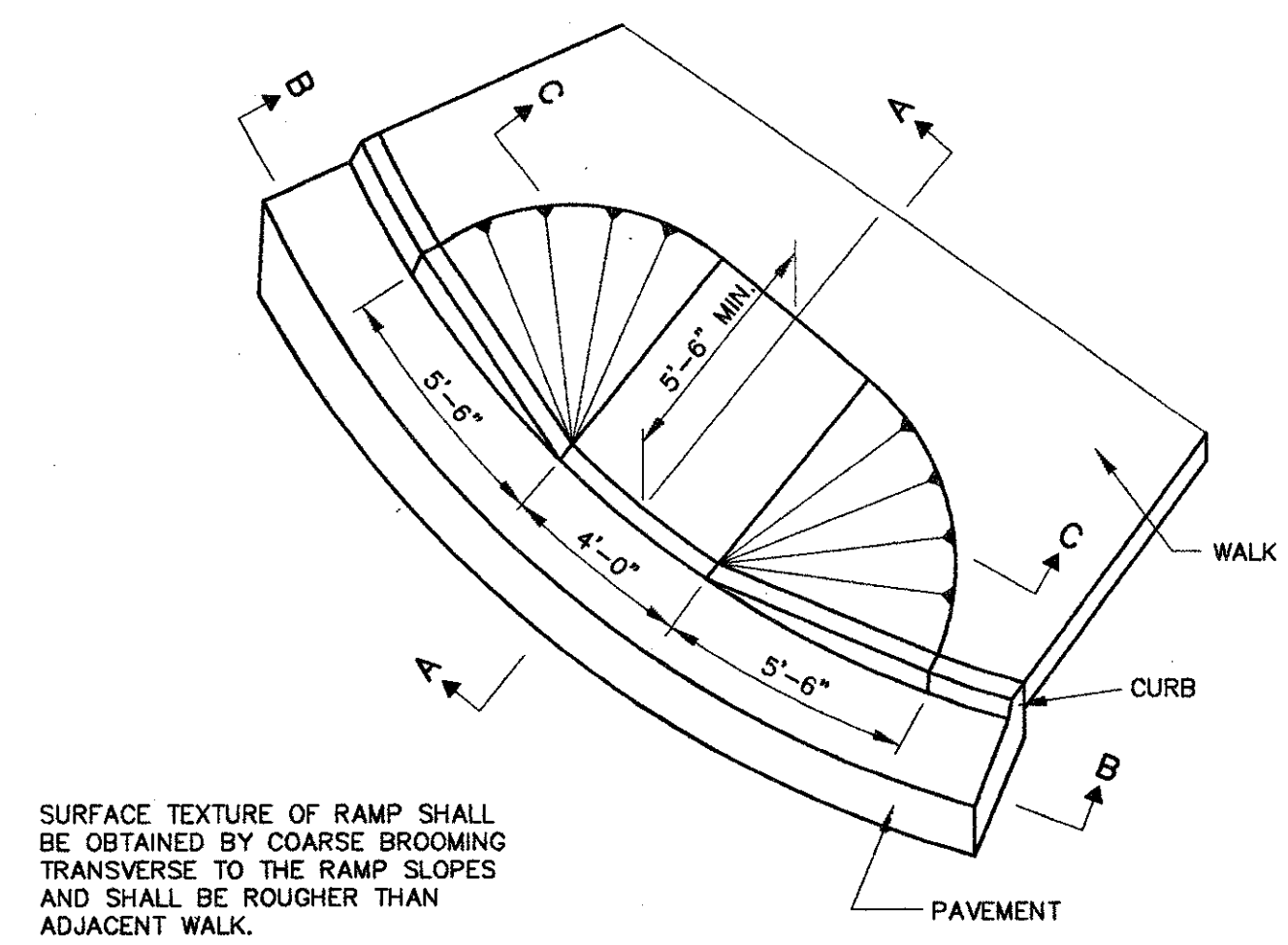
SUBMISSIONS / REVISIONS

VINE STREET (S.R. 640) ROADWAY  
WIDENING IMPROVEMENTS  
CITIES OF WILLOWICK & EASTLAKE, LAKE COUNTY, OHIO

**MISCELLANEOUS DETAILS**

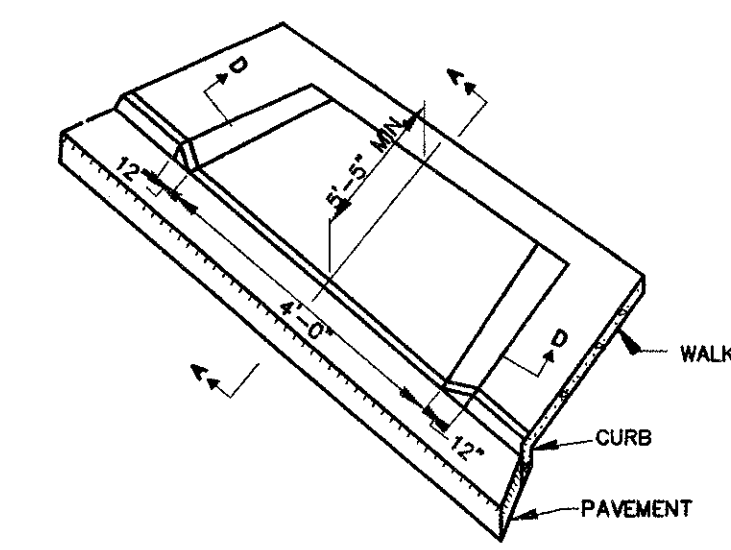
**CT Consultants, Inc.**  
Engineers • Architects • Planners  
Willoughby • Mentor • Columbus • North Canton • Youngstown

DATE: JANUARY, 2000  
DRAWN BY: J.L.C.  
CHECKED BY: C.C.H.  
APPROVED BY:  
SCALE:  
HOR.: N.T.S.  
VERT.:  
CONTRACT NO.:  
**9840624**  
SHEET NO. OF  
**42 52**

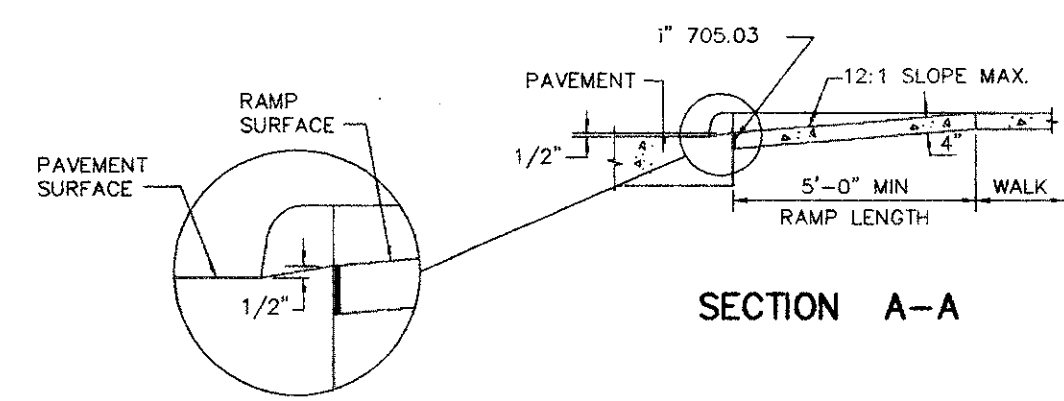


SURFACE TEXTURE OF RAMP SHALL BE OBTAINED BY COARSE BROOMING TRANSVERSE TO THE RAMP SLOPES AND SHALL BE ROUGHER THAN ADJACENT WALK.

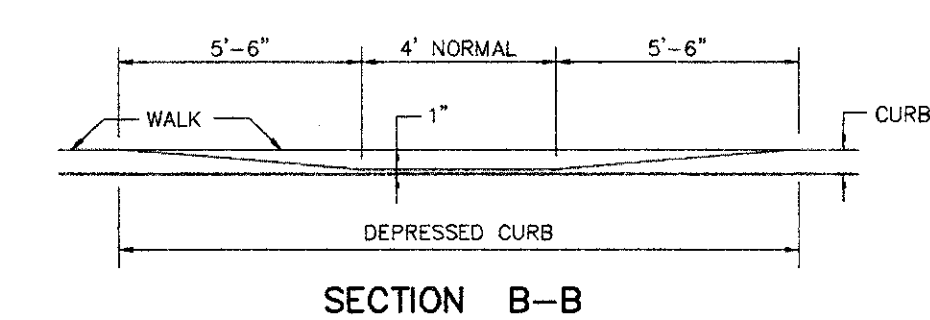
**TYPE 1 CURB RAMP**



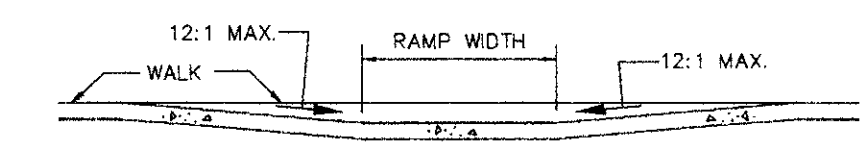
**TYPE 2 CURB RAMP**



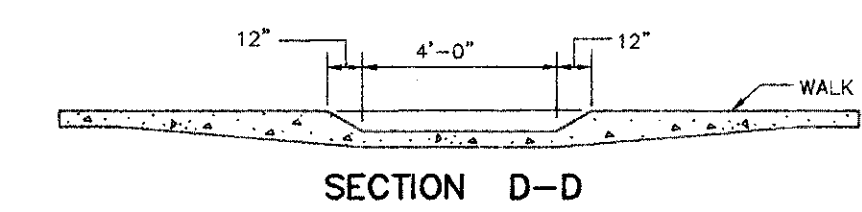
**SECTION A-A**



**SECTION B-B**

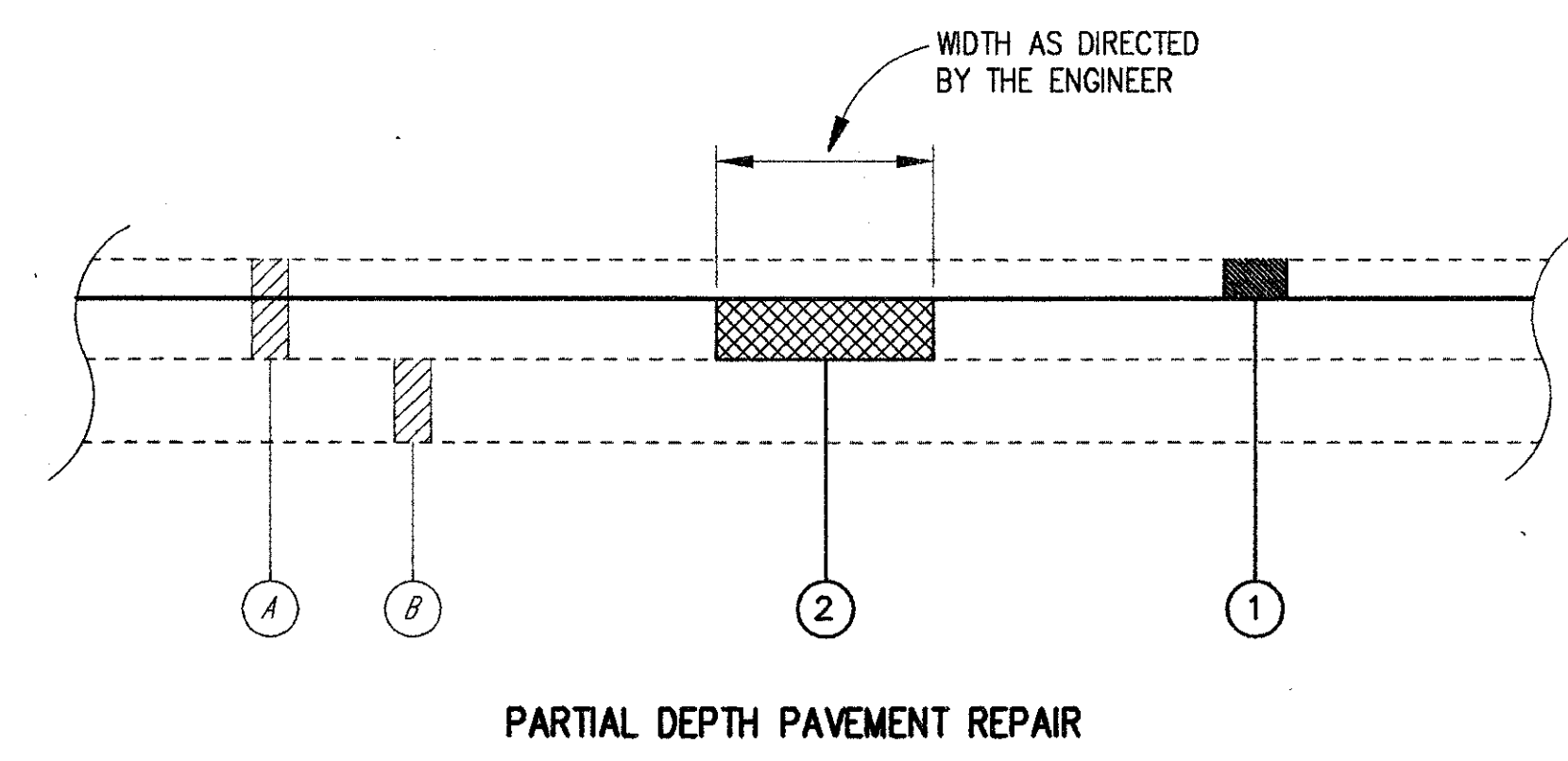


**SECTION C-C**

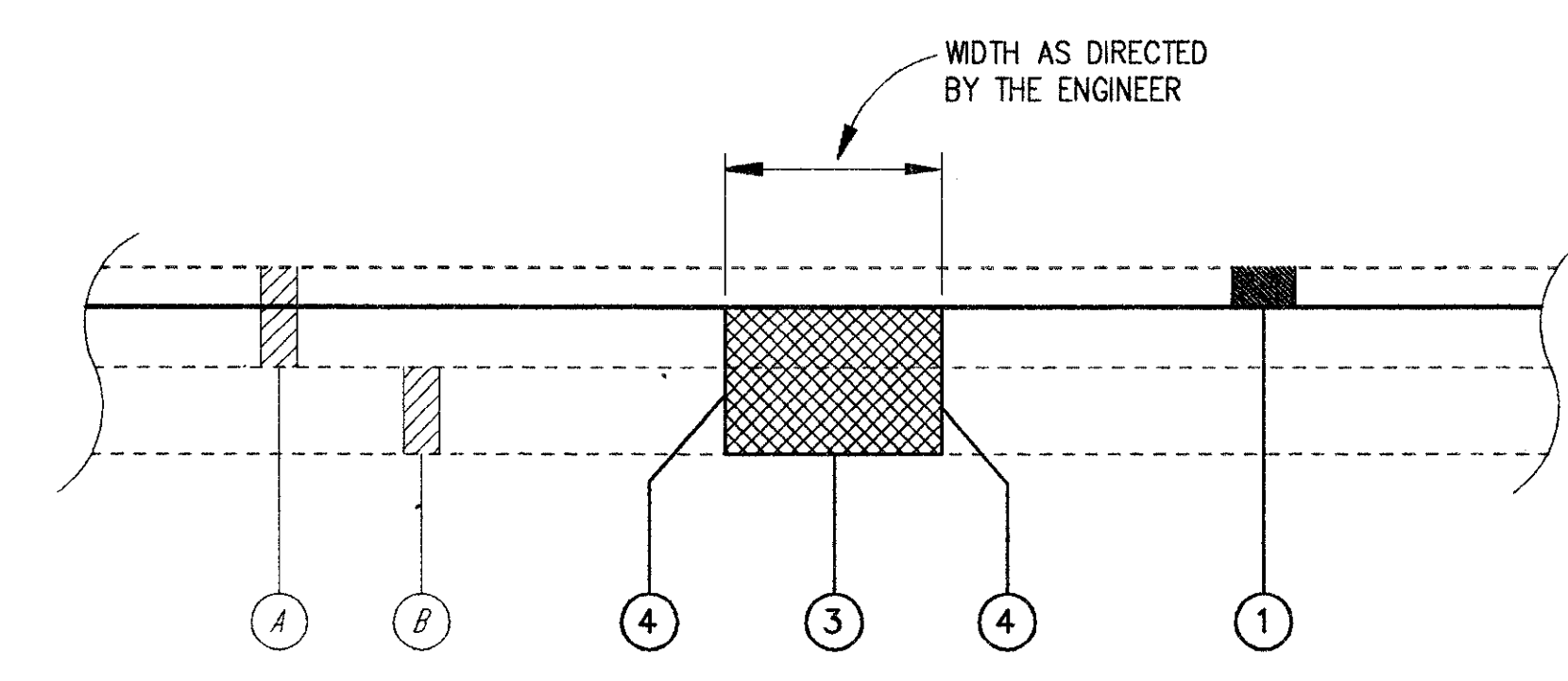


**SECTION D-D**

**CURB RAMP DETAILS**



**PARTIAL DEPTH PAVEMENT REPAIR**



**FULL DEPTH RIGID PAVEMENT REMOVAL & FLEXIBLE REPLACEMENT**

**LEGEND**

- ① ITEM 254 - PAVEMENT PLANING, BITUMINOUS (1-1/2" Avg. Depth)
- ② ITEM 251 - PARTIAL DEPTH PAVEMENT REPAIR
- ③ ITEM 252 - FULL DEPTH RIGID PAVEMENT REMOVAL & FLEXIBLE REPLACEMENT
- ④ ITEM 252 - FULL DEPTH PAVEMENT SAWING (See Note)
- Ⓐ EXISTING ASPHALT CONCRETE (THICKNESS VARIES)
- Ⓑ EXISTING CONCRETE AND/OR BRICK BASE (THICKNESS VARIES)

**ESTIMATED QUANTITIES FOR:**

**ITEM 251 - PARTIAL DEPTH PAVEMENT REPAIR**  
= TOTAL PAVEMENT AREA x REPAIR AREA PERCENTAGE  
= 10,500 SQ. YDS. x 5%  
= 525 SQ. YDS.

**ITEM 252 - FULL DEPTH RIGID PAVEMENT REMOVAL & FLEXIBLE REPLACEMENT**  
= TOTAL PAVEMENT AREA x REPAIR AREA PERCENTAGE  
= 10,500 SQ. YDS. x 5%  
= 525 SQ. YDS.

NOTE: THE COST OF FULL DEPTH PAVEMENT SAWING SHALL BE INCLUDED IN THE UNIT BID PRICE FOR ITEM 252 - FULL DEPTH RIGID PAVEMENT REMOVAL & FLEXIBLE REPLACEMENT.

**SUBBASE/SUBGRADE FAILURES**

IF AFTER FULL DEPTH REMOVAL OF THE EXISTING PAVEMENT, THE ENGINEER DETERMINES THAT THE SUBBASE OR SUBGRADE HAS FAILED OR IS PUMPING, HE SHALL DIRECT THE CONTRACTOR TO EXCAVATE THE UNSUITABLE MATERIAL AND REPLACE IT WITH ITEM 304 - AGGREGATE BASE AS NECESSARY. THE FOLLOWING QUANTITIES HAVE BEEN INCLUDED IN THE PLANS FOR USE AS DIRECTED BY THE ENGINEER.

ITEM 203 - EXCAVATION, NOT INCLUDING EMBANKMENT CONSTRUCTION 30 CU. YDS.  
ITEM 304 - AGGREGATE BASE 30 CU. YDS.

**PAVEMENT REPAIR DETAILS & ESTIMATED QUANTITIES**

COPYRIGHT - DATE: 01-04-00 08:18 CT CONSULTANTS INC. H:\1999\684624\DWG\9840624.DWG PLOT:1-20