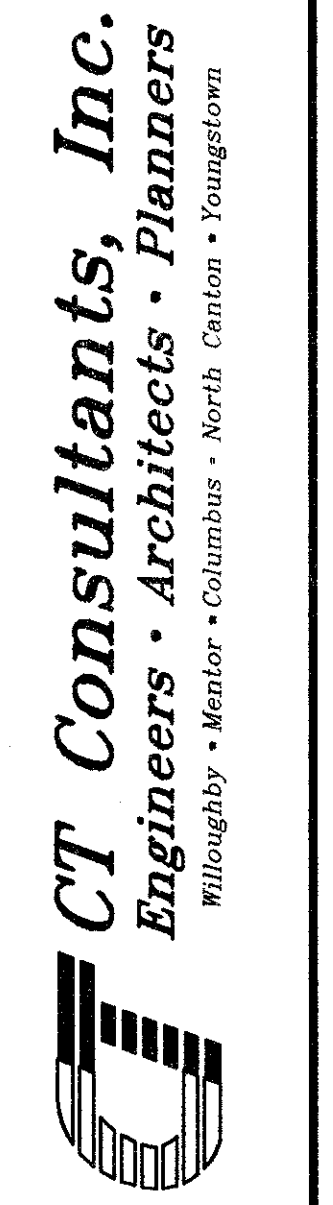


SUBMISSIONS / REVISIONS

**VINE STREET (S.R. 640) ROADWAY  
WIDENING IMPROVEMENTS**  
CITIES OF WILLOWICK & EASTLAKE, LAKE COUNTY, OHIO



DATE: OCTOBER, 1999

DRAWN BY: J.J.C.

CHECKED BY: C.C.H.

APPROVED BY:

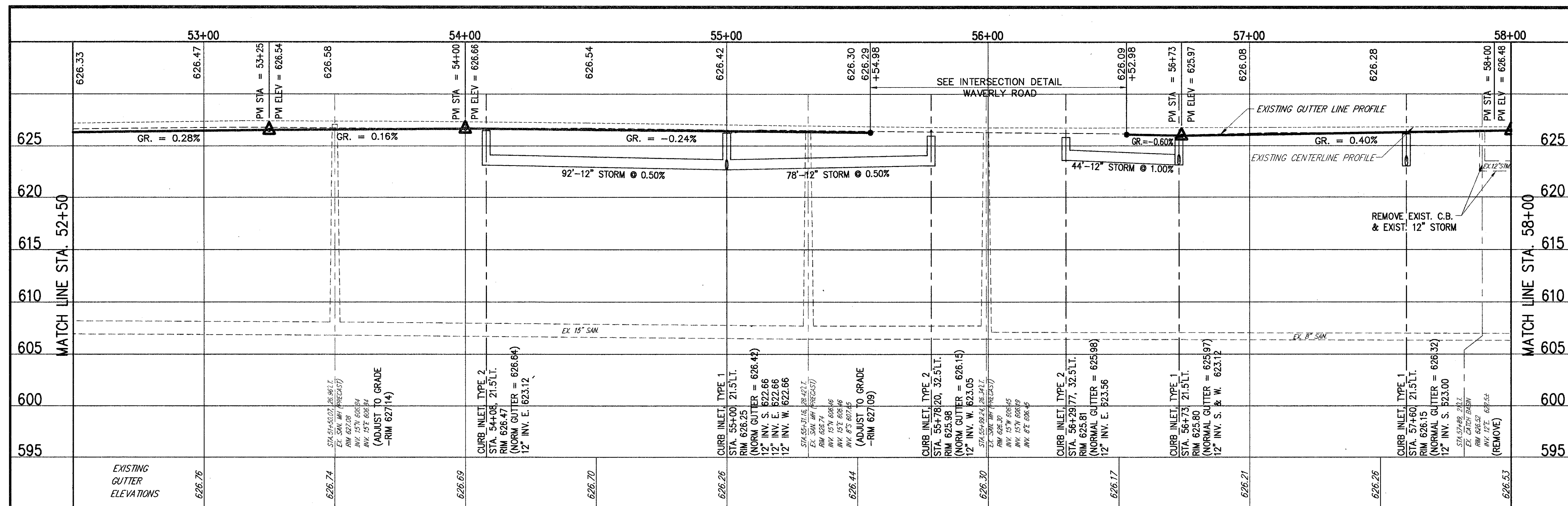
SCALE:  
HOR: 1" = 20'  
VERT: 1" = 5'

CONTRACT NO.

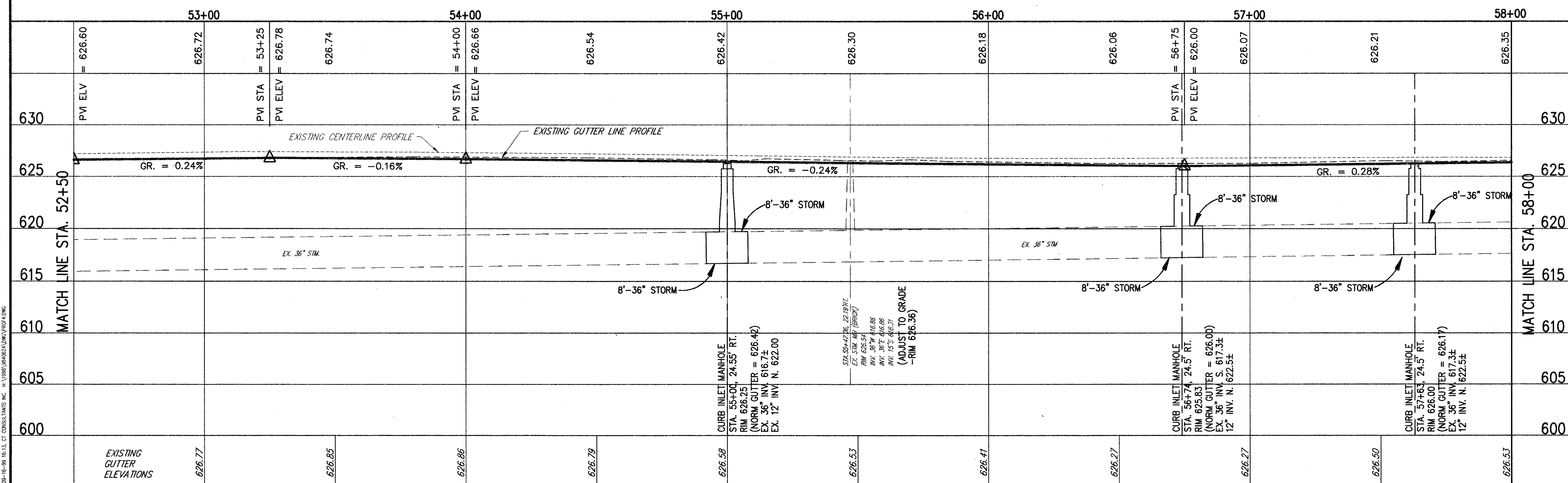
**9840624**

SHEET NO. OF

**16 52**



**LEFT SIDE GUTTER PROFILE**



**RIGHT SIDE GUTTER PROFILE**

COPYRIGHT - DATE: 08-16-99 10:13. CT CONSULTANTS, INC. H:\1999\ROADWAY\WV\9840624.DWG