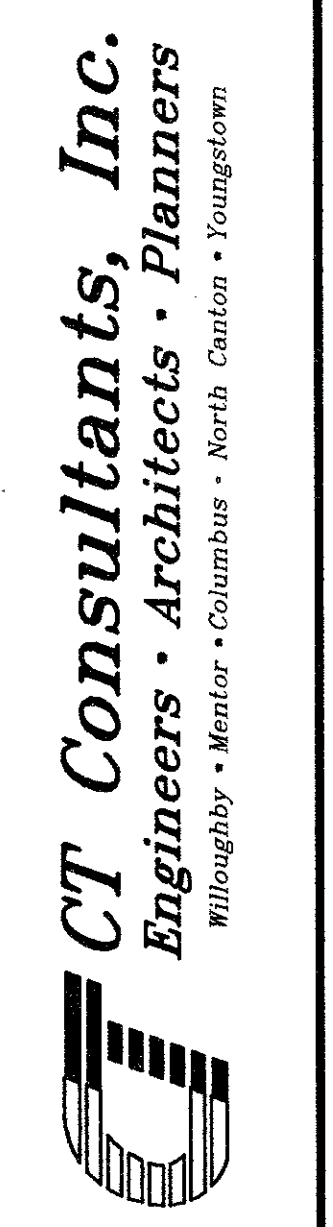
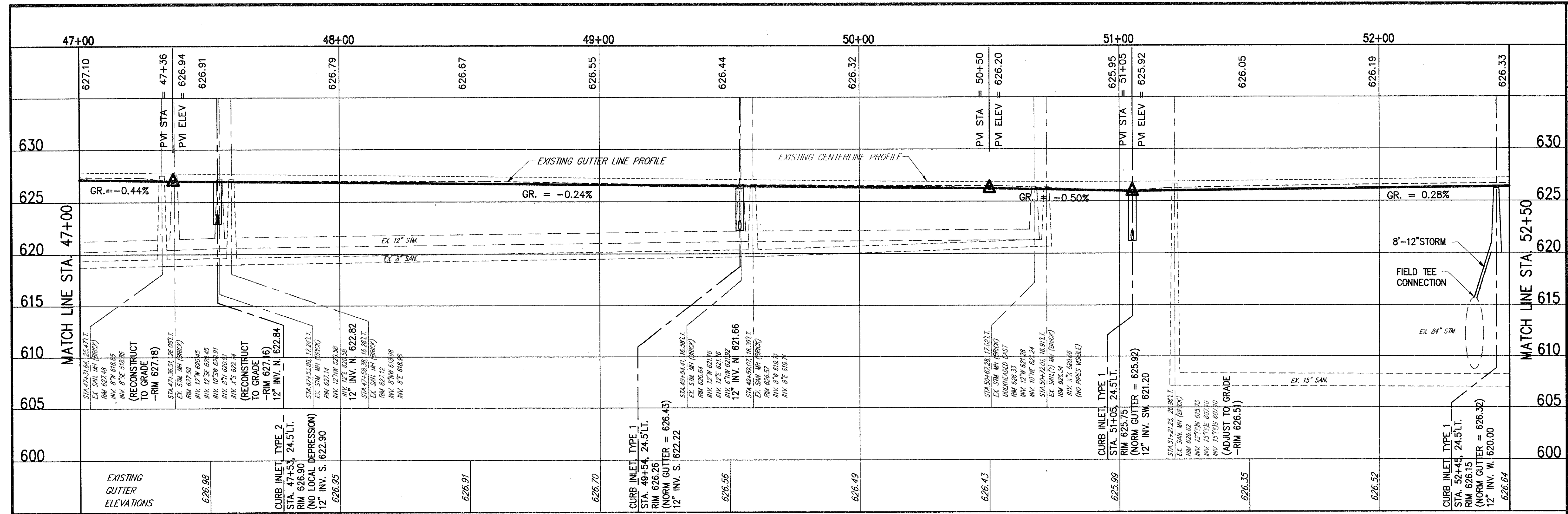


SUBMISSIONS / REVISIONS	

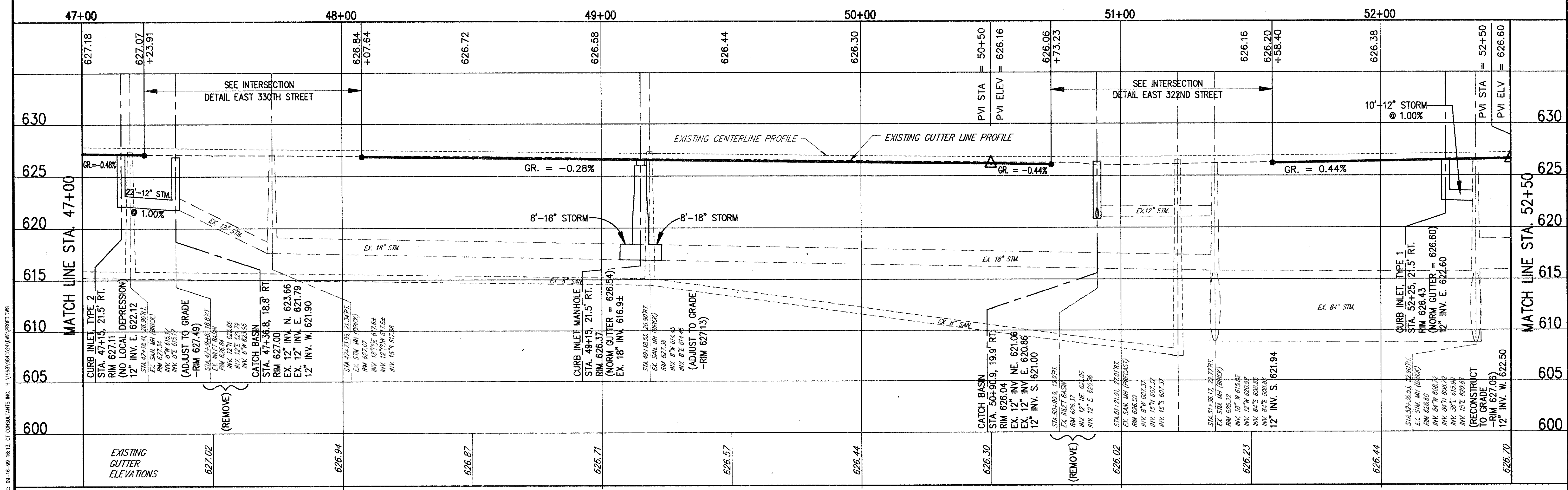
**VINE STREET (S.R. 640) ROADWAY  
WIDENING IMPROVEMENTS**  
CITIES OF WILLOWICK & EASTLAKE, LAKE COUNTY, OHIO



DATE:	OCTOBER, 1999
DRAWN BY:	J.J.C.
CHECKED BY:	C.C.H.
APPROVED BY:	
SCALE:	HOR. 1" = 20' VERT. 1" = 5'
CONTRACT NO.	9840624
SHEET NO.	14 OF 52



**LEFT SIDE GUTTER PROFILE**



**RIGHT SIDE GUTTER PROFILE**

COPYRIGHT - DATE: 09-16-99 10:13, CT CONSULTANTS INC. H:\9840624\DWG\PROF.DWG