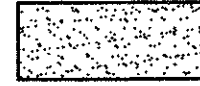

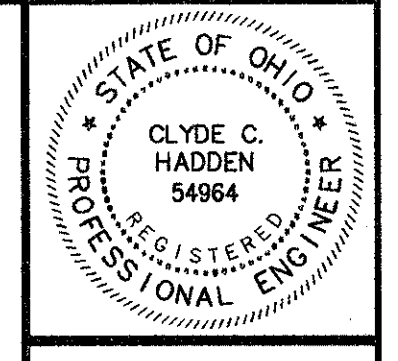
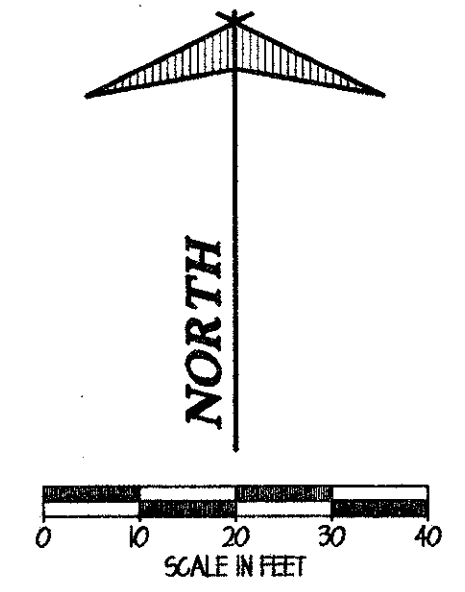


FOR INTERSECTION GRADING AND GEOMETRIC DETAILS, SEE SHEETS 19 & 20

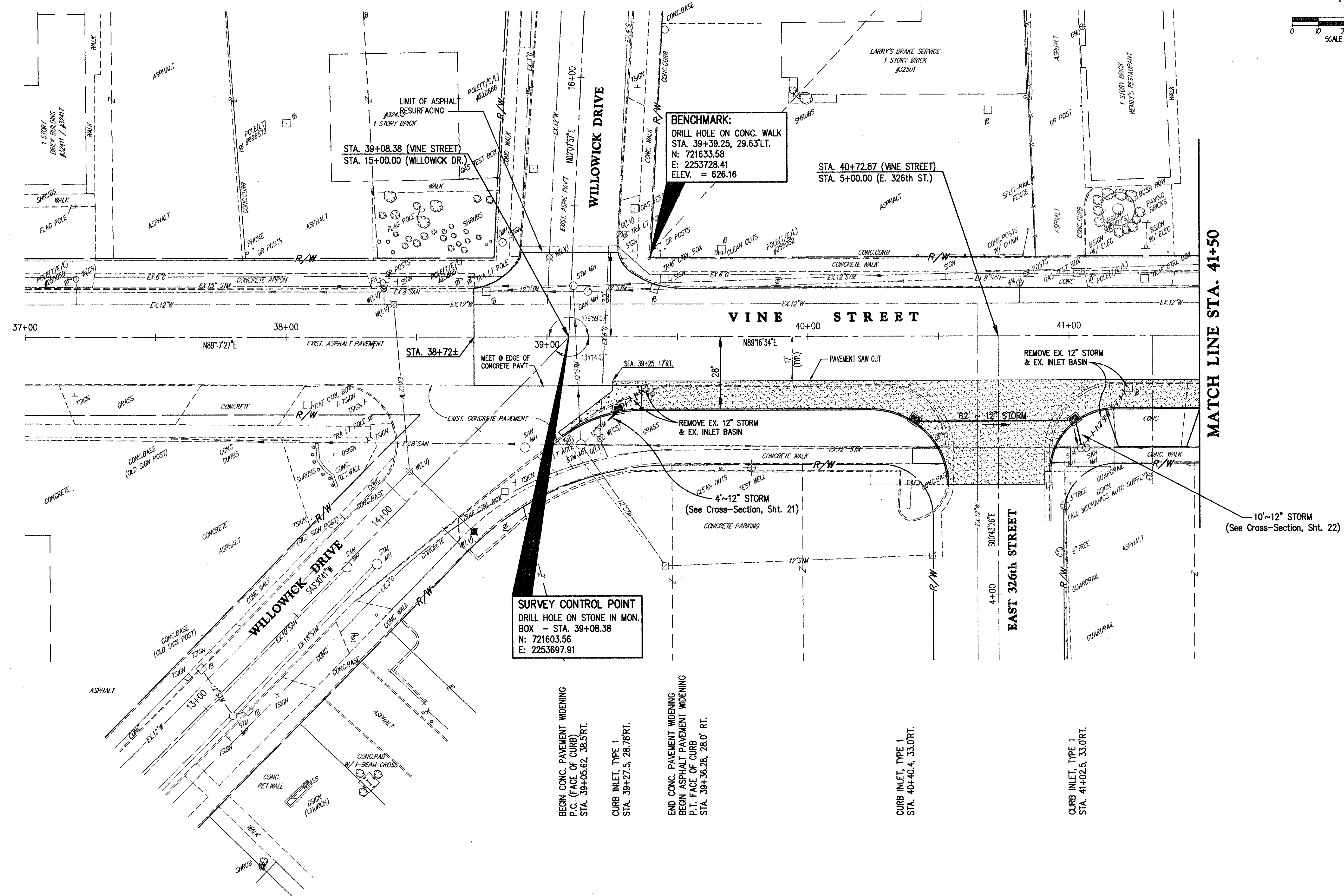
FOR DRIVEWAY REPLACEMENT SCHEDULE AND DETAILS, SEE SHEET 37

FOR DRIVEWAY PROFILES, SEE SHEETS 32 THRU 36

 DENOTES AREA OF ASPHALT PAVEMENT WIDENING  
 DENOTES AREA OF CONCRETE PAVEMENT WIDENING



SUBMISSIONS / REVISIONS



**BENCHMARK:**  
 DRILL HOLE ON CONC. WALK  
 STA. 39+39.25, 29.63'L.T.  
 N: 721633.58  
 E: 2253728.41  
 ELEV. = 626.16

**SURVEY CONTROL POINT**  
 DRILL HOLE ON STONE IN MON. BOX - STA. 39+08.38  
 N: 721603.56  
 E: 2253697.91

BEGIN CONC. PAVEMENT WIDENING  
 P.C. (FACE OF CURB)  
 STA. 39+05.62, 38.5'RT.  
 CURB INLET, TYPE 1  
 STA. 39+27.5, 28.78'RT.

END CONC. PAVEMENT WIDENING  
 BEGIN ASPHALT PAVEMENT WIDENING  
 P.T. (FACE OF CURB)  
 STA. 39+36.28, 28.0' RT.

CURB INLET, TYPE 1  
 STA. 40+40.4, 33.0'RT.

CURB INLET, TYPE 1  
 STA. 41+02.5, 33.0'RT.

**VINE STREET (S.R. 640) ROADWAY WIDENING IMPROVEMENTS**  
 CITIES OF WILLOWICK & EASTLAKE, LAKE COUNTY, OHIO  
**PLAN SHEET**  
 STA. 37+00 TO STA. 41+50

**CT Consultants, Inc.**  
 Engineers • Architects • Planners  
 Willoughby • Mentor • Columbus • North Canton • Youngstown

DATE:	OCTOBER, 1999
DRAWN BY:	J.J.C.
CHECKED BY:	G.C.H.
APPROVED BY:	
SCALE:	
HOR.:	1" = 20'
VERT.:	
CONTRACT NO.:	9840624
SHEET NO.:	9
OF	52

COPYRIGHT - DATE: 12-07-99 15:58, CT CONSULTANTS INC. R:\1999\9840624\9840624.DWG PLOT11-20