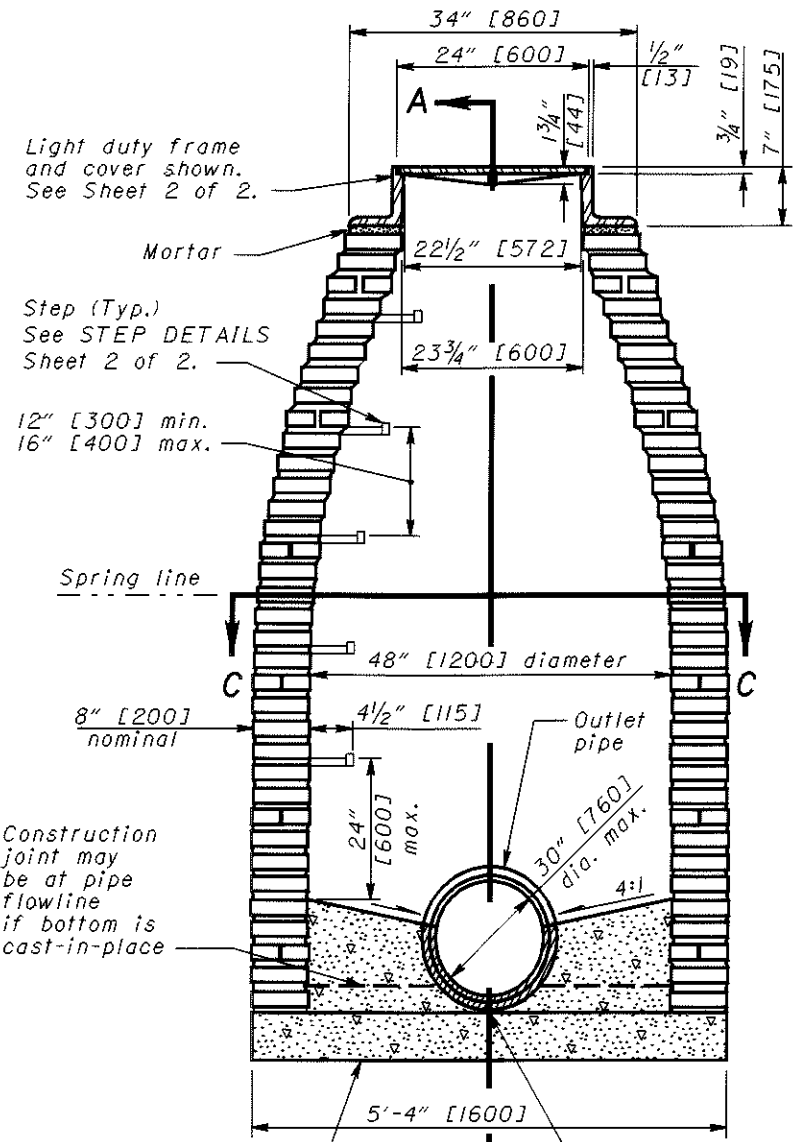
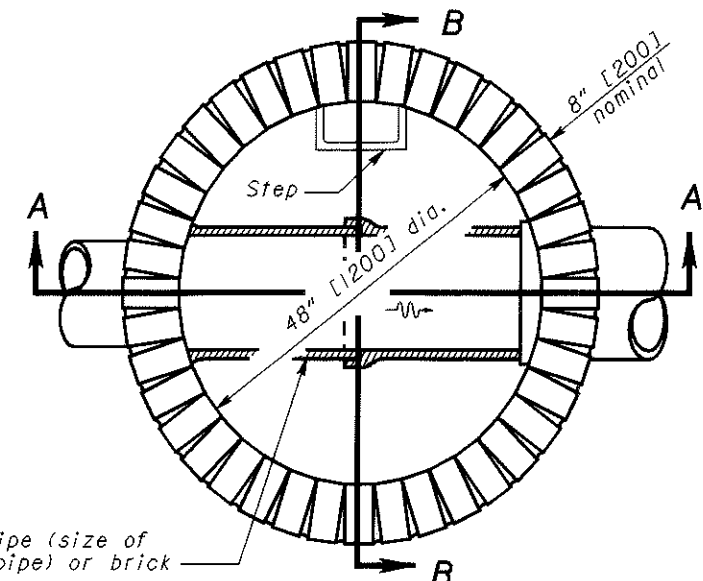


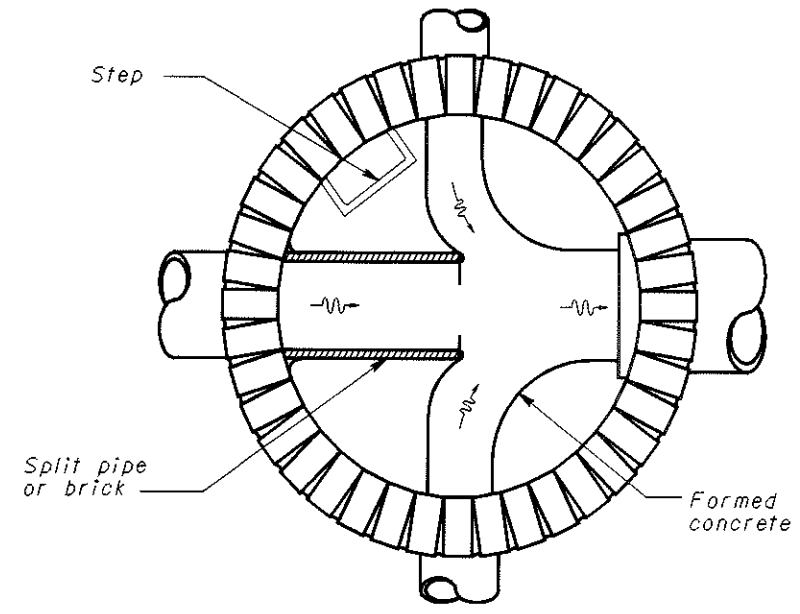
SECTION A-A



SECTION B-B



SECTION C-C



SECTION BELOW SPRING LINE SHOWING METHOD OF TURNING SIDE DRAINS

NOTES

**CONSTRUCTION:** Manhole No. 1 is for sewers 30" [760] diameter or less. The design shown is for brick construction with every sixth course a stretcher course. The 6" [150] bottom may be precast or cast-in-place concrete. The bottom channel section shall be built with concrete and lined with split pipe or brick except curved channels may be formed in the concrete.

Precast solid concrete radial blocks or cast-in-place concrete reinforced with #4 [#13M] bars on 12" [300] centers both vertically and horizontally, may be used with a wall thickness of 6" [150] or greater. Precast manholes detailed on SCD MH-1.2 or MH-1.3 may be used in lieu of the design shown unless otherwise specified in the plans.

**DROP PIPE:** When specified on the plans, the drop pipe shall be constructed as shown on SCD MH-3.1.

**SANITARY SEWER:** Covers shall be without the pick and vent holes shown here and shall include a sealing gasket affixed to the bearing surface. Bolt-down covers shall not be used unless specified in the plans.

**FRAME, COVER, AND STEPS:** See Sheet 2 of 2 for these notes.

THIS DRAWING REPLACES MH-1.1M DATED 10-21-97.

ROADWAY ENGINEERING SERVICES		OHIO DEPARTMENT OF TRANSPORTATION	
STANDARD ROADWAY CONSTRUCTION DRAWING		MANHOLE No. 1	
NUMBER	MH-1.1	STDS. ENGR.	D. Focke
		REVISIONS	
		All metric dimensions (in brackets [ ]) are in millimeters unless otherwise noted.	
		DRAWN	D. Focke
		ROADWAY DESIGN ENGINEER	
		DATE	