

CALC. BY:  
CHECKED BY:

PLAN AND PROFILE SHEET  
STA. 4+600 TO STA. 4+700 S.R. 640

LAK-640-3.444

84  
214

SEE SHEETS 124, 125 FOR CATCH BASIN CROSS-OVERS  
SEE SHEET 85 FOR ESTIMATED DRAINAGE QUANTITIES  
SEE SHEET 199 FOR UTILITY RELOCATION

\*\* PIPE TO BE INSTALLED TO MAINTAIN POSITIVE DRAINAGE FROM NORTH SIDE OF VINE ST. DURING PHASE I CONSTRUCTION. PIPE TO BE REMOVED AND 2-2B CATCH BASIN BULKHEADED DURING PHASE II CONSTRUCTION.

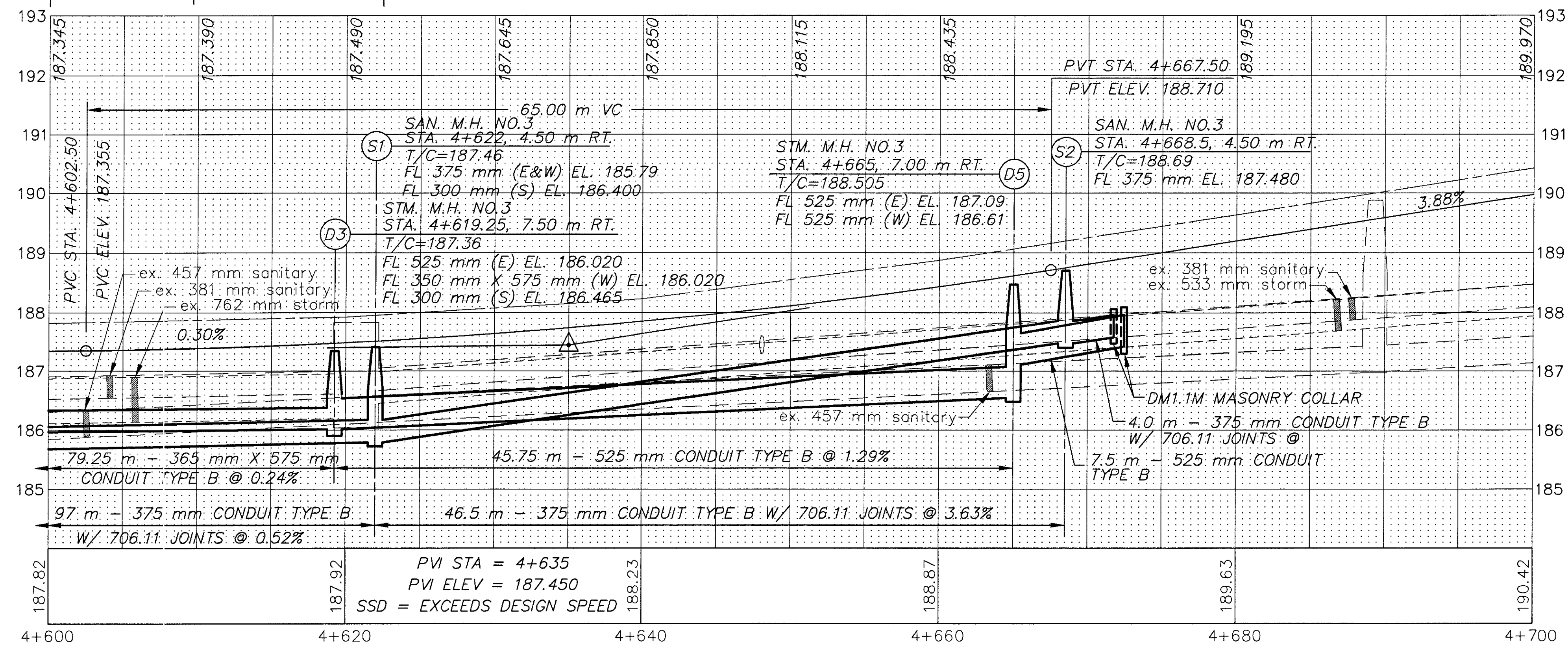
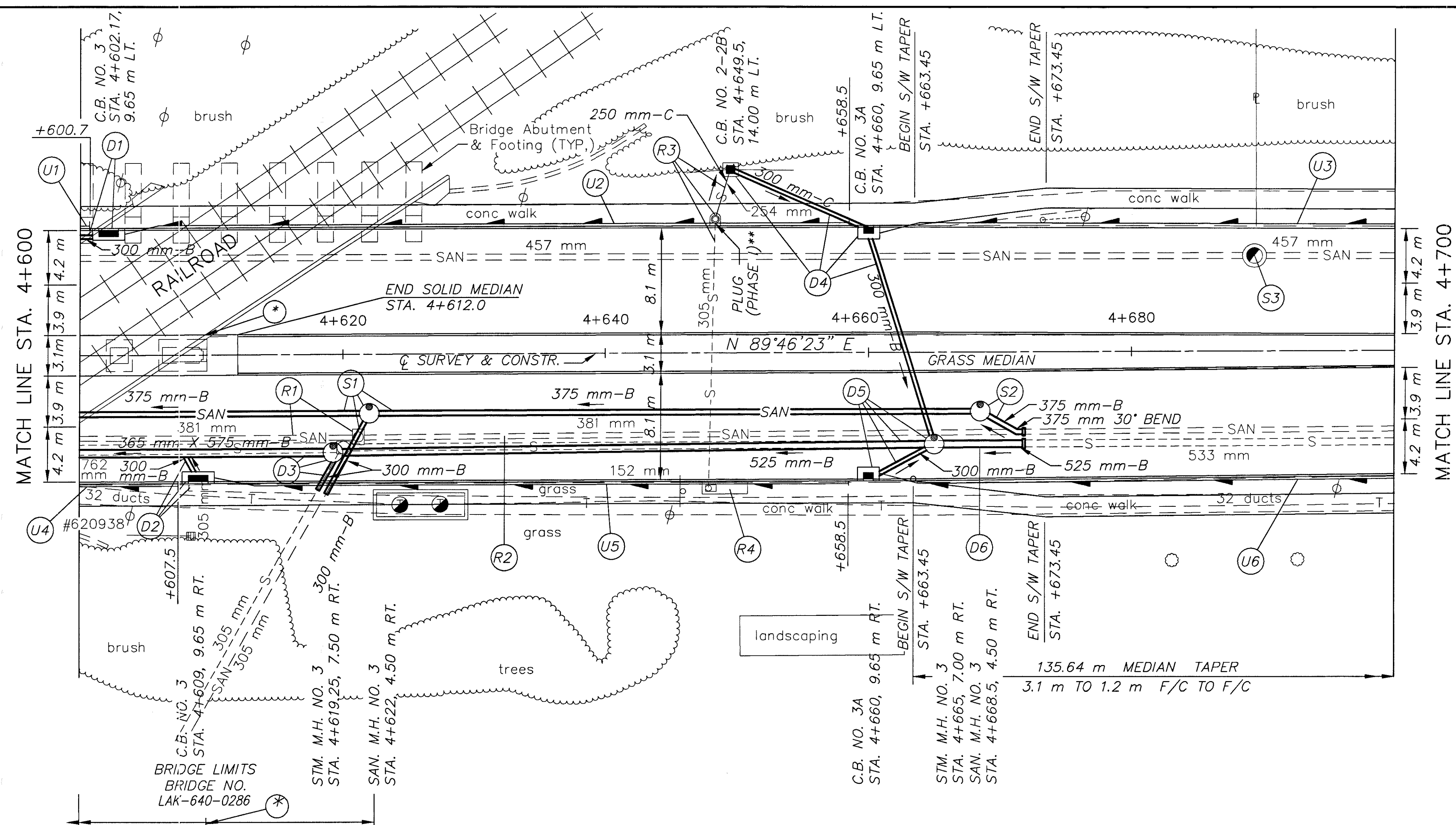
**LEGEND**

- W --- EX. WATER LINE
- SAN --- EX. SANITARY LINE
- G --- EX. GAS LINE
- S --- EX. STORM LINE
- T --- EX. TELEPHONE LINE

(\*) CRITICAL BRIDGE CLEARANCE  
STA. 4+609.67  
CLEARANCE = 5.01 m  
(SEE SHT. 193 FOR BRIDGE CLEARANCES)

BENCH MARK: ELEV. 193.870  
SOA. 4+631.2, OFFSET 35.6 m RT.  
HYDRANT  
TOP STEM

(\*) 707.41 NON-PERFORATED,  
ASTM D-3034 SDR 35,  
707.33 OR 707.42



REFERENCE NUMBER		STATION		SIDE	UNDERDRAINS		BENDS AND BRANCHES FOR INFORMATION ONLY
		FROM	TO		150 mm CONDUIT, TYPE F (*)	150 mm SHALLOW PIPE UNDERDRAIN WITH FABRIC WRAP	
		ELEV.	ELEV.		METER	METER	EACH
U1	4+600	186.06	186.06	L		0.7	
U2	4+602.2	186.07	187.10	L	3	53.3	1
U3	4+660	187.15	188.685	L	3	37	1
U4	4+600	186.06	186.09	R		7.5	
U5	4+609	186.10	187.10	R	3	46.5	1
U6	4+660	187.15	188.685	R	3	37	1
TOTALS CARRIED TO SHEET 85					12	182	4