

SEE SHEETS 123, 182 FOR CATCH BASIN CROSS-OVERS  
 SEE SHEET 85 FOR ESTIMATED DRAINAGE QUANTITIES  
 SEE SHEET 199 FOR UTILITY RELOCATION  
 SEE SHEET 183A FOR DRAINAGE DETAILS

\*\* PIPE TO BE INSTALLED TO MAINTAIN POSITIVE DRAINAGE FROM THE NORTH SIDE OF VINE ST. DURING PHASE I CONSTRUCTION. PIPE SHALL BE ABANDONED BY PLUGGING DURING PHASE II CONSTRUCTION.

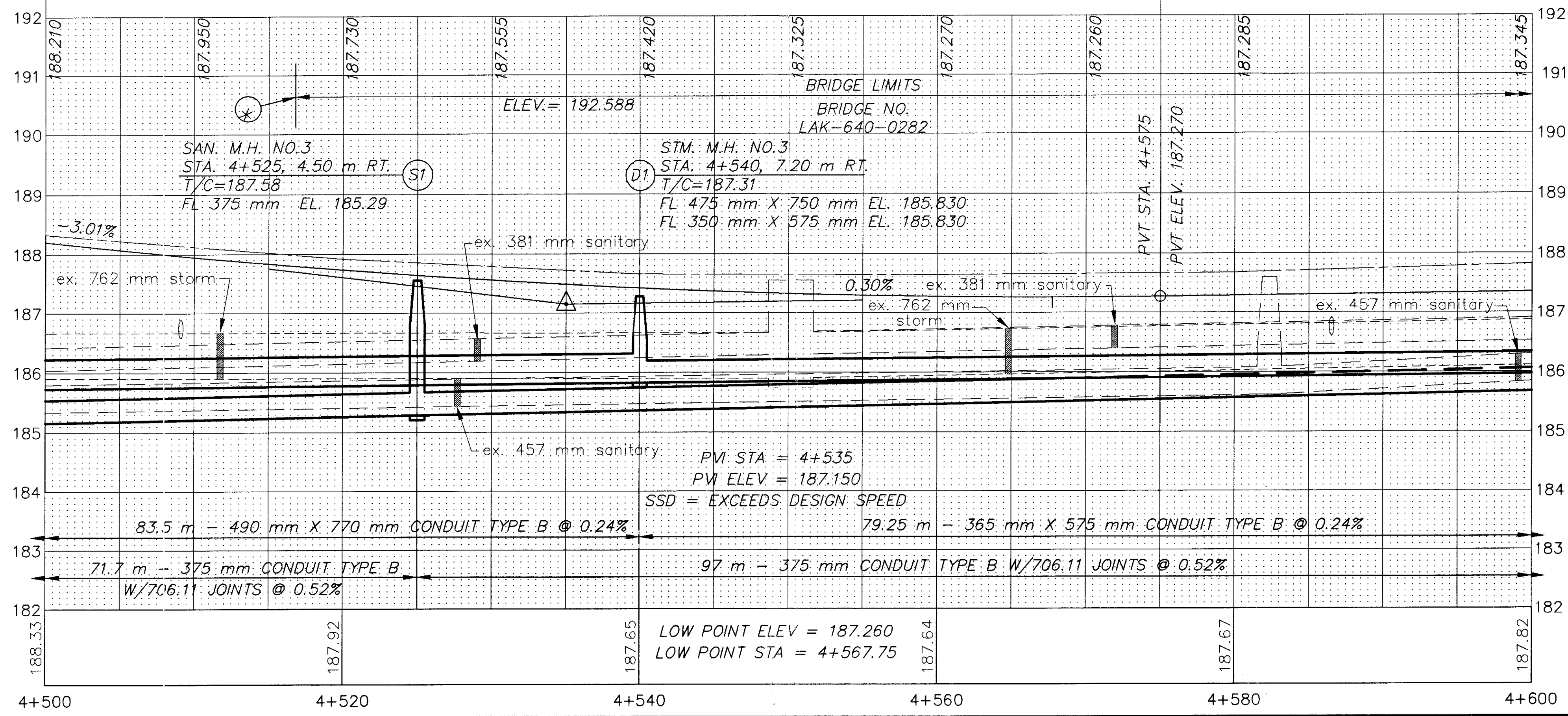
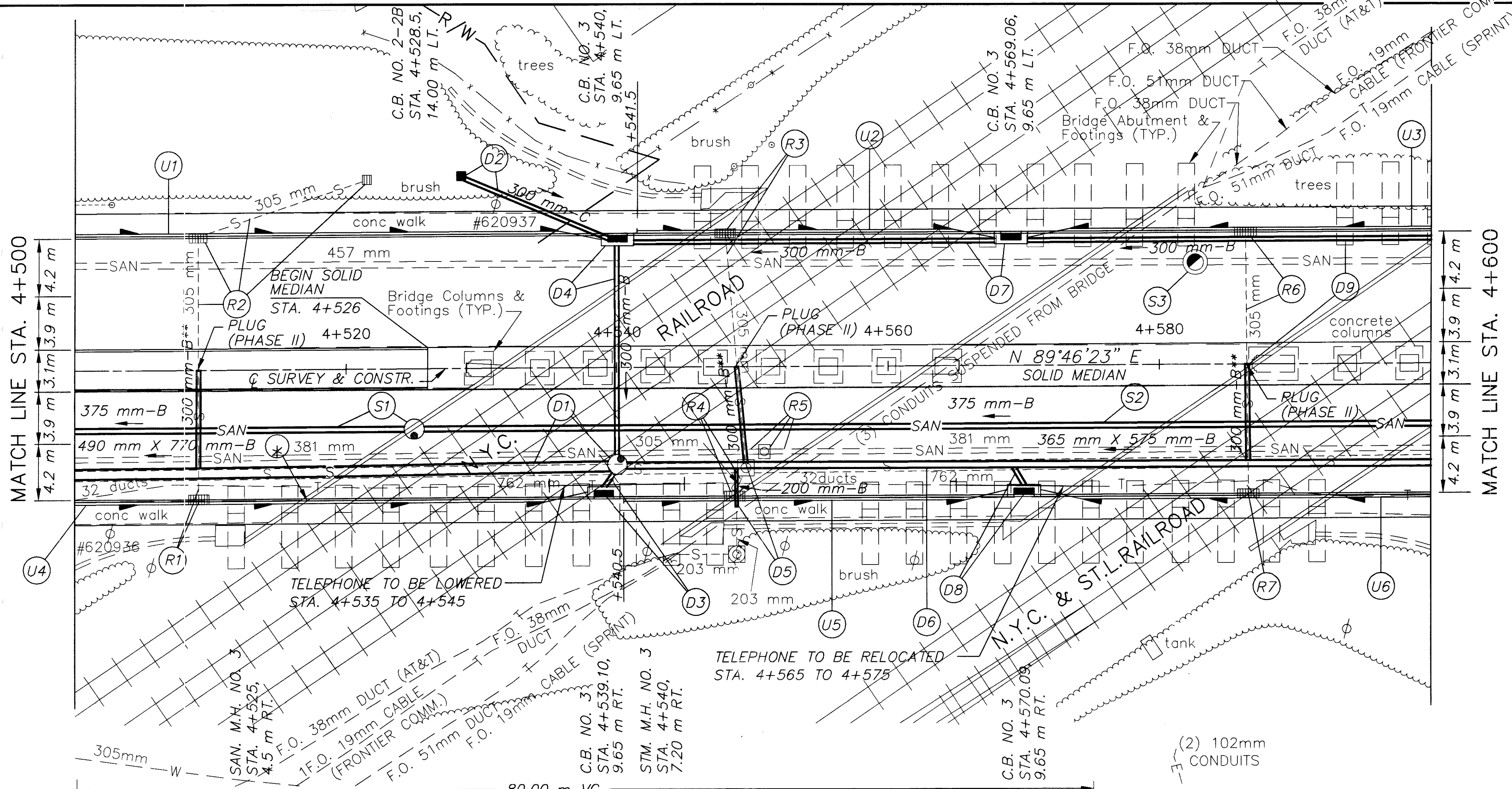
**LEGEND**

- W --- EX. WATER LINE
- SAN --- EX. SANITARY LINE
- G --- EX. GAS LINE
- S --- EX. STORM LINE
- T --- EX. TELEPHONE LINE

(\*) CRITICAL BRIDGE CLEARANCE  
 STA. 4+516.81  
 CLEARANCE = 4.95 m  
 (SEE SHT. 193 FOR BRIDGE CLEARANCES)

BENCH MARK: ELEV. 192.710  
 STA. 4+510.5, OFFSET 12.5 m RT.  
 TOP RETAINING WALL  
 PAINT MARK

(\*) 707.41 NON-PERFORATED,  
 ASTM D-3034 SDR 35,  
 707.33 OR 707.42



UNDERDRAINS						
REFERENCE NUMBER	STATION		SIDE	603	605	BENDS AND BRANCHES FOR INFORMATION ONLY 150 mm X 45'
	FROM	TO		150 mm CONDUIT, TYPE F (*)	150 mm SHALLOW PIPE UNDERDRAIN WITH FABRIC WRAP	
	E. ELEV.	E. ELEV.		METER	METER	
U1	4+500	4+540	L	3	37	1
U2	4+541.5	4+569	L	3	24.4	1
U3	4+569	4+600	L	3	28.0	1
U4	4+500	4+539	R	3	36.0	1
U5	4+540.5	4+570.1	R	3	26.6	1
U6	4+570.1	4+600	R	3	26.9	1
TOTALS CARRIED TO SHEET 85				18	178.9	6

CALC. BY:  
 CHECKED BY:

PLAN AND PROFILE SHEET  
 STA. 4+500 TO STA. 4+600 S.R. 640

LAK-640-3.444