

CALC. BY: _____
CHECKED BY: _____

PLAN AND PROFILE SHEET
STA. 4+400 TO STA. 4+500 S.R. 640

LAK-640-3.444

81
214

SEE SHEETS 122 FOR CATCH BASIN CROSS-OVERS
SEE SHEET 101-104 FOR 900 mm STORM AND 1050 mm STORM
SEE SHEET 60 FOR STORM CONNECTION QUANTITIES
SEE SHEET 82 FOR ESTIMATED DRAINAGE QUANTITIES
SEE SHEET 198 FOR UTILITY RELOCATION

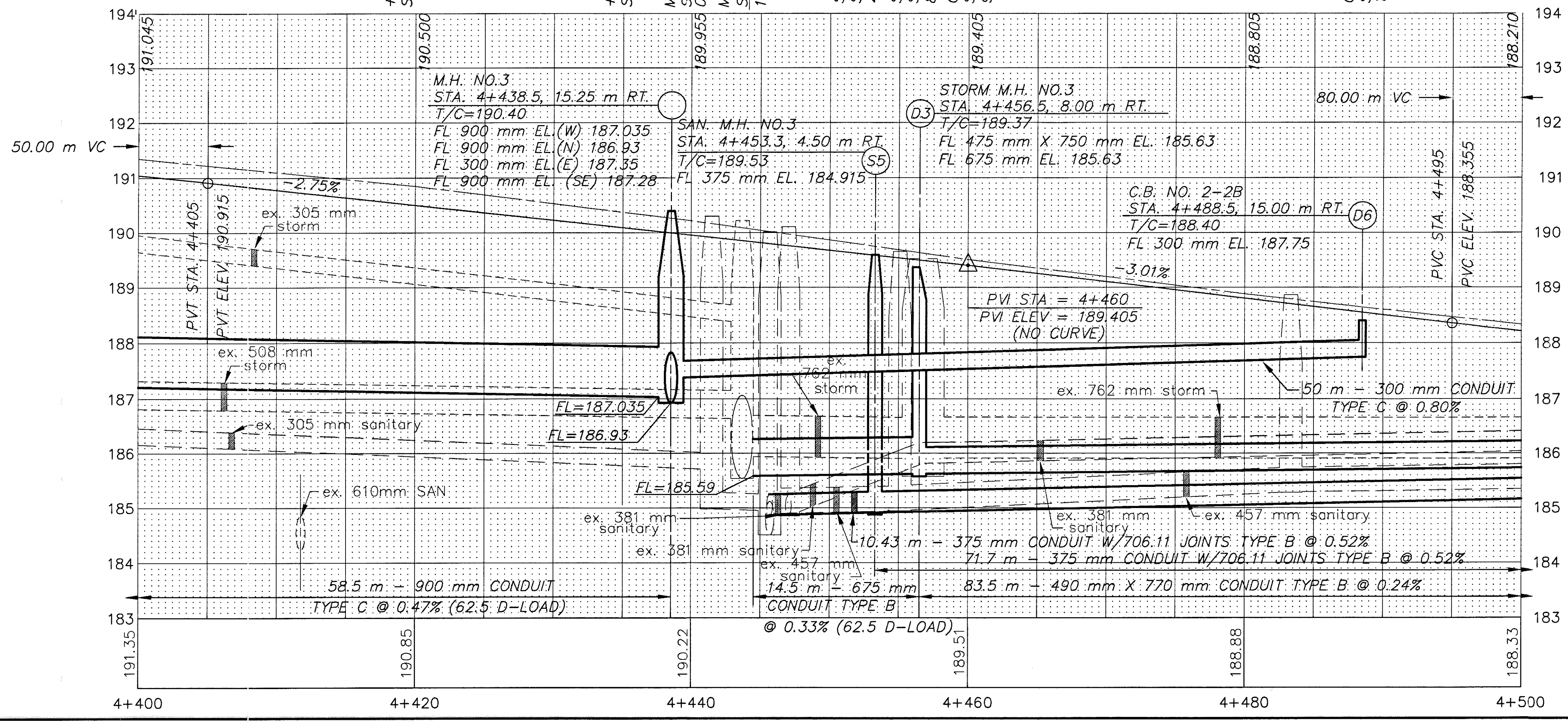
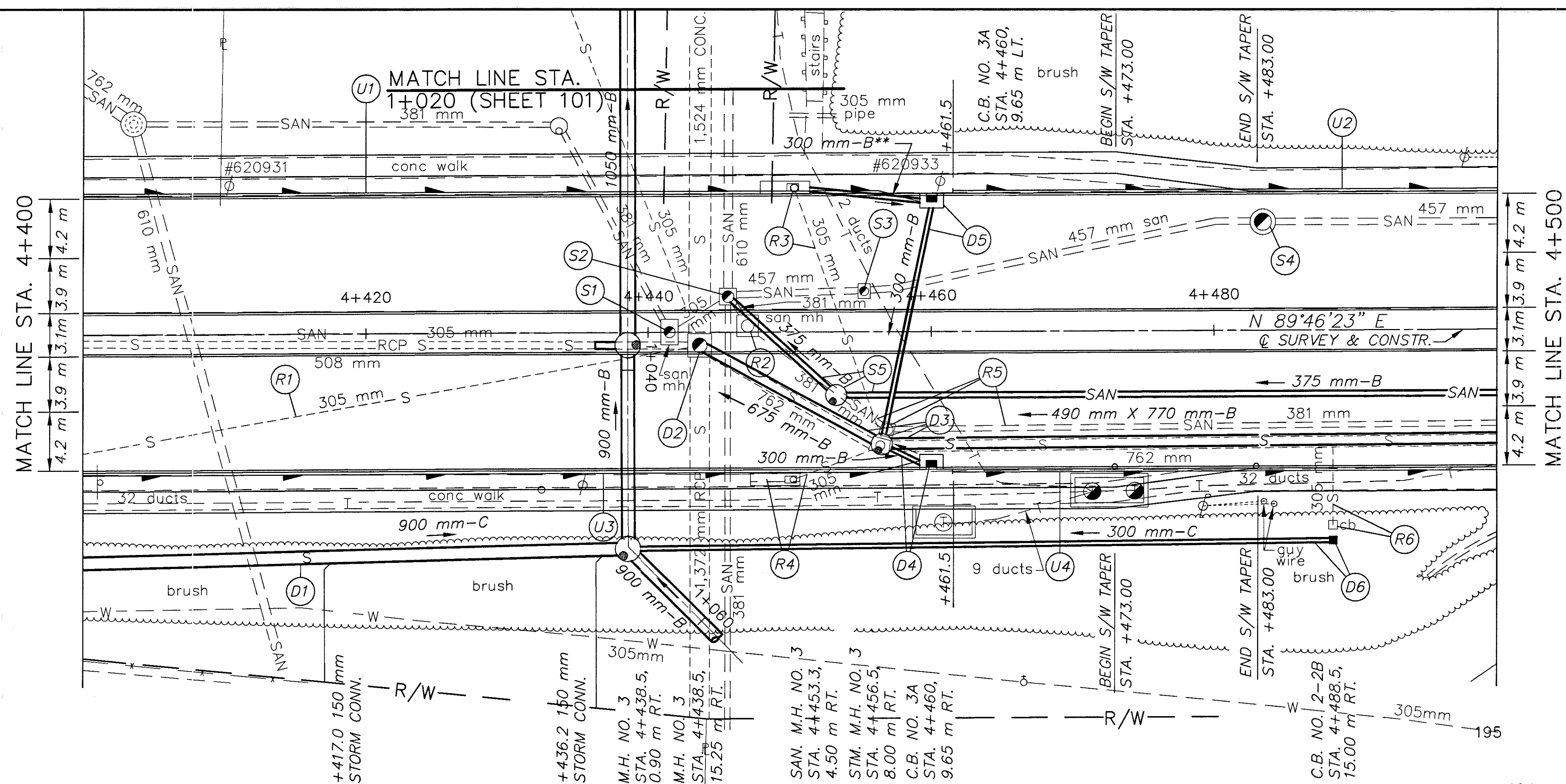
LEGEND

- W — EX. WATER LINE
- SAN — EX. SANITARY LINE
- G — EX. GAS LINE
- S — EX. STORM LINE
- T — EX. TELEPHONE LINE

BENCH MARK: ELEV. 192.710
STA. 4+510.5, OFFSET 12.5 m RT.
TOP RETAINING WALL
PAINT MARK

** PIPE TO BE INSTALLED TO MAINTAIN POSITIVE DRAINAGE FROM NORTH SIDE OF VINE ST. DURING PHASE I CONSTRUCTION. THIS PIPE SHALL BE REMOVED AND THE CATCH BASIN BULKHEADED DURING PHASE II CONSTRUCTION.

(*) 707.41 NON-PERFORATED,
ASTM D-3034 SDR 35,
707.33 OR 707.42



UNDERDRAINS						
REFERENCE NUMBER	STATION		SIDE	CONDUIT		BENDS AND BRANCHES FOR INFORMATION ONLY 150 mm x 45° EACH
	FROM	TO		150 mm CONDUIT, TYPE F (*)	150 mm SHALLOW PIPE UNDERDRAIN WITH FABRIC WRAP	
	ELEV.	ELEV.		METER	METER	
U1	4+400	4+460	L	3	57	1
	189.760	188.120				
U2	4+461.5	4+500	L		38.5	
	188.075	186.925				
U3	4+400	4+460	R	3	57.0	1
	189.76	188.120				
U4	4+461.5	4+500	R		38.5	
	188.075	186.925				
TOTALS CARRIED TO SHEET 82				6	191	2