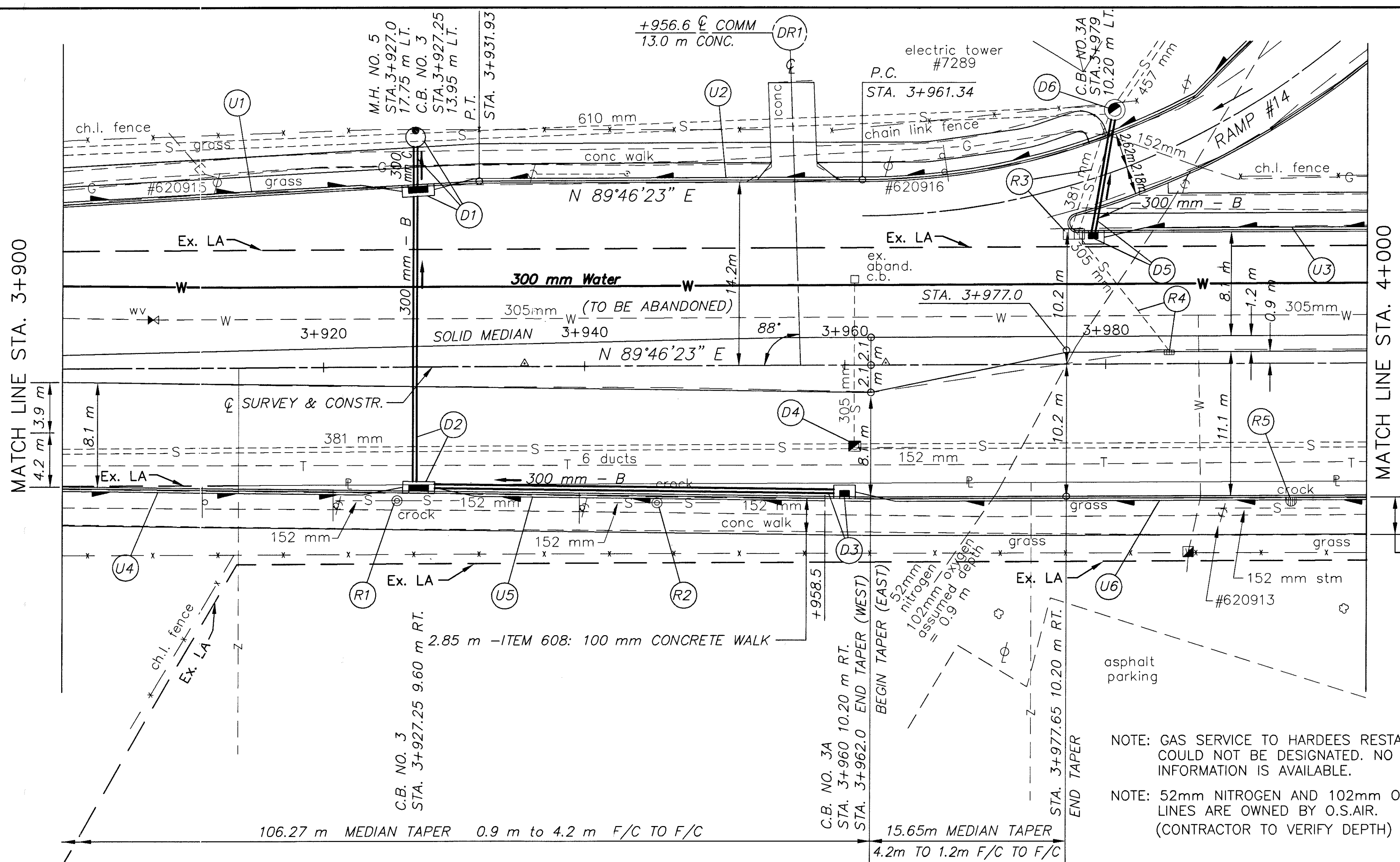


SEE SHEETS 157 FOR S.R.2 RAMP #14 EXTRA AREA
 SEE SHEETS 112,181 FOR CATCH BASIN CROSS-OVERS
 SEE SHEET 196 FOR WATER WORK QUANTITIES
 SEE SHEET 61 FOR DRIVE QUANTITIES
 SEE SHEET 76 FOR ESTIMATED DRAINAGE QUANTITIES
 SEE SHEET 196 FOR UTILITY RELOCATION



MATCH LINE STA. 3+900

MATCH LINE STA. 4+000

- LEGEND**
- W --- EX. WATER LINE
 - SAN --- EX. SANITARY LINE
 - G --- EX. GAS LINE
 - S --- EX. STORM LINE
 - T --- EX. TELEPHONE LINE

BENCH MARK: ELEV. 192.195
 STA. 3+856.71, OFFSET 10.38 m LT.
 S.E. BASE BOLT
 ROUTE 2 WEST SIGN

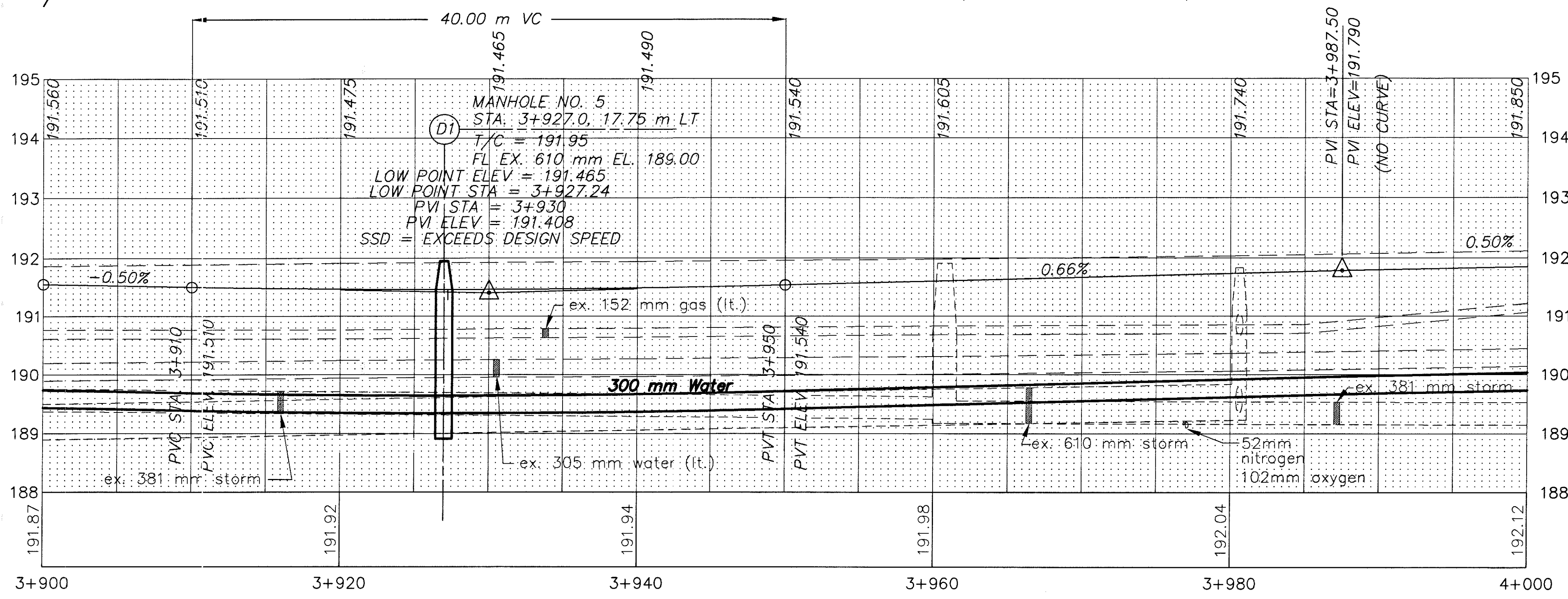
ITEM 608: 100 mm CONCRETE WALK

(*) 707.41 NON-PERFORATED,
 ASTM D-3034 SDR 35,
 707.33 OR 707.42

NOTE: GAS SERVICE TO HARDEES RESTAURANT
 COULD NOT BE DESIGNATED. NO RECORD
 INFORMATION IS AVAILABLE.
 NOTE: 52mm NITROGEN AND 102mm OXYGEN
 LINES ARE OWNED BY O.S.AIR.
 (CONTRACTOR TO VERIFY DEPTH)

UNDERDRAINS

REFERENCE NUMBER	STATION		SIDE	CONDUIT		BENDS AND BRANCHES FOR INFORMATION ONLY 150 mm x 45°
	FROM	TO		150 mm CONDUIT, TYPE F (*)	150 mm SHALLOW PIPE UNDERDRAIN WITH FABRIC WRAP	
	E ELEV.	E ELEV.		METER	METER	
U1	3+900	3+927.25	L	3	24.25	1
	190.205	190.06				
U2	3+927.25	3+996.8	L	3	71.5	1
	190.06	190.555				
U3	3+979	4+000	L	3	18	1
	190.445	190.52				
U4	3+900	3+927.25	R	3	24.25	1
	190.275	190.18				
U5	3+927.25	3+958.5	R	3	28.25	1
	190.18	190.31				
U6	3+960	4+000	R	3	37	1
	190.32	190.52				
TOTALS CARRIED TO SHEET 76				18	203.25	6



PLAN AND PROFILE SHEET
 STA. 3+900 TO STA. 4+000 S.R. 640
 LAK-640-3.444
 74
 214