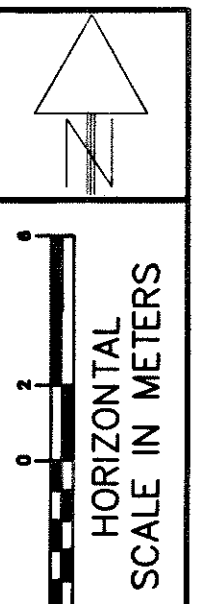


LEGEND

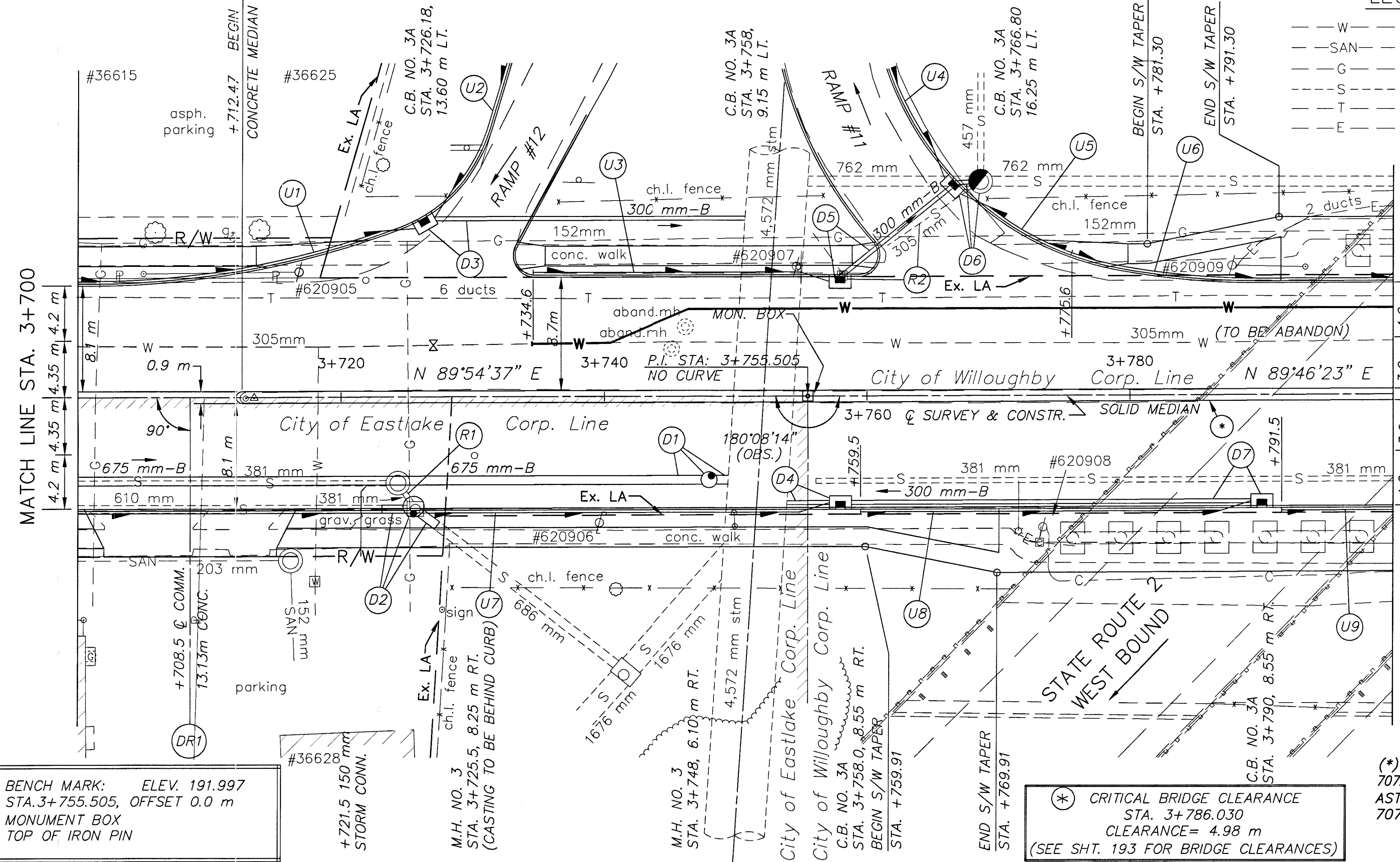
- W — EX. WATER LINE
- SAN — EX. SANITARY LINE
- G — EX. GAS LINE
- S — EX. STORM LINE
- T — EX. TELEPHONE LINE
- E — EX. ELECTRIC LINE

SEE SHEET 150, 153 FOR S.R.2, RAMP #11 AND RAMP #12 EXTRA AREAS
 SEE SHEETS 180A FOR CATCH BASIN CROSS-OVERS
 SEE SHEET 195 FOR WATER WORK QUANTITIES
 SEE SHEET 60 FOR STORM CONNECTION QUANTITIES
 SEE SHEET 61 FOR DRIVE QUANTITIES
 SEE SHEET 72 FOR ESTIMATED DRAINAGE QUANTITIES
 SEE SHEET 195 FOR UTILITY RELOCATION



MATCH LINE STA. 3+700

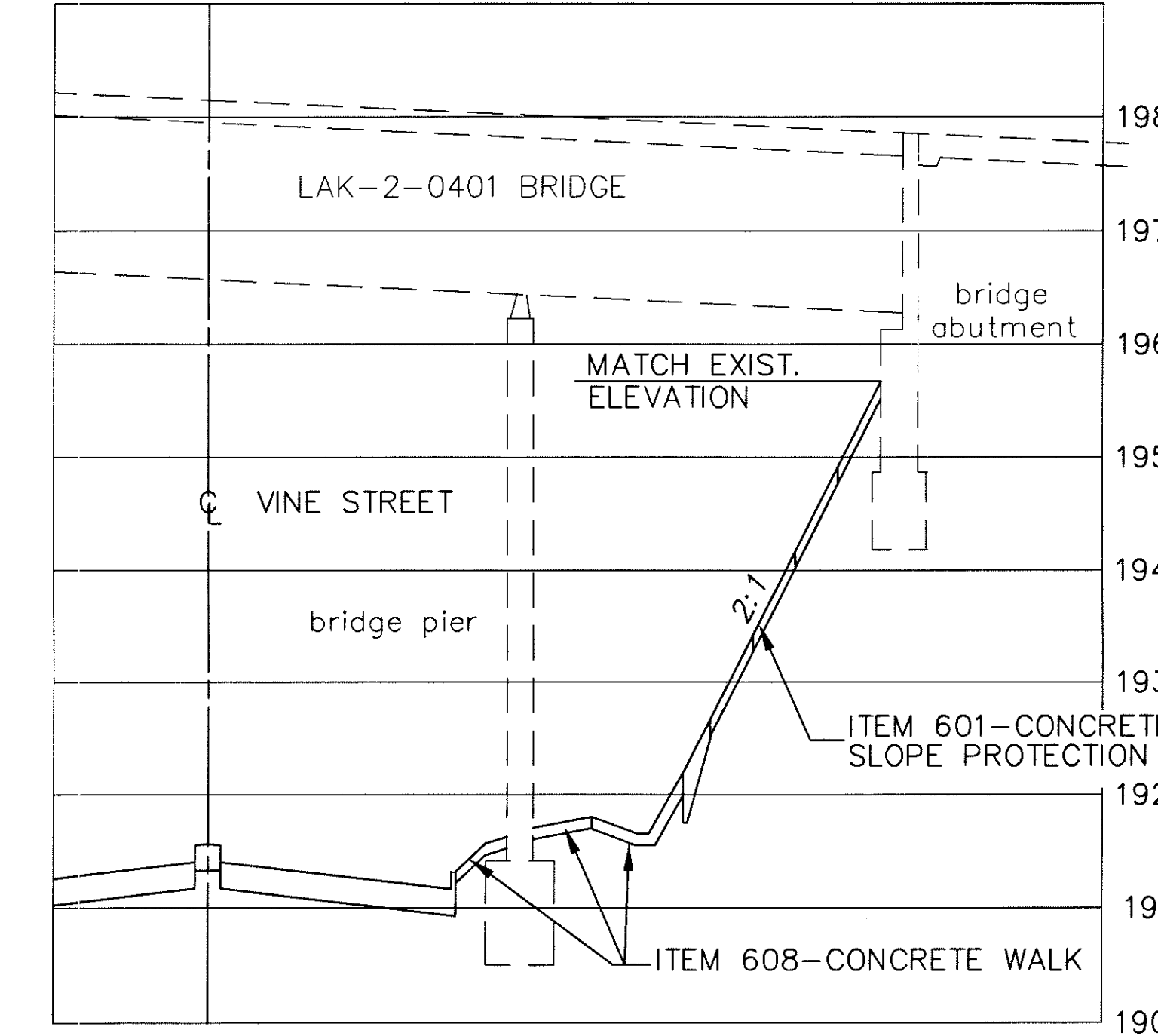
MATCH LINE STA. 3+800



BENCH MARK: ELEV. 191.997
 STA. 3+755.505, OFFSET 0.0 m
 MONUMENT BOX
 TOP OF IRON PIN

(*) CRITICAL BRIDGE CLEARANCE
 STA. 3+786.030
 CLEARANCE = 4.98 m
 (SEE SHT. 193 FOR BRIDGE CLEARANCES)

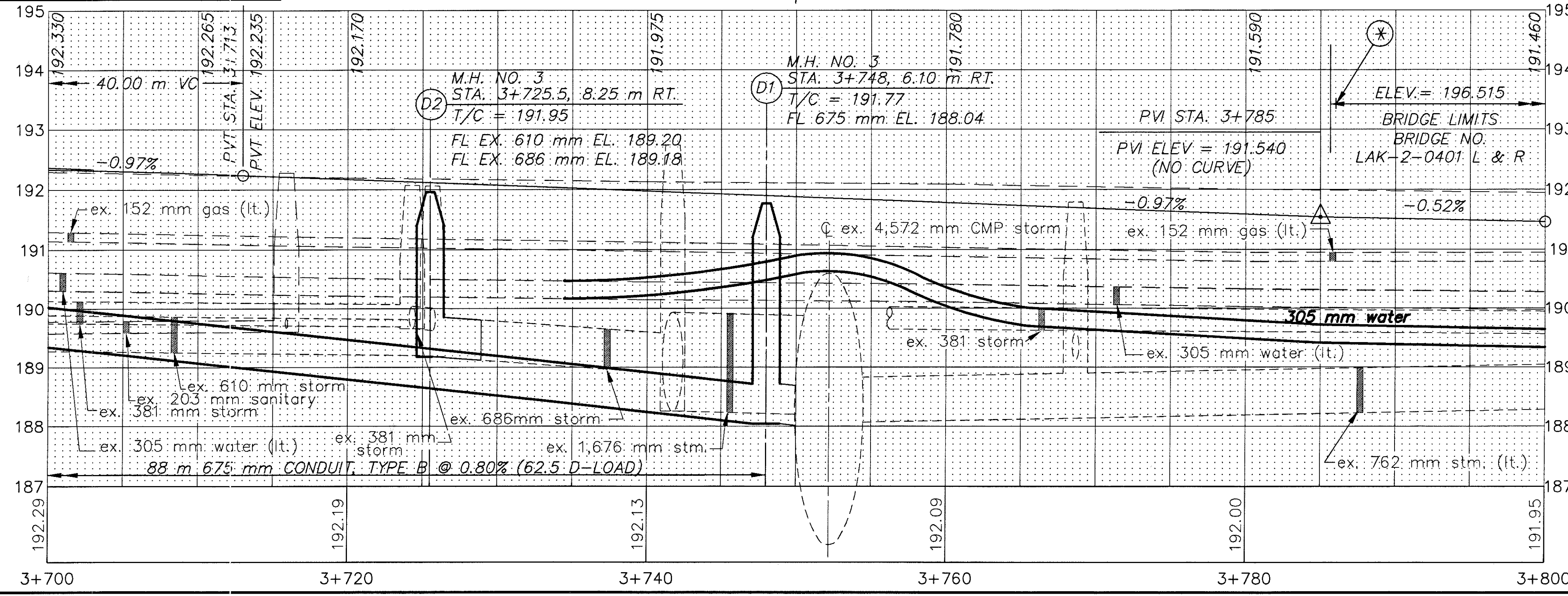
(*) 707.41 NON-PERFORMED,
 ASTM D-3034 SDR 35,
 707.33 OR 707.42



TYPICAL SECTION - ITEM 601 CONCRETE SLOPE PROTECTION
 *FOR ITEM 601-CONCRETE SLOPE PROTECTION QUANTITIES, SEE SHEET 56

UNDERDRAINS

REFERENCE NUMBER	STATION		SIDE	603		605		BENDS AND BRANCHES FOR INFORMATION ONLY
	FROM	TO		150 mm CONDUIT, TYPE F (*)	150 mm SHALLOW PIPE UNDERDRAIN WITH FABRIC WRAP	150 mm x 45'		
	ELEV.	ELEV.					METER	
U1	3+700 191.035	3+726.2 190.70	L	3	23.1	1		
U2	3+726.2 190.70	3+732.5 190.74	L	3	10	1		
U3	3+734.6 190.73	3+758 190.50	L	3	20.4	1		
U4	3+761.0 190.575	3+766.8 190.225	L	3	19.5	1		
U5	3+766.8 190.225	3+775.6 190.30	L	3	7.4	1		
U6	3+775.6 190.30	3+800 190.175	L		24.7			
U7	3+700 191.035	3+758.0 190.494	R	3	55.0	1		
U8	3+759.5 190.480	3+790 190.225	R	3	27.5	1		
U9	3+791.5 190.22	3+800 190.175	R		8.5			
TOTALS CARRIED TO SHEET 72					21	196.1	7	



CALC. BY:
 CHECKED BY:

PLAN AND PROFILE SHEET

STA. 3+700 TO STA. 3+800

S.R. 640

LAK-640-3.444

71
214