

SEE SHEET 161 FOR E. 365th ST. EXTRA AREA  
 SEE SHEETS 108, 180A FOR CATCH BASIN CROSS-OVERS  
 SEE SHEET 194 FOR WATER WORK QUANTITIES  
 SEE SHEET 60 FOR STORM CONNECTION QUANTITIES  
 SEE SHEET 61 FOR DRIVE QUANTITIES  
 SEE SHEET 72 FOR ESTIMATED DRAINAGE QUANTITIES  
 SEE SHEET 194 FOR UTILITY RELOCATIONS

**LEGEND**

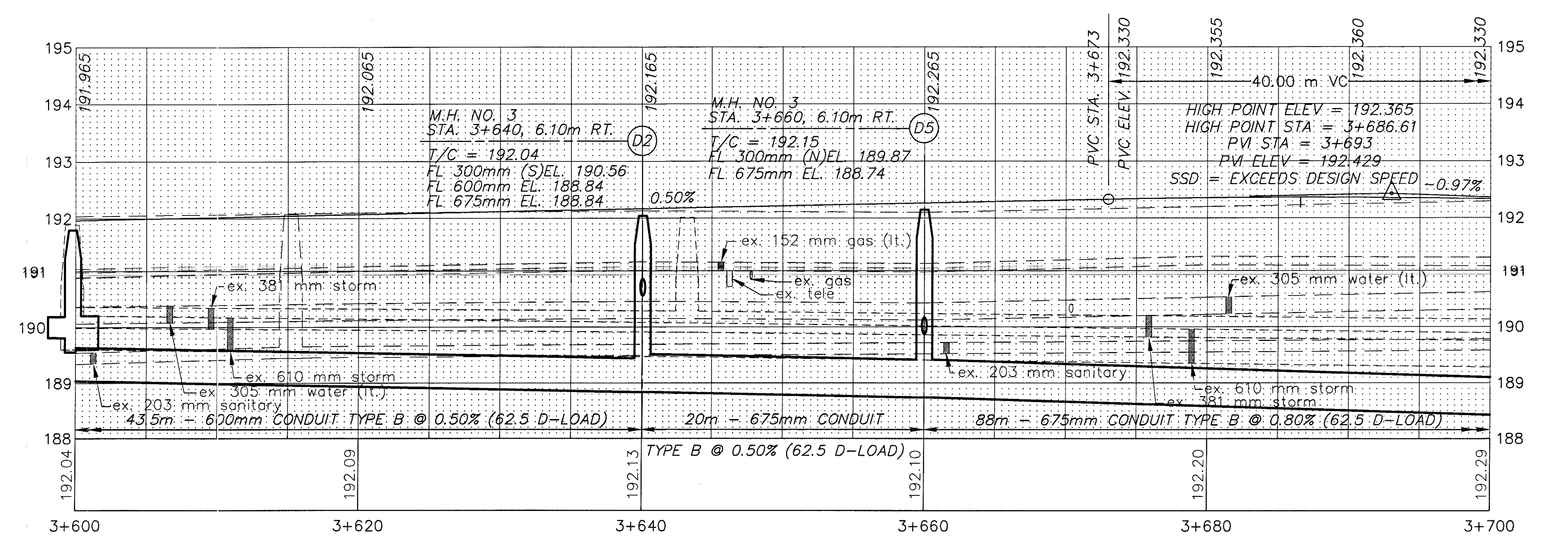
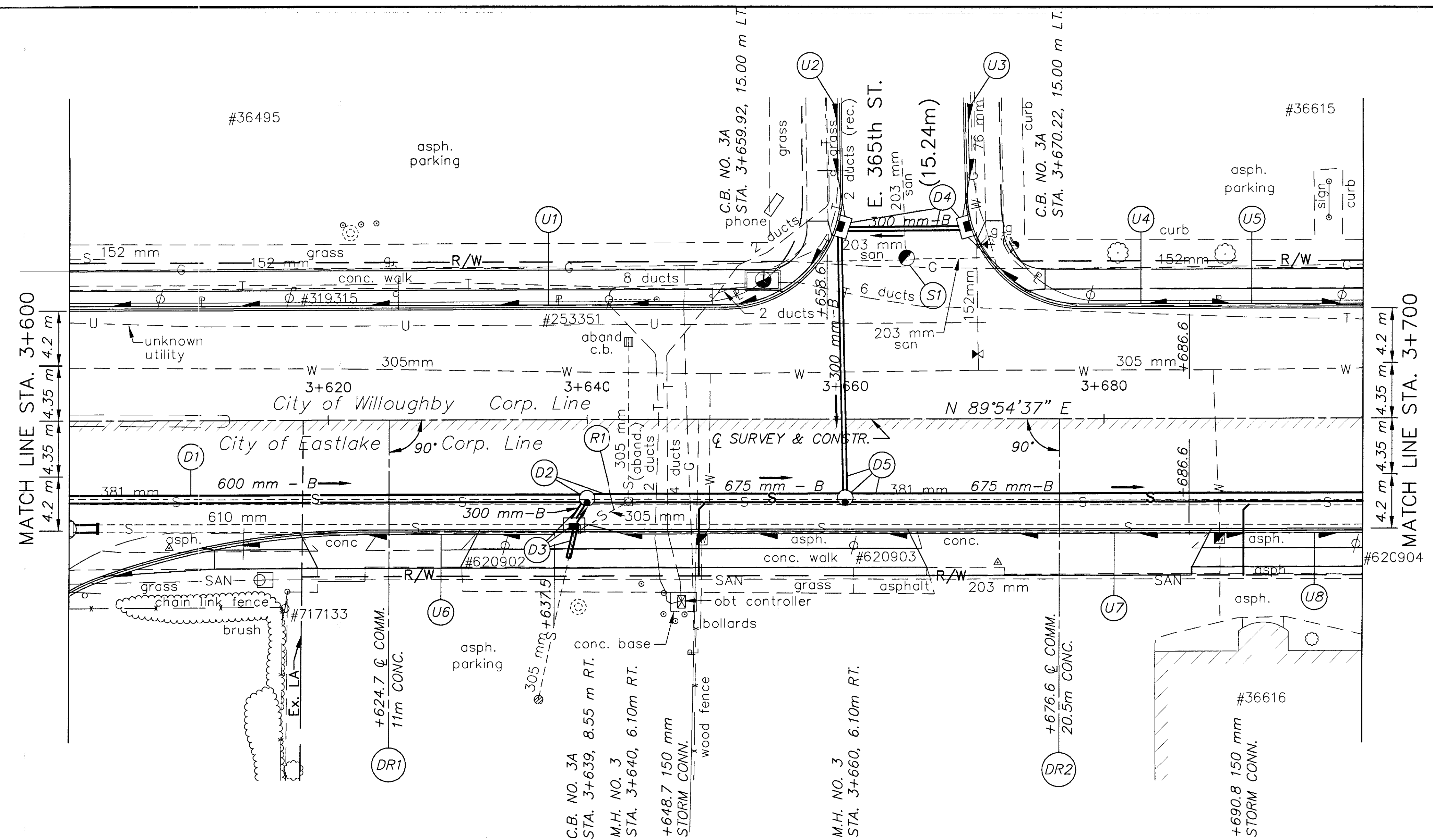
- W --- EX. WATER LINE
- SAN --- EX. SANITARY LINE
- G --- EX. GAS LINE
- S --- EX. STORM LINE
- T --- EX. TELEPHONE LINE
- U --- EX. UNKNOWN UTILITY LINE

BENCH MARK: ELEV. 193.101  
 STA. 3+676.56, OFFSET 13.43 m LT.  
 HYDRANT #352  
 TOP STEM

(\*) 707.41 NON-PERFORATED,  
 ASTM D-3034 SDR 35,  
 707.33 OR 707.42

**UNDERDRAINS**

REFERENCE NUMBER	STATION		SIDE	603		605		BENDS AND BRANCHES FOR INFORMATION ONLY	
	FROM	TO		150 mm CONDUIT, TYPE F (*)	150 mm SHALLOW PIPE UNDERDRAIN WITH FABRIC WRAP	150 mm x 45'			
	ELEV.	ELEV.				METER	METER		EACH
U1	3+600	3+658.6	L	190.720	190.825		61		
U2	3+659.5	3+659.5	L	190.885	190.800		3	6.5	
U3	3+669.5	3+669.5	L	190.885	190.800		3	6.5	
U4	3+669.5	3+686.6	L	190.800	191.070		3	16.0	
U5	3+686.6	3+700	L	191.070	191.035			13.4	
U6	3+600	3+637.5	R	190.585	190.855			37.9	
U7	3+639	3+686.6	R	190.865	191.070		3	44.6	
U8	3+686.6	3+700	R	191.070	191.035			13.4	
TOTALS CARRIED TO SHEET 72							12	199.3	4



PLAN AND PROFILE SHEET  
 STA. 3+600 TO STA. 3+700 S.R. 640

LAK-640-3.444