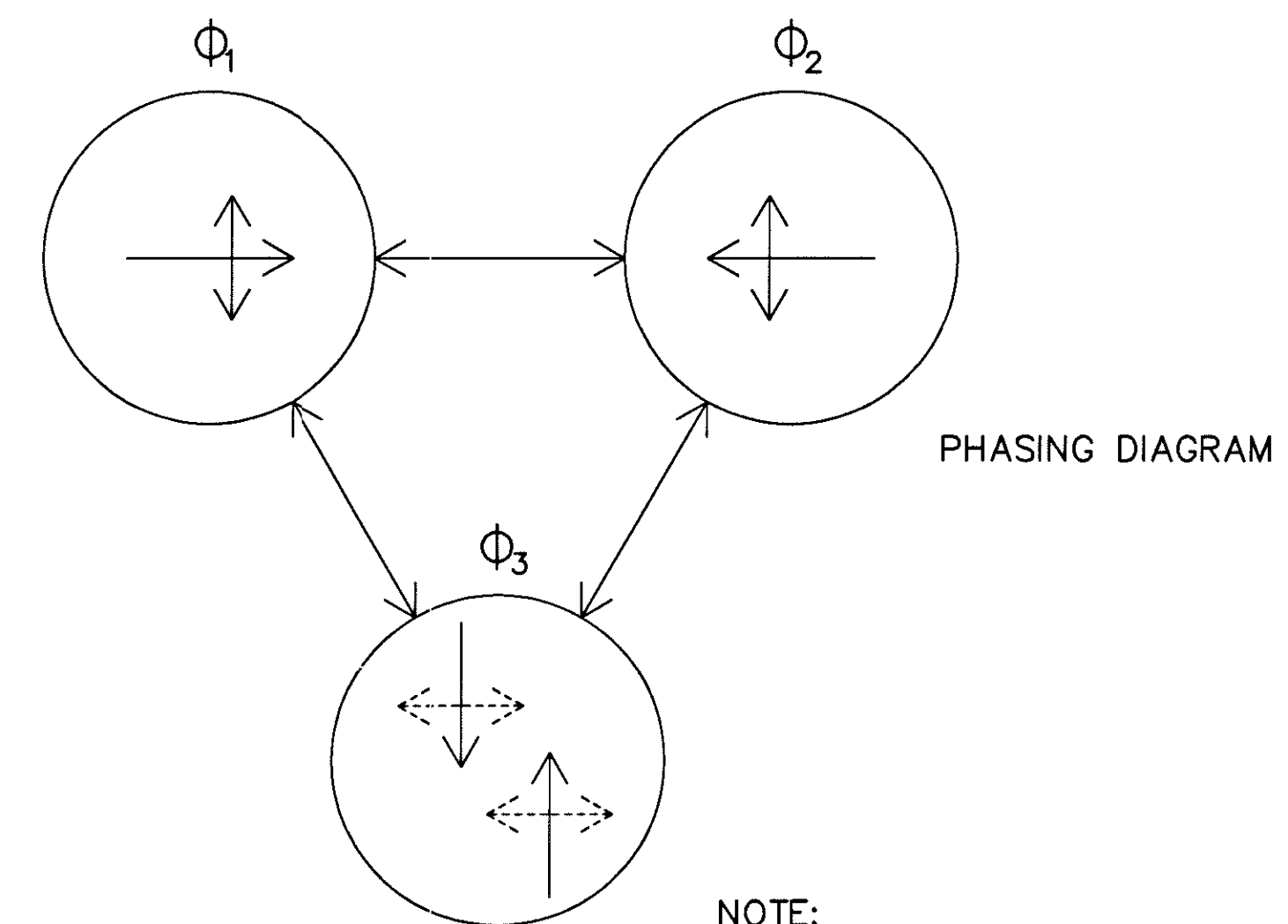


PHASING DIAGRAM

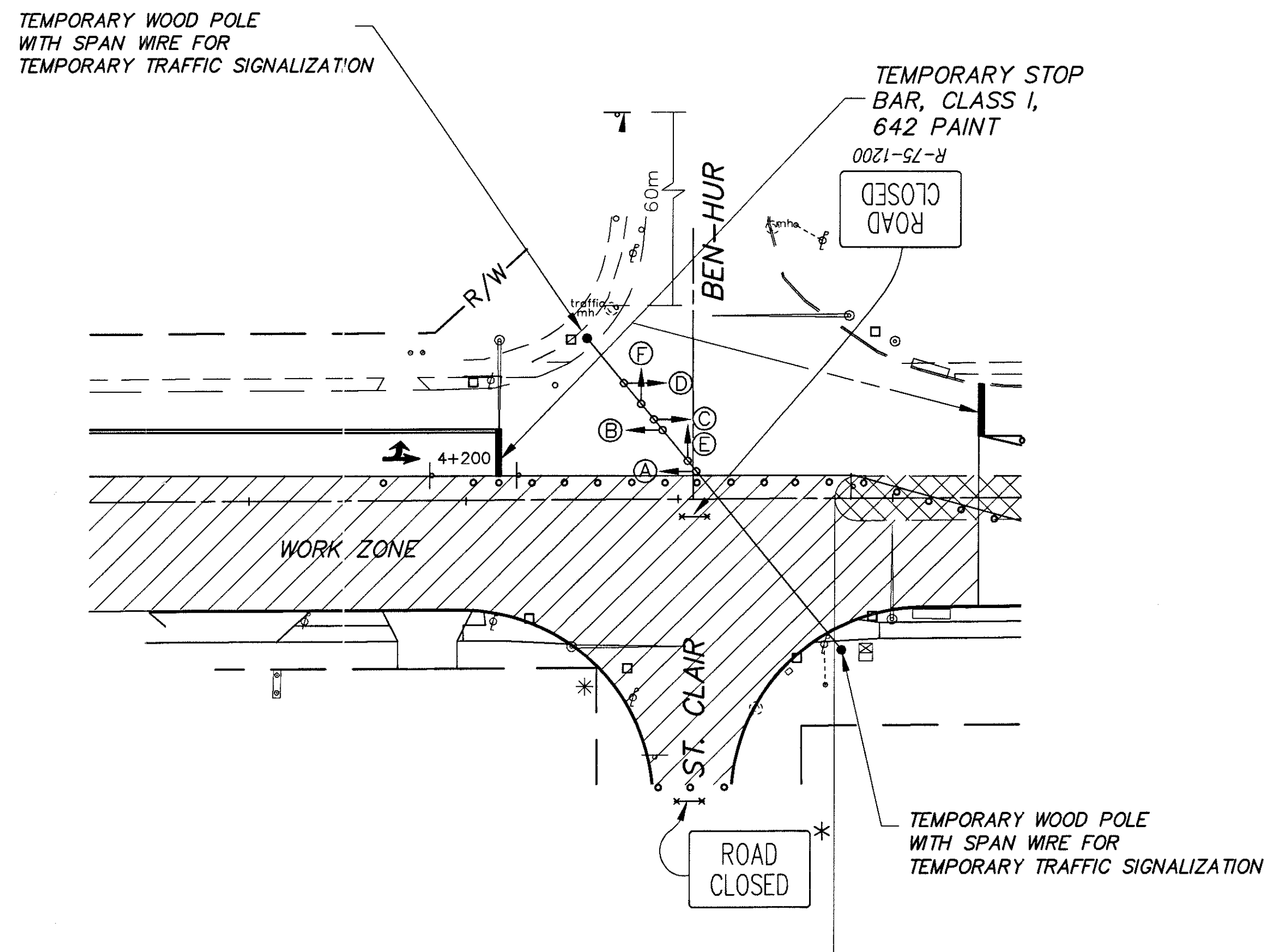
SUMMARY OF TEMPORARY SIGNAL QUANTITIES			
ITEM	TOTAL	UNIT	DESCRIPTION
625	2.5	METER	CONDUIT, 51mm, 713.04
625	2.5	METER	TRENCH
632	4	EA.	VEHICULAR SIGNAL HEADS, 3 SECTIONS, 300mm LENS, 1 WAY
632	4	EA.	VEHICULAR SIGNAL HEADS, 4 SECTIONS, 300mm LENS, 1 WAY
632	165.5	METER	SIGNAL CABLE, 5 CONDUCTORS, NO. 14 AWG.
632	2	EA.	WOOD POLE

ALL QUANTITIES TO BE INCLUDED IN LUMP SUM BID FOR ITEM 614, MAINTAINING TRAFFIC.

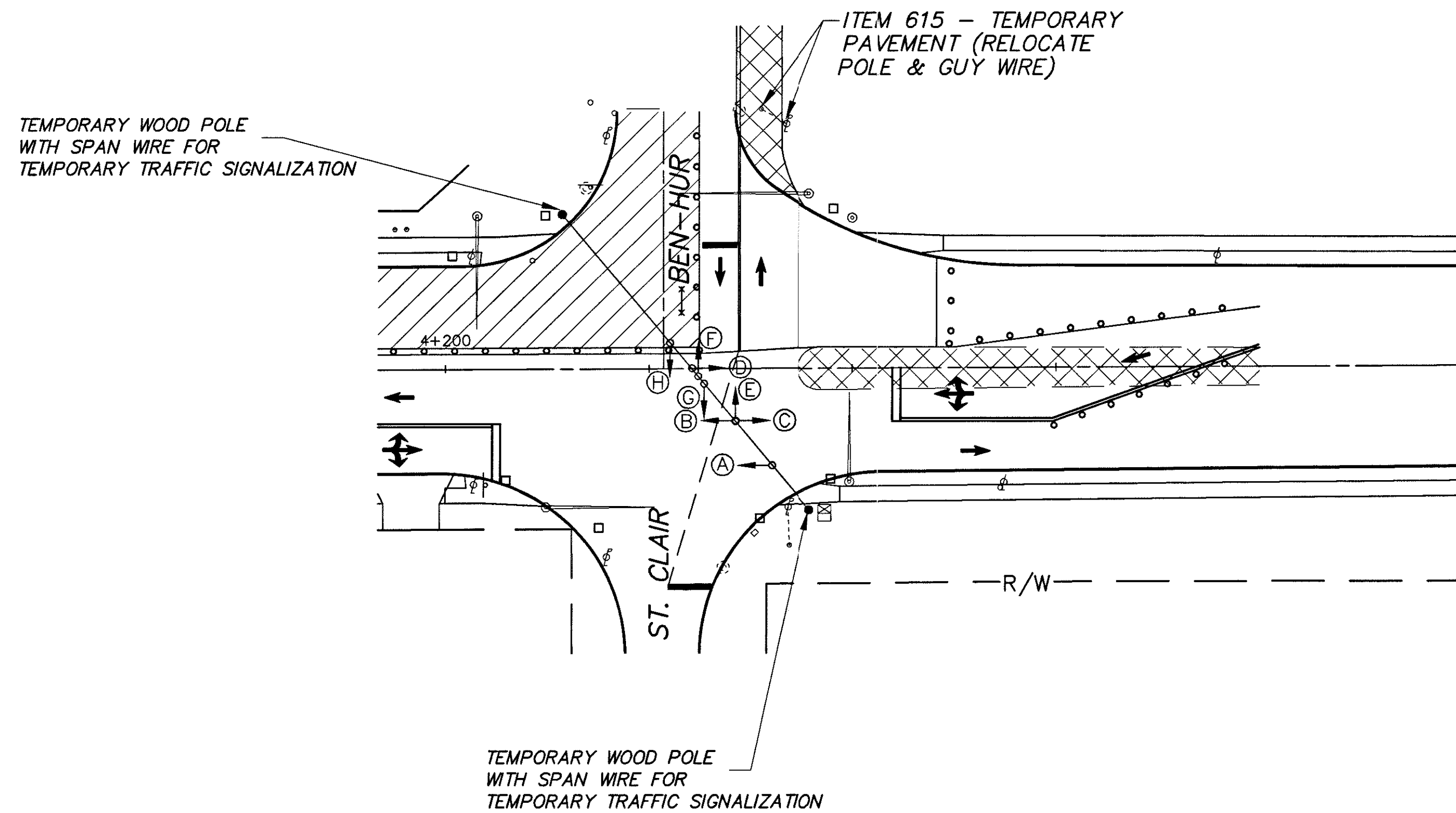


PHASING DIAGRAM

NOTE: ALL EXISTING SIGNALS TO BE COVERED.



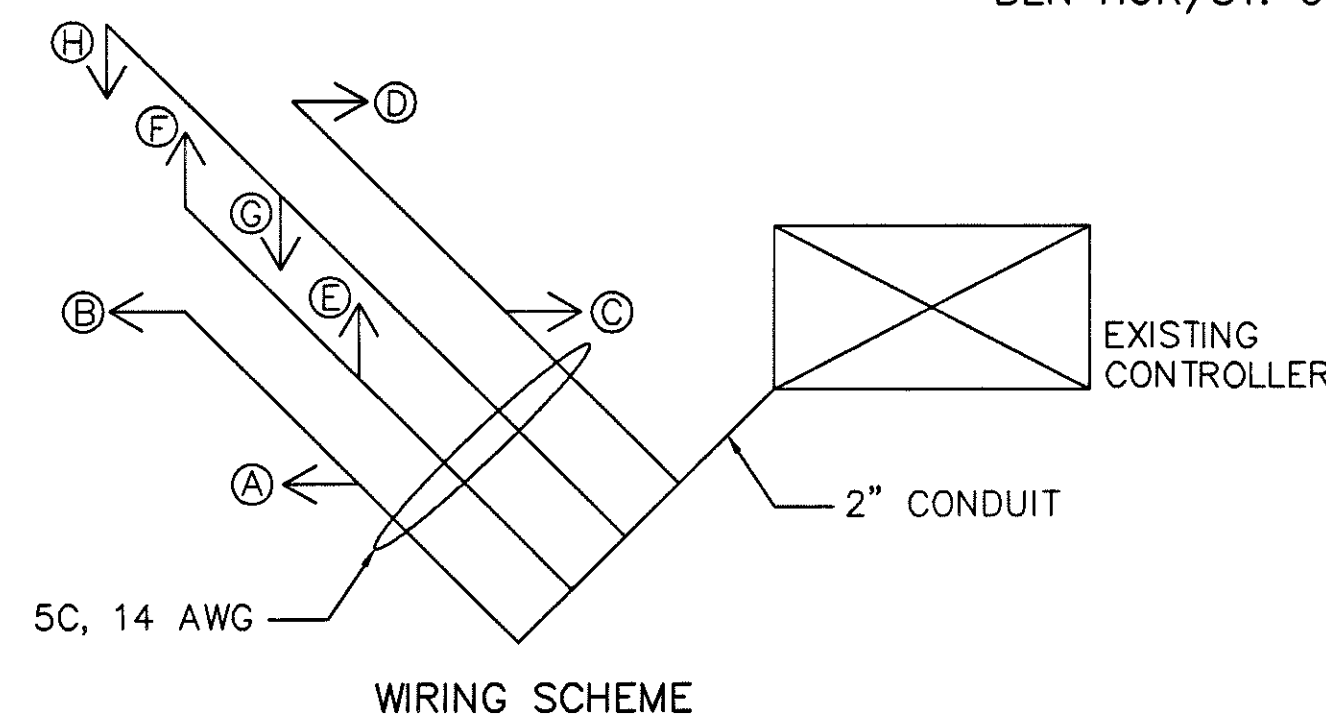
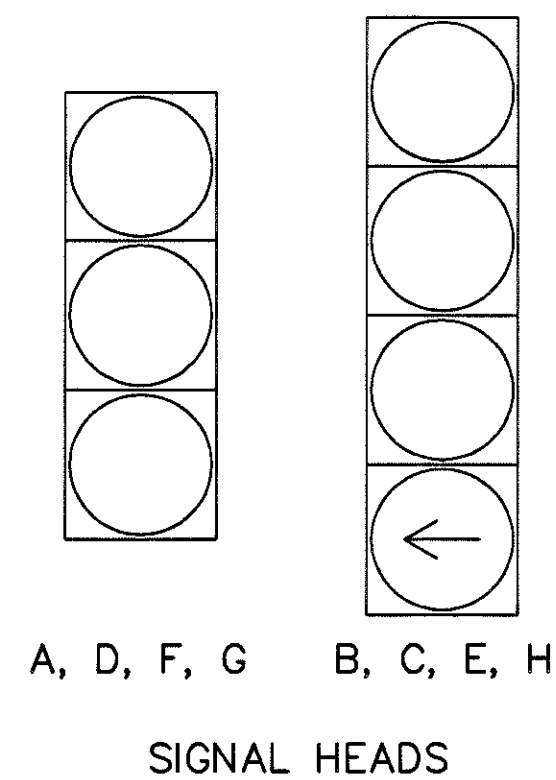
BEN HUR/ST. CLAIR PHASE I CONSTRUCTION



BEN HUR/ST. CLAIR PHASE II CONSTRUCTION

TIMING CHART

TRAFFIC SIGNAL INTERVAL	Φ <sub>1</sub>	Φ <sub>2</sub>	Φ <sub>3</sub>
VEHICLE MAXIMUM	30	30	15
VEHICLE GREEN	30	30	15
MINIMUM YELLOW VEHICLE CLEARANCE	3	3	3
ALL RED VEHICLE CLEARANCE	2	2	2



TIMING CHART

TRAFFIC SIGNAL INTERVAL	Φ <sub>1</sub>	Φ <sub>2</sub>	Φ <sub>3</sub>
VEHICLE MAXIMUM	30	30	15
VEHICLE GREEN	30	30	15
MINIMUM YELLOW VEHICLE CLEARANCE	3	3	3
ALL RED VEHICLE CLEARANCE	2	2	2

ST. CLAIR/BEN HUR  
TEMPORARY SIGNALIZATION

LAK-640-3.444

50B  
214