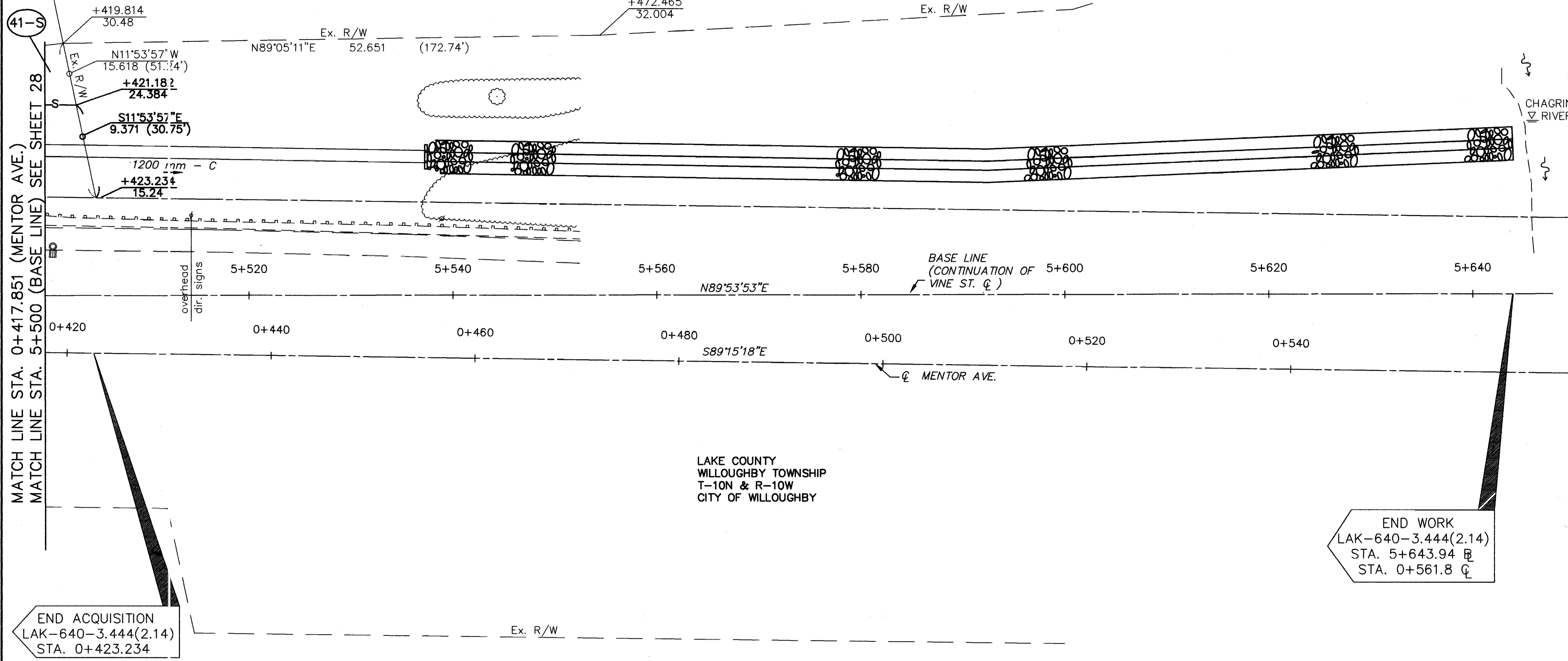


WILLOUGHBY CORNER LTD.
AN OHIO LIMITED LIABILITY COMPANY
#970015922
5-15-97
27A-30-05

CITY OF WILLOUGHBY



MATCH LINE STA. 0+417.851 (MENTOR AVE.)
MATCH LINE STA. 5+500 (BASE LINE) SEE SHEET 28

END ACQUISITION
LAK-640-3.444(2.14)
STA. 0+423.234

END WORK
LAK-640-3.444(2.14)
STA. 5+643.94 @
STA. 0+561.8 CL

LAKE COUNTY
WILLOUGHBY TOWNSHIP
T-10N & R-10W
CITY OF WILLOUGHBY

NOTES: BASIS OF BEARING FOR THIS PROJECT IS
AS ESTABLISHED ON PRIOR PROJECT
PLANS LAK-2-0.00.

BASIS OF STATIONING FOR THIS PROJECT
IS AS ESTABLISHED ON PRIOR PROJECT
PLANS LAK-20-5.54 FOR ROADWAY EAST
OF ERIE STREET.

EXISTING RIGHT OF WAY LOCATION AND WIDTH
DETERMINED USING RIGHT OF WAY PLAN SH.
NOS. 79 AND 80 FROM PRIOR PROJECT PLANS
LAK-20-5.54.

REV.	DATE	DESCRIPTION
DATE OF COMPLETION		

1:200
RATIO IN METERS

PID NO. 13722

STATE JOB NO. 124390

RIGHT OF WAY PLAN
STA. 5+500 (BASE LINE) TO STA. 5+643.94 (BASE LINE)

LAK-640-3.444(2.14)

29/29

214
214