

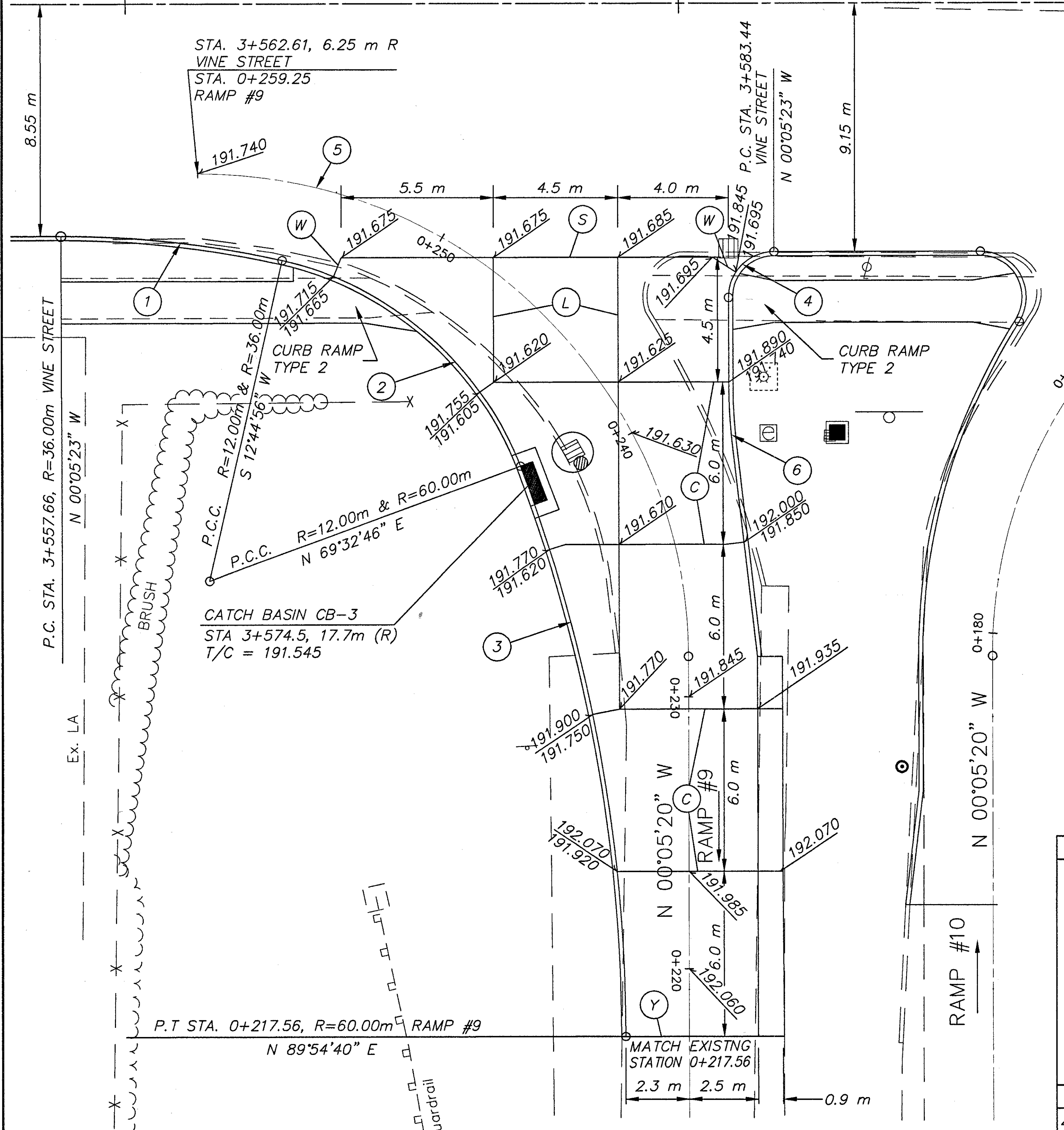
VINE STREET N 89°54'37" E

3+560

3+580

3+600

STA. 3+562.61, 6.25 m R
VINE STREET
STA. 0+259.25
RAMP #9



CATCH BASIN CB-3
STA 3+574.5, 17.7m (R)
T/C = 191.545

P.T. STA. 0+217.56, R=60.00m RAMP #9
N 89°54'40" E

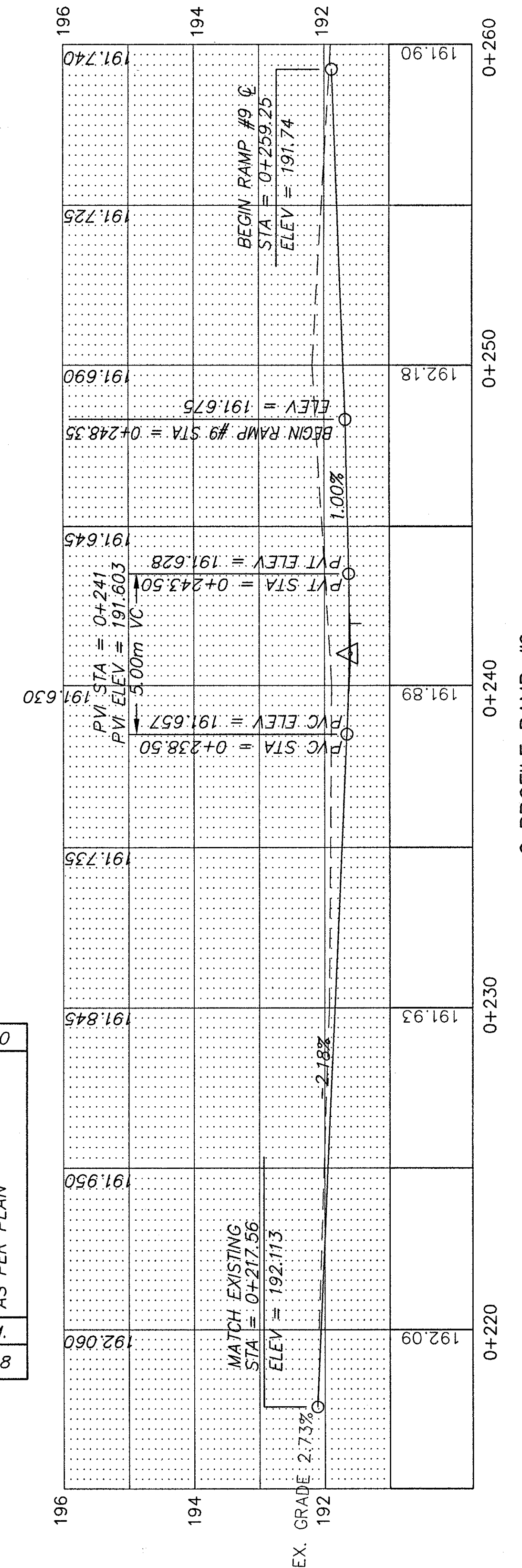
CURVE DATA TO FACE OF CURB

Curve #	1	2	3	4	5	6
Δ	12°50'19"	56°47'50"	20°21'51"	90°00'00"	90°00'00"	6°30'22"
R	36.000 m	12.000 m	60.000 m	1.650 m	17.680 m	20.000 m
T	4.050 m	6.488 m	10.776 m	1.650 m	17.680 m	1.137 m
L	8.067 m	11.895 m	21.325 m	L = 2.592 m	L = 27.772 m	L = 2.271 m
C	8.050 m	11.414 m	21.213 m	C = 2.334 m	C = 25.003 m	C = 2.270 m
E	0.227 m	E = 1.642 m	E = 0.960 m	E = 0.684 m	E = 7.323 m	E = 0.032 m

LEGEND

- (C) CONTRACTION JOINT AS PER B.P.-2.2M
- (L) LONGITUDINAL JOINT AS PER B.P.-2.1M
- (S) LONGITUDINAL JOINT AS PER B.P.-2.1M WITHOUT TIE BARS
- (W) EXPANSION JOINT AS PER B.P.-2.2M WITHOUT TIE BARS
- (Y) BUTT JOINT, TYPE Y, AS PER B.P.-2.5M

202	203	203	203	608	608	255	304	451	830	660
PAVEMENT REMOVED	EXCAVATION, NOT INCLUDING EMBANKMENT CONSTRUCTION	EMBANKMENT	SUBGRADE COMPACTION	100 mm CONC. WALK	CURB RAMP TYPE 2	FULL DEPTH PAVEMENT SAWING	150 mm AGGREGATE BASE AS PER PLAN	230 mm REINFORCED CONCRETE PAVEMENT	CURB TYPE, 2A	SODDING, UNSTAKED AS PER PLAN
S.M.	C.M.	C.M.	S.M.	S.M.	EA.	m	C.M.	S.M.	m	S.M.
452.20	41.2	12.6	461.51	20.14	2	4.80	69.23	461.51	56.59	42.8



PROFILE RAMP #9

EXTRA AREA RAMP #9

LAK-640-3.444