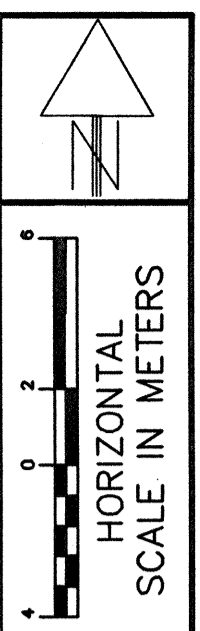
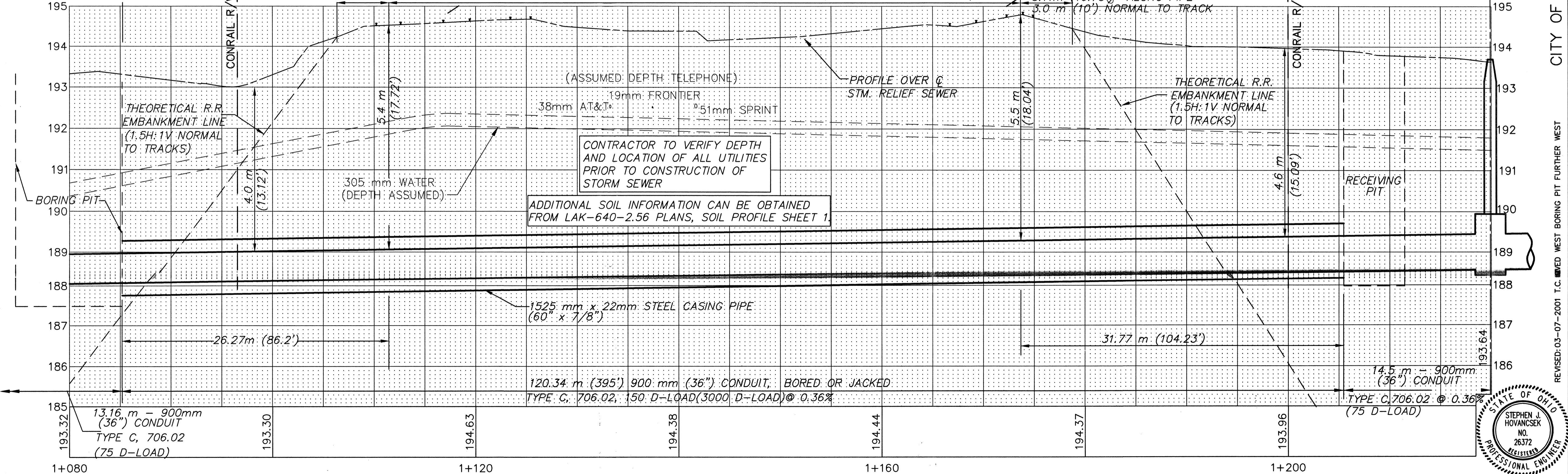
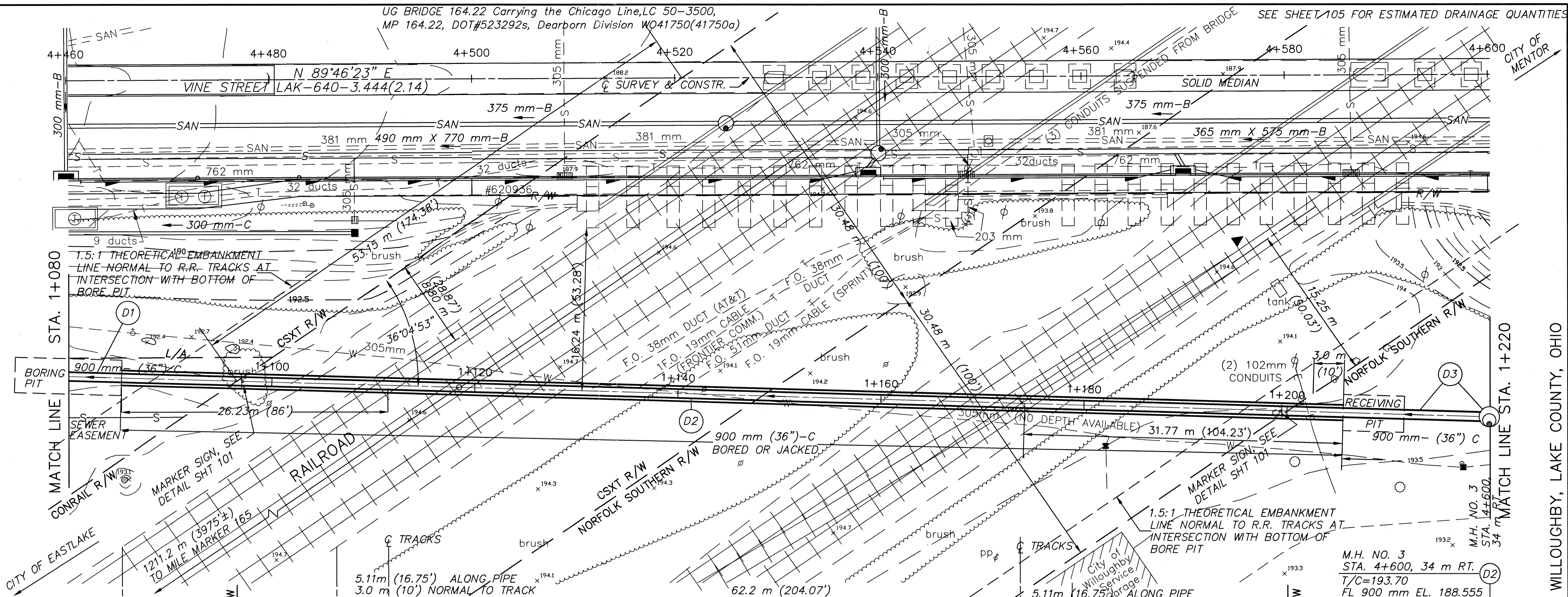


UG BRIDGE 164.22 Carrying the Chicago Line, LC 50-3500,  
MP 164.22, DOT#523292s, Dearborn Division W041750(41750a)

SEE SHEET 105 FOR ESTIMATED DRAINAGE QUANTITIES



CALC. BY:  
CHECKED BY:

CITY OF WILLOUGHBY, LAKE COUNTY, OHIO  
PROPOSED STORM RELIEF SEWER  
STA. 4+460 TO STA. 4+600

REVISED: 03-07-2001 T.C. WEST BORING PIT FURTHER WEST  
LAK-640-3.444

102  
214

