

CITY OF WILLOUGHBY
ONE PUBLIC SQUARE
WILLOUGHBY, OHIO

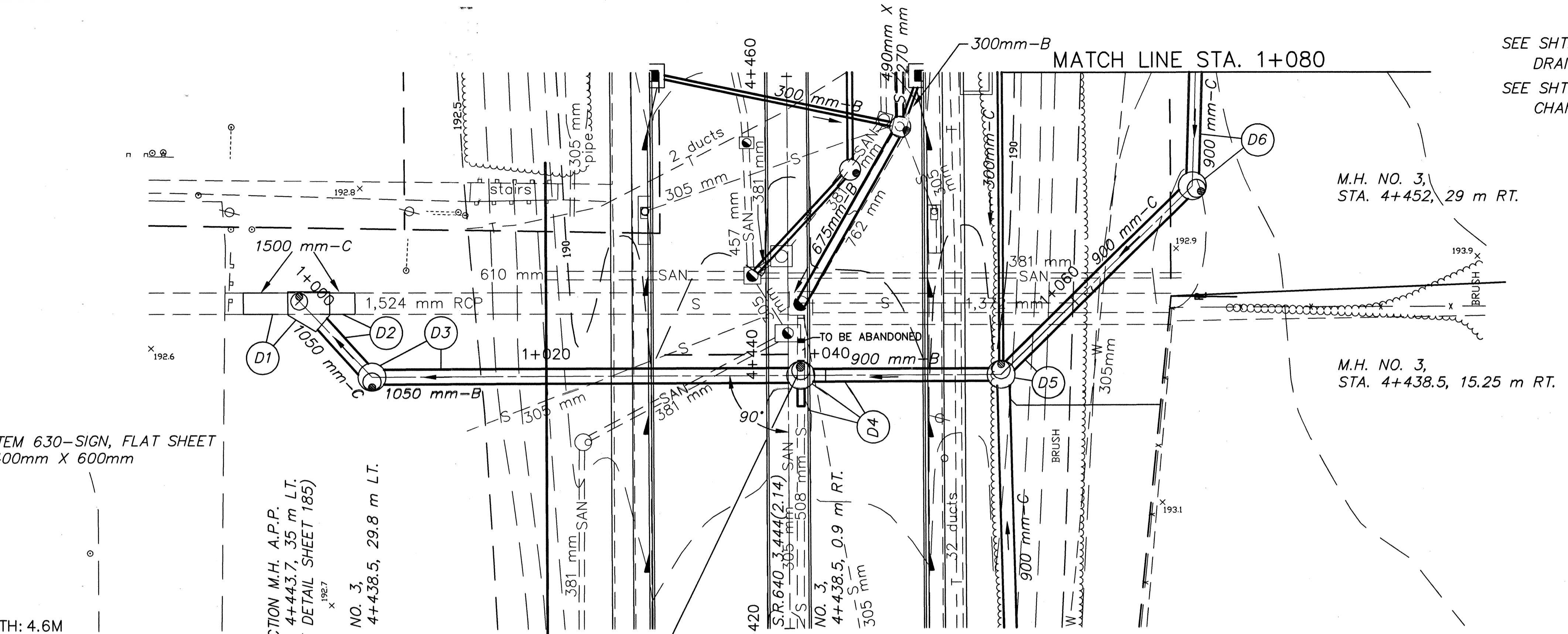
**STORM WATER
900mm(36")DIA.
GRAVITY
STORM SEWER**

PIPE DEPTH: 4.0M
(13.12') BELOW
THIS POINT

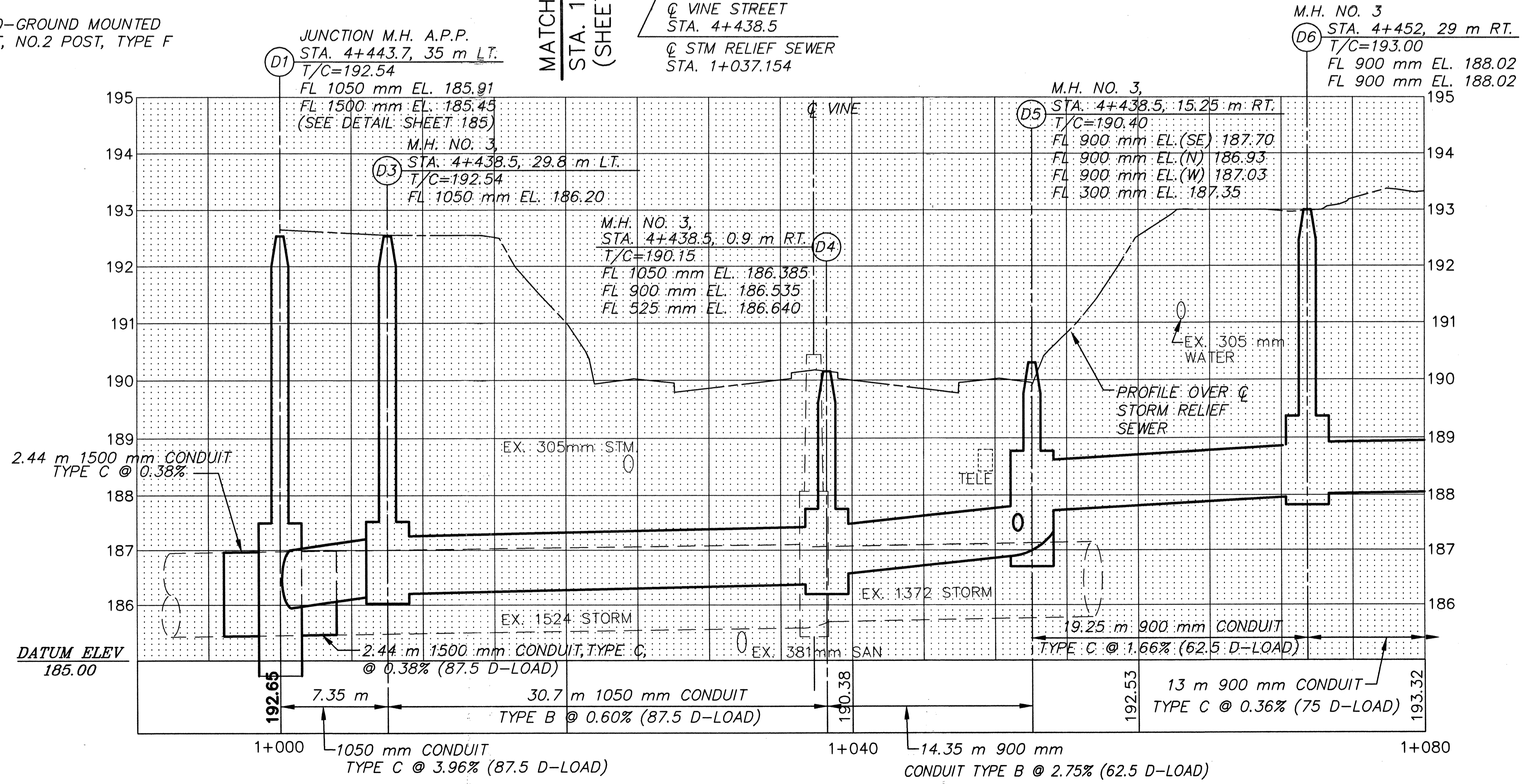
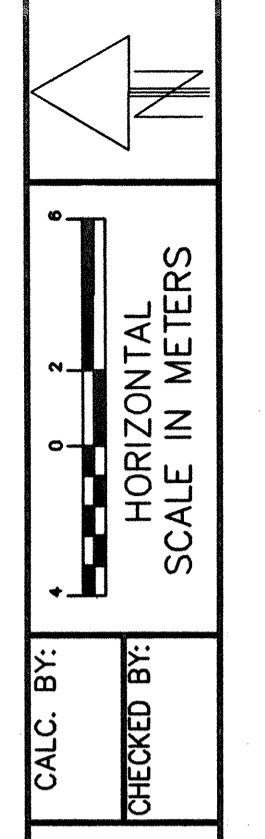
IN CASE OF EMERGENCY CALL
CITY OF WILLOUGHBY SERVICE DEPT
(440) 951-2800

PIPE DEPTH: 4.6M
(15.1') BELOW
THIS POINT
(EAST SIDE SIGN)

**SIGN DETAIL
FOR
CROSSING**
(WEST SIDE SIGN SHOWN)
(SEE SHEET 102 FOR LOCATIONS)



SEE SHT. 105 FOR ESTIMATED
DRAINAGE QUANTITIES.
SEE SHT. 185 FOR JUNCTION
CHAMBER DETAILS.



CITY OF WILLOUGHBY, LAKE COUNTY, OHIO

PROPOSED STORM RELIEF SEWER
STA. 4+420 TO STA. 4+460

LAK-640-3.444

