

SEE SHEETS 137, 183 FOR CATCH BASIN CROSS-OVERS
 SEE SHEET 201 FOR WATER WORK QUANTITIES
 SEE SHEET 61 FOR DRIVE QUANTITIES
 SEE SHEET 92 FOR ESTIMATED DRAINAGE QUANTITIES
 SEE SHEET 91 FOR CHURCH STREET INTERSECTION ENLARGEMENT.
 SEE SHEET 201 FOR UTILITY RELOCATION
 SEE SHEETS 174, 176 FOR CHURCH STREET EXTRA AREA
 SEE SHEET 60 FOR CONNECTION SCHEDULE
 SEE SHEET 187 FOR TYPE A MANHOLE DETAILS
 SEE SHEET 56 FOR ITEM 202-FENCE REMOVED FOR STORAGE, A.P.P.

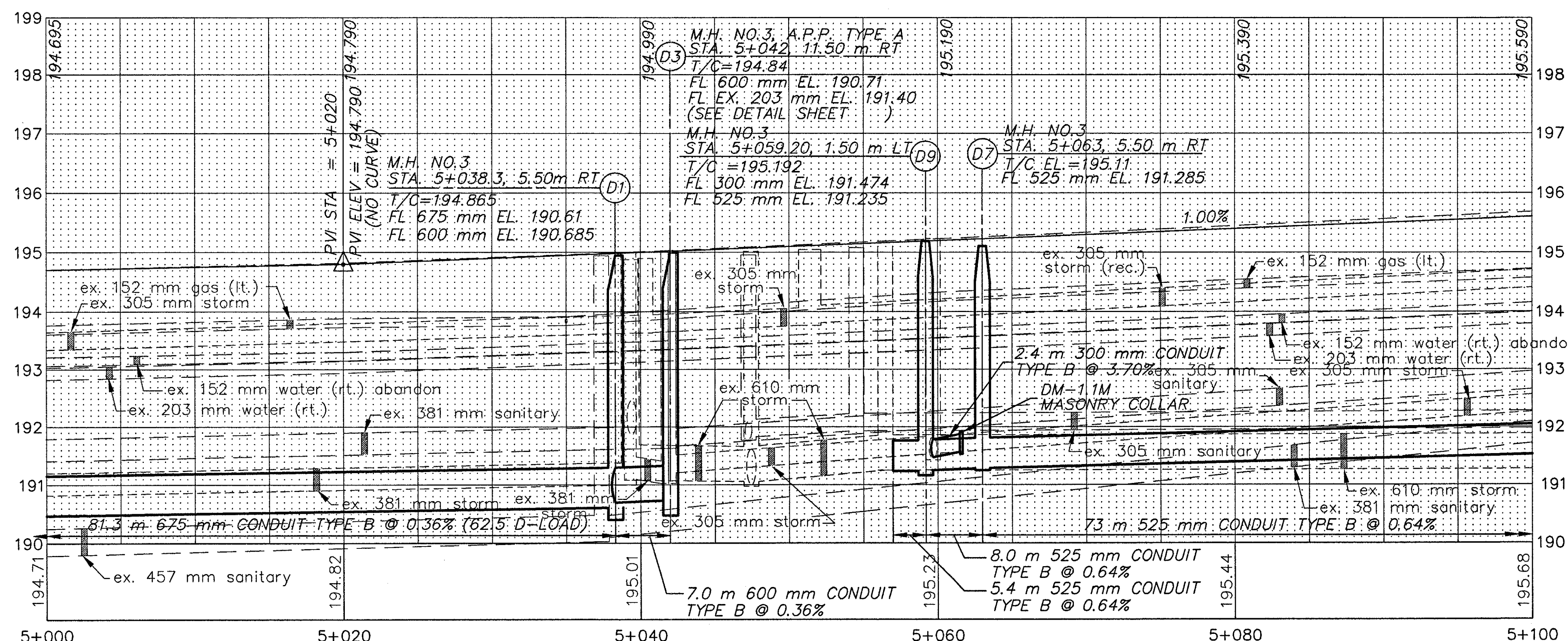
LEGEND

- W --- EX. WATER LINE
- SAN --- EX. SANITARY LINE
- G --- EX. GAS LINE
- S --- EX. STORM LINE
- T --- EX. TELEPHONE LINE

BENCH MARK: ELEV. 195.618
 STA. 5+030.59, OFFSET 6.97 m RT.
 HYDRANT
 TOP STEM

(*) 707.41 NON-PERFORATED,
 ASTM D-3034 SDR 35,
 707.33 OR 707.42

REFERENCE NUMBER	STATION		SIDE	UNDERDRAINS		BENDS AND BRANCHES FOR INFORMATION ONLY 150 mm X 45°
	FROM	TO		603	605	
	ELEV.	ELEV.		150 mm CONDUIT, TYPE F (*) METER	150 mm SHALLOW PIPE UNDERDRAIN WITH FABRIC WRAP METER	
U1	5+000	5+035.1	L	35	35	
	193.425	193.70				
U2	5+035.1	5+037.4	L	3	6.2	1
	193.70	193.615				
U3	5+037.4	5+037.4	L	3	5.7	1
	193.615	193.655				
U4	5+044.5	5+044.5	L	3	5.7	1
	193.655	193.615				
U5	5+044.5	5+058.5	L	3	18.4	1
	193.615	193.905				
U6	5+060	5+100	L	3	37	1
	193.920	194.32				
U7	5+000	5+035.2	R		35.4	
	193.425	193.715				
U8	5+035.2	5+037.4	R	3	2.1	1
	193.715	193.585				
U9	5+037.4	5+037.4	R	3	19.3	1
	193.585	194.055				
U10	5+044.5	5+044.5	R	3	19.3	1
	194.045	193.605				
U11	5+044.5	5+058.5	R	3	13.9	1
	193.605	193.905				
U12	5+060	5+100	R	3	37	1
	193.920	194.32				
TOTALS CARRIED TO SHEET 92				30	235	10



PLAN AND PROFILE SHEET
 STA. 5+000 TO STA. 5+100 S.R. 640
 LAK-640-3.444
 90
 214