

CALC. BY:  
CHECKED BY:

PLAN AND PROFILE SHEET  
STA. 4+500 TO STA. 4+600 S.R. 640

LAK-640-3.444

83  
214

SEE SHEETS 123, 182 FOR CATCH BASIN CROSS-OVERS  
SEE SHEET 85 FOR ESTIMATED DRAINAGE QUANTITIES  
SEE SHEET 199 FOR UTILITY RELOCATION  
SEE SHEET 183A FOR DRAINAGE DETAILS

\*\* PIPE TO BE INSTALLED TO MAINTAIN POSITIVE DRAINAGE FROM THE NORTH SIDE OF VINE ST. DURING PHASE I CONSTRUCTION. PIPE SHALL BE ABANDONED BY PLUGGING DURING PHASE II CONSTRUCTION.

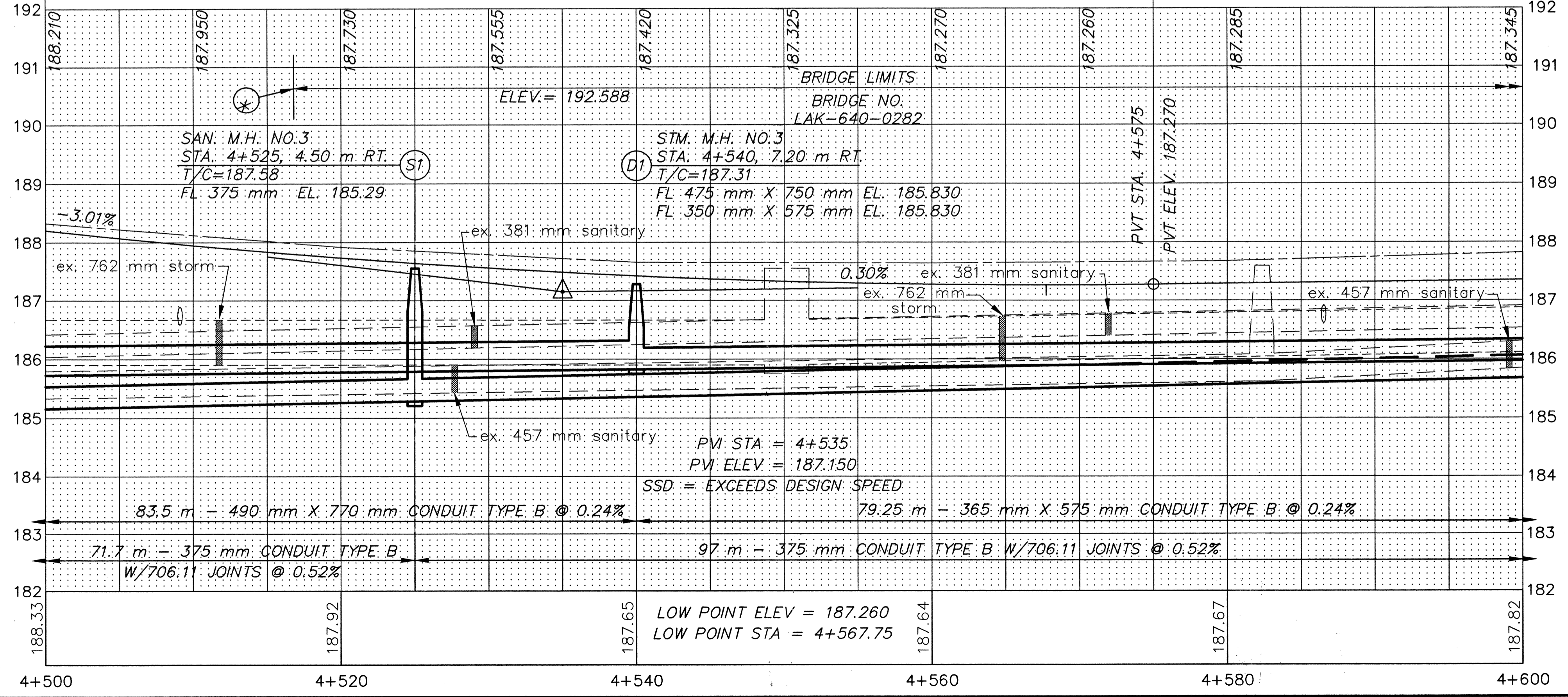
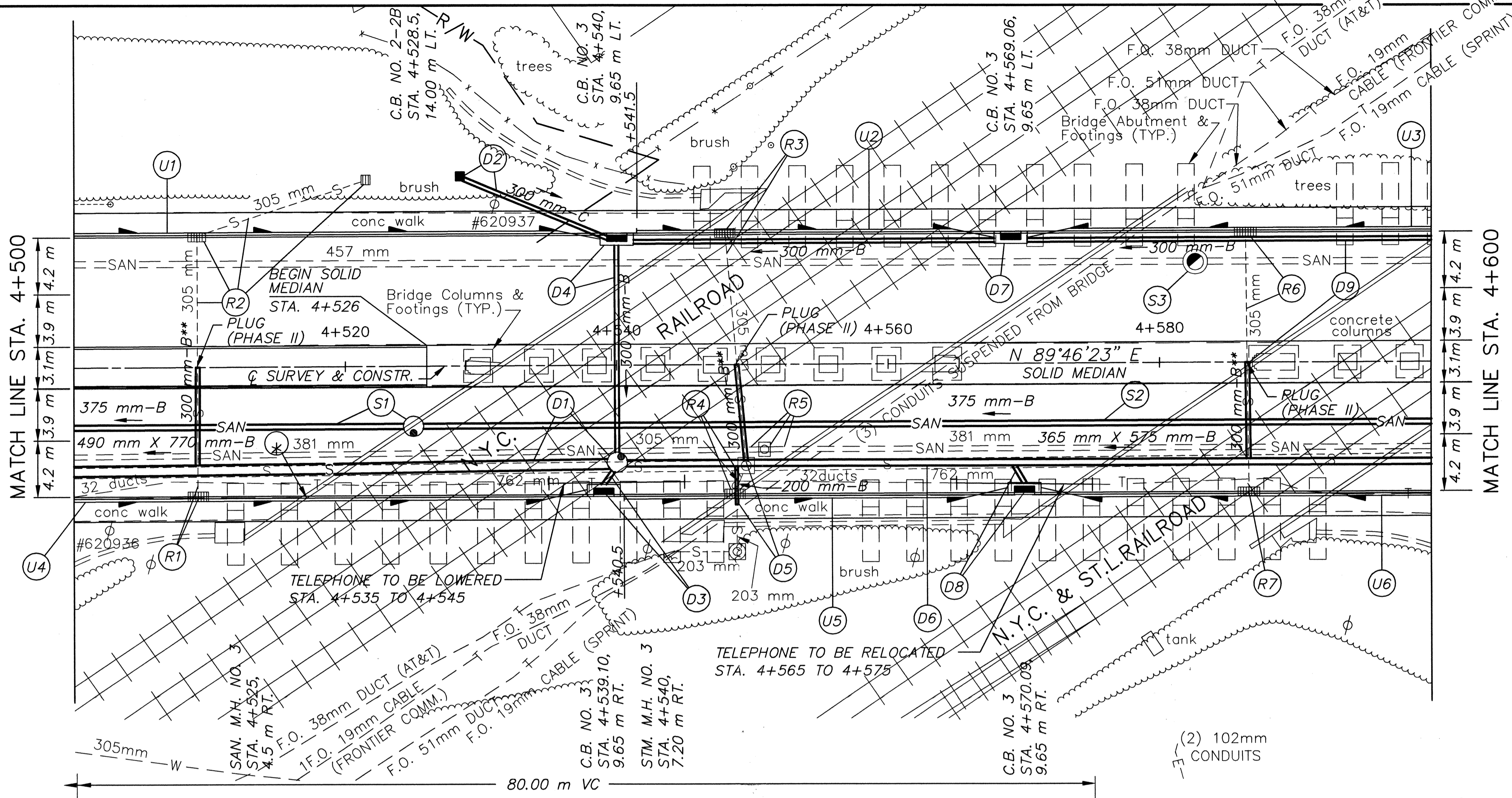
LEGEND

- W --- EX. WATER LINE
- SAN --- EX. SANITARY LINE
- G --- EX. GAS LINE
- S --- EX. STORM LINE
- T --- EX. TELEPHONE LINE

(\*) CRITICAL BRIDGE CLEARANCE  
STA. 4+516.81  
CLEARANCE = 4.95 m  
(SEE SHT. 193 FOR BRIDGE CLEARANCES)

BENCH MARK: ELEV. 192.710  
STA. 4+510.5, OFFSET 12.5 m RT.  
TOP RETAINING WALL  
PAINT MARK

(\*) 707.41 NON-PERFORATED,  
ASTM D-3034 SDR 35,  
707.33 OR 707.42



| REFERENCE NUMBER           |  | STATION            |                    | SIDE | UNDERDRAINS                |   | BENDS AND BRANCHES FOR INFORMATION ONLY |
|----------------------------|--|--------------------|--------------------|------|----------------------------|---|---|
|                            |  | FROM               | TO                 |      | 150 mm CONDUIT, TYPE F (*) | 150 mm SHALLOW PIPE UNDERDRAIN WITH FABRIC WRAP |   |
|                            |  | ELEV.              | ELEV.              |      | METER                      | METER   | EACH                                    |
| U1                         |  | 4+500<br>186.925   | 4+540<br>186.135   | L    | 3                          | 37  | 1                                       |
| U2                         |  | 4+541.5<br>186.115 | 4+569<br>185.975   | L    | 3                          | 24.4  | 1                                       |
| U3                         |  | 4+569<br>185.975   | 4+600<br>186.060   | L    | 3                          | 28.0  | 1                                       |
| U4                         |  | 4+500<br>186.925   | 4+539<br>186.140   | R    | 3                          | 36.0  | 1                                       |
| U5                         |  | 4+540.5<br>186.130 | 4+570.1<br>185.975 | R    | 3                          | 26.6  | 1                                       |
| U6                         |  | 4+570.1<br>185.975 | 4+600<br>186.060   | R    | 3                          | 26.9  | 1                                       |
| TOTALS CARRIED TO SHEET 85 |  |                    |                    |      | 18                         | 178.9   | 6                                       |