

CALC. BY:
CHECKED BY:

PLAN AND PROFILE SHEET
STA. 4+400 TO STA. 4+500 S.R.: 640

LAK-640-3.444

81
214

SEE SHEETS 122 FOR CATCH BASIN CROSS-OVERS
SEE SHEET 101-104 FOR 900 mm STORM AND 1050 mm STORM
SEE SHEET 60 FOR STORM CONNECTION QUANTITIES
SEE SHEET 82 FOR ESTIMATED DRAINAGE QUANTITIES
SEE SHEET 198 FOR UTILITY RELOCATION

LEGEND

- W --- EX. WATER LINE
- SAN --- EX. SANITARY LINE
- G --- EX. GAS LINE
- S --- EX. STORM LINE
- T --- EX. TELEPHONE LINE

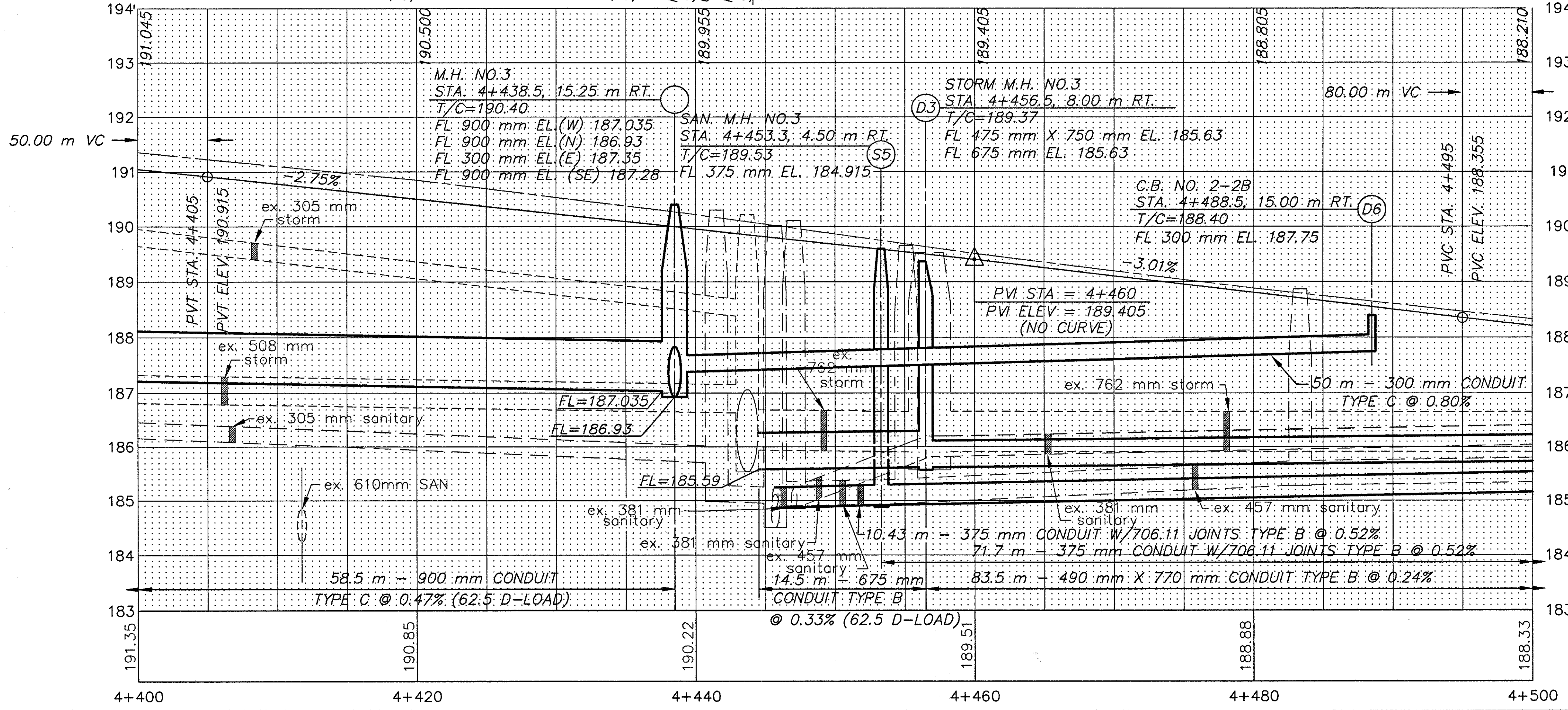
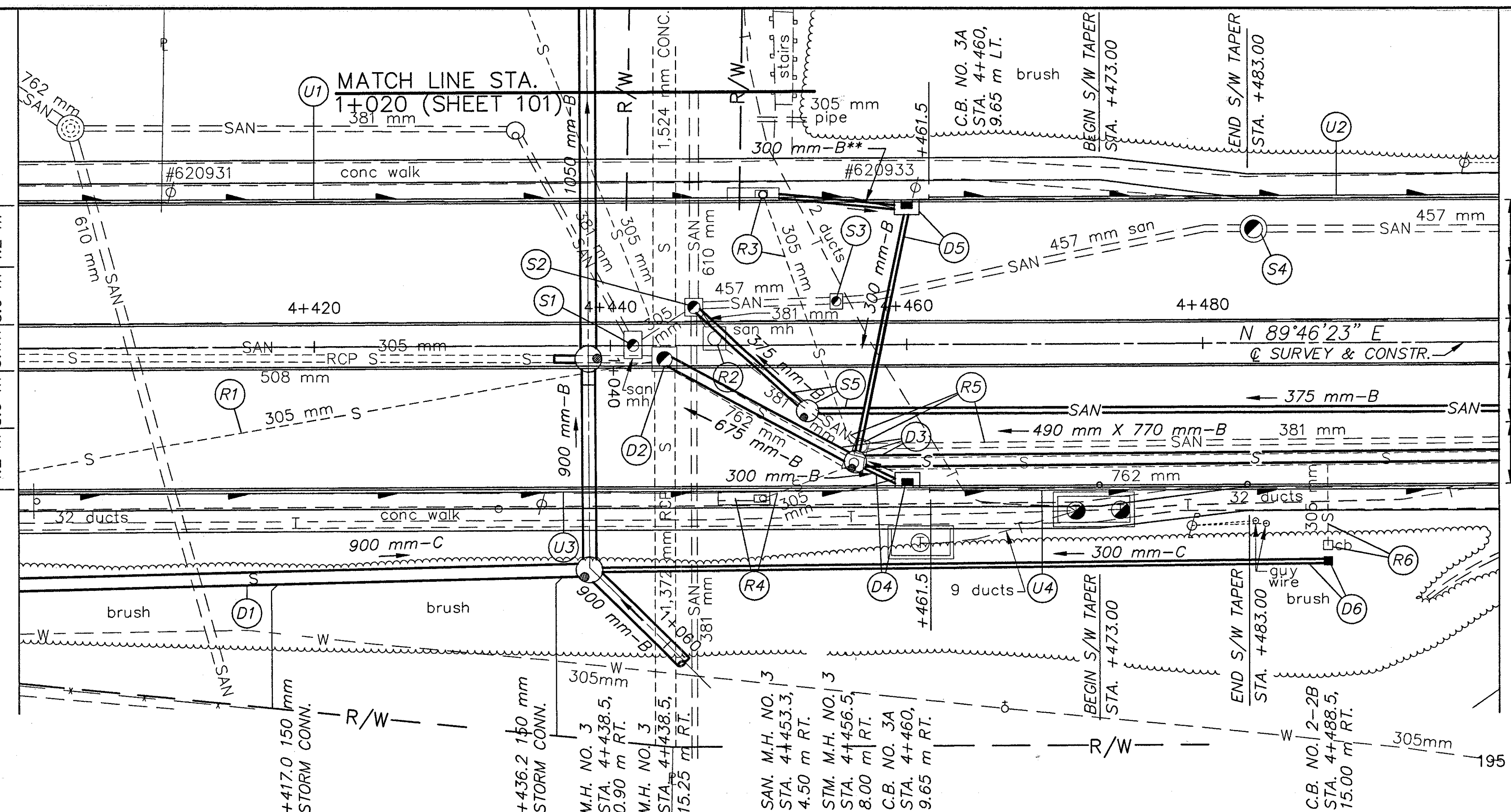
BENCH MARK: ELEV. 192.710
STA. 4+510.5, OFFSET 12.5 m RT.
TOP RETAINING WALL
PAINT MARK

** PIPE TO BE INSTALLED TO MAINTAIN POSITIVE DRAINAGE FROM NORTH SIDE OF VINE ST. DURING PHASE I CONSTRUCTION. THIS PIPE SHALL BE REMOVED AND THE CATCH BASIN BULKHEADED DURING PHASE II CONSTRUCTION.

(*) 707.41 NON-PERFORATED,
ASTM D-3034 SDR 35,
707.33 OR 707.42

MATCH LINE STA. 4+400

MATCH LINE STA. 4+500



REFERENCE NUMBER		STATION		SIDE	603		605		BENDS AND BRANCHES FOR INFORMATION ONLY
		FROM	TO		150 mm CONDUIT, TYPE F (*)	150 mm SHALLOW PIPE UNDERDRAIN WITH FABRIC WRAP	150 mm x 45°		
		ELEV.	ELEV.		METER	METER	EACH		
U1		4+400	4+460	L	3	57	1		
		189.760	188.120						
U2		4+461.5	4+500	L	38.5				
		188.075	186.925						
U3		4+400	4+460	R	3	57.0	1		
		189.76	188.120						
U4		4+461.5	4+500	R	38.5				
		188.075	186.925						
TOTALS CARRIED TO SHEET 82					6	191	2		