

SEE SHEETS 119, 121 FOR CATCH BASIN CROSS-OVERS  
 SEE SHEET 60 FOR STORM CONNECTION QUANTITIES  
 SEE SHEET 82 FOR ESTIMATED DRAINAGE QUANTITIES  
 SEE SHEET 198 FOR UTILITY RELOCATION

BENCH MARK: ELEV. 193.734  
 STA. 4+361.0, OFFSET 37.4 m LT.  
 HYDRANT  
 TOP STEM

\*\* PIPE TO BE INSTALLED TO MAINTAIN POSITIVE DRAINAGE FROM NORTH SIDE OF VINE ST. DURING PHASE I CONSTRUCTION. PIPE SHALL BE REMOVED AND THE CATCH BASIN BULKHEADED DURING PHASE II CONSTRUCTION.

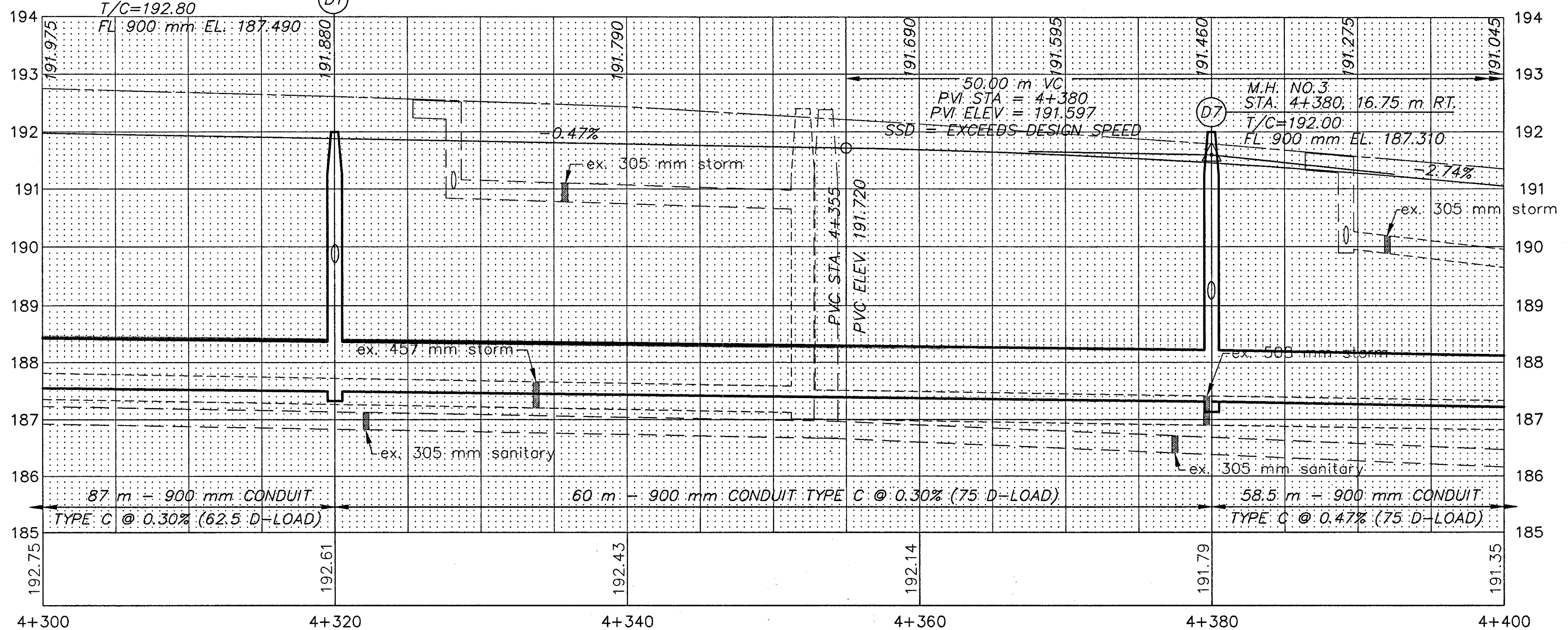
LEGEND

- W --- EX. WATER LINE
- SAN --- EX. SANITARY LINE
- G --- EX. GAS LINE
- S --- EX. STORM LINE
- T --- EX. TELEPHONE LINE

(\*) 707.41 NON-PERFORATED,  
 ASTM D-3034 SDR 35,  
 707.33 OR 707.42

UNDERDRAINS

REFERENCE NUMBER	STATION		SIDE	603		605		BENDS AND BRANCHES FOR INFORMATION ONLY 150 mm x 45°
	FROM	TO		150 mm CONDUIT, TYPE F (*) METER	150 mm SHALLOW PIPE UNDERDRAIN WITH FABRIC WRAP METER	EACH		
	E ELEV.	E ELEV.						
U1	4+300 190.690	4+324 190.570	L	3	21	1		
U2	4+325.5 190.565	4+380 190.175	L	3	51.5	1		
U3	4+381.5 190.150	4+400 189.760	L		18.5			
U4	4+300 190.690	4+320 190.595	R	3	17.0	1		
U5	4+321.5 190.585	4+380 190.175	R	3	55.5	1		
U6	4+381.5 190.150	4+400 189.760	R		18.5			
TOTALS CARRIED TO SHEET 82				12	182	4		



PLAN AND PROFILE SHEET  
 STA. 4+300 TO STA. 4+400 S.R. 640  
 LAK-640-3.444  
 80/214