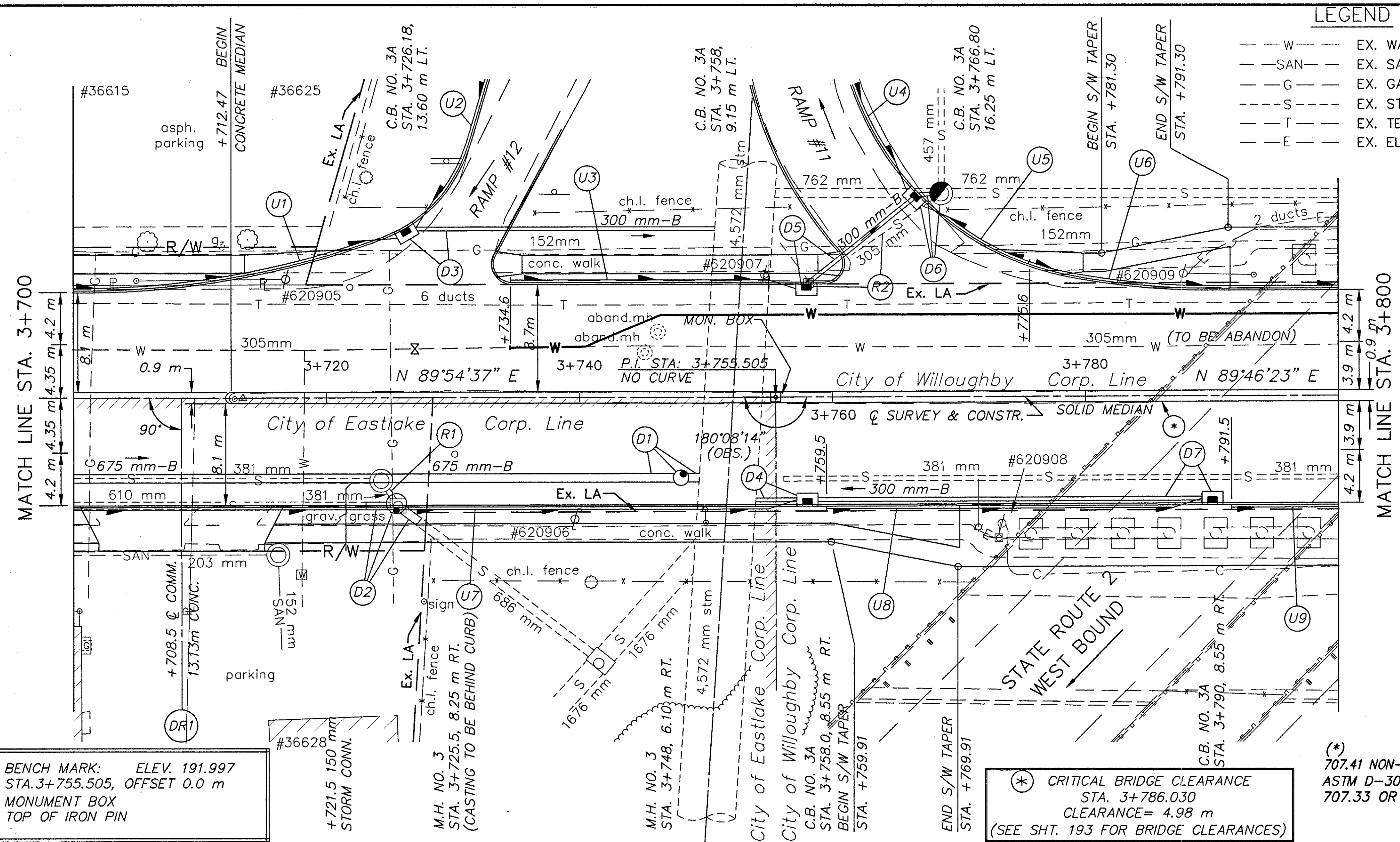
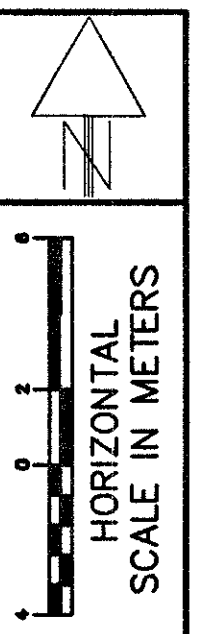


**LEGEND**

- W --- EX. WATER LINE
- SAN --- EX. SANITARY LINE
- G --- EX. GAS LINE
- S --- EX. STORM LINE
- T --- EX. TELEPHONE LINE
- E --- EX. ELECTRIC LINE

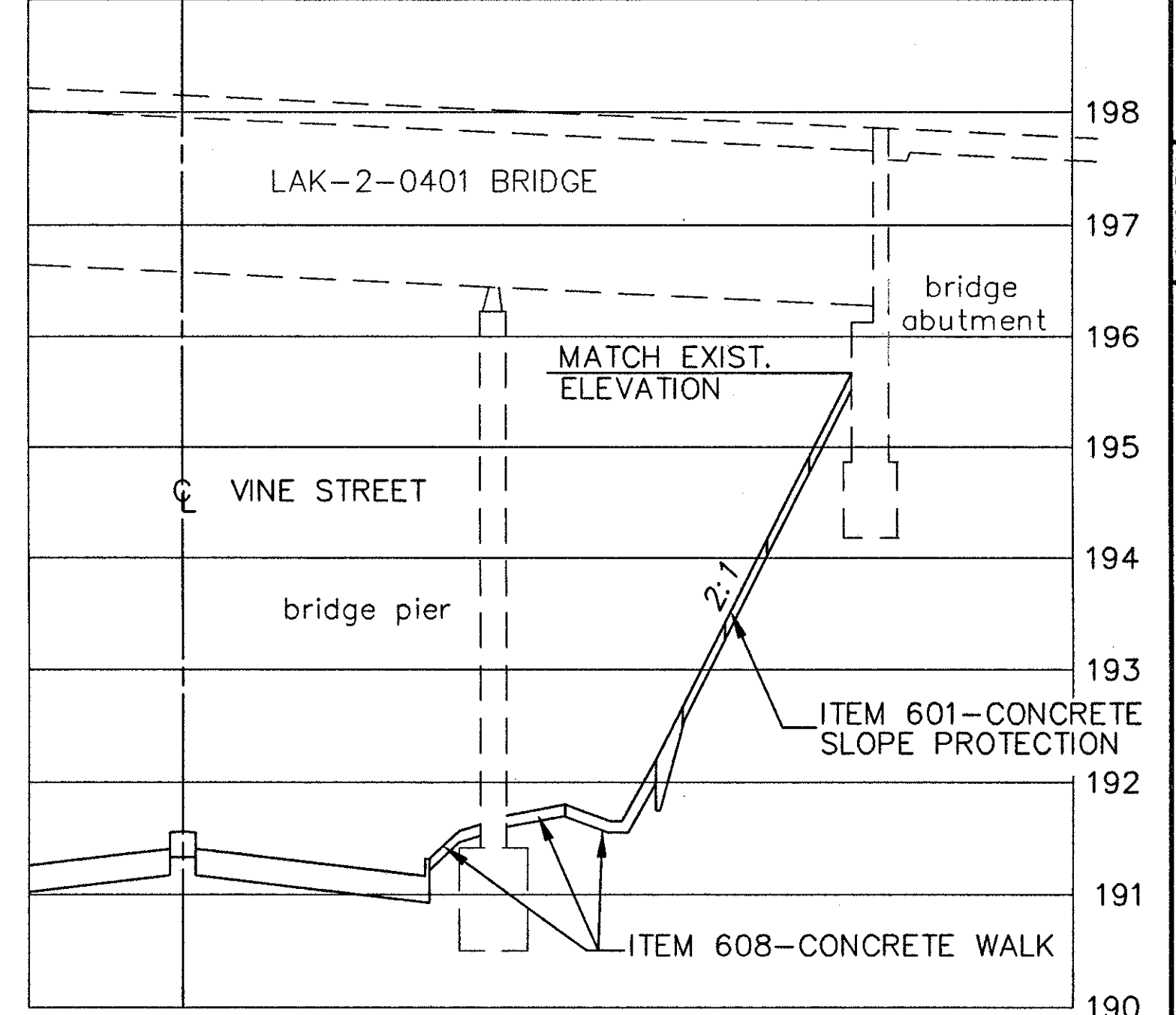
SEE SHEET 150, 153 FOR S.R.2, RAMP #11 AND RAMP #12 EXTRA AREAS  
 SEE SHEETS 180A FOR CATCH BASIN CROSS-OVERS  
 SEE SHEET 195 FOR WATER WORK QUANTITIES  
 SEE SHEET 60 FOR STORM CONNECTION QUANTITIES  
 SEE SHEET 61 FOR DRIVE QUANTITIES  
 SEE SHEET 72 FOR ESTIMATED DRAINAGE QUANTITIES  
 SEE SHEET 195 FOR UTILITY RELOCATION



BENCH MARK: ELEV. 191.997  
 STA. 3+755.505, OFFSET 0.0 m  
 MONUMENT BOX  
 TOP OF IRON PIN

(\*) CRITICAL BRIDGE CLEARANCE  
 STA. 3+786.030  
 CLEARANCE = 4.98 m  
 (SEE SHT. 193 FOR BRIDGE CLEARANCES)

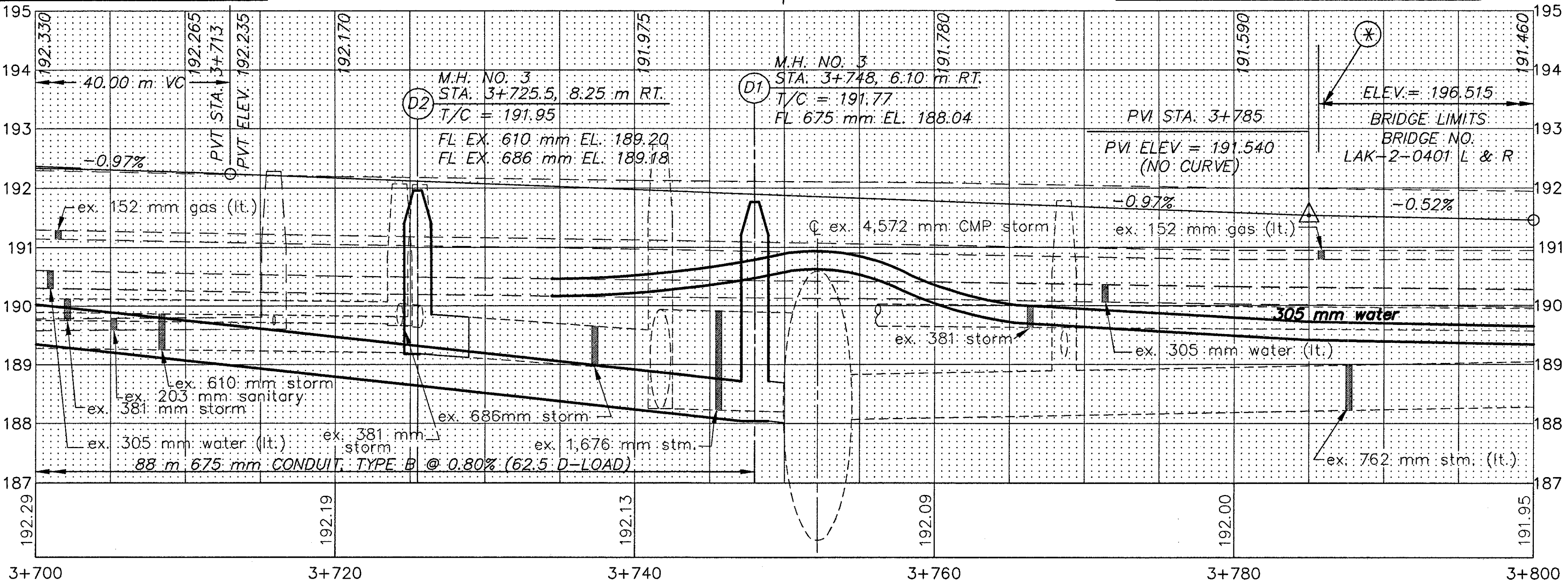
(\*) 707.41 NON-PERFORATED,  
 ASTM D-3034 SDR 35,  
 707.33 OR 707.42



TYPICAL SECTION - ITEM 601 CONCRETE SLOPE PROTECTION  
 \*FOR ITEM 601-CONCRETE SLOPE PROTECTION QUANTITIES, SEE SHEET 56

**UNDERDRAINS**

REFERENCE NUMBER	STATION		SIDE	UNDERDRAINS		BENDS AND BRANCHES FOR INFORMATION ONLY
	FROM	TO		603	605	
	ELEV.	ELEV.		150 mm CONDUIT, TYPE F (*)	150 mm SHALLOW PIPE UNDERDRAIN WITH FABRIC WRAP	
			METER	METER	150 mm X 45'	
U1	3+700	3+726.2	L	3	23.1	1
	191.035	190.70				
U2	3+726.2	3+732.5	L	3	10	1
	190.70	190.74				
U3	3+734.6	3+758	L	3	20.4	1
	190.73	190.50				
U4	3+761.0	3+766.8	L	3	19.5	1
	190.575	190.225				
U5	3+766.8	3+775.6	L	3	7.4	1
	190.225	190.30				
U6	3+775.6	3+800	L		24.7	
	190.30	190.175				
U7	3+700	3+758.0	R	3	55.0	1
	191.035	190.494				
U8	3+759.5	3+790	R	3	27.5	1
	190.480	190.225				
U9	3+791.5	3+800	R		8.5	
	190.22	190.175				
TOTALS CARRIED TO SHEET 72				21	196.1	7



PLAN AND PROFILE SHEET  
 STA. 3+700 TO STA. 3+800 S.R. 640

LAK-640-3.444