

SEE SHEETS 146, 148 FOR S.R.2, RAMP #9 AND RAMP #10 EXTRA AREAS
 SEE SHEETS 106, 107, 180A FOR CATCH BASIN CROSS-OVERS
 SEE SHEET 194 FOR WATER WORK QUANTITIES
 SEE SHEET 60 FOR STORM CONNECTION QUANTITIES
 SEE SHEET 61 FOR DRIVE QUANTITIES
 SEE SHEET 72 FOR ESTIMATED DRAINAGE QUANTITIES
 SEE SHEET 194 FOR UTILITY RELOCATION

**CONTRACTOR SHALL MAKE TEMPORARY HOOKUP FOR EXISTING 300mm STORM FROM CB AT STA. 3+550.6(LT.) INTO THE PROPOSED 150mm STORM CONNECTION BEING INSTALLED ALONG THE EXISTING TRENCH.

BENCH MARK: ELEV. 192.637
 STA. 3+537.25, OFFSET 11.92 m LT.
 HYDRANT #351
 S.W. FLANGE BOLT

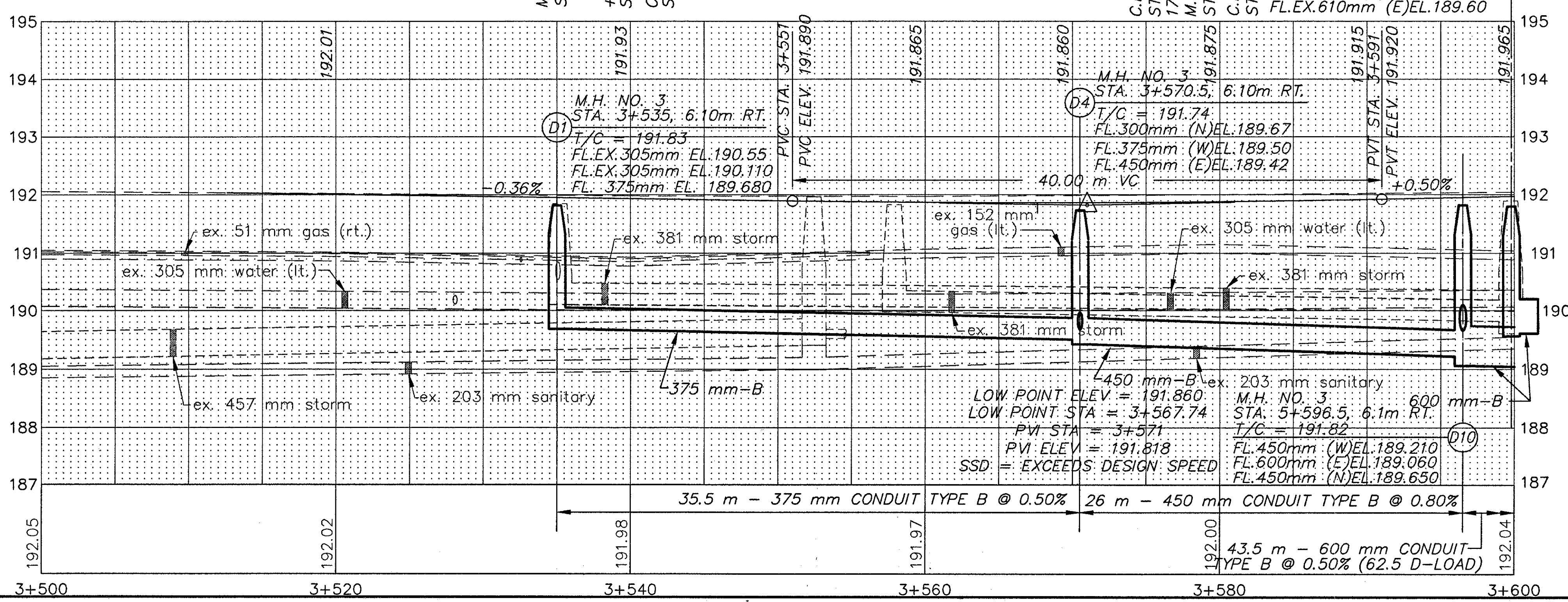
LEGEND

- W --- EX. WATER LINE
- SAN --- EX. SANITARY LINE
- G --- EX. GAS LINE
- S --- EX. STORM LINE
- T --- EX. TELEPHONE LINE

(*) 707.41 NON-PERFORATED, ASTM D-3034 SDR 35, 707.33, OR 707.42

UNDERDRAINS

REFERENCE NUMBER	STATION		SIDE	CONDUIT		BENDS AND BRANCHES FOR INFORMATION ONLY	BENDS AND BRANCHES FOR INFORMATION ONLY
	FROM	TO		150 mm CONDUIT, TYPE F (*)	150 mm SHALLOW PIPE UNDERDRAIN WITH FABRIC WRAP		
	ELEV.	ELEV.		METER	METER		
U1	3+539.3	3+562.5	L	3	20.2	1	
U2	3+564	3+570.5	L	3	3.5	1	
U3	3+570.5	3+600	L	3	26.5	1	
U4	3+537	3+540	R	3			
U5	3+541.5	3+574.5	R	3	32.4	1	
U6	3+574.5	3+577.5	R	3	17.3	1	
U7	3+586.0	3+583	R		17.3		
U8	3+585.7	3+585.7	R	3	3.5		1
U9	3+596.2	3+583			32.0		
U10	3+593.9	3+597.75	R	3	12.0	1	
U11	3+597.75	3+600	R	3		1	
TOTALS CARRIED TO SHEET 72				27	164.7	7	1



PLAN AND PROFILE SHEET
 STA. 3+500 TO STA. 3+600 S.R. 640
 LAK-640-3.444
 69
 214