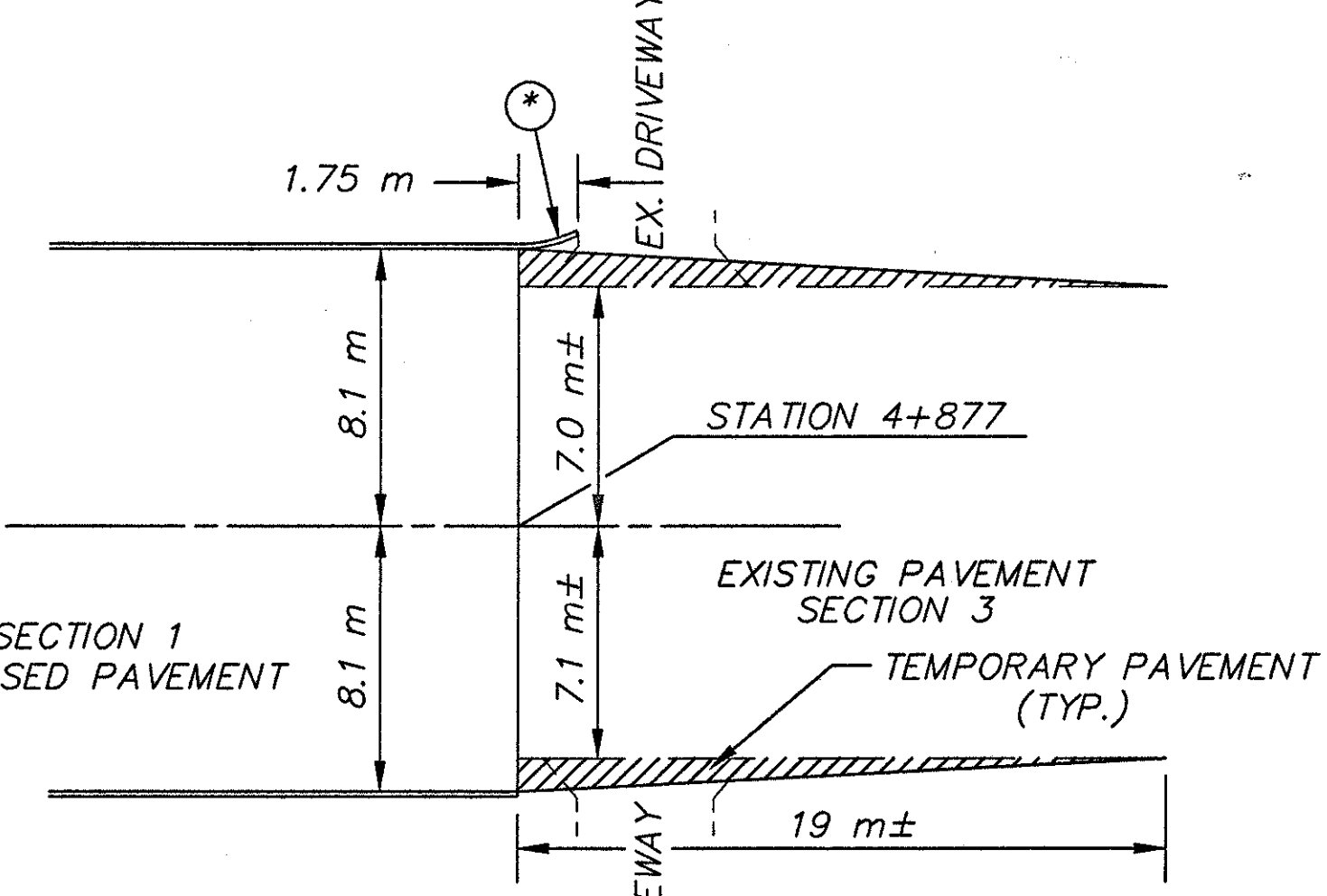


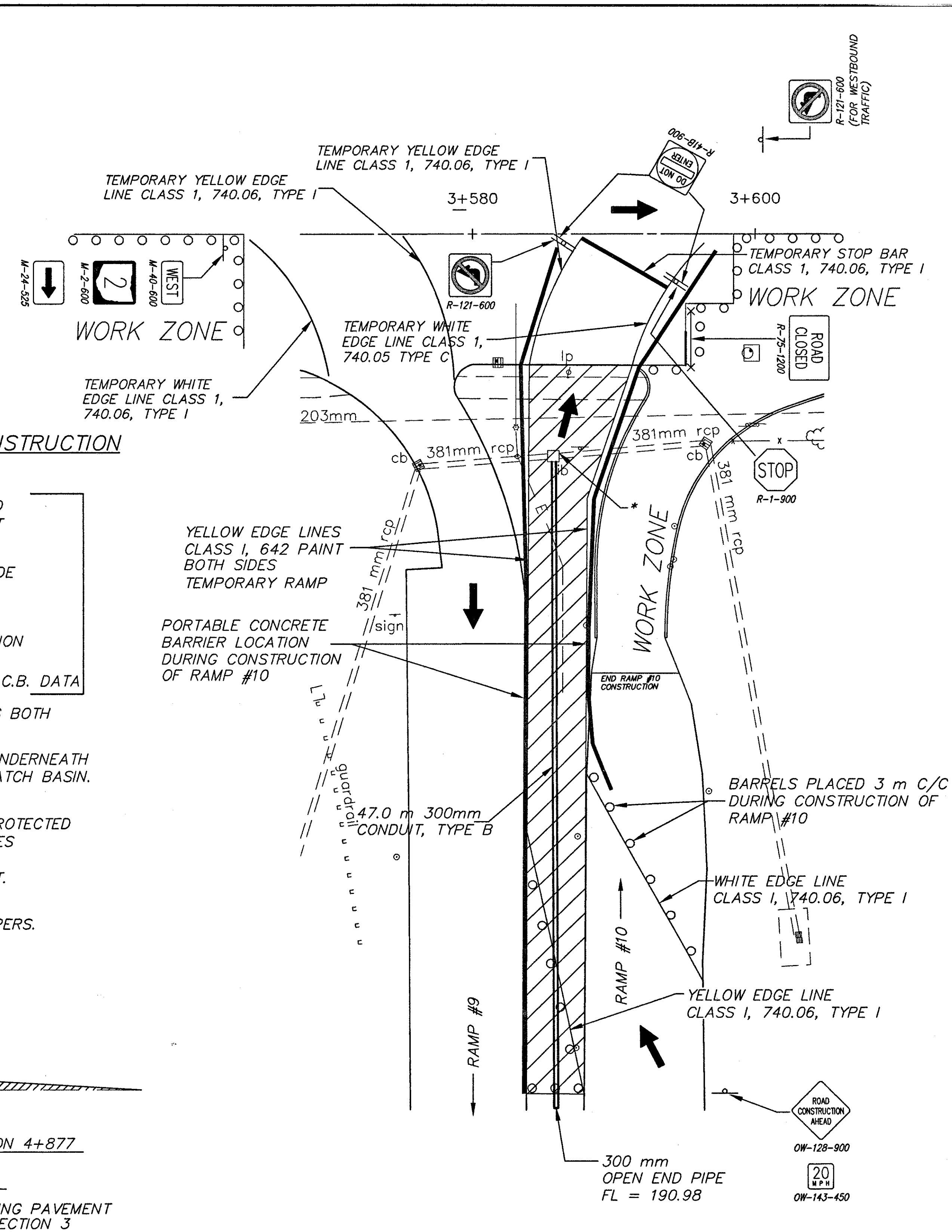
**TEMPORARY RAMP DETAIL  
RAMP #9 CLOSED**  
POSTED SPEED FOR RAMPS  
(20 MPH)

**NOTES FOR TEMPORARY RAMP CONSTRUCTION  
RAMPS 9 AND 10**

- EXISTING CATCH BASIN SHALL BE PLATED AND BURIED WITH TEMPORARY PAVEMENT TO ALLOW FOR TRAFFIC MAINTENANCE.
- EXISTING CATCH BASIN ADJUSTED TO GRADE  
T/C=191.83 +/-  
FL EX. 381=190.095  
FL 300 TEMP.=190.51  
C.B. WILL BE REPLACED AFTER CONSTRUCTION OF BOTH RAMPS IS COMPLETED  
REFER TO SHEET NO.'S 69 AND 180A FOR PROP. C.B. DATA
- YELLOW EDGE LINE WILL BE PAINTED ALONG BOTH SIDES OF TEMPORARY RAMP.
- 47 m - 300 mm CONDUIT TO BE INSTALLED UNDERNEATH THE AREA BETWEEN RAMPS. TIE INTO EXISTING CATCH BASIN. QUANTITY CARRIED TO SHEET NO. 62
- MAST ARM FOR STATE ROUTE 2 SHALL BE PROTECTED AT ALL TIMES WITH CONCRETE BARRICADES
- RAMP #10 TO BE CONSTRUCTED FIRST.
- BARRELS TO BE 3 m APART ON ALL TAPERS.
- POWER POLE TO BE RELOCATED.



**TAPERING DETAIL BETWEEN  
SECTION 1 AND SECTION 3  
STA. 4+877**



**TEMPORARY RAMP DETAIL  
RAMP #10 CLOSED**  
POSTED SPEED FOR RAMPS  
(20 MPH)

⊛ USING TYPE 6 CURB  
FLARE CURB WITH A 3 m RADIUS  
TO PROTECT EDGE FROM SNOW PLOWING  
OVER WINTER MONTHS.

**LEGEND**

TEMPORARY PAVEMENT