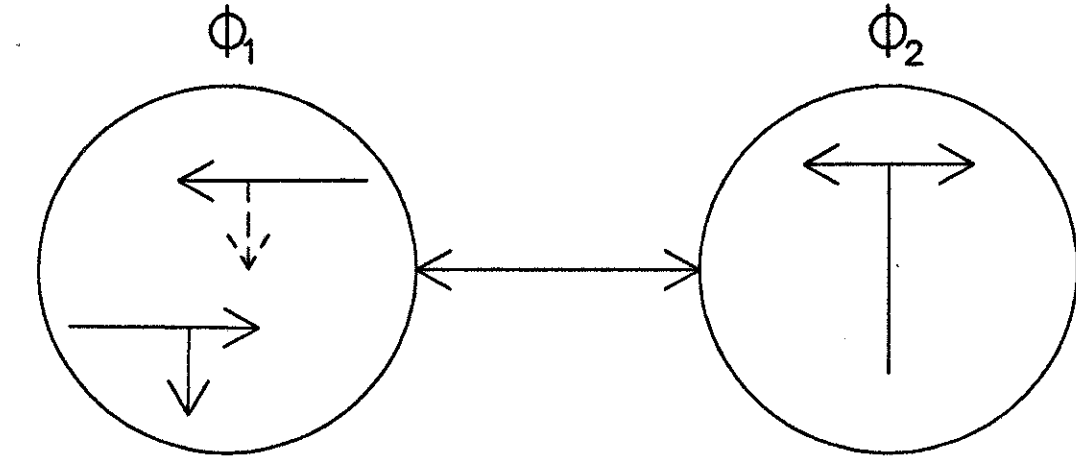


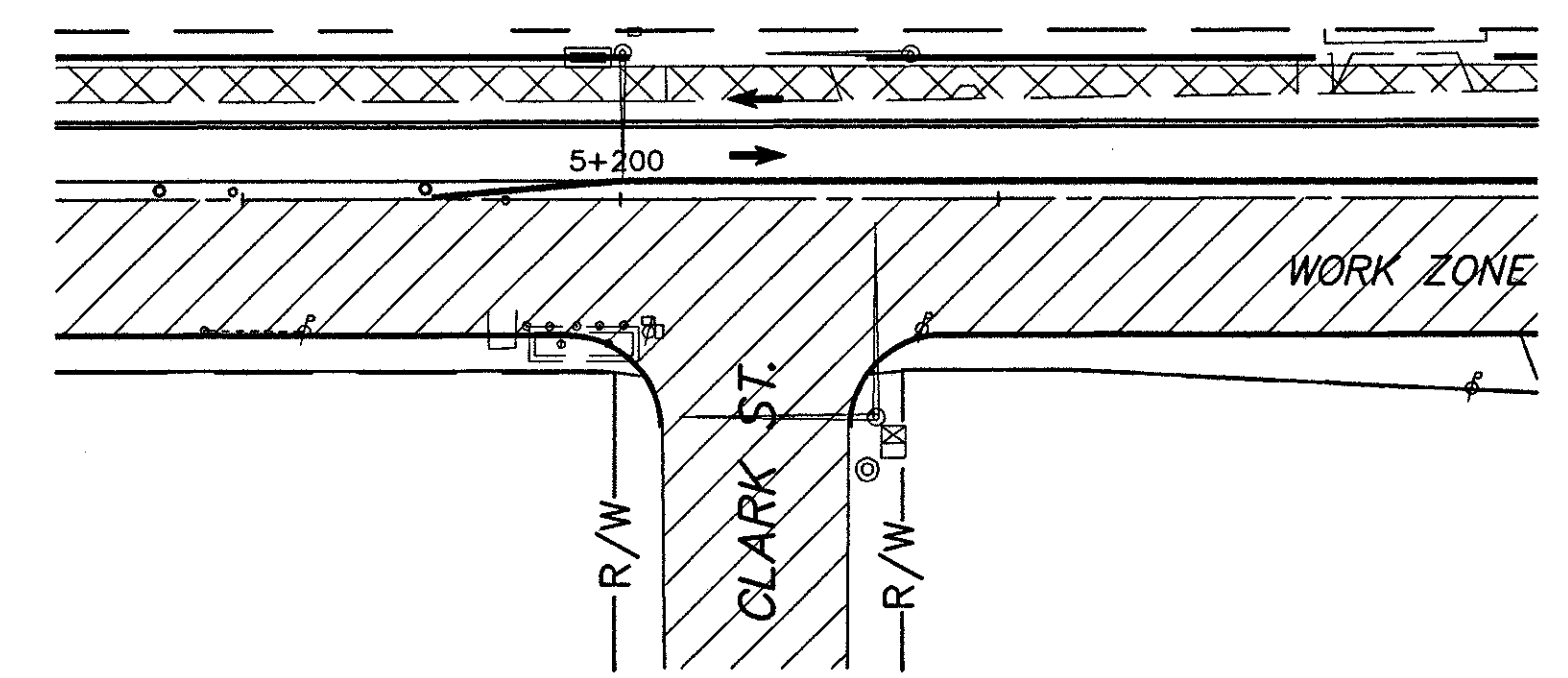
- NOTES:**
- ALL EXISTING SIGNALS NOT IN USE IN EACH PHASE SHALL BE COVERED IN THE MANNER DESCRIBED IN 632.24
  - INSTALL TWO SIGNALS AND CABLE ON EXISTING MAST ARM
  - POWER SUPPLIED FROM EXISTING CONTROLLER
  - ALL SIGNALS TO BE COVERED IN PHASE I



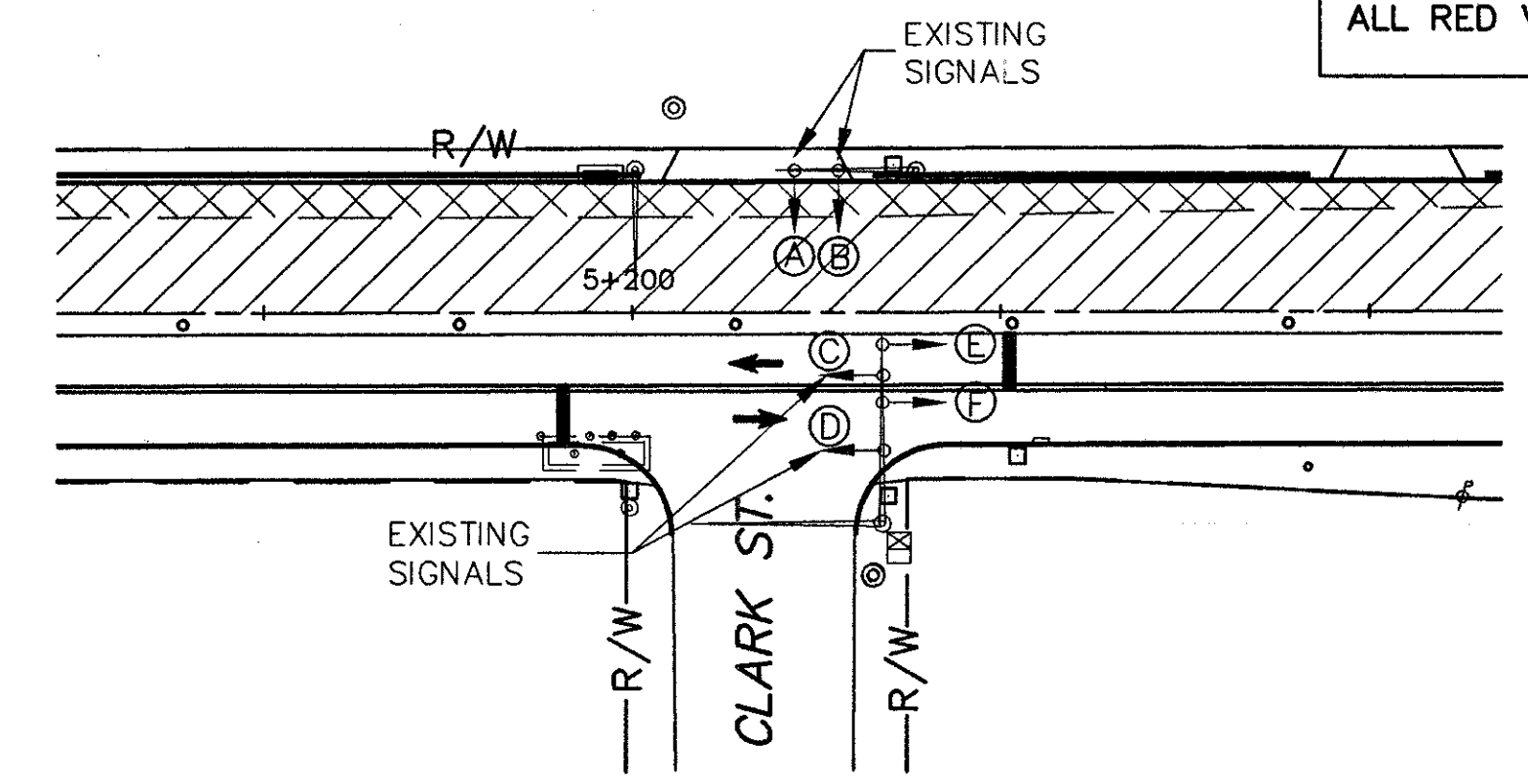
PHASING DIAGRAM

**TIMING CHART**

| TRAFFIC SIGNAL INTERVAL          | Φ <sub>1</sub> | Φ <sub>2</sub> |
|----------------------------------|----------------|----------------|
| VEHICLE MAXIMUM                  | 60             | 15             |
| VEHICLE GREEN                    | 60             | 15             |
| MINIMUM YELLOW VEHICLE CLEARANCE | 3              | 3              |
| ALL RED VEHICLE CLEARANCE        | 2              | 2              |



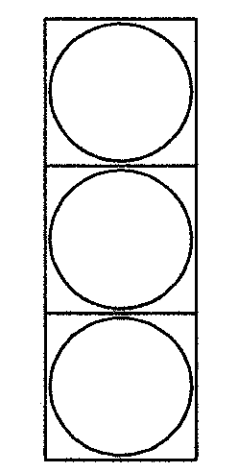
CLARK STREET PHASE I CONSTRUCTION  
 \* ALL EXISTING SIGNALS TO BE COVERED



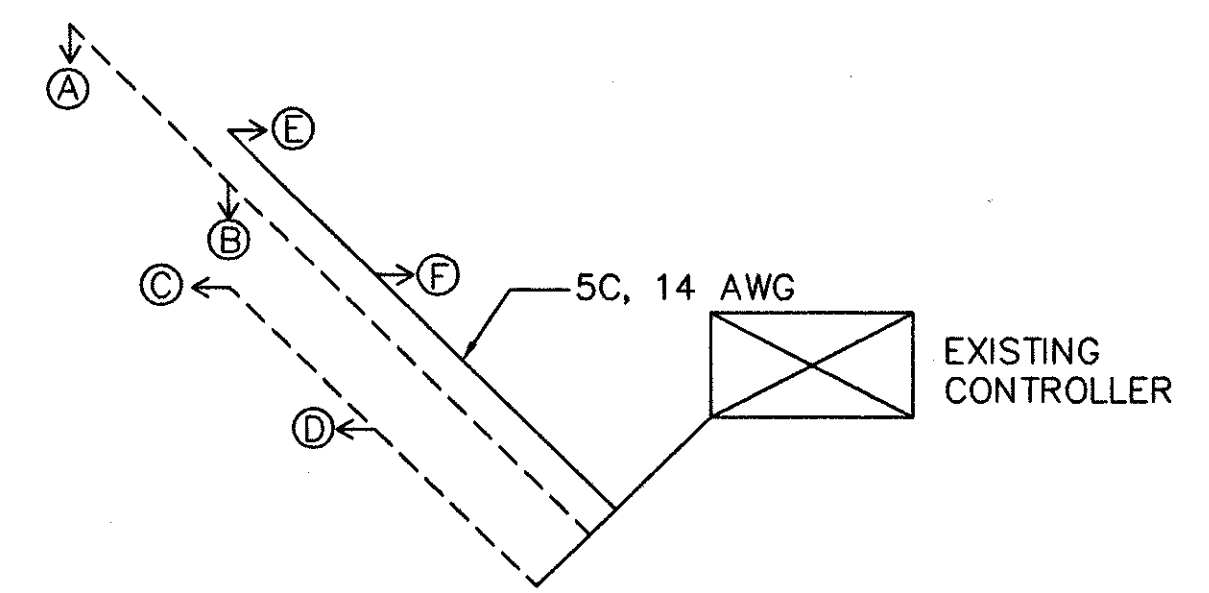
CLARK STREET PHASE II CONSTRUCTION

**SUMMARY OF TEMPORARY SIGNAL QUANTITIES**

| ITEM | TOTAL | UNIT  | DESCRIPTION   |
|------|-------|-------|---|
| 632  | 2     | EA.   | VEHICULAR SIGNAL HEADS, 3 SECTIONS, 300mm LENS, 1 WAY |
| 632  | 21.5  | METER | SIGNAL CABLE, 5 CONDUCTORS, NO HANG.                  |



E, F  
 SIGNAL HEADS



WIRING SCHEME  
 \*SIGNALS A, B, C, D ARE EXISTING