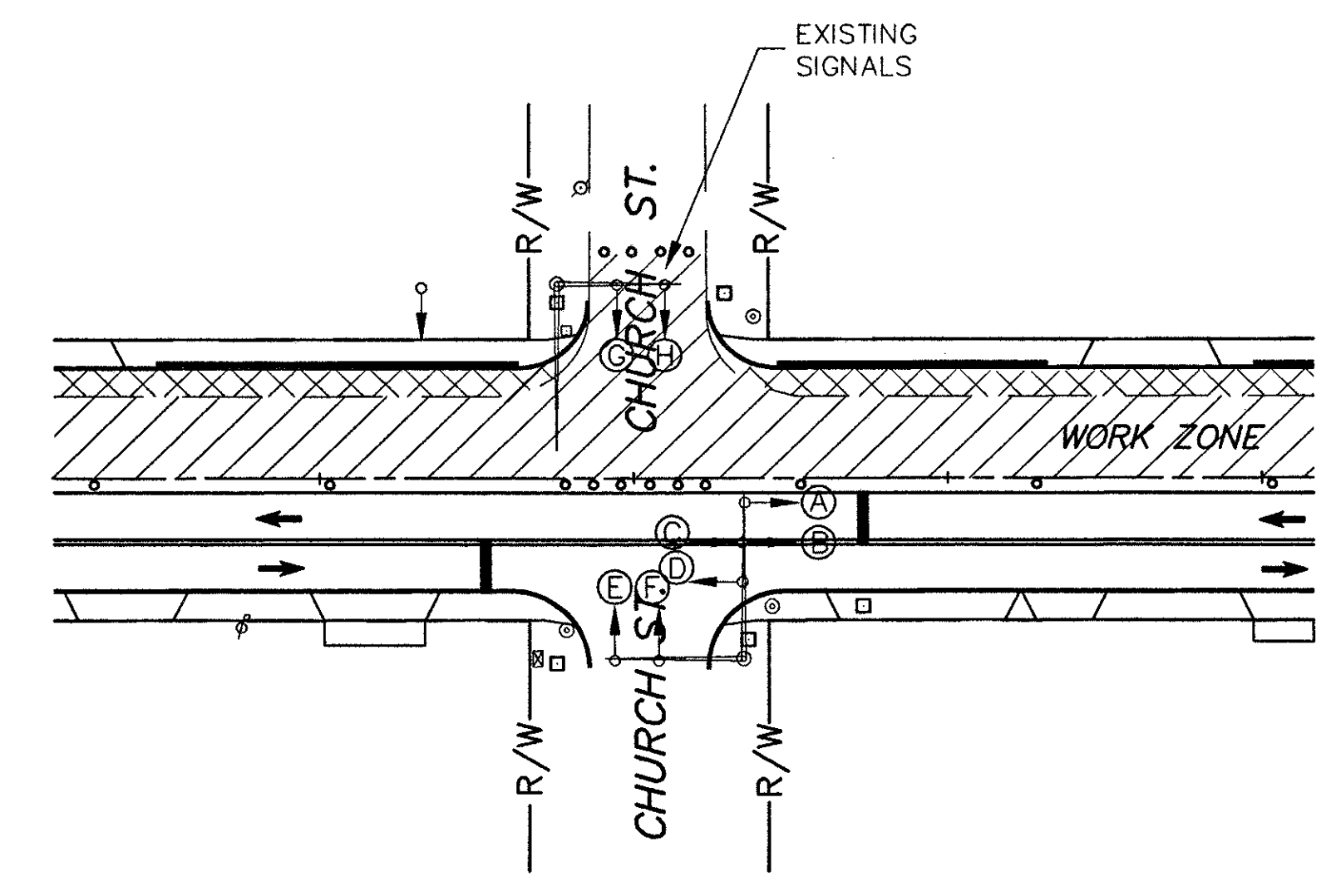
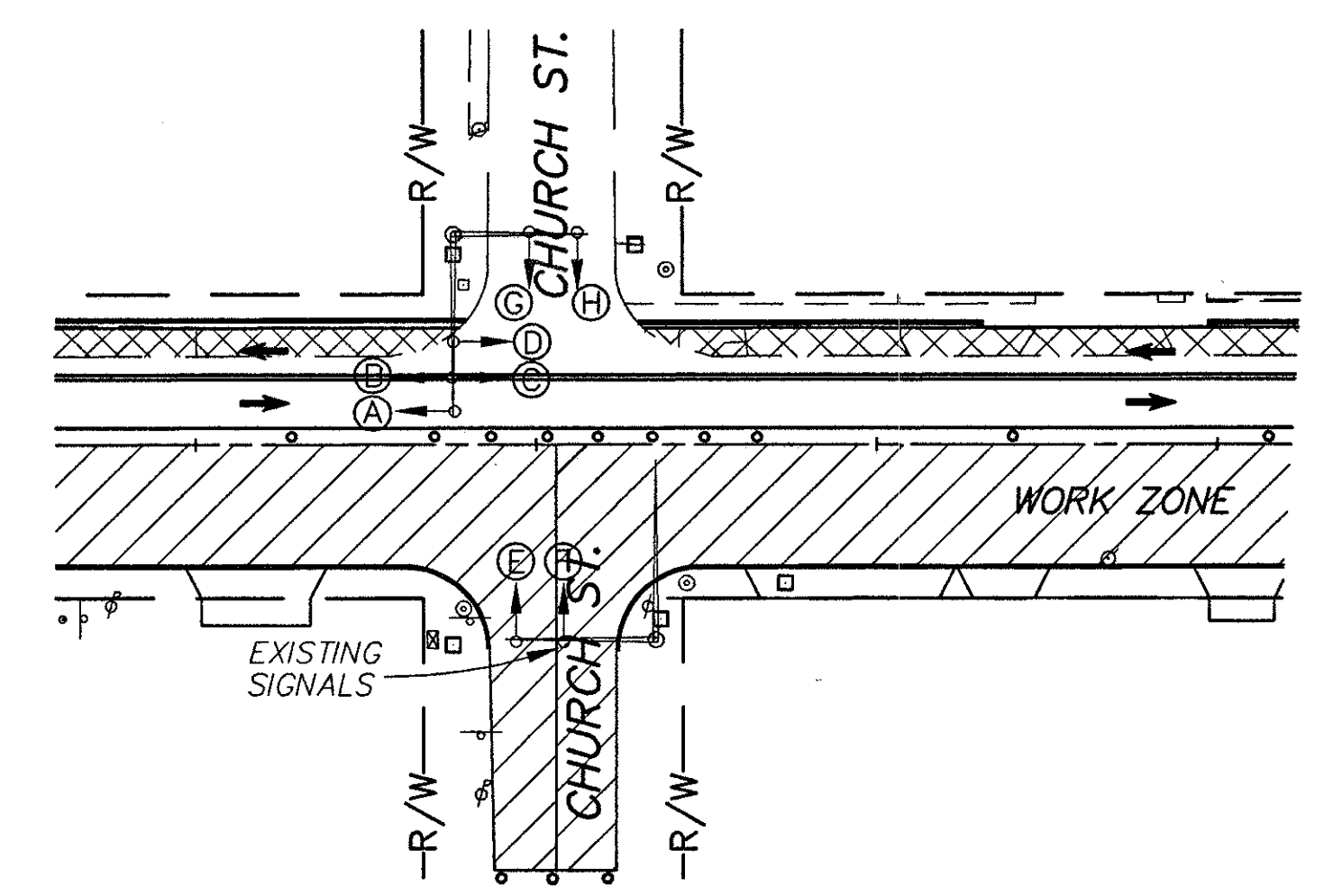
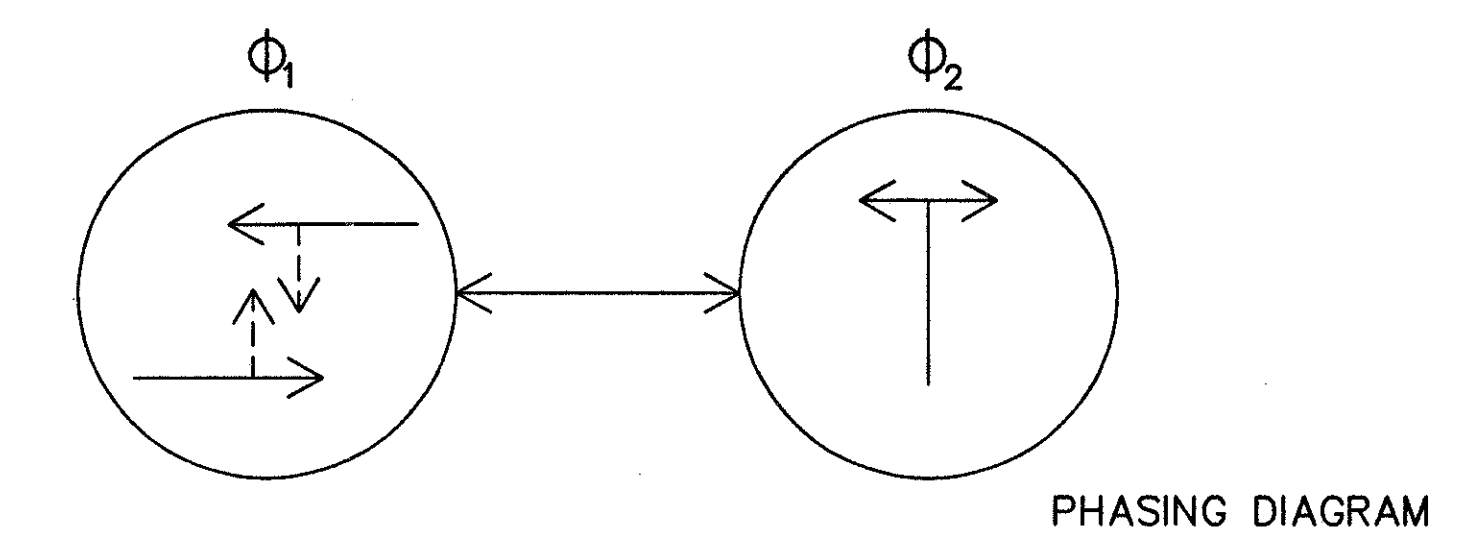
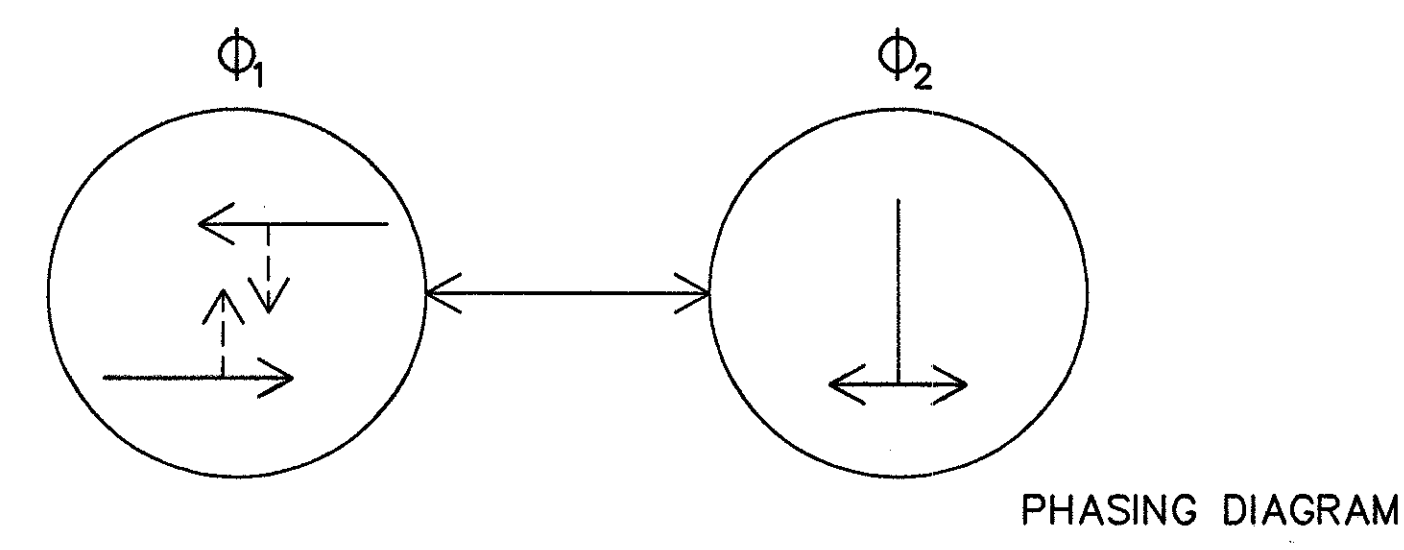


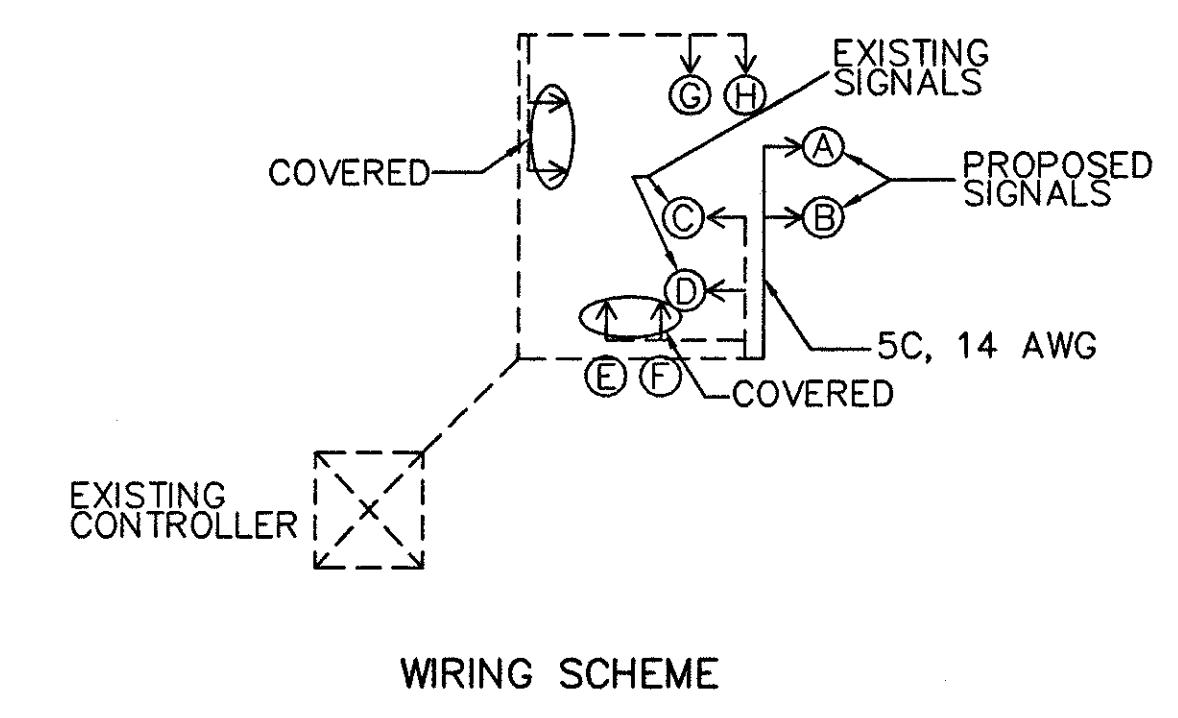
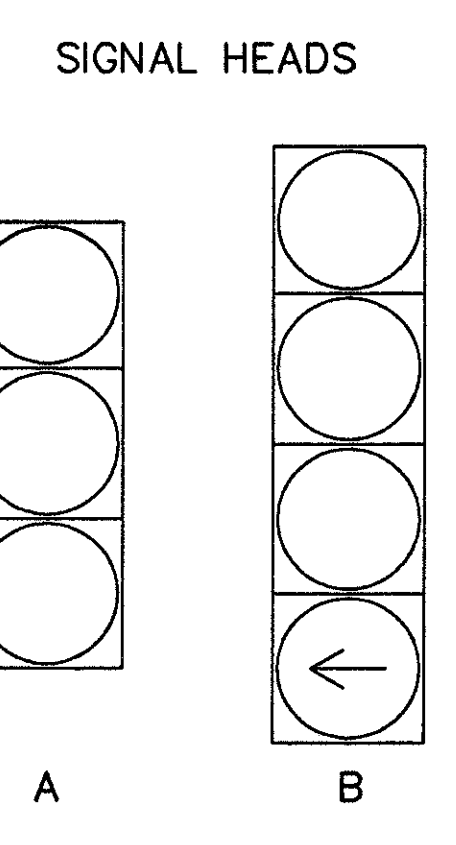
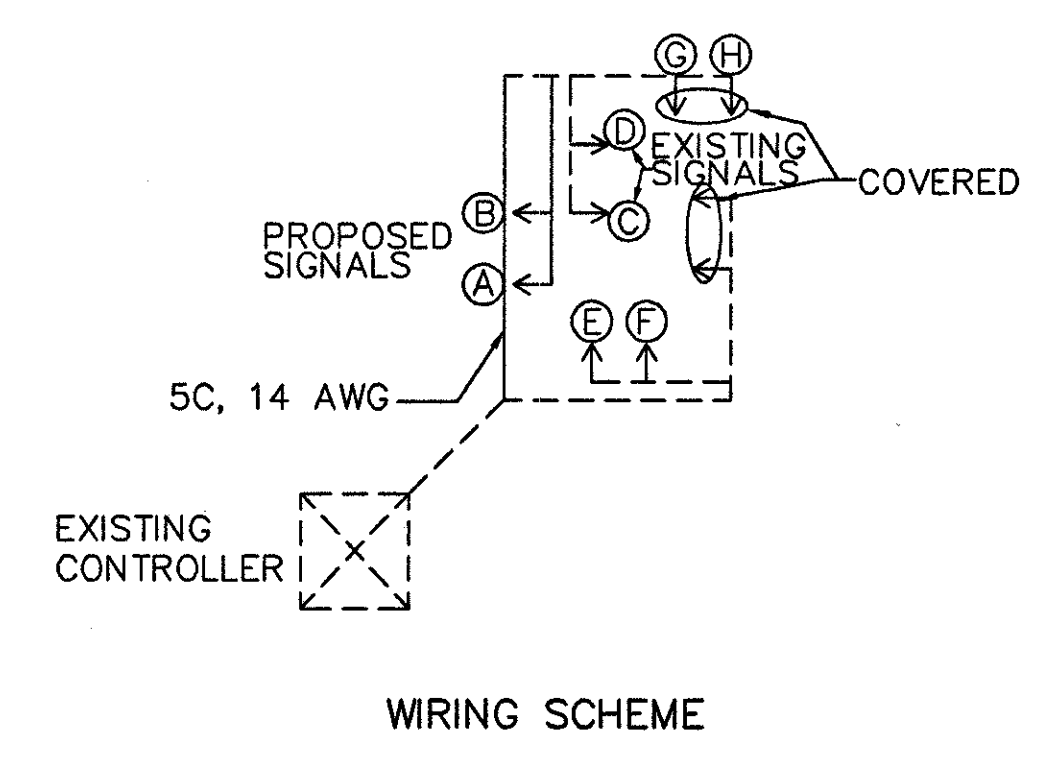
SUMMARY OF TEMPORARY SIGNAL QUANTITIES			
ITEM	TOTAL	UNIT	DESCRIPTION
632	2	EA.	VEHICULAR SIGNAL HEADS, 3 SECTIONS, 300mm LENS, 1 WAY
632	85.5	METER	SIGNAL CABLE, 5 CONDUCTORS, NO 14 AWG.



- NOTES:**
- ALL EXISTING SIGNALS NOT IN USE IN EACH PHASE SHALL BE COVERED IN THE MANNER DESCRIBED IN 632.24
  - INSTALL TWO SIGNALS AND CABLE ON EXISTING MAST ARM
  - REMOVE SIGNAL A AND B FROM PHASE I AND INSTALL THEM ON EXISTING MAST ARM FOR PHASE II
  - POWER SUPPLIED FROM EXISTING CONTROLLER

TIMING CHART

TRAFFIC SIGNAL INTERVAL	Φ <sub>1</sub>	Φ <sub>2</sub>
VEHICLE MAXIMUM	60	15
VEHICLE GREEN	60	15
MINIMUM YELLOW VEHICLE CLEARANCE	3	3
ALL RED VEHICLE CLEARANCE	2	2



TIMING CHART

TRAFFIC SIGNAL INTERVAL	Φ <sub>1</sub>	Φ <sub>2</sub>
VEHICLE MAXIMUM	60	15
VEHICLE GREEN	60	15
MINIMUM YELLOW VEHICLE CLEARANCE	3	3
ALL RED VEHICLE CLEARANCE	2	2