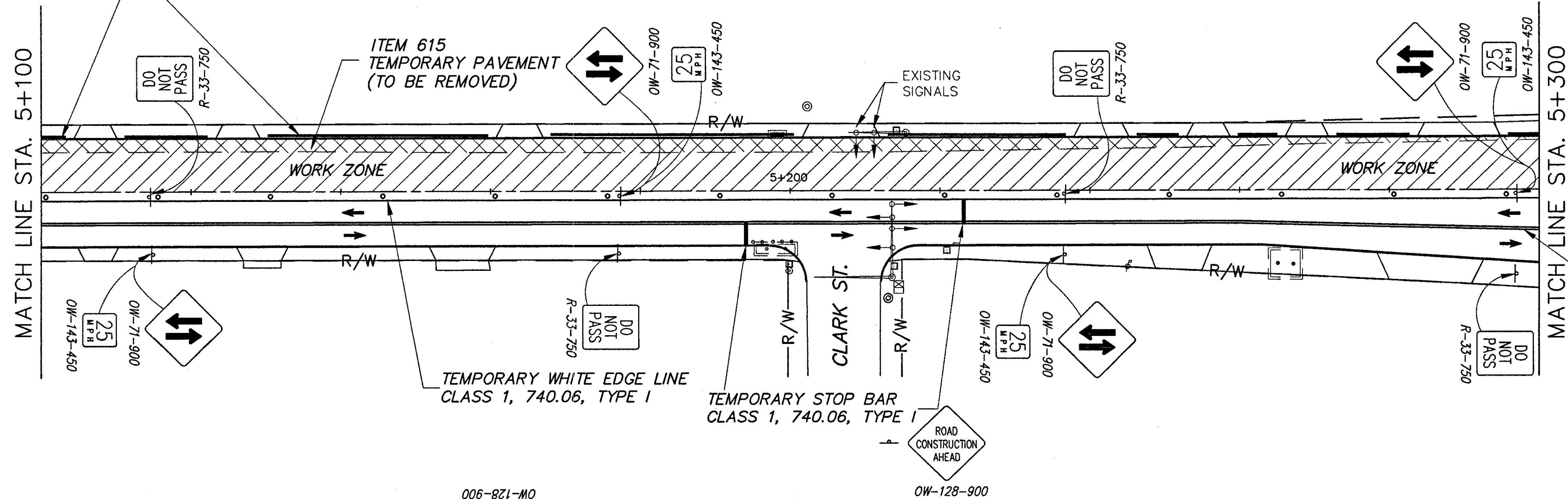
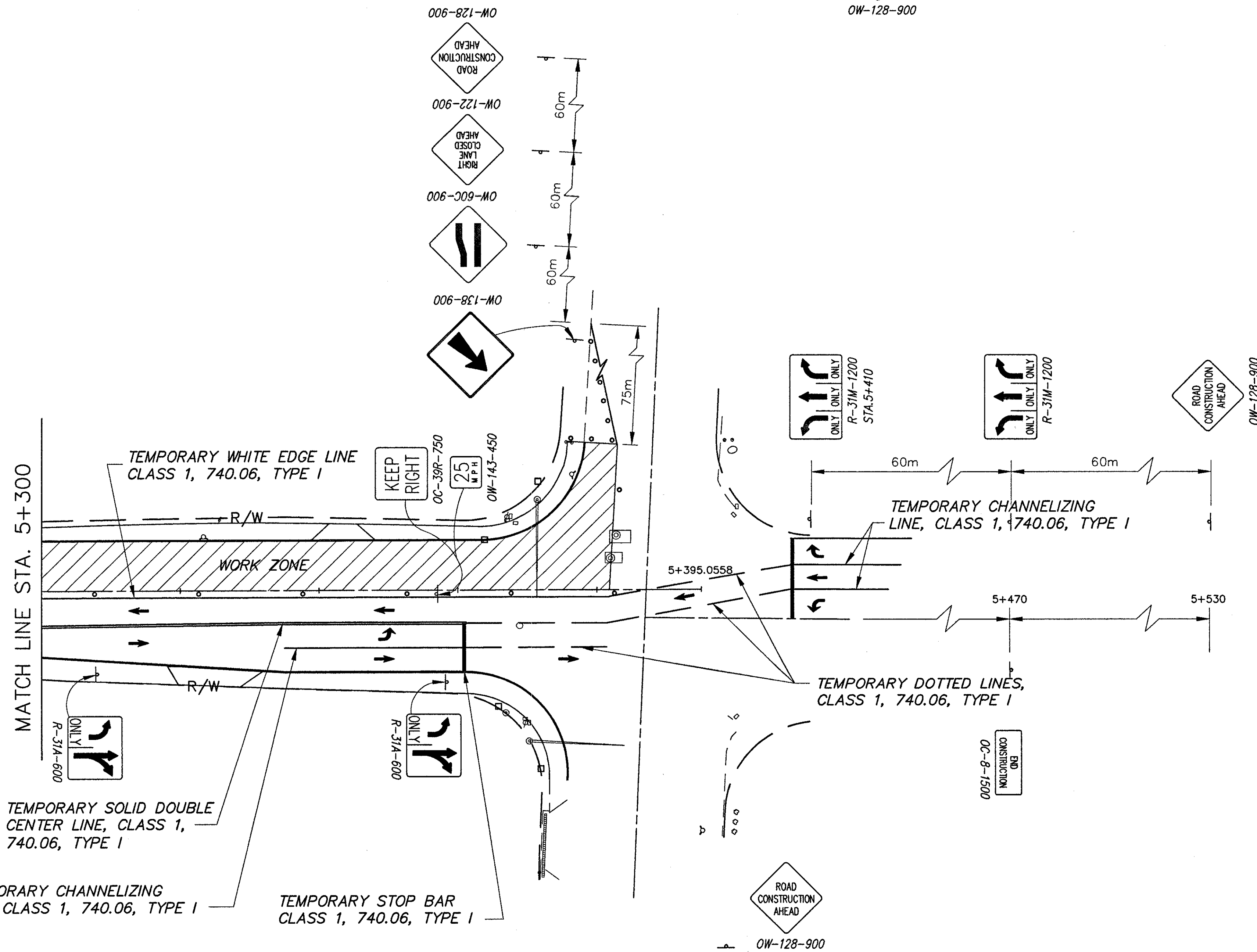


PORTABLE CONCRETE BARRIERS
(TO BE REMOVED)

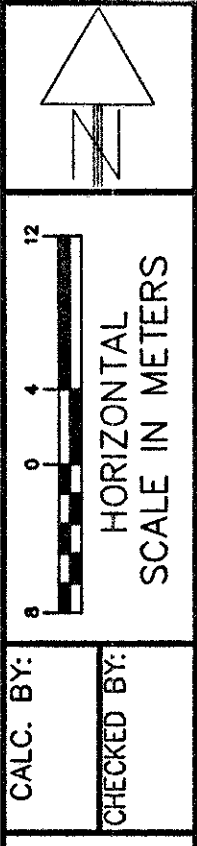


TEMPORARY SOLID DOUBLE
CENTER LINE, CLASS 1,
740.06, TYPE I



NOTES:

- BARRELS SHALL BE SPACED OUT ALONG ROADWAY AT 15m ON CENTER EXCEPT FOR TAPERS AND CLOSED INTERSECTIONS, WHERE THE BARRELS SHALL BE SPACED AT 3m ON CENTER. BARRELS SHALL NOT PROHIBIT ACCESS TO ANY INTERSECTION OR DRIVEWAY NOT UNDER CONSTRUCTION
- EXISTING CONFLICTING SIGNS, SIGNALS AND PAVEMENT MARKING ON VINE STREET SHALL BE COVERED (SIGNS AND SIGNALS) OR REMOVED (PAVEMENT MARKINGS)
- ALL INTERSECTIONS THAT ARE CLOSED DUE TO CONSTRUCTION SHALL HAVE EMERGENCY ACCESS MAINTAINED



MAINTENANCE OF TRAFFIC
SECTION 3 - PHASE 2

LAK-640-2.14

50
214