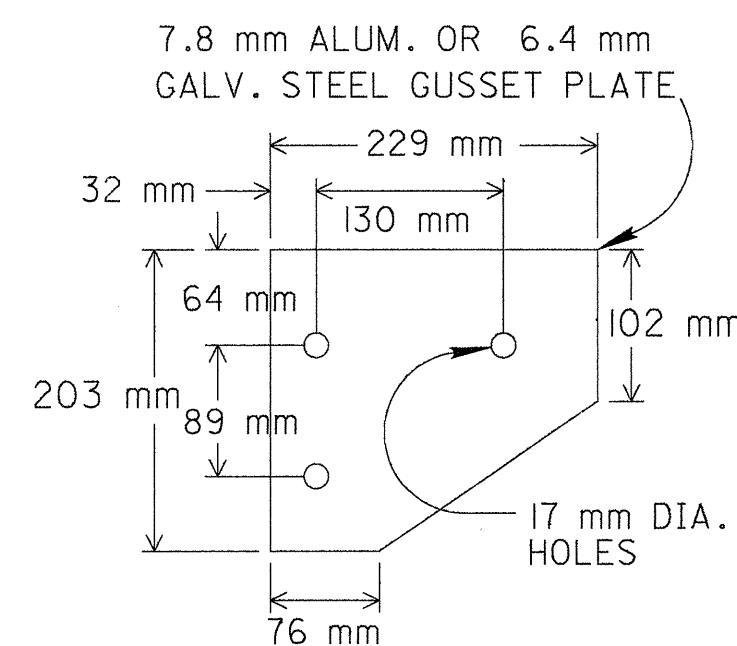
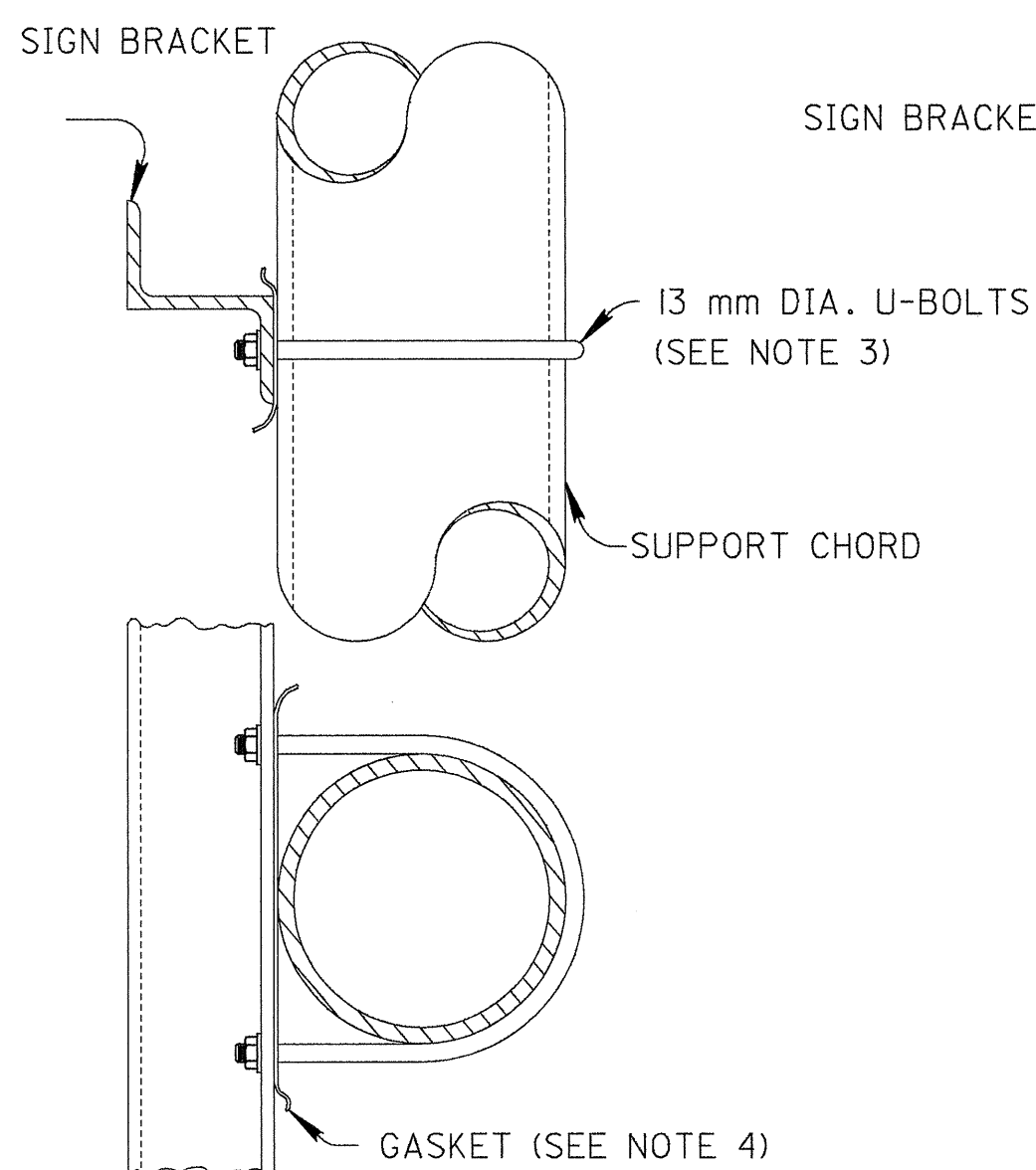


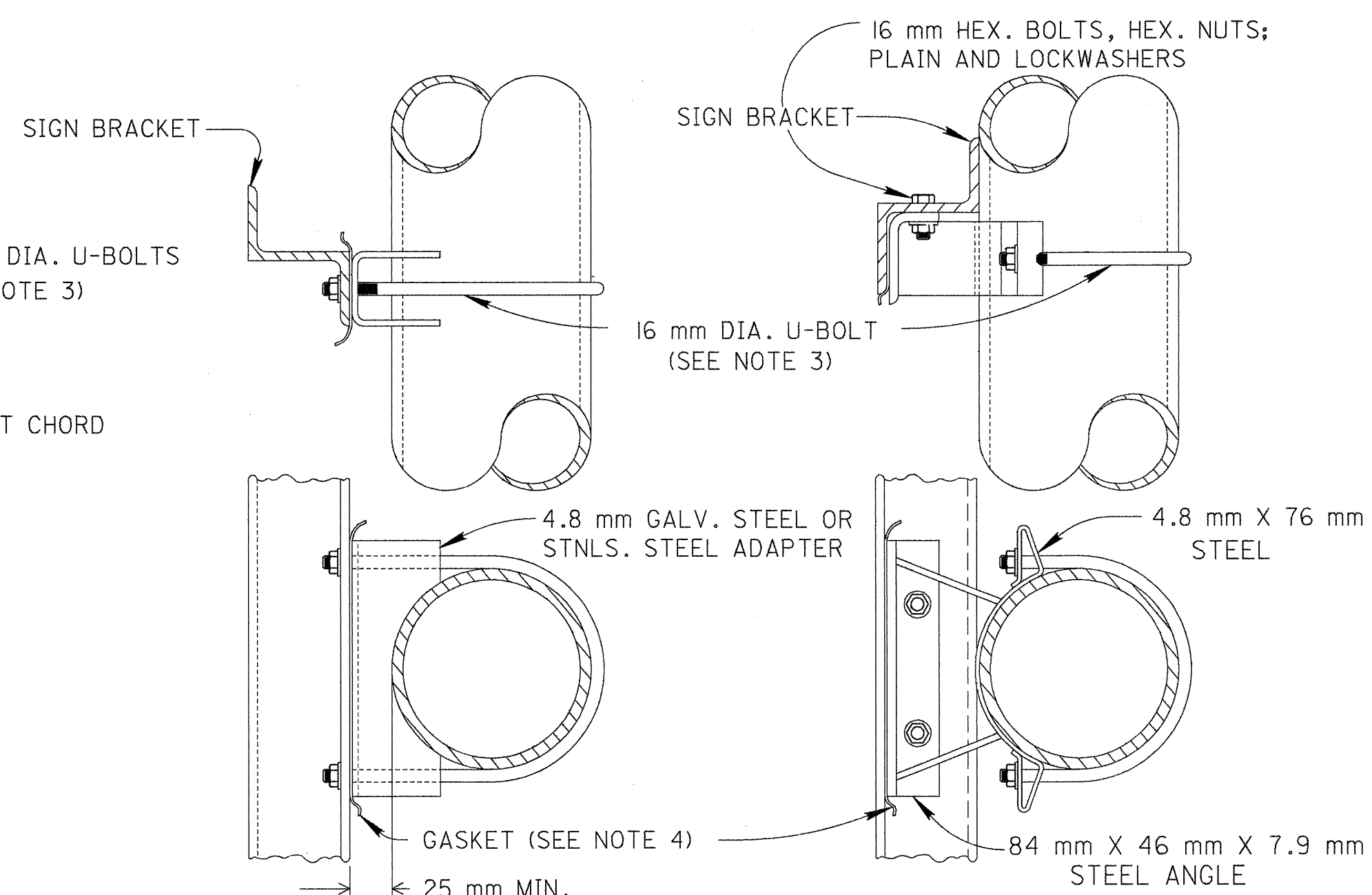
DETAIL C
(SEE NOTE 7)



GUSSET PLATE

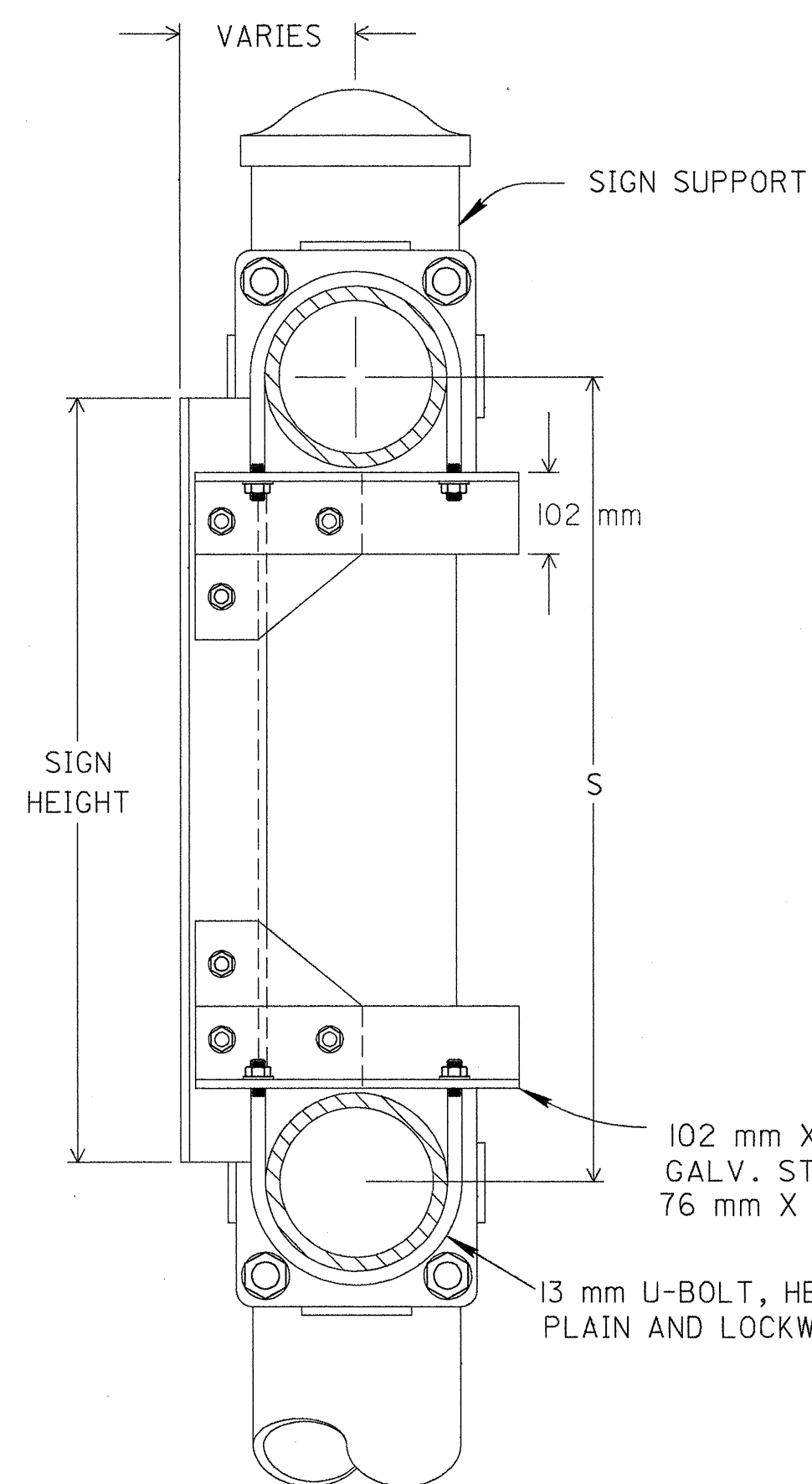


DOUBLE CHORDS

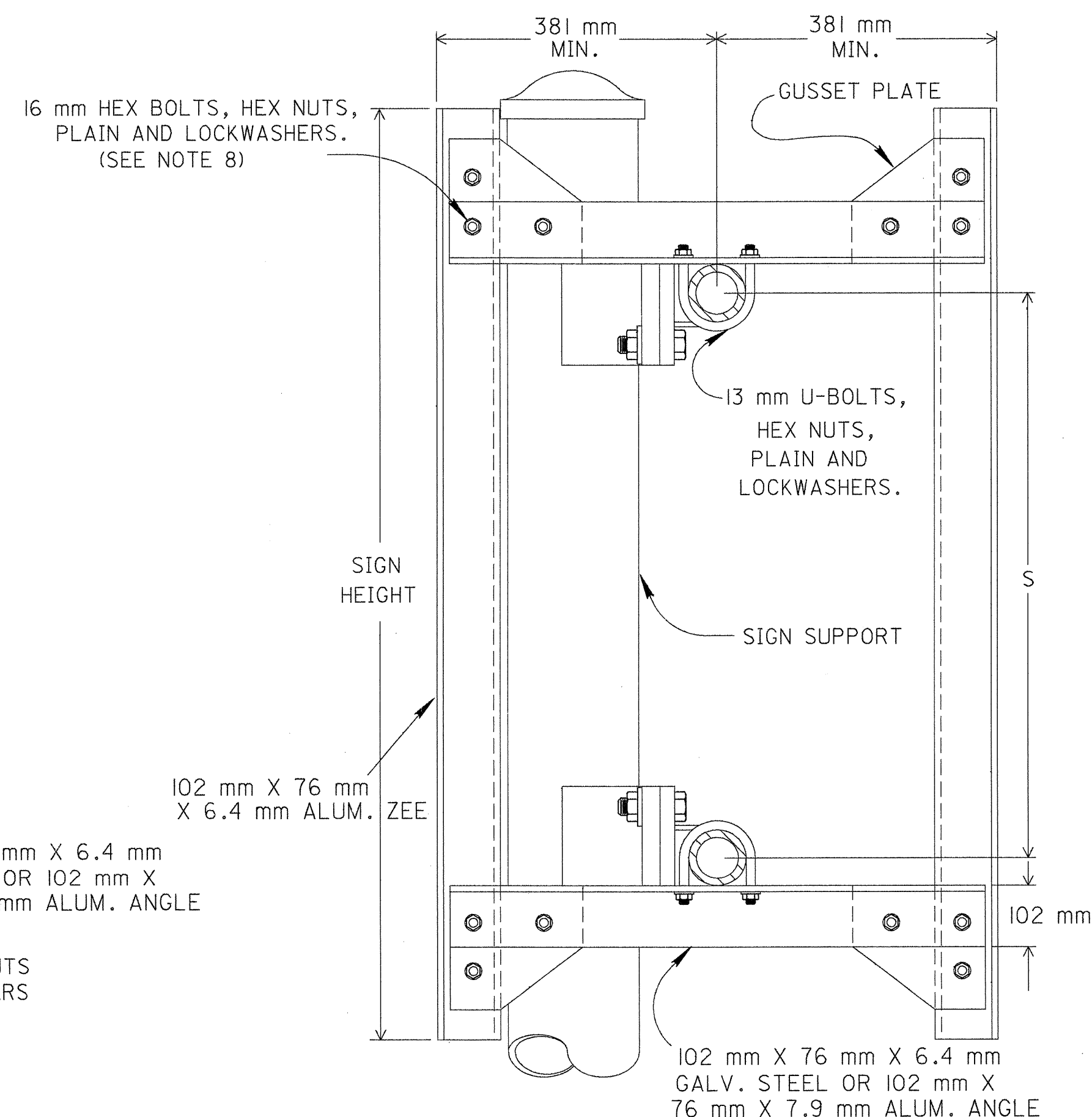


SINGLE ARM

ALTERNATE CLAMP



TYPE A
(SEE NOTE 5)



TYPE B
(SEE NOTE 6)

NOTES

- SIGN BRACKETS SHALL BE A 102 mm X 76 mm X 6.4 mm ALUMINUM ZEE AT 4.23 kg/m.
- INTERMEDIATE SIGN BRACKETS SHALL BE PROVIDED IF THE SIGN EXTENDS MORE THAN 1.2 m ABOVE OR BELOW AN ATTACHMENT POINT.
- U-BOLTS, OTHER BOLTS, NUTS AND WASHERS SHALL BE STAINLESS STEEL FOR USE WITH ALUMINUM CHORDS. WHEN USED WITH GALVANIZED SIGN STRUCTURES THE U-BOLTS ONLY MAY BE GALVANIZED STEEL.
- CONTACT BETWEEN ALUMINUM AND GALVANIZED PARTS SHALL BE PREVENTED WITH A MINIMUM 1.6 mm THICK CHLOROPRENE GASKET OR APPROVED EQUAL.
- TYPE A SHALL BE FOR SUPPORTS WHERE THE SIGN HEIGHT IS LESS THAN 0.3 m GREATER THAN THE ATTACHMENT POINT SPACING.
- TYPE B SHALL BE FOR BACK TO BACK MOUNTED SIGNS.
- DETAIL C - FIXTURE SUPPORT ARM MOUNTING FOR MERCURY VAPOR LIGHTED SIGNS COMPLYING WITH TC-31.21M.
- GUSSET PLATES MAY BE ATTACHED BY BOLTING OR WELDING.

ATTACHMENT POINT SPACING			SIGN BRACKET						
SUPPORT TYPE	DESIGN	S (meter)	L (meter)	NUMBER OF BRACKETS	BRACKET SPACING (millimeters)				
7.2	1	0.7	1.2	2	150	900	150		
	2	0.9	1.5		150	1200	150		
	3	1.2	1.8		150	1500	150		
7.3	1 & 2	0.9	2.1	2	150	1800	150		
	3 & 4	1.2	2.4		250	1900	250		
7.4	1	0.9	2.7	3	400	1900	400		
7.5	2 & 3	1.2	3.0		250	2500	250		
7.6	4	1.5	3.3		400	2500	400		
7.65	6 & 6 ALT.	0.9	3.6	3	150	1650	1650	150	
	8 & 8 ALT.	1.5	3.9		150	1800	1800	150	
9.12	SINGLE ARM		4.2	3	200	1900	1900	200	
9.24	1 THRU 4	1.2	4.5		350	1900	1900	350	
10.48	1 THRU 5	1.2	4.8		200	1900	2500	200	
11.08	6 THRU 8	1.8	5.1	3	350	1900	2500	350	
	SINGLE ARM		5.4		200	2500	2500	200	
12.24	1 THRU 4	1.2	5.7	4	350	2500	2500	350	
12.30	5 THRU 8	1.8	6.0		150	1900	1900	1900	150
	1 THRU 4 ALT.	1.2	6.3		300	1900	1900	1900	300
15.8	5 THRU 12 ALT.	1.8	6.6	4	150	1900	1900	2500	150
	ALL	0.9	6.9		300	1900	1900	2500	300
15.115	ALL	1.5	7.2	4	150	1900	2500	2500	150
16.10	SINGLE ARM		7.5		300	1900	2500	2500	300
			7.8		150	2500	2500	2500	150
			8.1	300	2500	2500	2500	300	

METRIC

BUREAU OF DESIGN SERVICES
DIVISION OF HIGHWAYS
OHIO DEPARTMENT OF TRANSPORTATION

TRAFFIC CONTROL	DATE
SIGN ATTACHMENT ASSEMBLIES	02/01/94
STANDARD CONSTRUCTION DRAWING	
TC-22.20M	
APPROVED <i>Ray Cragg</i> ENGR. OF DESIGN SERVICES	