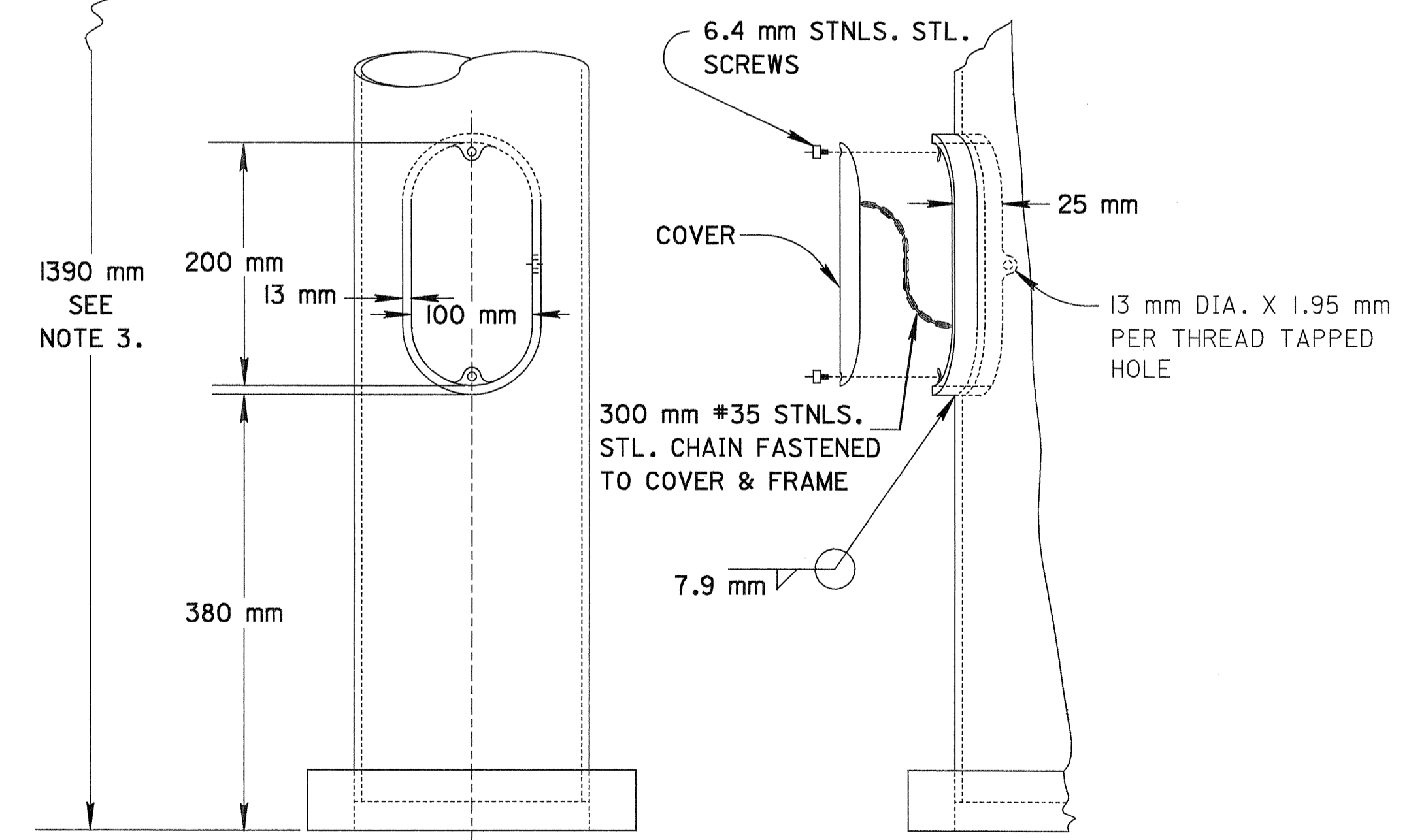
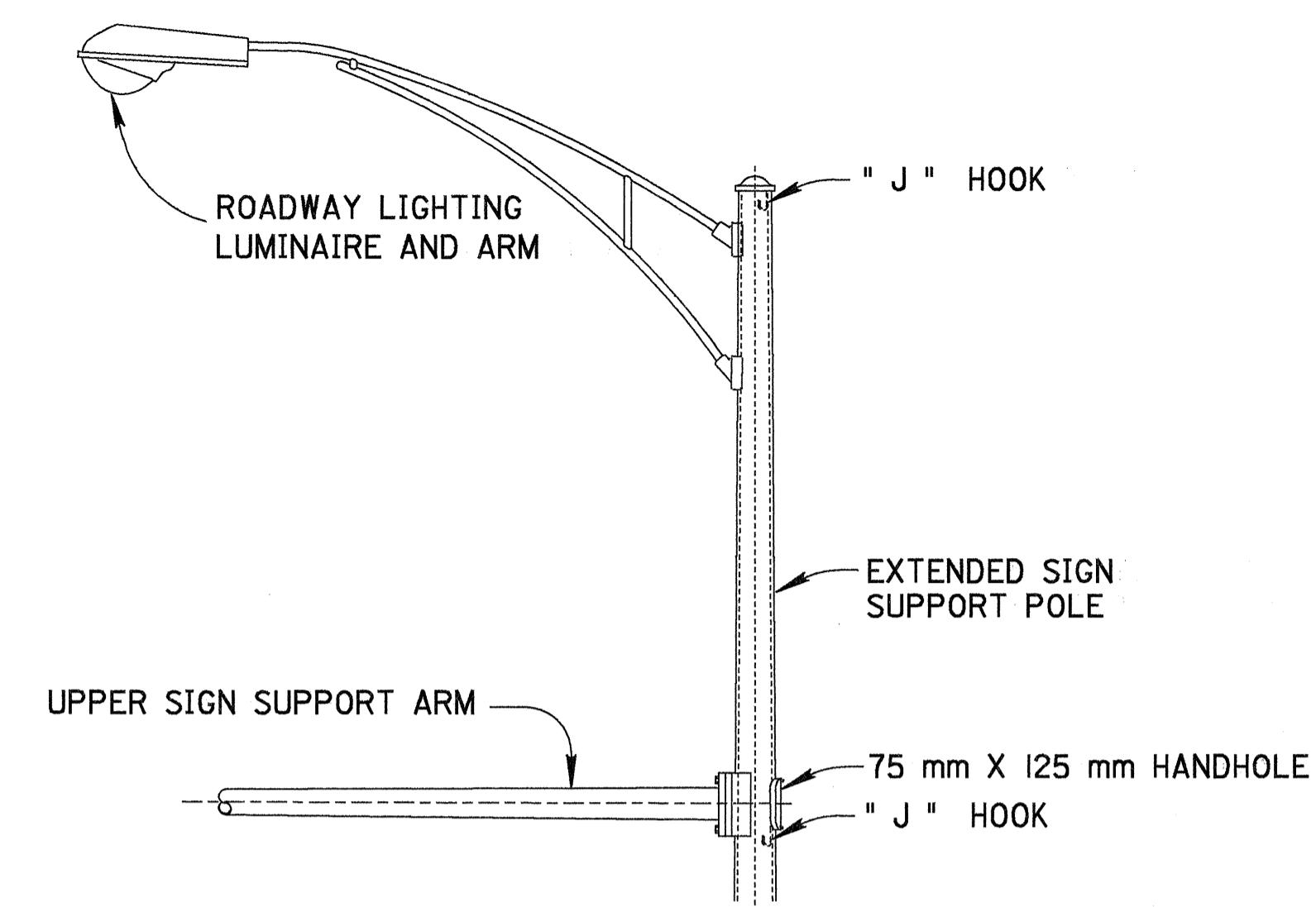


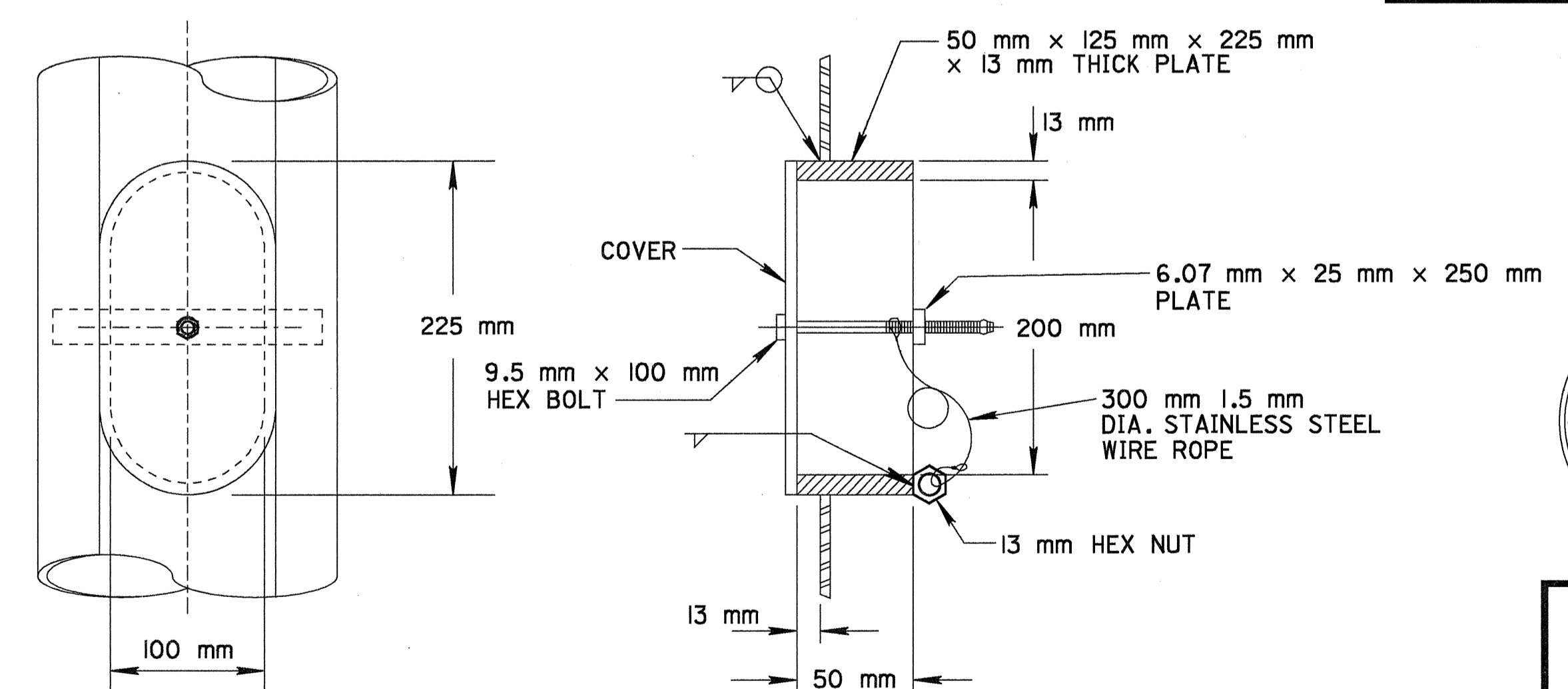
**SWITCH ENCLOSURE BRACKET**



**100 mm X 200 mm HANDHOLE**



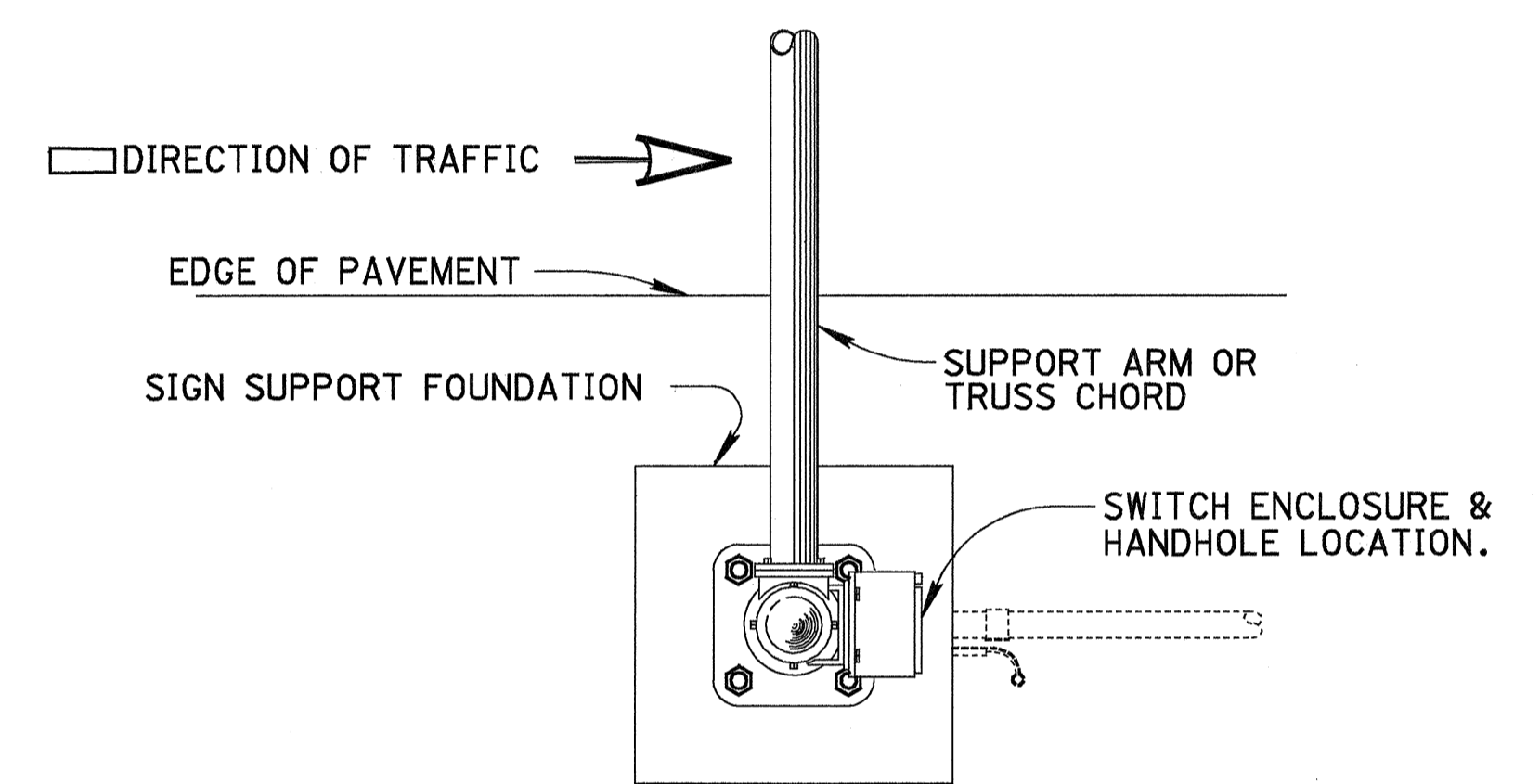
**POLE EXTENSION FOR LIGHTING LUMINAIRE**



**ALTERNATE HANDHOLE COVER ATTACHMENT**

**NOTES**

1. U-BOLTS, NUTS AND WASHERS SHALL BE STAINLESS STEEL FOR USE WITH ALUMINUM TRUSS CHORDS. WHEN USED WITH GALVANIZED CHORDS, THE U-BOLT ONLY MAY BE GALVANIZED STEEL.
2. CONTACT BETWEEN ALUMINUM AND GALVANIZED PARTS SHALL BE PREVENTED WITH A MINIMUM 1.6 mm THICK CHLOROPHENE GASKET OR APPROVED EQUAL. NO GASKET IS REQUIRED BETWEEN STAINLESS STEEL AND ALUMINUM.
3. WHEN ANY SIDEWALK IS WITHIN 1.5 METERS OF THE POLE BASE, THE 1390 mm DIMENSION SHALL BE INCREASED TO 2030 mm.



**SWITCH ENCLOSURE & HANDHOLE ORIENTATION**



**metric units**

OFFICE OF TRAFFIC ENGINEERING DIVISION OF ENGINEERING POLICY OHIO DEPARTMENT OF TRANSPORTATION	
TRAFFIC CONTROL	DATE 02/01/94 03/13/97
MISCELLANEOUS OVERHEAD SIGN SUPPORT DETAILS	
STANDARD CONSTRUCTION DRAWING	TC-22.10M
APPROVED <i>[Signature]</i> ADMINISTRATOR	