

LOT NOS. 9 & 10 CARD TRACT in the GORE  
ORIGINAL WILLOUGHBY TOWNSHIP  
CITY OF EASTLAKE  
(CITY OF WILLOUGHBY)  
LAKE COUNTY



HORIZONTAL  
SCALE IN METERS

FEDERAL  
PROJECT NO.  
14199

STATE  
PROJECT NO.  
126430

RIGHT OF WAY PLAN  
STA. 3+356.217 TO STA. 3+452.601

LAK - 640 - 2.865 (178)

19 / 21

187  
189

E. 360th ST.

E. 362nd ST.

E. 363rd ST.

MATCH LINE STA. 3+356.217  
SEE SHEET NO. 17

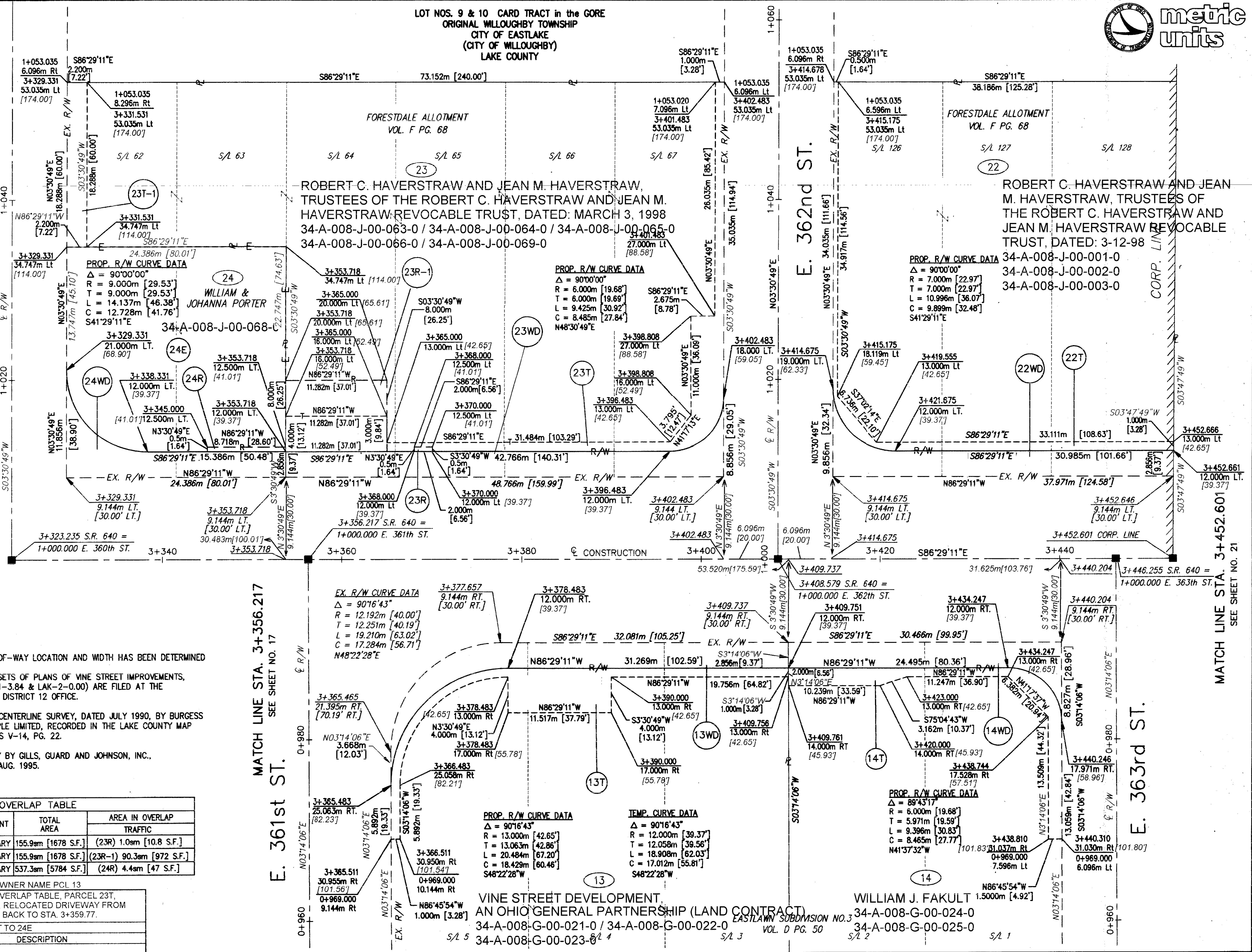
MATCH LINE STA. 3+452.601  
SEE SHEET NO. 21

NOTE:  
EXISTING RIGHT-OF-WAY LOCATION AND WIDTH HAS BEEN DETERMINED FROM:

1. PRIOR SETS OF PLANS OF VINE STREET IMPROVEMENTS, (LAK-91-3.84 & LAK-2-0.00) ARE FILED AT THE O.D.O.T. DISTRICT 12 OFFICE.
2. PRIOR CENTERLINE SURVEY, DATED JULY 1990, BY BURGESS AND NIPLE LIMITED, RECORDED IN THE LAKE COUNTY MAP RECORDS V-14, PG. 22.
3. SURVEY BY GILLS, GUARD AND JOHNSON, INC., DATED AUG. 1995.

OVERLAP TABLE				
PARCEL NO.	EASEMENT	TOTAL AREA	AREA IN OVERLAP	
			TRAFFIC	
23T	TEMPORARY	155.9sm [1678 S.F.]	(23R)	1.0sm [10.8 S.F.]
23T	TEMPORARY	155.9sm [1678 S.F.]	(23R-1)	90.3sm [972 S.F.]
24T	TEMPORARY	537.3sm [5784 S.F.]	(24R)	4.4sm [47 S.F.]

REV.	DATE	DESCRIPTION
3	02/09/2000	UPDATED OWNER NAME PCL 13
2	09/24/99	ADJUSTED OVERLAP TABLE, PARCEL 23T, ADDED 23R-1, RELOCATED DRIVEWAY FROM STA. 3+380.12 BACK TO STA. 3+359.77.
1	6/14/99	CHANGED 24T TO 24E



VINE STREET DEVELOPMENT,  
AN OHIO GENERAL PARTNERSHIP (LAND CONTRACT)  
34-A-008-G-00-021-0 / 34-A-008-G-00-022-0  
34-A-008-G-00-023-0

EASTLAKE SUBDIVISION NO. 3  
VOL. D PG. 50

WILLIAM J. FAKULT  
34-A-008-G-00-024-0  
34-A-008-G-00-025-0