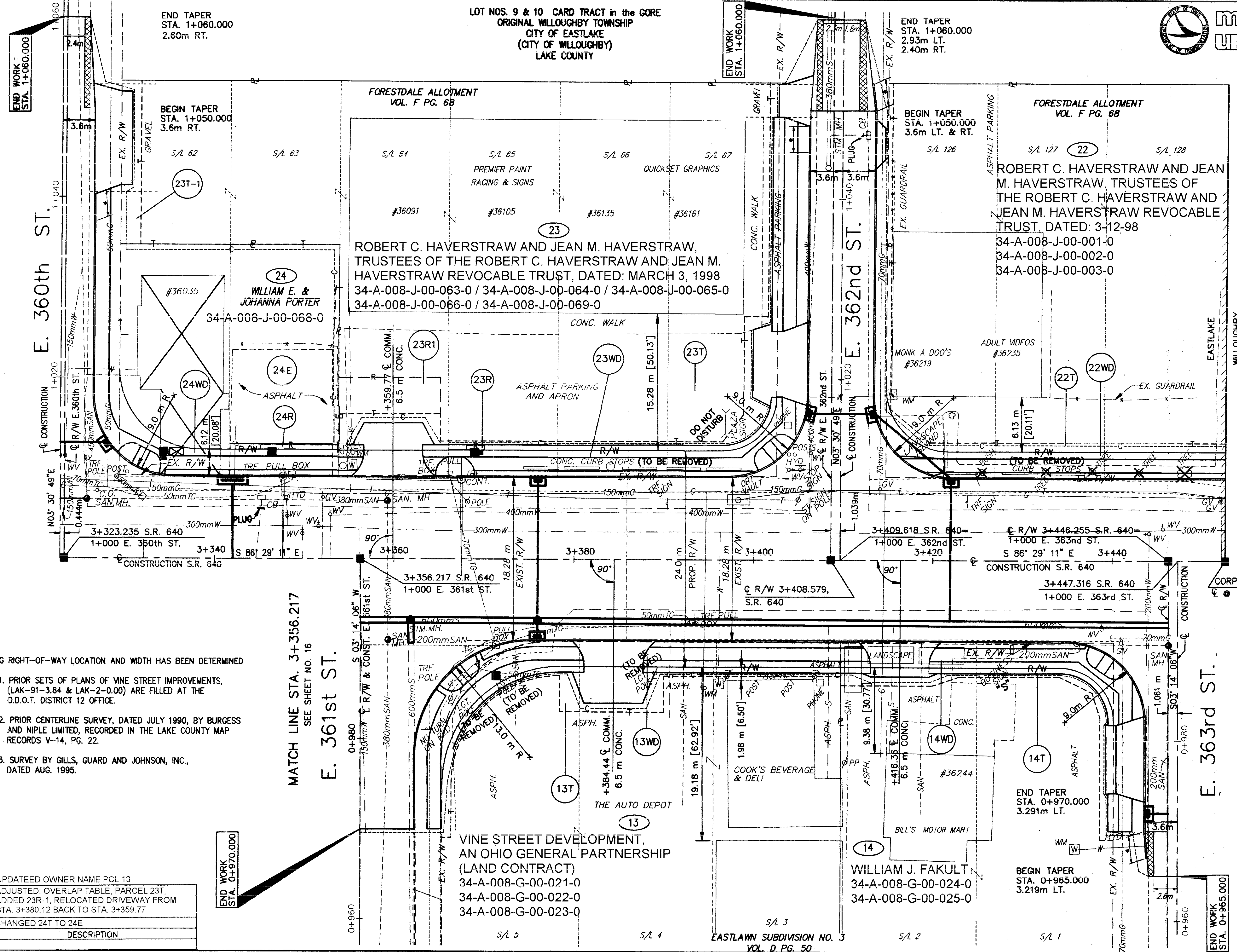


LOT NOS. 9 & 10 CARD TRACT in the GORE ORIGINAL WILLOUGHBY TOWNSHIP CITY OF EASTLAKE (CITY OF WILLOUGHBY) LAKE COUNTY



END TAPER STA. 1+060.000 2.60m RT.

END TAPER STA. 1+060.000 2.93m LT. 2.40m RT.

END WORK STA. 1+060.000

END WORK STA. 1+060.000

END WORK STA. 0+965.000

END WORK STA. 0+970.000

NOTE:

- EXISTING RIGHT-OF-WAY LOCATION AND WIDTH HAS BEEN DETERMINED FROM:
1. PRIOR SETS OF PLANS OF VINE STREET IMPROVEMENTS, (LAK-91-3.84 & LAK-2-0.00) ARE FILED AT THE O.D.O.T. DISTRICT 12 OFFICE.
 2. PRIOR CENTERLINE SURVEY, DATED JULY 1990, BY BURGESS AND NIPLE LIMITED, RECORDED IN THE LAKE COUNTY MAP RECORDS V-14, PG. 22.
 3. SURVEY BY GILLS, GUARD AND JOHNSON, INC., DATED AUG. 1995.

REV.	DATE	DESCRIPTION
3	10/27/2000	UPDATED OWNER NAME PCL 13
2	09/24/99	ADJUSTED: OVERLAP TABLE, PARCEL 23T, ADDED 23R-1, RELOCATED DRIVEWAY FROM STA. 3+380.12 BACK TO STA. 3+359.77.
1	6/14/99	CHANGED 24T TO 24E

H:\1998\98208\ROW\RWPL6.DWG