

HORIZONTAL SCALE IN METERS

FEDERAL PROJECT NO. 14199

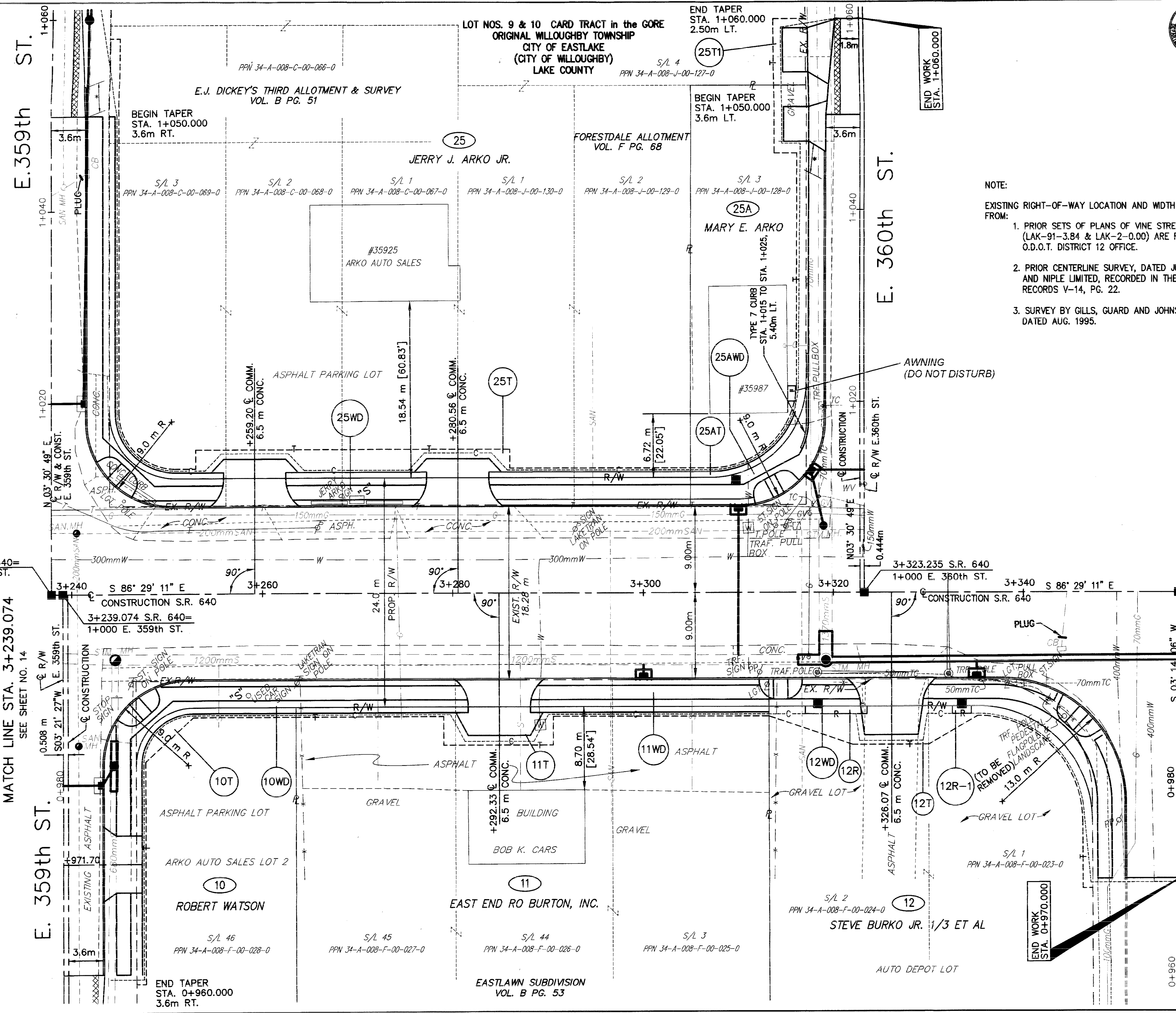
STATE PROJECT NO. 126430

RIGHT OF WAY PLAN STA. 3+239.074 TO STA. 3+356.217

LAK - 640 - 2865 (178)

16/21

184
189



- NOTE:
- EXISTING RIGHT-OF-WAY LOCATION AND WIDTH HAS BEEN DETERMINED FROM:
1. PRIOR SETS OF PLANS OF VINE STREET IMPROVEMENTS, (LAK-91-3.84 & LAK-2-0.00) ARE FILED AT THE O.D.O.T. DISTRICT 12 OFFICE.
 2. PRIOR CENTERLINE SURVEY, DATED JULY 1990, BY BURGESS AND NIPLE LIMITED, RECORDED IN THE LAKE COUNTY MAP RECORDS V-14, PG. 22.
 3. SURVEY BY GILLS, GUARD AND JOHNSON, INC., DATED AUG. 1995.

MATCH LINE STA. 3+239.074
SEE SHEET NO. 14

MATCH LINE STA. 3+356.217
SEE SHEET NO. 18

E. 359th ST.

E. 360th ST.

E. 361st ST.

BEGIN TAPER
STA. 1+050.000
3.6m RT.

END TAPER
STA. 1+060.000
2.50m LT.

END TAPER
STA. 0+960.000
3.6m RT.

END WORK
STA. 0+970.000

END WORK
STA. 1+060.000

LOT NOS. 9 & 10 CARD TRACT in the GORE
ORIGINAL WILLOUGHBY TOWNSHIP
CITY OF EASTLAKE
(CITY OF WILLOUGHBY)
LAKE COUNTY

E.J. DICKEY'S THIRD ALLOTMENT & SURVEY
VOL. B PG. 51

FORESTDALE ALLOTMENT
VOL. F PG. 68

JERRY J. ARKO JR.

MARY E. ARKO

#35925
ARKO AUTO SALES

#35987

EAST END RO BURTON, INC.

STEVE BURKO JR. 1/3 ET AL

ROBERT WATSON

EASTLAWN SUBDIVISION
VOL. B PG. 53

AUTO DEPOT LOT

ARKO AUTO SALES LOT 2

BOB K. CARS

(TO BE FLAGPOLE
REMOVED) LANDSCAPE

AWNING
(DO NOT DISTURB)

N 03° 30' 49" E

N 03° 30' 49" E

3+237.891 S.R. 640=

3+323.235 S.R. 640

3+356.217 S.R. 640

3+240

3+260

3+280

3+300

3+320

3+340

3+239.074 S.R. 640=

CONSTRUCTION S.R. 640

1+000 E. 359th ST.

CONSTRUCTION S.R. 640

1+000 E. 360th ST.

CONSTRUCTION S.R. 640

1+000 E. 361st ST.

971.70

10T

10WD

11T

11WD

12WD

12R

12R-1

12

10

11

12

25

25A

25T

25WD

25AWD

25AT

3.6m

1+020

1+040

1+060

1+020

1+040

1+060

0+980

0+980

0+980

1+020

1+040

1+060

300mmW

300mmW

300mmW

300mmW

300mmW

1200mmS

1200mmS

1200mmS

1200mmS

1200mmS

150mmG

150mmG

150mmG

150mmG

150mmG

200mmSAN

200mmSAN

200mmSAN

200mmSAN

200mmSAN

70mmTC

70mmTC

70mmTC

70mmTC

70mmTC

400mmW

400mmW

400mmW

400mmW

400mmW

70mmC

70mmC

70mmC

70mmC

70mmC

150mmG

150mmG

150mmG

150mmG

150mmG

300mmW

300mmW

300mmW

300mmW

300mmW

150mmG

150mmG

150mmG

150mmG

150mmG

200mmSAN

200mmSAN

200mmSAN

200mmSAN

200mmSAN

70mmTC

70mmTC

70mmTC

70mmTC

70mmTC

400mmW

400mmW

400mmW

400mmW

400mmW

150mmG

150mmG

150mmG

150mmG

150mmG

300mmW

300mmW

300mmW

300mmW

300mmW

150mmG

150mmG

150mmG

150mmG

150mmG

200mmSAN

200mmSAN

200mmSAN

200mmSAN

200mmSAN

70mmTC

70mmTC

70mmTC

70mmTC

70mmTC

400mmW

400mmW

400mmW

400mmW

400mmW

150mmG

150mmG

150mmG

150mmG

150mmG

300mmW

300mmW

300mmW

300mmW

300mmW

150mmG

150mmG

150mmG

150mmG

150mmG

200mmSAN

200mmSAN

200mmSAN

200mmSAN

200mmSAN

70mmTC

70mmTC

70mmTC

70mmTC

70mmTC

400mmW

400mmW

400mmW

400mmW

400mmW

150mmG

150mmG

150mmG

150mmG

150mmG

300mmW

300mmW

300mmW

300mmW

300mmW

150mmG

150mmG

150mmG

150mmG

150mmG

200mmSAN

200mmSAN

200mmSAN

200mmSAN

200mmSAN

70mmTC

70mmTC

70mmTC

70mmTC

70mmTC

400mmW

400mmW

400mmW

400mmW

400mmW

150mmG

150mmG

150mmG

150mmG

150mmG

300mmW

300mmW

300mmW

300mmW

300mmW

150mmG

150mmG

150mmG

150mmG

150mmG

200mmSAN

200mmSAN

200mmSAN

200mmSAN

200mmSAN

70mmTC

70mmTC

70mmTC

70mmTC

70mmTC

400mmW

400mmW

400mmW

400mmW

400mmW

150mmG

150mmG

150mmG</