

FEDERAL PROJECT NO. 14199

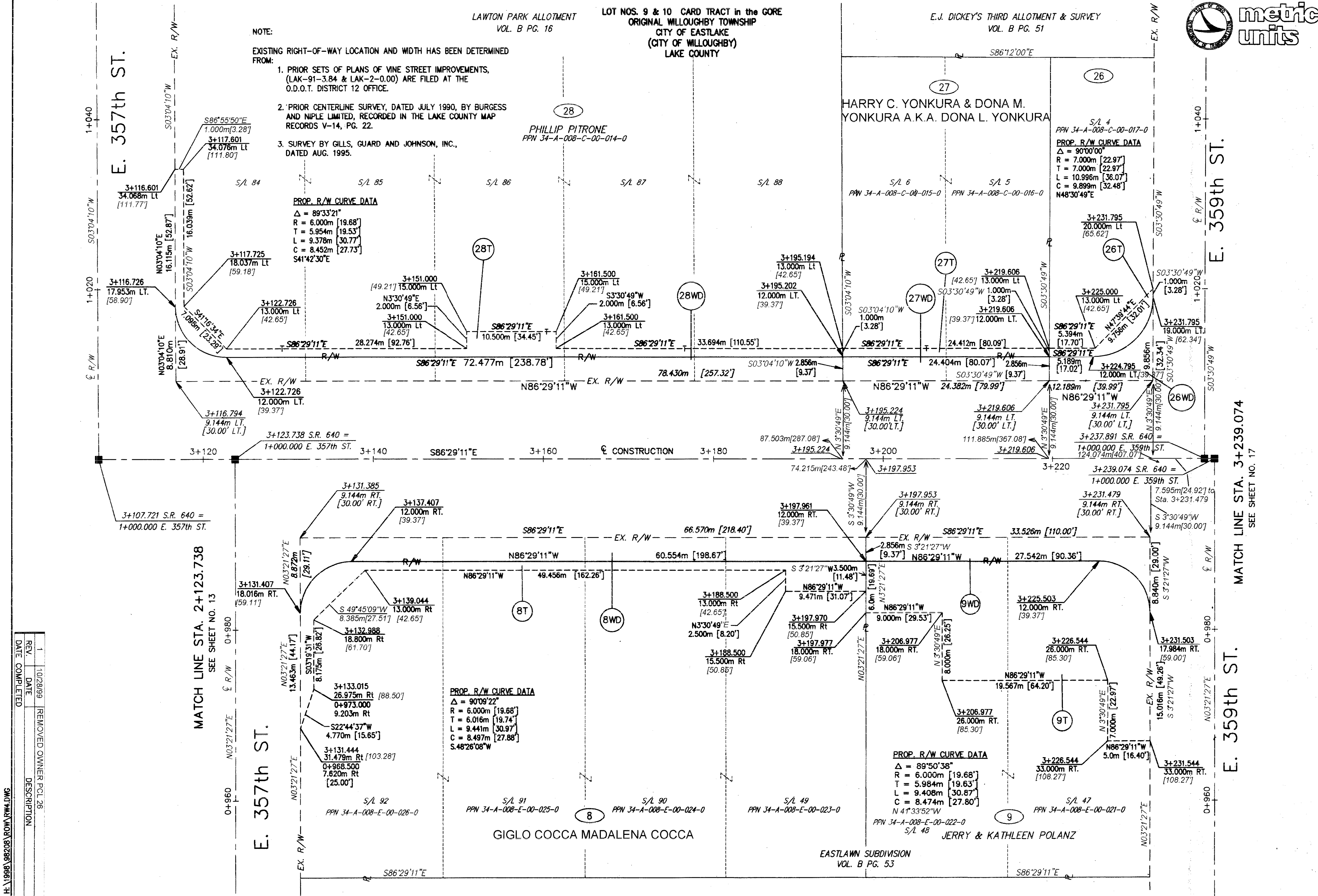
STATE PROJECT NO. 126430

RIGHT OF WAY PLAN
STA. 3+123.738 TO STA. 3+239.074

LAK - 640 - 2865 (178)

15 / 21

183
189



NOTE:
EXISTING RIGHT-OF-WAY LOCATION AND WIDTH HAS BEEN DETERMINED FROM:
1. PRIOR SETS OF PLANS OF VINE STREET IMPROVEMENTS, (LAK-91-3.84 & LAK-2-0.00) ARE FILED AT THE O.D.O.T. DISTRICT 12 OFFICE.
2. PRIOR CENTERLINE SURVEY, DATED JULY 1990, BY BURGESS AND NIPLE LIMITED, RECORDED IN THE LAKE COUNTY MAP RECORDS V-14, PG. 22.
3. SURVEY BY GILLS, GUARD AND JOHNSON, INC., DATED AUG. 1995.

E. 357th ST.
EX. R/W
S03°04'10"W
1+040
1+020
EX. R/W

E. 359th ST.
EX. R/W
S03°30'49"W
1+040
1+020
EX. R/W

MATCH LINE STA. 2+123.738
SEE SHEET NO. 13

MATCH LINE STA. 3+239.074
SEE SHEET NO. 17

REV.	DATE	DESCRIPTION
1	10/28/99	REMOVED OWNER POL 28
DATE COMPLETED		

H:\1998\98208\ROW\RW4.DWG