

H:\1998\98208\ROW\RWFL4.DWG

| REV. | DATE | DESCRIPTION |
|------|----------|----------------------|
| 1 | 10/28/99 | REMOVED OWNER POL 26 |

END WORK STA. 1+040.000

END WORK STA. 0+964.400

MATCH LINE STA. 3+123.738 SEE SHEET NO. 12

E. 357th ST.

E. 357th ST.

E. 359th ST.

E. 359th ST.

MATCH LINE STA. 3+239.074 SEE SHEET NO. 16

3+239.074 S.R. 640= 1+000 E. 359th ST.

3+237.891 S.R. 640= 1+000 E. 359th ST.

3+107.721 S.R. 640 1+000 E. 357th ST.

- NOTE:
EXISTING RIGHT-OF-WAY LOCATION AND WIDTH HAS BEEN DETERMINED FROM:
1. PRIOR SETS OF PLANS OF VINE STREET IMPROVEMENTS, (LAK-91-3.84 & LAK-2-0.00) ARE FILED AT THE O.D.O.T. DISTRICT 12 OFFICE.
 2. PRIOR CENTERLINE SURVEY, DATED JULY 1990, BY BURGESS AND NIPLE LIMITED, RECORDED IN THE LAKE COUNTY MAP RECORDS V-14, PG. 22.
 3. SURVEY BY GILLS, GUARD AND JOHNSON, INC., DATED AUG. 1995.

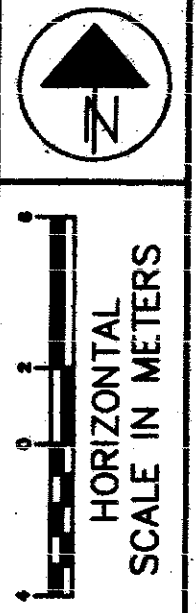
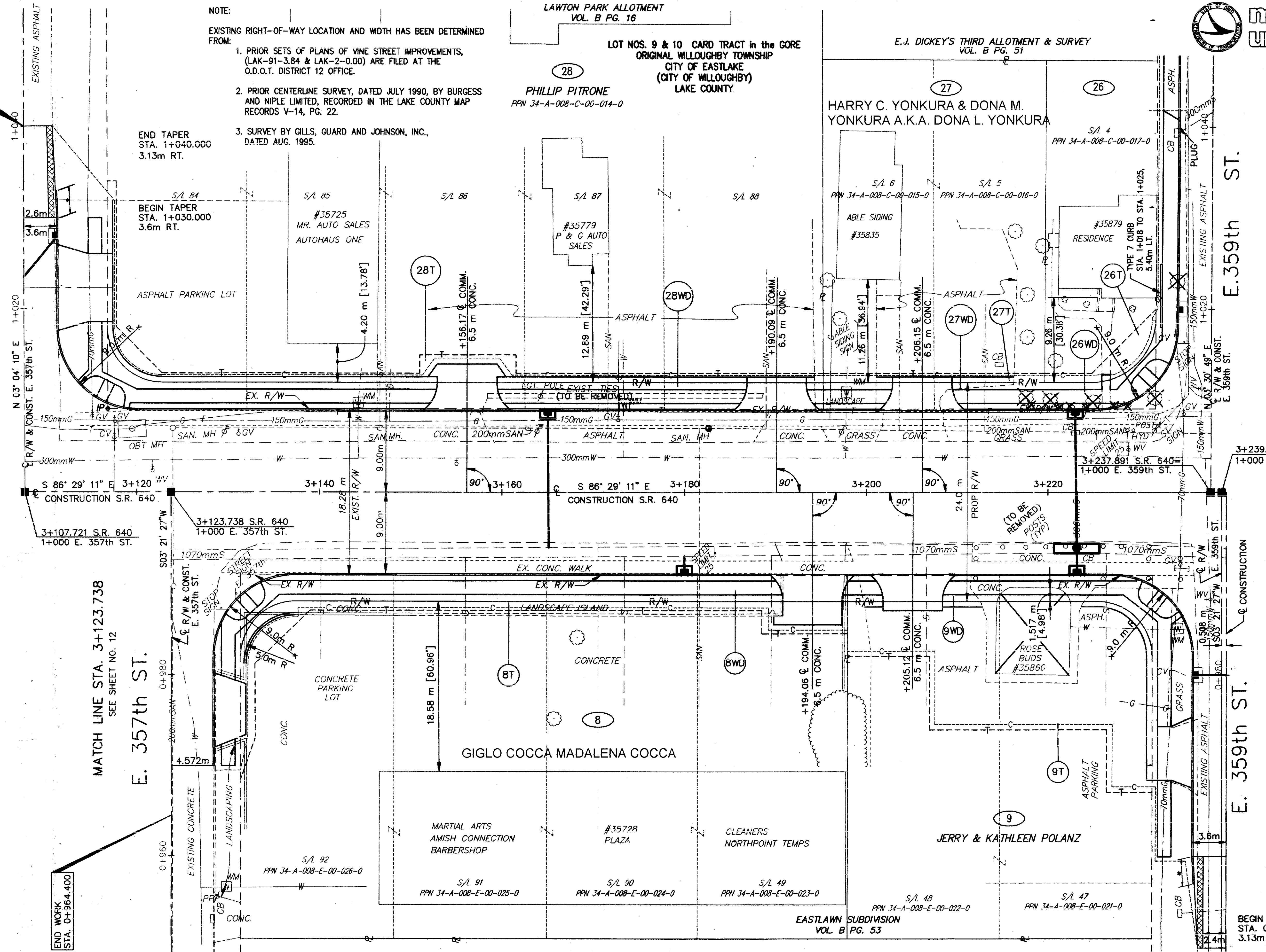
LAWTON PARK ALLOTMENT VOL. B PG. 16

LOT NOS. 9 & 10 CARD TRACT in the GORE ORIGINAL WILLOUGHBY TOWNSHIP CITY OF EASTLAKE (CITY OF WILLOUGHBY) LAKE COUNTY.

E.J. DICKEY'S THIRD ALLOTMENT & SURVEY VOL. B PG. 51

PHILLIP PITRONE PPN 34-A-008-C-00-014-0

HARRY C. YONKURA & DONA M. YONKURA A.K.A. DONA L. YONKURA



FEDERAL PROJECT NO. 14199

STATE PROJECT NO. 126430

RIGHT OF WAY PLAN STA. 3+123.738 TO STA. 3+239.074

LAK - 640 - 2865 (178)

14 / 21

182 189