

HORIZONTAL SCALE IN METERS

FEDERAL PROJECT NO. 14199

STATE PROJECT NO. 126430

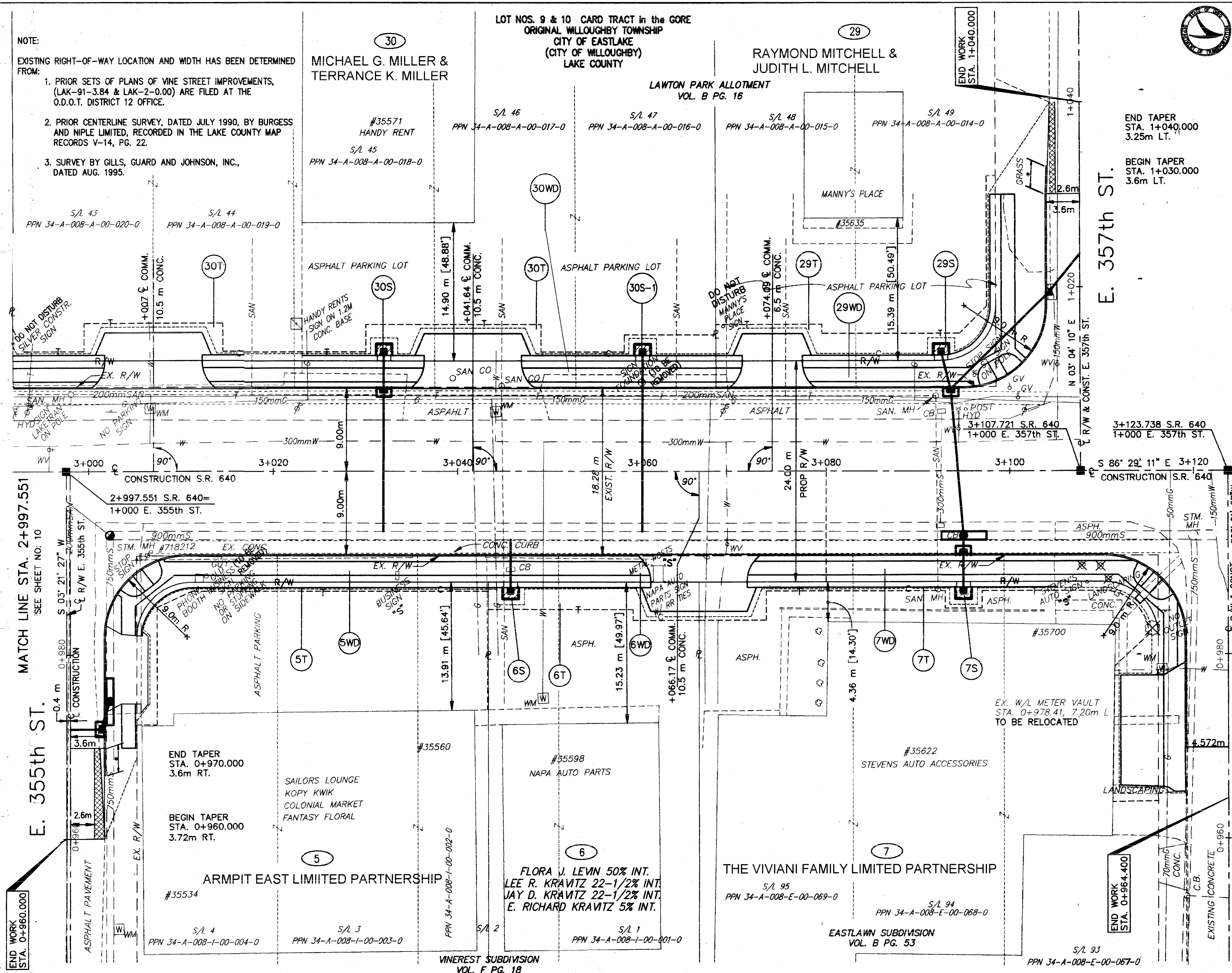
RIGHT OF WAY PLAN
STA. 2+997.551 TO STA. 3+123.738

LAK - 640 - 2865 (178)

12/21
180
189

NOTE:

- EXISTING RIGHT-OF-WAY LOCATION AND WIDTH HAS BEEN DETERMINED FROM:
1. PRIOR SETS OF PLANS OF VINE STREET IMPROVEMENTS, (LAK-91-3.84 & LAK-2-0.00) ARE FILED AT THE O.D.O.T. DISTRICT 12 OFFICE.
 2. PRIOR CENTERLINE SURVEY, DATED JULY 1990, BY BURGESS AND NIPLE LIMITED, RECORDED IN THE LAKE COUNTY MAP RECORDS V-14, PG. 22.
 3. SURVEY BY GILLS, GUARD AND JOHNSON, INC., DATED AUG. 1995.



MATCH LINE STA. 2+997.551
SEE SHEET NO. 10

E. 355th St.

E. 357th St.

MATCH LINE STA. 3+123.738
SEE SHEET NO. 14

END WORK STA. 0+960.000

END WORK STA. 0+964.400

END TAPER STA. 1+040.000
3.25m LT.

BEGIN TAPER STA. 1+030.000
3.6m LT.

REV.	DATE	DESCRIPTION
3	10/01	ALONG THE WESTERLY PROPERTY LINE PCL OF 4 ALONG E 355 ST. PCL 5T. DARKENED LINES FOR PROPOSED DRIVE CONSTRUCTION
2	09/24/99	ADJUSTED PARCEL 301. ADDED DRIVEWAY
1	6/14/99	UPDATED OWNER PCL 5.7. 29. 30

END WORK STA. 0+960.000