



HORIZONTAL SCALE IN METERS

FEDERAL PROJECT NO. 14199

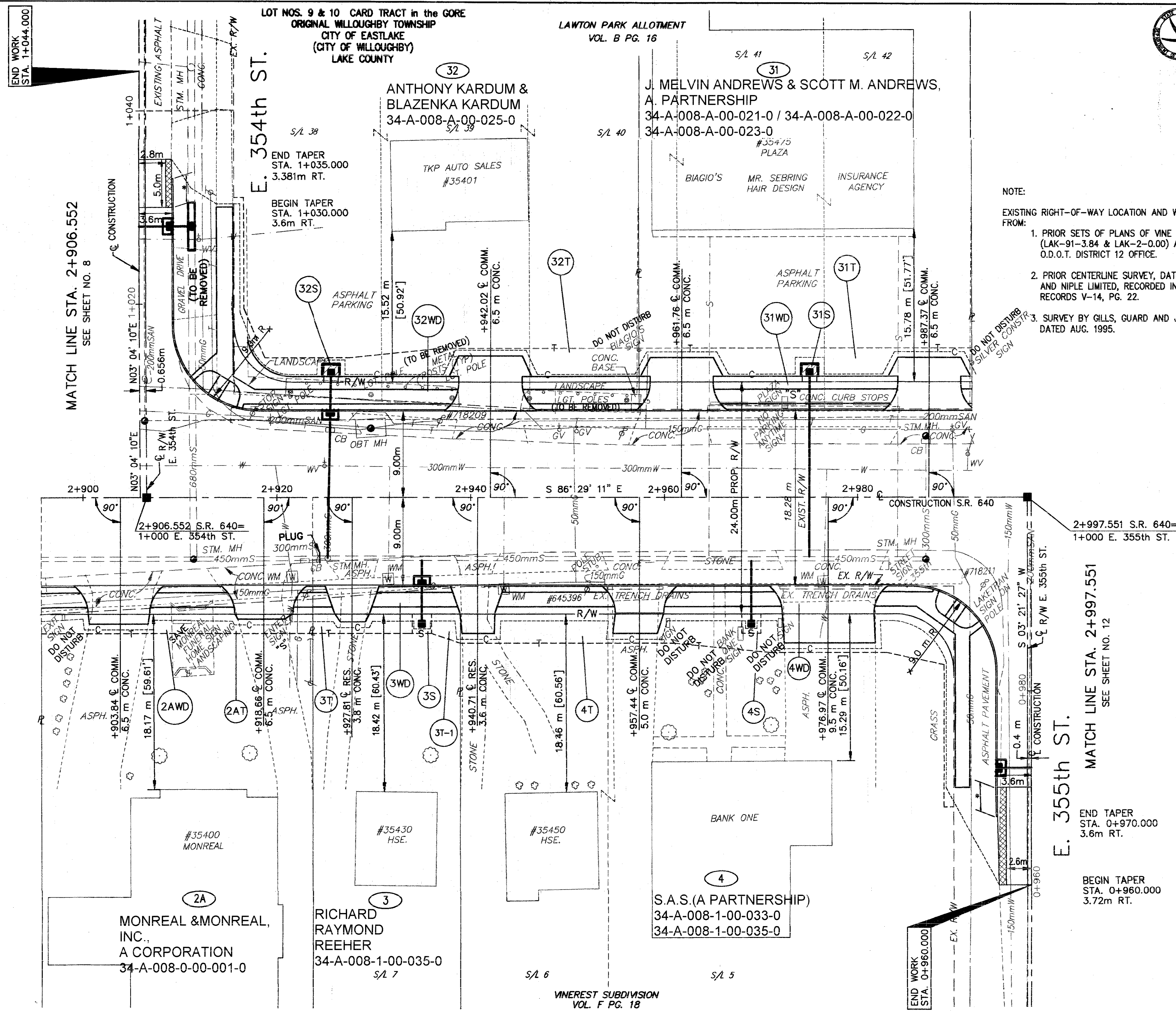
STATE PROJECT NO. 126430

RIGHT OF WAY PLAN STA. 2+906.552 TO STA. 2+997.551

LAK - 640 - 2865 (178)

10 / 21

178  
189



END WORK STA. 1+044.000

MATCH LINE STA. 2+906.552  
SEE SHEET NO. 8

- NOTE:  
EXISTING RIGHT-OF-WAY LOCATION AND WIDTH HAS BEEN DETERMINED FROM:
1. PRIOR SETS OF PLANS OF VINE STREET IMPROVEMENTS, (LAK-91-3.84 & LAK-2-0.00) ARE FILED AT THE O.D.O.T. DISTRICT 12 OFFICE.
  2. PRIOR CENTERLINE SURVEY, DATED JULY 1990, BY BURGESS AND NIPLÉ LIMITED, RECORDED IN THE LAKE COUNTY MAP RECORDS V-14, PG. 22.
  3. SURVEY BY GILLS, GUARD AND JOHNSON, INC., DATED AUG. 1995.

MATCH LINE STA. 2+997.551  
SEE SHEET NO. 12

END TAPER STA. 0+970.000  
3.6m RT.  
  
BEGIN TAPER STA. 0+960.000  
3.72m RT.

END WORK STA. 0+960.000

LOT NOS. 9 & 10 CARD TRACT in the GORE  
ORIGINAL WILLOUGHBY TOWNSHIP  
CITY OF EASTLAKE  
(CITY OF WILLOUGHBY)  
LAKE COUNTY

LAWTON PARK ALLOTMENT  
VOL. B PG. 16

VINEREST SUBDIVISION  
VOL. F PG. 18

E. 354th ST.

E. 355th ST.

ANTHONY KARDUM & BLAZENKA KARDUM  
34-A-008-A-00-025-0

J. MELVIN ANDREWS & SCOTT M. ANDREWS,  
A PARTNERSHIP  
34-A-008-A-00-021-0 / 34-A-008-A-00-022-0  
34-A-008-A-00-023-0

MONREAL & MONREAL, INC.,  
A CORPORATION  
34-A-008-0-00-001-0

RICHARD RAYMOND REEHER  
34-A-008-1-00-035-0

S.A.S. (A PARTNERSHIP)  
34-A-008-1-00-033-0  
34-A-008-1-00-035-0

#35400 MONREAL

#35430 HSE.

#35450 HSE.

BANK ONE

END TAPER STA. 1+035.000  
3.381m RT.  
  
BEGIN TAPER STA. 1+030.000  
3.6m RT.

2+997.551 S.R. 640 =  
1+000 E. 355th ST.

2+906.552 S.R. 640 =  
1+000 E. 354th ST.