

LOT NOS. 9 & 10 CARD TRACT in the GORE
ORIGINAL WILLOUGHBY TOWNSHIP
CITY OF EASTLAKE
(CITY OF WILLOUGHBY)
LAKE COUNTY

LAWTON PARK ALLOTMENT
VOL. B PG. 16



FEDERAL PROJECT NO.
14199

STATE PROJECT NO.
126430

RIGHT OF WAY PLAN
STA. 2+798.000 TO STA. 2+906.552

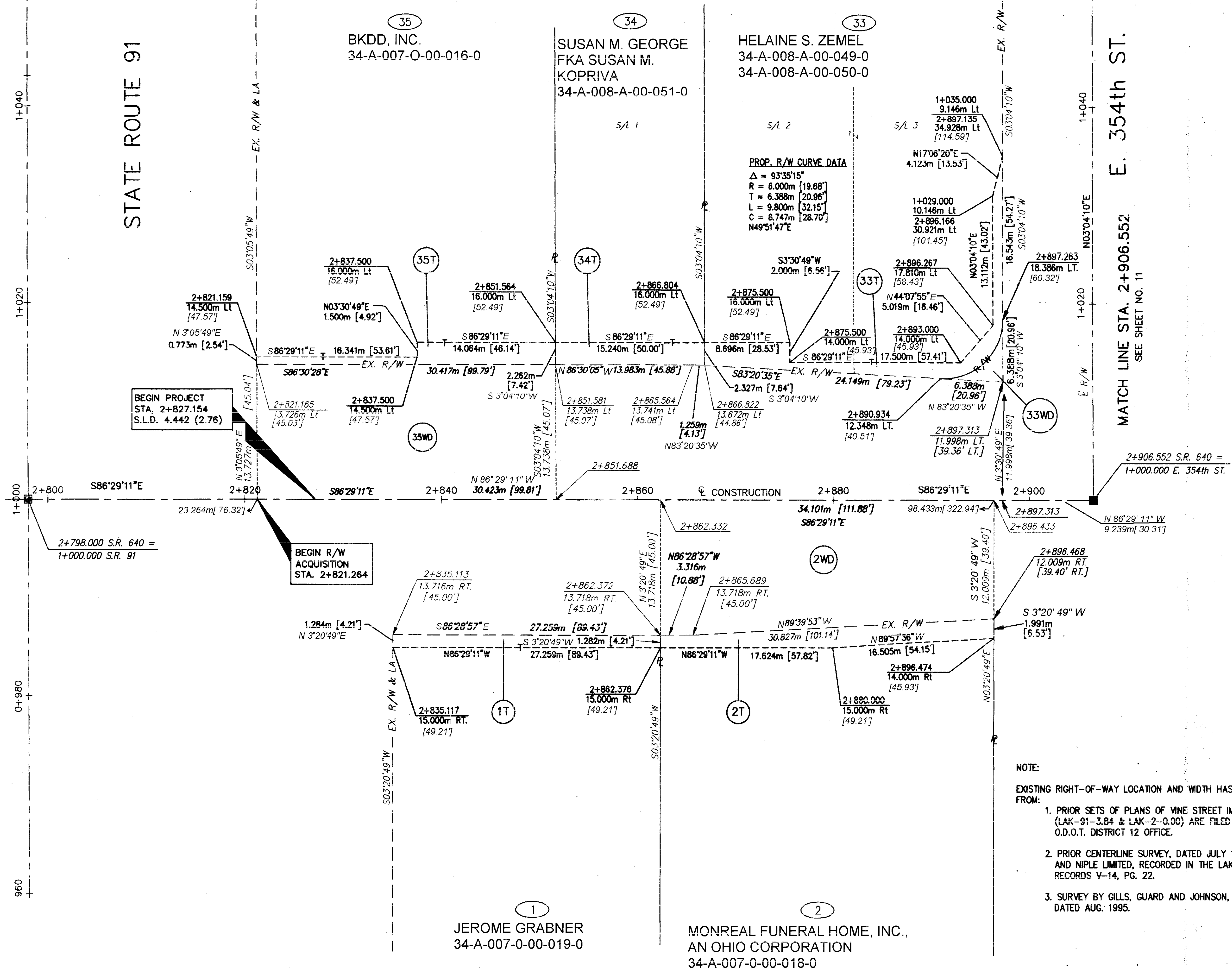
LAK - 640 - 2865 (178)

9 / 21

177
189

STATE ROUTE 91

E. 354th ST.
MATCH LINE STA. 2+906.552
SEE SHEET NO. 11



NOTE:
EXISTING RIGHT-OF-WAY LOCATION AND WIDTH HAS BEEN DETERMINED FROM:
1. PRIOR SETS OF PLANS OF VINE STREET IMPROVEMENTS, (LAK-91-3.84 & LAK-2-0.00) ARE FILED AT THE O.D.O.T. DISTRICT 12 OFFICE.
2. PRIOR CENTERLINE SURVEY, DATED JULY 1990, BY BURGESS AND NIPLE LIMITED, RECORDED IN THE LAKE COUNTY MAP RECORDS V-14, PG. 22.
3. SURVEY BY GILLS, GUARD AND JOHNSON, INC., DATED AUG. 1995.

H:\1998\98208\ROW RW1.DWG