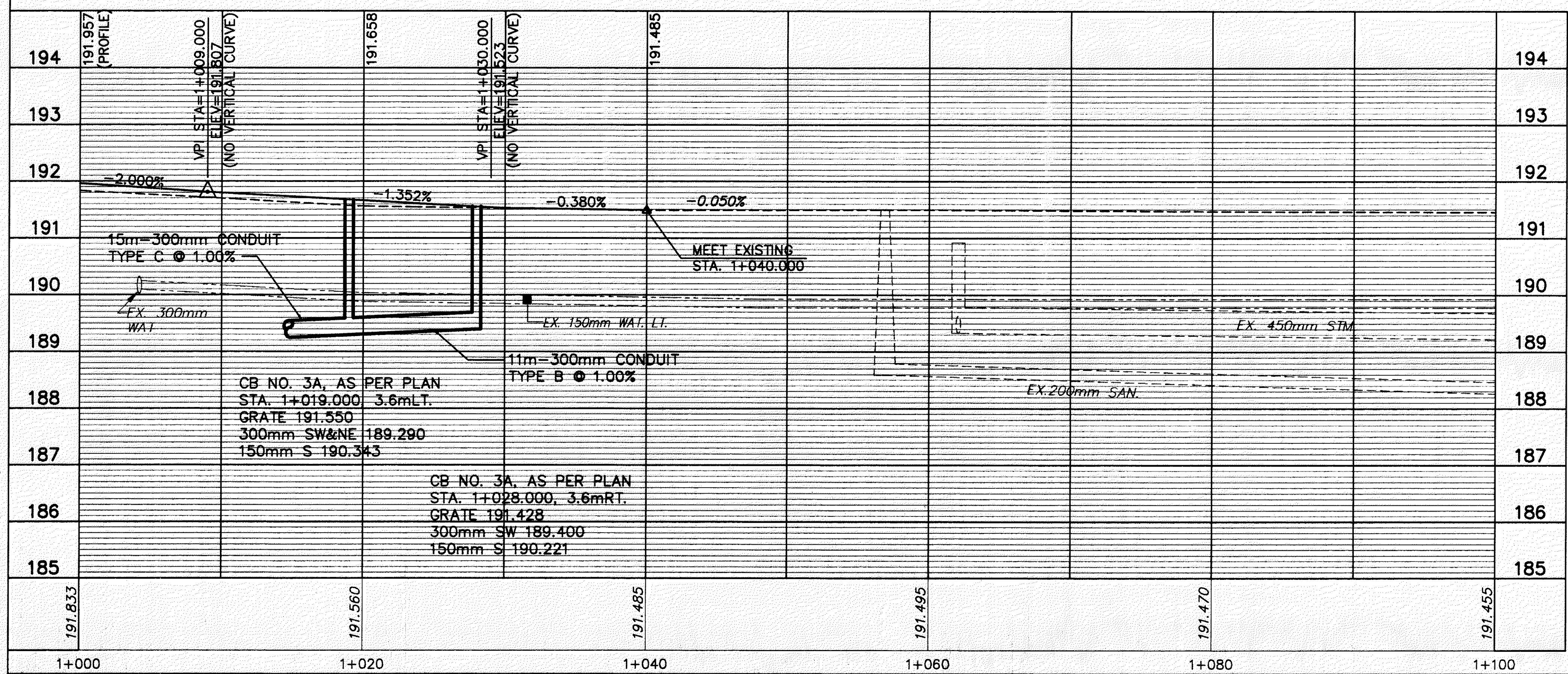
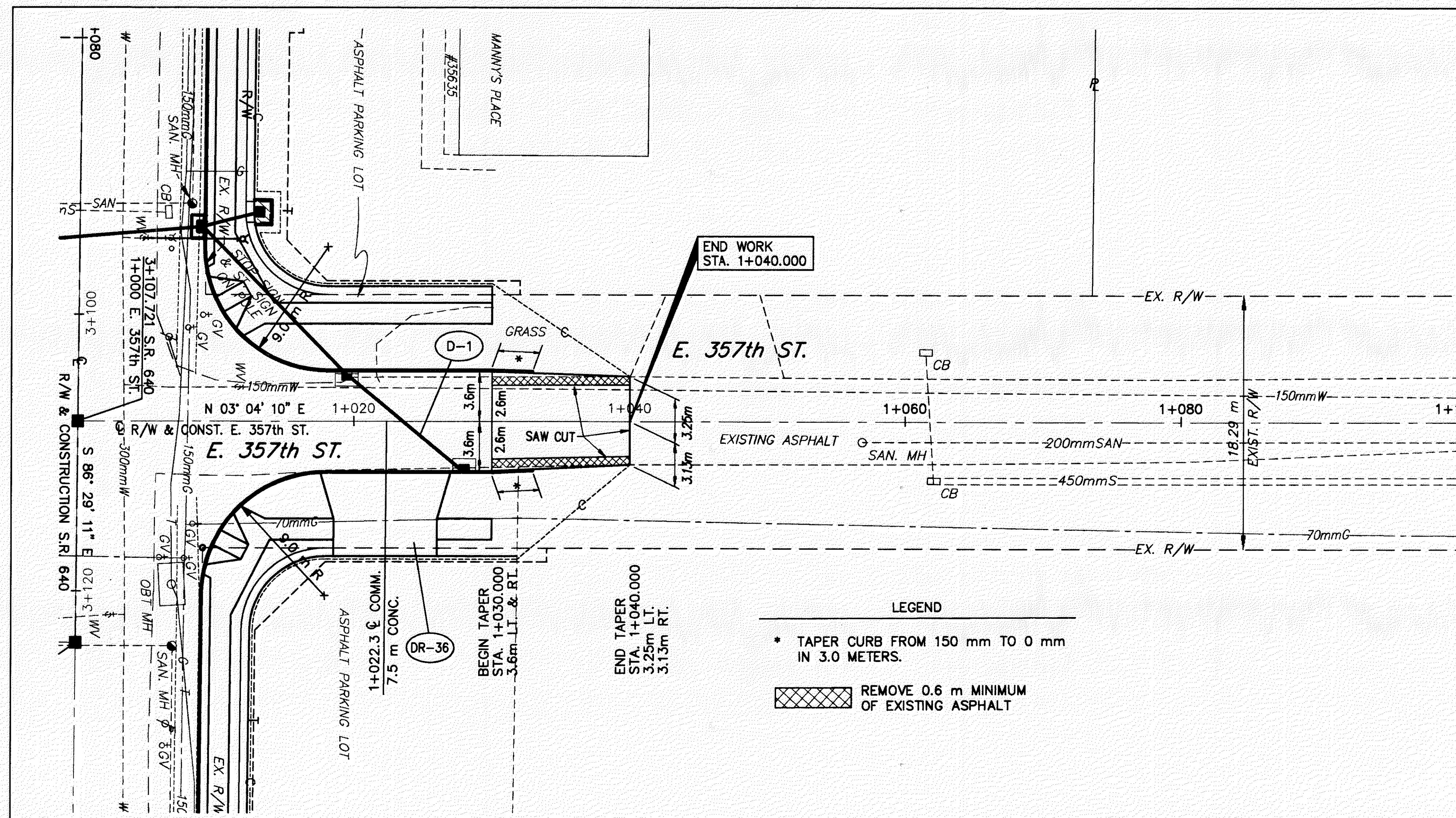


H: /1998/98208/SDSK/E357N.DWG



FOR TYPICAL SECTIONS, SEE SHEETS 3-7
 FOR ROADWAY, DRAINAGE AND SANITARY QUANTITIES, SEE SHEET 94
 FOR CROSS SECTIONS AND PIPE PROFILES, SEE SHEETS 111-122
 FOR INTERSECTION DETAILS, SEE SHEETS 123-129
 FOR DRIVEWAY PROFILES, SEE SHEETS 130-137
 FOR DRIVEWAY DETAILS, SEE SHEET 138
 FOR DRAINAGE DETAILS, SEE SHEETS 139-140
 FOR WATER WORK DETAILS, SEE SHEETS 141-144
 FOR MONUMENT LOCATIONS, SEE SHEET 2
 FOR SIGNAL PLAN, SEE SHEETS 150-158
 FOR SIGNING PLAN, SEE SHEETS 165-168
 FOR PAVEMENT MARKING DETAILS, SEE SHEET 159-164
 FOR SAW CUT AT EXISTING PARKING LOTS, SEE SHEET 138
 FOR SUB-SUMMARIES, SEE SHEETS 32-43

PLAN AND PROFILE
EAST 357th STREET (NORTH)

LAK - 640 - 2.865 (1.78)

93
189

N
HORIZONTAL
SCALE IN METERS

CALC. BY:
CHECKED BY: