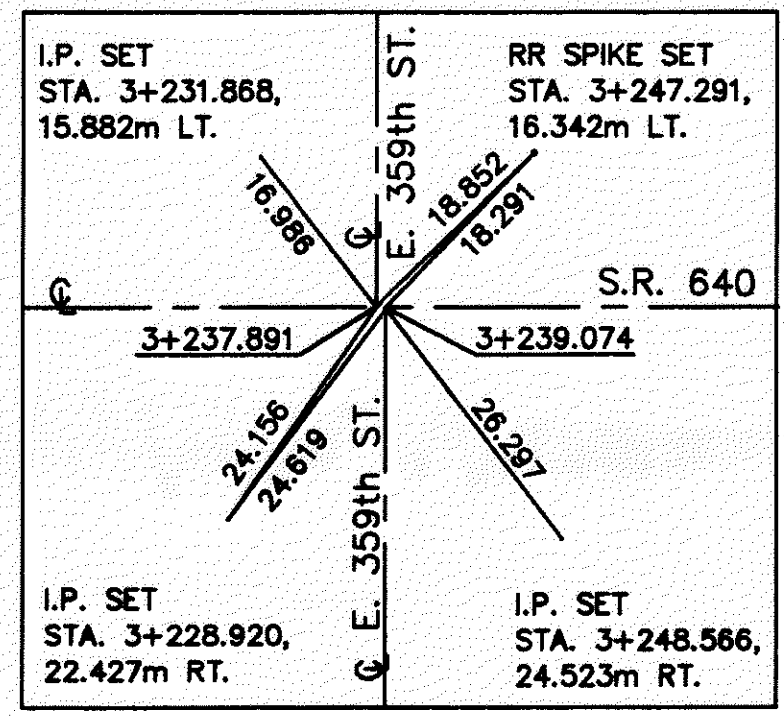
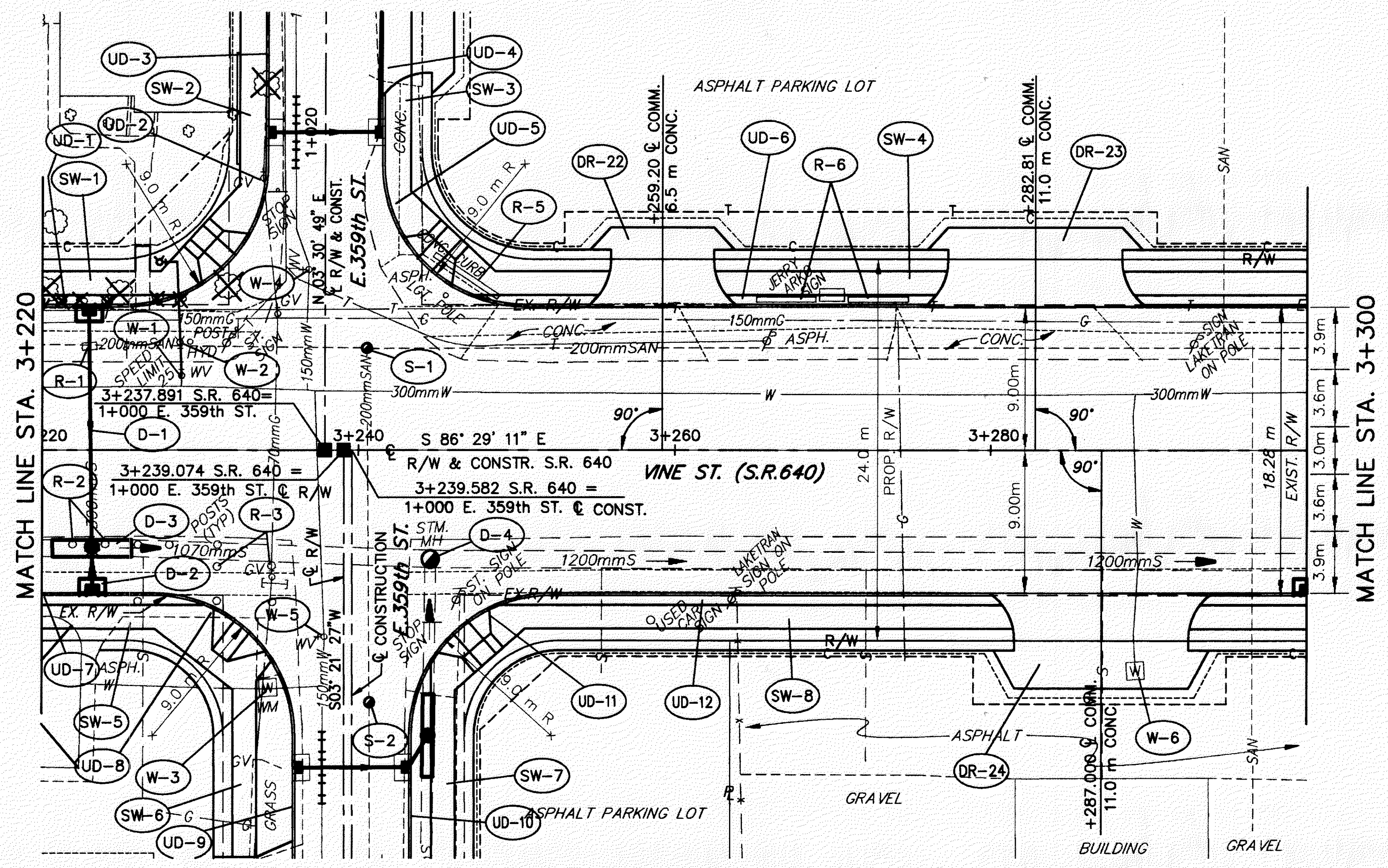


H:\1998\98208\SDSK\BORDERS.DWG SHT6



BENCH MARK
IRON PIPE SET
STA. 3+248.566,
24.523m RT.
ELEV. = 191.551

194	191.620			191.560		191.500		191.440		191.380	194
193											193
192											192
191											191
190											190
189											189
188											188
187											187
186											186
185											185
	191.67			191.65		191.63		191.59		191.56	
				3+240		3+260		3+280			

FOR TYPICAL SECTIONS, SEE SHEETS 3-7
 FOR ROADWAY, DRAINAGE AND SANITARY QUANTITIES, SEE SHEET 58
 FOR CROSS SECTIONS AND PIPE PROFILES, SEE SHEETS 65-77
 FOR INTERSECTION DETAILS, SEE SHEETS 123-129
 FOR DRIVEWAY PROFILES, SEE SHEETS 130-137
 FOR DRIVEWAY DETAILS, SEE SHEET 138
 FOR DRAINAGE DETAILS, SEE SHEETS 139-140
 FOR WATER WORK DETAILS, SEE SHEETS 141-144
 FOR MONUMENT LOCATIONS, SEE SHEET 2
 FOR SIGNAL PLAN, SEE SHEETS 150-158
 FOR SIGNING PLAN, SEE SHEETS 165-168
 FOR PAVEMENT MARKING DETAILS, SEE SHEET 159-164
 FOR SAW CUT AT EXISTING PARKING LOTS, SEE SHEET 138
 FOR SUB-SUMMARIES, SEE SHEETS 32-43