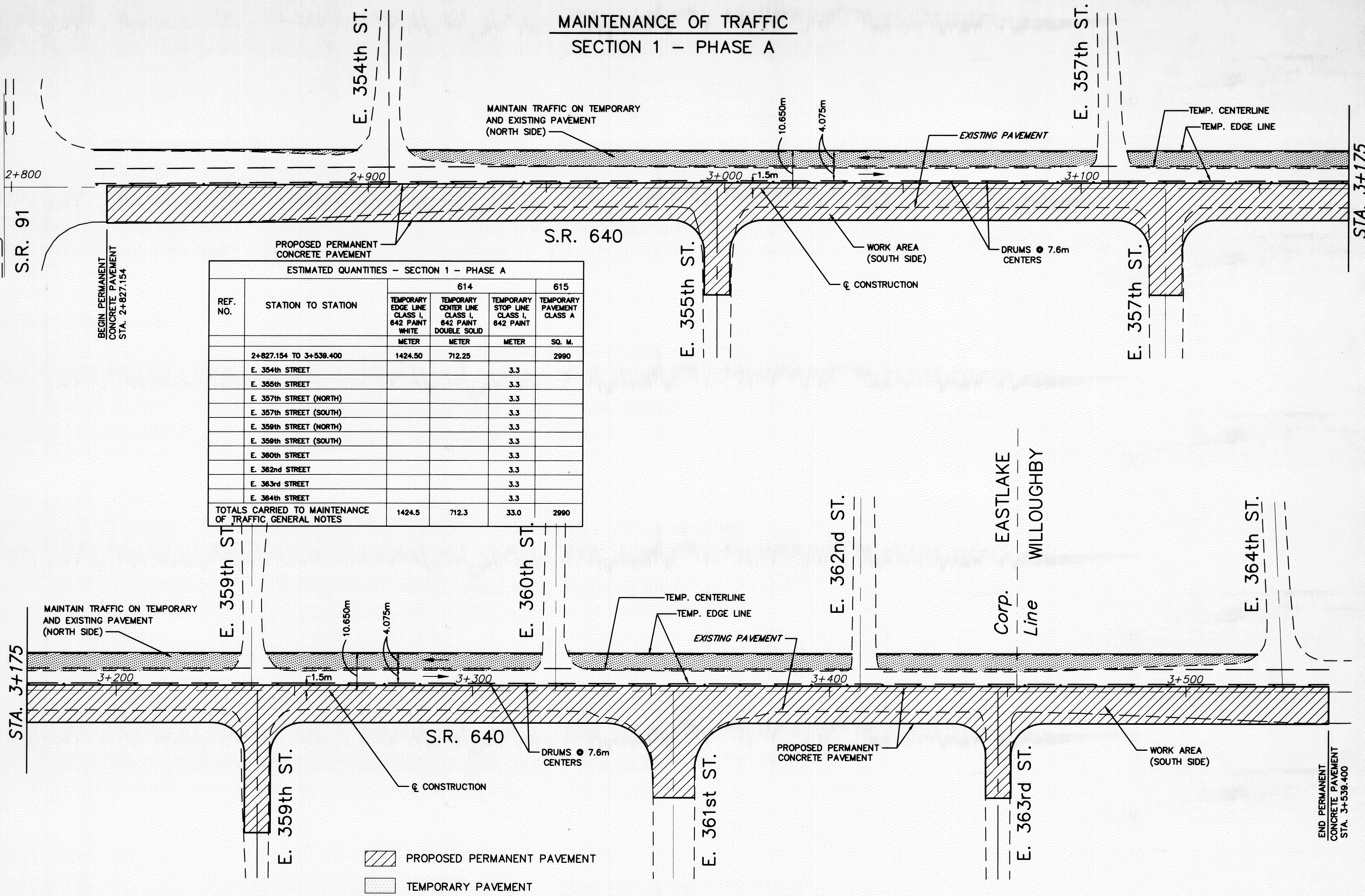


MAINTENANCE OF TRAFFIC SECTION 1 - PHASE A



PROPOSED PERMANENT
CONCRETE PAVEMENT

ESTIMATED QUANTITIES - SECTION 1 - PHASE A					
REF. NO.	STATION TO STATION	614		615	SQ. M.
		TEMPORARY EDGE LINE CLASS I, 642 PAINT WHITE	TEMPORARY CENTER LINE CLASS I, 642 PAINT DOUBLE SOLID	TEMPORARY STOP LINE CLASS I, 642 PAINT	
		METER	METER	METER	
	2+827.154 TO 3+539.400	1424.50	712.25		2990
	E. 354th STREET			3.3	
	E. 355th STREET			3.3	
	E. 357th STREET (NORTH)			3.3	
	E. 357th STREET (SOUTH)			3.3	
	E. 359th STREET (NORTH)			3.3	
	E. 359th STREET (SOUTH)			3.3	
	E. 360th STREET			3.3	
	E. 362nd STREET			3.3	
	E. 363rd STREET			3.3	
	E. 364th STREET			3.3	
TOTALS CARRIED TO MAINTENANCE OF TRAFFIC GENERAL NOTES		1424.5	712.3	33.0	2990

	PROPOSED PERMANENT PAVEMENT
	TEMPORARY PAVEMENT

N

HORIZONTAL SCALE IN METERS

CALC. BY: A.E.P.
CHECKED BY: I.M.H.

MAINTENANCE OF TRAFFIC
PHASE CONSTRUCTION PLANS

LAK-640-2.865 (1.78)