



HORIZONTAL SCALE IN METERS

FEDERAL PROJECT NO. 14199

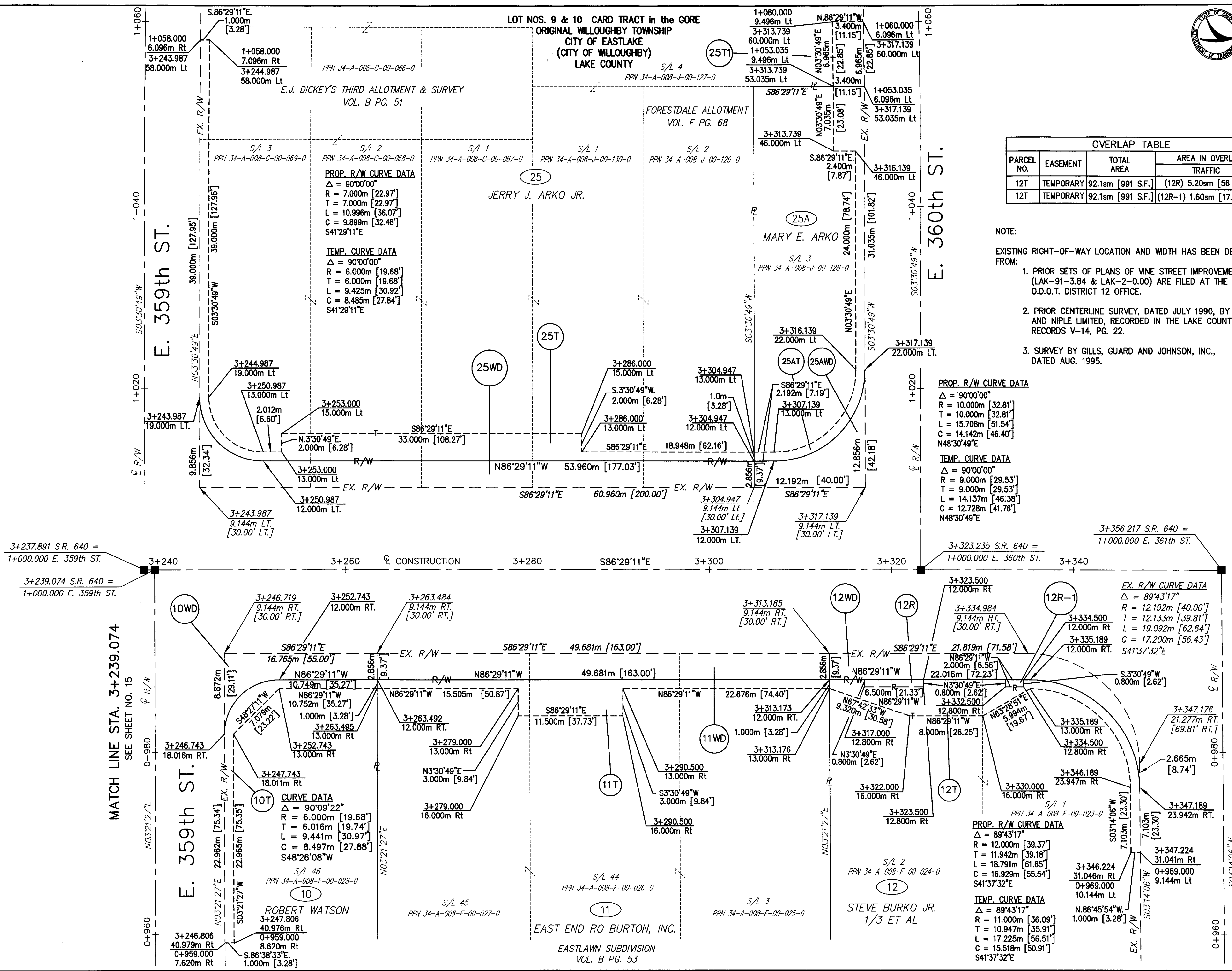
STATE PROJECT NO. 126430

RIGHT OF WAY PLAN STA. 3+239.074 TO STA. 3+356.217

LAK - 640 - 2865 (178)

17/21

185/189



OVERLAP TABLE

PARCEL NO.	EASEMENT	TOTAL AREA	AREA IN OVERLAP	
			TRAFFIC	
12T	TEMPORARY	92.1sm [991 S.F.]	(12R) 5.20sm [56 S.F.]	
12T	TEMPORARY	92.1sm [991 S.F.]	(12R-1) 1.60sm [17.2 S.F.]	

NOTE:  
EXISTING RIGHT-OF-WAY LOCATION AND WIDTH HAS BEEN DETERMINED FROM:

1. PRIOR SETS OF PLANS OF VINE STREET IMPROVEMENTS, (LAK-91-3.84 & LAK-2-0.00) ARE FILED AT THE O.D.O.T. DISTRICT 12 OFFICE.
2. PRIOR CENTERLINE SURVEY, DATED JULY 1990, BY BURGESS AND NIPLE LIMITED, RECORDED IN THE LAKE COUNTY MAP RECORDS V-14, PG. 22.
3. SURVEY BY GILLS, GUARD AND JOHNSON, INC., DATED AUG. 1995.

PROP. R/W CURVE DATA  
 $\Delta = 90^{\circ}00'00''$   
 $R = 10.000m [32.81']$   
 $T = 10.000m [32.81']$   
 $L = 15.708m [51.54']$   
 $C = 14.142m [46.40']$   
 $N48^{\circ}30'49''E$

TEMP. CURVE DATA  
 $\Delta = 90^{\circ}00'00''$   
 $R = 9.000m [29.53']$   
 $T = 9.000m [29.53']$   
 $L = 14.137m [46.38']$   
 $C = 12.728m [41.76']$   
 $N48^{\circ}30'49''E$

PROP. R/W CURVE DATA  
 $\Delta = 90^{\circ}00'00''$   
 $R = 7.000m [22.97']$   
 $T = 7.000m [22.97']$   
 $L = 10.996m [36.07']$   
 $C = 9.899m [32.48']$   
 $S41^{\circ}29'11''E$

TEMP. CURVE DATA  
 $\Delta = 90^{\circ}00'00''$   
 $R = 6.000m [19.68']$   
 $T = 6.000m [19.68']$   
 $L = 9.425m [30.92']$   
 $C = 8.485m [27.84']$   
 $S41^{\circ}29'11''E$

CURVE DATA  
 $\Delta = 90^{\circ}09'22''$   
 $R = 6.000m [19.68']$   
 $T = 6.016m [19.74']$   
 $L = 9.441m [30.97']$   
 $C = 8.497m [27.88']$   
 $S48^{\circ}26'08''W$

EX. R/W CURVE DATA  
 $\Delta = 89^{\circ}43'17''$   
 $R = 12.192m [40.00']$   
 $T = 12.133m [39.81']$   
 $L = 19.092m [62.64']$   
 $C = 17.200m [56.43']$   
 $S41^{\circ}37'32''E$

PROP. R/W CURVE DATA  
 $\Delta = 89^{\circ}43'17''$   
 $R = 12.000m [39.37']$   
 $T = 11.942m [39.18']$   
 $L = 18.791m [61.65']$   
 $C = 16.929m [55.54']$   
 $S41^{\circ}37'32''E$

TEMP. CURVE DATA  
 $\Delta = 89^{\circ}43'17''$   
 $R = 11.000m [36.09']$   
 $T = 10.947m [35.91']$   
 $L = 17.225m [56.51']$   
 $C = 15.518m [50.91']$   
 $S41^{\circ}37'32''E$

MATCH LINE STA. 3+356.217  
SEE SHEET NO. 19

MATCH LINE STA. 3+239.074  
SEE SHEET NO. 15

H:\1998\98208\ROW\RWS.PLT