

HORIZONTAL SCALE IN METERS

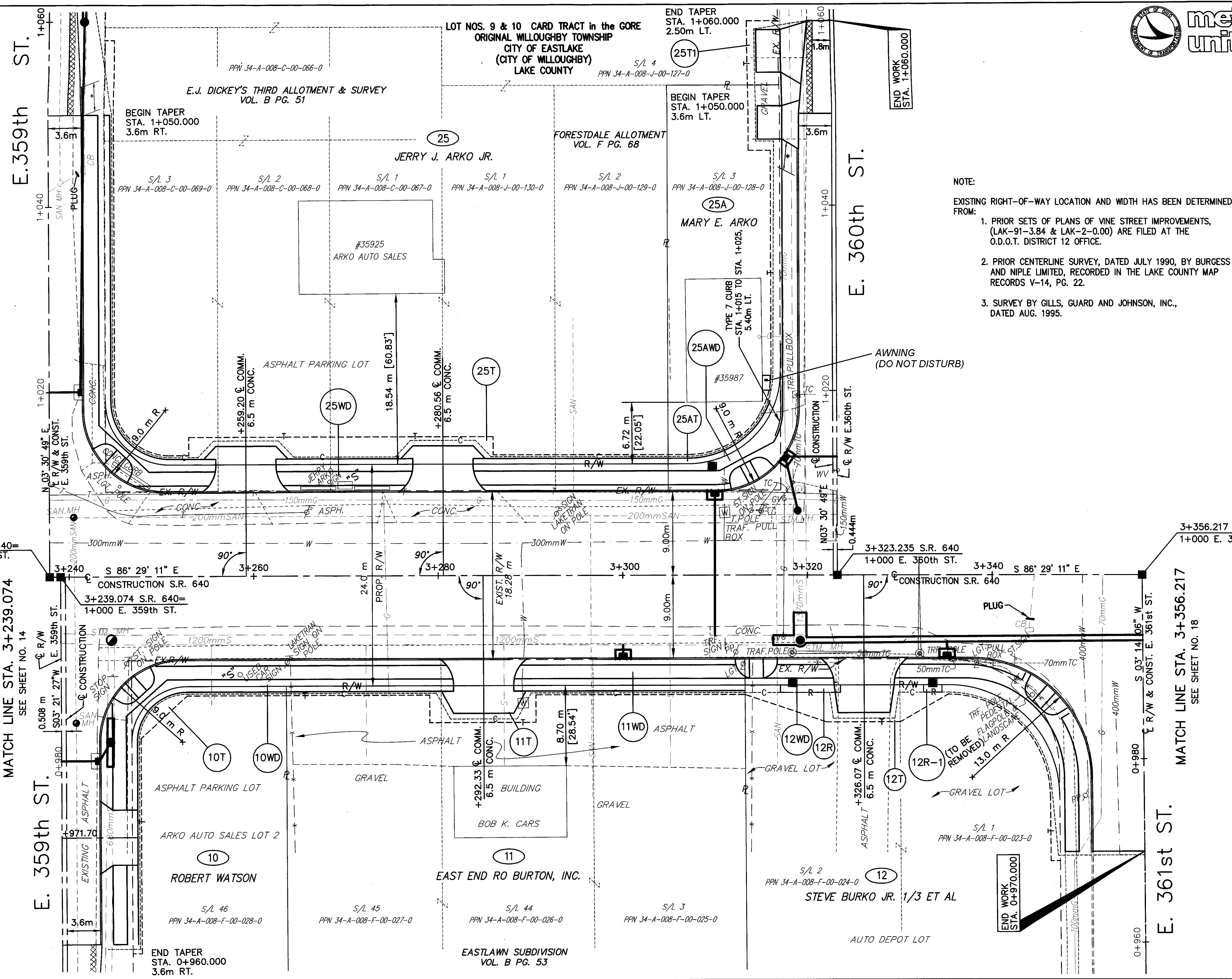
FEDERAL PROJECT NO. 14199

STATE PROJECT NO. 126430

RIGHT OF WAY PLAN  
STA. 3+239.074 TO STA. 3+356.217

LAK - 640 - 2.865 (1.78)

16 / 21  
184 / 189



NOTE:  
EXISTING RIGHT-OF-WAY LOCATION AND WIDTH HAS BEEN DETERMINED FROM:  
1. PRIOR SETS OF PLANS OF VINE STREET IMPROVEMENTS, (LAK-91-3.84 & LAK-2-0.00) ARE FILED AT THE O.D.O.T. DISTRICT 12 OFFICE.  
2. PRIOR CENTERLINE SURVEY, DATED JULY 1990, BY BURGESS AND NIPLÉ LIMITED, RECORDED IN THE LAKE COUNTY MAP RECORDS V-14, PG. 22.  
3. SURVEY BY GILLS, GUARD AND JOHNSON, INC., DATED AUG. 1995.

MATCH LINE STA. 3+239.074  
SEE SHEET NO. 14

MATCH LINE STA. 3+356.217  
SEE SHEET NO. 18

REV.	DATE	DESCRIPTION
1	5/01	Added a note to pcd 25 "Awning (Do Not Disturb)"