

STATE PROJECT NO. 14199

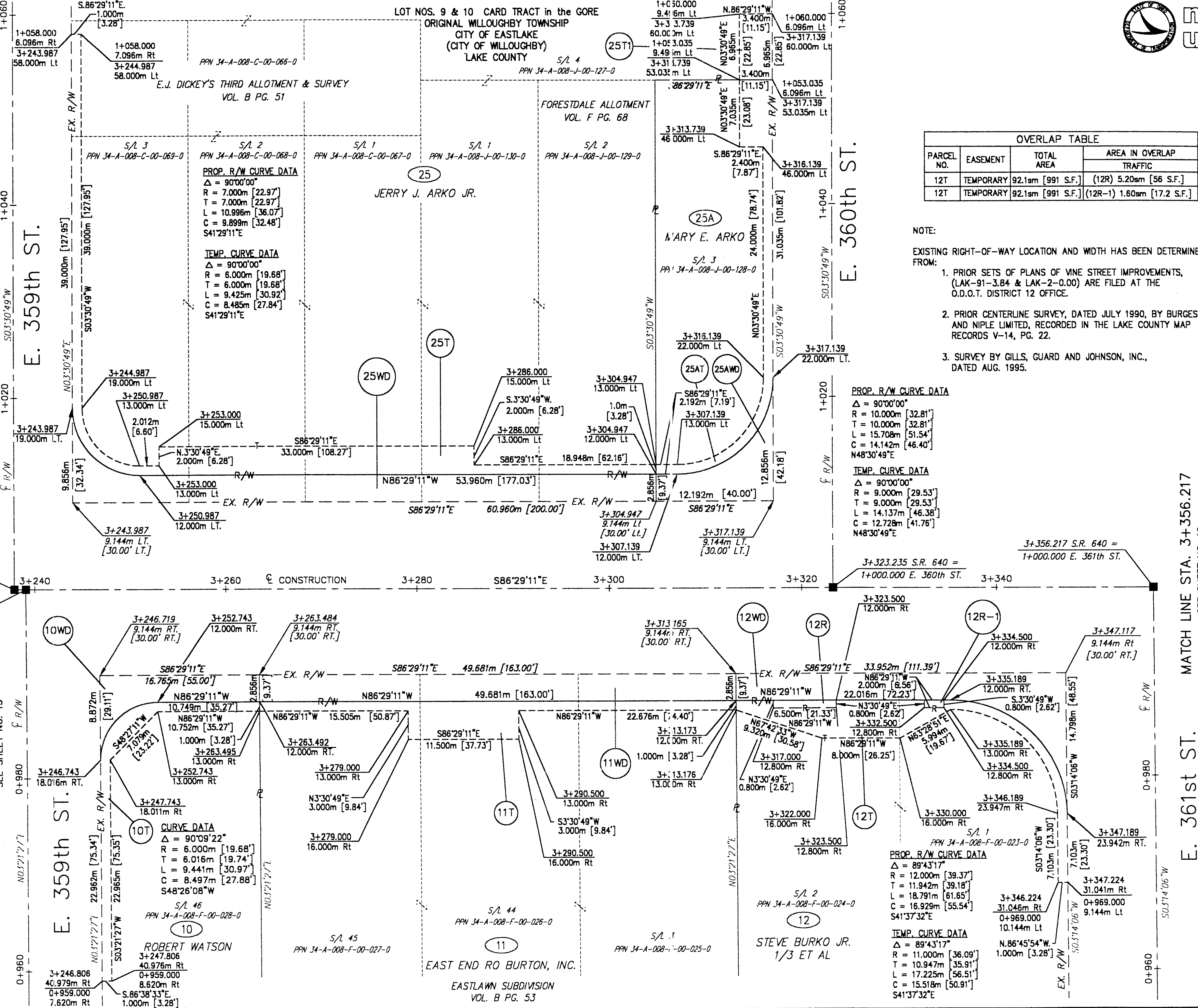
STATE PROJECT NO. 126430

RIGHT OF WAY PLAN
STA. 3+239.074 TO STA. 3+356.217

LAK - 640 - 2.865 (1.78)

REV. DATE DESCRIPTION
17/21
185/189

LOT NOS. 9 & 10 CARD TRACT in the GORE
ORIGINAL WILLOUGHBY TOWNSHIP
CITY OF EASTLAKE
(CITY OF WILLOUGHBY)
LAKE COUNTY



PROP. R/W CURVE DATA
Δ = 90°00'00"
R = 7.000m [22.97']
T = 7.000m [22.97']
L = 10.996m [36.07']
C = 9.899m [32.48']
S41°29'11"E

TEMP. CURVE DATA
Δ = 90°00'00"
R = 6.000m [19.68']
T = 6.000m [19.68']
L = 9.425m [30.92']
C = 8.485m [27.84']
S41°29'11"E

PROP. R/W CURVE DATA
Δ = 90°00'00"
R = 10.000m [32.81']
T = 10.000m [32.81']
L = 15.708m [51.54']
C = 14.142m [46.40']
N48°30'49"E

TEMP. CURVE DATA
Δ = 90°00'00"
R = 9.000m [29.53']
T = 9.000m [29.53']
L = 14.137m [46.38']
C = 12.728m [41.76']
N48°30'49"E

OVERLAP TABLE

PARCEL NO.	EASEMENT	TOTAL AREA	AREA IN OVERLAP	
			TRAFFIC	
12T	TEMPORARY	92.1sm [991 S.F.]	(12R) 5.20sm [56 S.F.]	
12T	TEMPORARY	92.1sm [991 S.F.]	(12R-1) 1.60sm [17.2 S.F.]	

- NOTE:
EXISTING RIGHT-OF-WAY LOCATION AND WIDTH HAS BEEN DETERMINED FROM:
- PRIOR SETS OF PLANS OF VINE STREET IMPROVEMENTS, (LAK-91-3.84 & LAK-2-0.00) ARE FILED AT THE O.D.O.T. DISTRICT 12 OFFICE.
 - PRIOR CENTERLINE SURVEY, DATED JULY 1990, BY BURGESS AND NIPLE LIMITED, RECORDED IN THE LAKE COUNTY MAP RECORDS V-14, PG. 22.
 - SURVEY BY GILLS, GUARD AND JOHNSON, INC., DATED AUG. 1995.

MATCH LINE STA. 3+239.074
SEE SHEET NO. 15

MATCH LINE STA. 3+356.217
SEE SHEET NO. 19

CURVE DATA
Δ = 90°09'22"
R = 6.000m [19.68']
T = 6.016m [19.74']
L = 9.441m [30.97']
C = 8.497m [27.88']
S48°26'08"W

PROP. R/W CURVE DATA
Δ = 89°43'17"
R = 12.000m [39.37']
T = 11.942m [39.18']
L = 18.791m [61.65']
C = 16.929m [55.54']
S41°37'32"E

TEMP. CURVE DATA
Δ = 89°43'17"
R = 11.000m [36.09']
T = 10.947m [35.91']
L = 17.225m [56.51']
C = 15.518m [50.91']
S41°37'32"E

H:\1998\98208\ROW\RW5.PLT