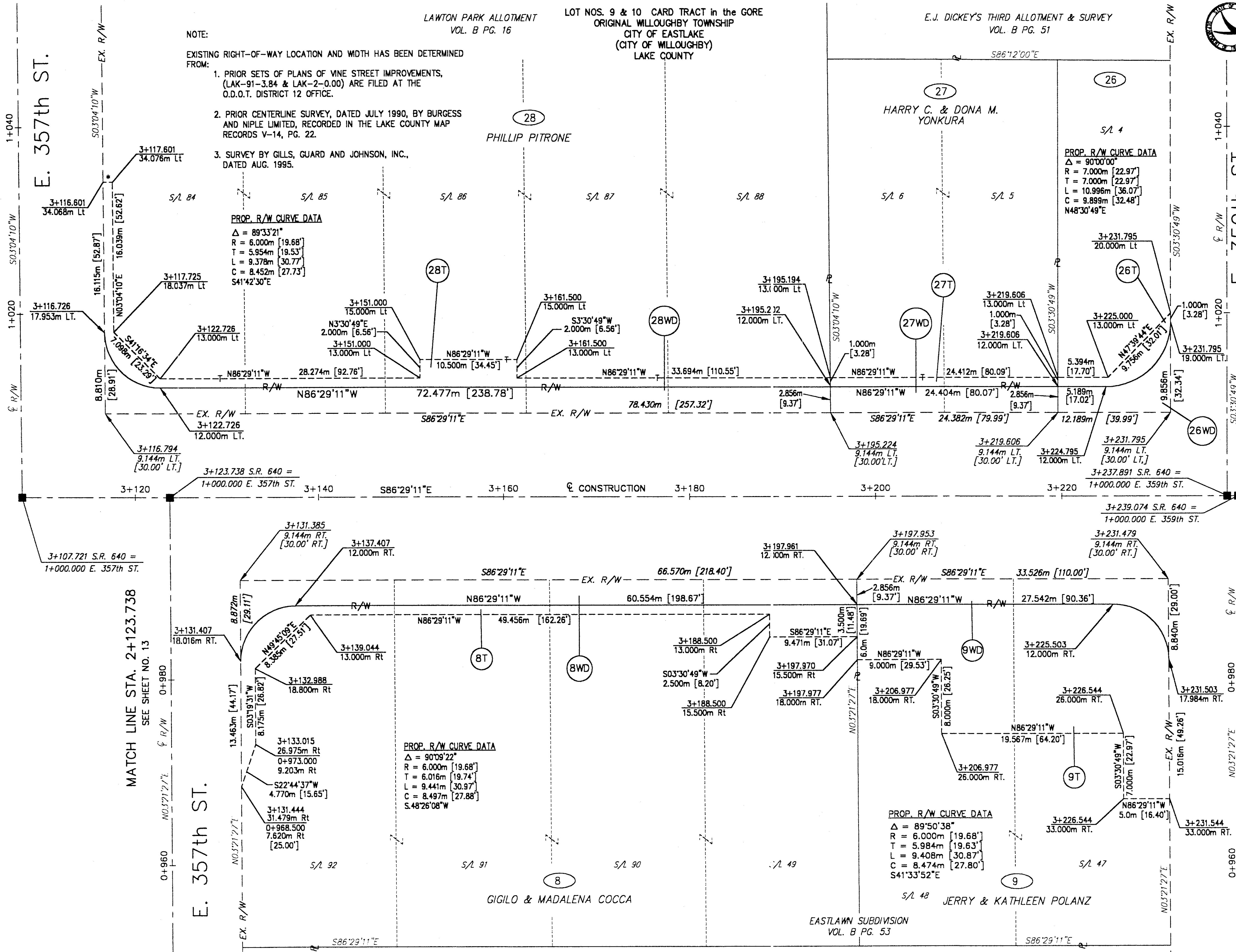


H:\1998\9826\ROW\RW4.DWG

REV.	DATE	DESCRIPTION
1	10/12/99	REMOVED OWNER PCL 28



NOTE:  
EXISTING RIGHT-OF-WAY LOCATION AND WIDTH HAS BEEN DETERMINED FROM:

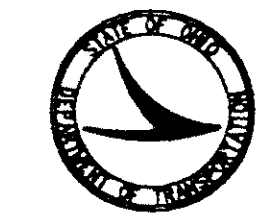
1. PRIOR SETS OF PLANS OF VINE STREET IMPROVEMENTS, (LAK-91-3.84 & LAK-2-0.00) ARE FILED AT THE O.D.O.T. DISTRICT 12 OFFICE.
2. PRIOR CENTERLINE SURVEY, DATED JULY 1990, BY BURGESS AND NIPLE LIMITED, RECORDED IN THE LAKE COUNTY MAP RECORDS V-14, PG. 22.
3. SURVEY BY GILLS, GUARD AND JOHNSON, INC., DATED AUG. 1995.

PROP. R/W CURVE DATA  
 $\Delta = 89^{\circ}33'21''$   
 $R = 6.000m [19.68']$   
 $T = 5.954m [19.53']$   
 $L = 9.378m [30.77']$   
 $C = 8.452m [27.73']$   
 $S41^{\circ}42'30''E$

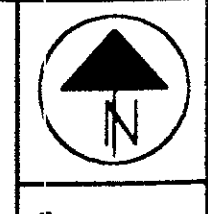
PROP. R/W CURVE DATA  
 $\Delta = 90^{\circ}09'22''$   
 $R = 6.000m [19.68']$   
 $T = 6.016m [19.74']$   
 $L = 9.441m [30.97']$   
 $C = 8.497m [27.88']$   
 $S48^{\circ}26'08''W$

PROP. R/W CURVE DATA  
 $\Delta = 89^{\circ}50'38''$   
 $R = 6.000m [19.68']$   
 $T = 5.984m [19.63']$   
 $L = 9.408m [30.87']$   
 $C = 8.474m [27.80']$   
 $S41^{\circ}33'52''E$

PROP. R/W CURVE DATA  
 $\Delta = 90^{\circ}00'00''$   
 $R = 7.000m [22.97']$   
 $T = 7.000m [22.97']$   
 $L = 10.996m [36.07']$   
 $C = 9.899m [32.48']$   
 $N48^{\circ}30'49''E$



metric units



HORIZONTAL SCALE IN METERS

FEDERAL PROJECT NO. 14199

STATE PROJECT NO. 126430

RIGHT OF WAY PLAN  
STA. 3+123.738 TO STA. 3+239.074

LAK - 640 - 2.865 (1.78)

15 / 21

183 / 189

MATCH LINE STA. 3+239.074  
SEE SHEET NO. 17

MATCH LINE STA. 2+123.738  
SEE SHEET NO. 13

E. 357th St.

E. 359th St.

LAWTON PARK ALLOTMENT  
VOL. B PG. 16

LOT NOS. 9 & 10 CARD TRACT in the GORE  
ORIGINAL WILLOUGHBY TOWNSHIP  
CITY OF EASTLAKE  
(CITY OF WILLOUGHBY)  
LAKE COUNTY

E.J. DICKEY'S THIRD ALLOTMENT & SURVEY  
VOL. B PG. 51

PHILLIP PITRONE

HARRY C. & DONA M. YONKURA

GIGILO & MADALENA COCCA

JERRY & KATHLEEN POLANZ

EASTLAWN SUBDIVISION  
VOL. B PG. 53