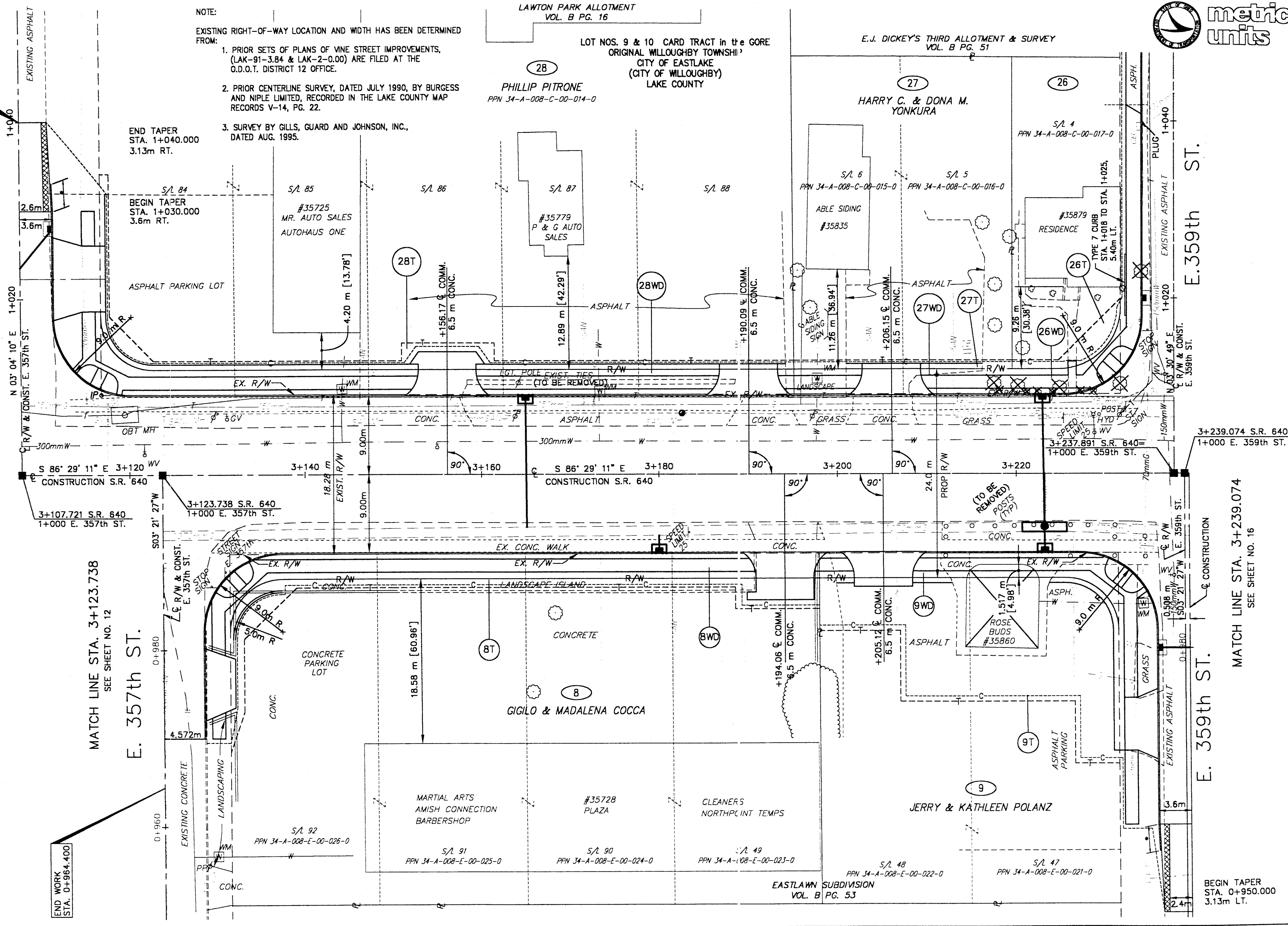


H:\1998\98208\ROW\RWPL4.DWG

REV.	DATE	DESCRIPTION
1	10/12/99	REMOVED OWNER PCL 26



NOTE:
 EXISTING RIGHT-OF-WAY LOCATION AND WIDTH HAS BEEN DETERMINED FROM:
 1. PRIOR SETS OF PLANS OF VINE STREET IMPROVEMENTS, (LAK-91-3.84 & LAK-2-0.00) ARE FILED AT THE O.D.O.T. DISTRICT 12 OFFICE.
 2. PRIOR CENTERLINE SURVEY, DATED JULY 1990, BY BURGESS AND NIPLE LIMITED, RECORDED IN THE LAKE COUNTY MAP RECORDS V-14, PG. 22.
 3. SURVEY BY GILLS, GUARD AND JOHNSON, INC., DATED AUG. 1995.

LAWTON PARK ALLOTMENT VOL. B PG. 16
 LOT NOS. 9 & 10 CARD TRACT in the GORE ORIGINAL WILLOUGHBY TOWNSHIP CITY OF EASTLAKE (CITY OF WILLOUGHBY) LAKE COUNTY
 PHILLIP PITRONE PPN 34-A-008-C-00-014-0

E.J. DICKEY'S THIRD ALLOTMENT & SURVEY VOL. B PG. 51
 HARRY C. & DONA M. YONKURA
 S/L 4 PPN 34-A-008-C-00-017-0
 S/L 5 PPN 34-A-008-C-00-016-0
 S/L 6 PPN 34-A-008-C-00-015-0



END TAPER STA. 1+040.000 3.13m RT.

BEGIN TAPER STA. 1+030.000 3.6m RT.

MATCH LINE STA. 3+123.738 SEE SHEET NO. 12

E. 357th ST.

E. 359th ST.

MATCH LINE STA. 3+239.074 SEE SHEET NO. 16

E. 359th ST.

BEGIN TAPER STA. 0+950.000 3.13m LT.

FEDERAL PROJECT NO. 14199
 STATE PROJECT NO. 126430
 RIGHT OF WAY PLAN STA. 3+123.738 TO STA. 3+239.074
 LAK - 640 - 2.865 (1.78)
 14 / 21
 182 / 189