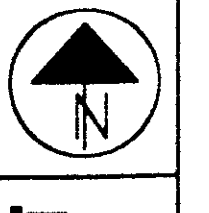
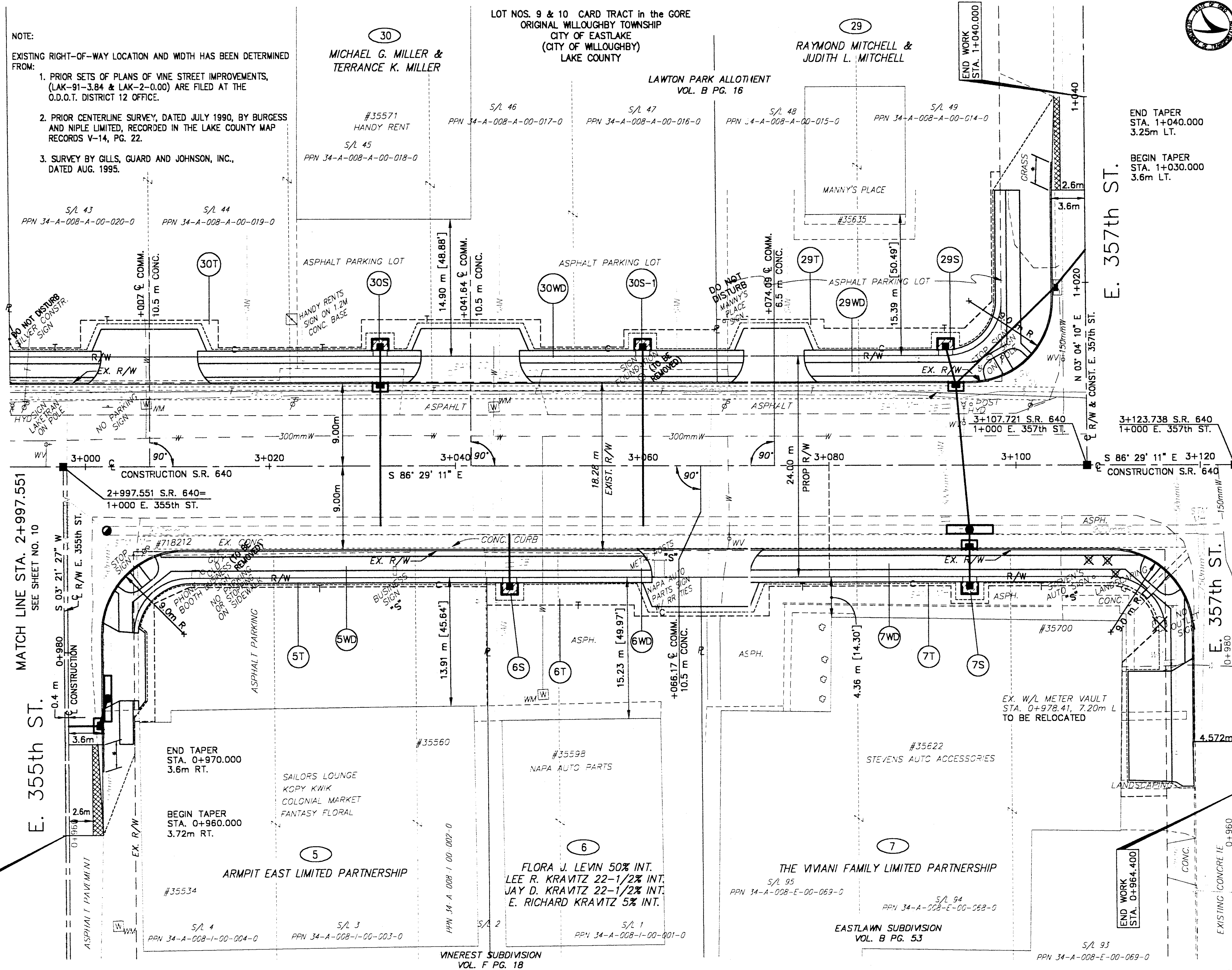


metric units



- NOTE:
- EXISTING RIGHT-OF-WAY LOCATION AND WIDTH HAS BEEN DETERMINED FROM:
1. PRIOR SETS OF PLANS OF VINE STREET IMPROVEMENTS, (LAK-91-3.84 & LAK-2-0.00) ARE FILED AT THE O.D.O.T. DISTRICT 12 OFFICE.
 2. PRIOR CENTERLINE SURVEY, DATED JULY 1990, BY BURGESS AND NIPLE LIMITED, RECORDED IN THE LAKE COUNTY MAP RECORDS V-14, PG. 22.
 3. SURVEY BY GILLS, GUARD AND JOHNSON, INC., DATED AUG. 1995.



END TAPER
STA. 1+040.000
3.25m LT.

BEGIN TAPER
STA. 1+030.000
3.6m LT.

HORIZONTAL
SCALE IN METERS

FEDERAL
PROJECT NO.
14199

STATE
PROJECT NO.
126430

RIGHT OF WAY PLAN
STA. 2+997.551 TO STA. 3+123.738

MATCH LINE STA. 2+997.551
SEE SHEET NO. 10

MATCH LINE STA. 3+123.738
SEE SHEET NO. 14

E. 355th ST.

E. 357th ST.

E. 357th ST.

END WORK
STA. 0+960.000

END WORK
STA. 0+964.400

3	10/01	ALONG THE WESTERN PROPERTY LINE OF PCL 5 ALONG E355 ST. PCL 5T. DARKENED LINES FOR PROPOSED DRIVE CONSTRUCTION
2	9/24/99	ADJUSTED: PARCEL 30T. ADDED DRIVEWAY
1	6/14/99	UPDATED OWNER PCL 5, 7, 29, 30
REV.	DATE	DESCRIPTION

LAK - 640 - 2.865 (1.78)

12/21
180
189

H:\1998\98208\ROW\RWPL3.DWG