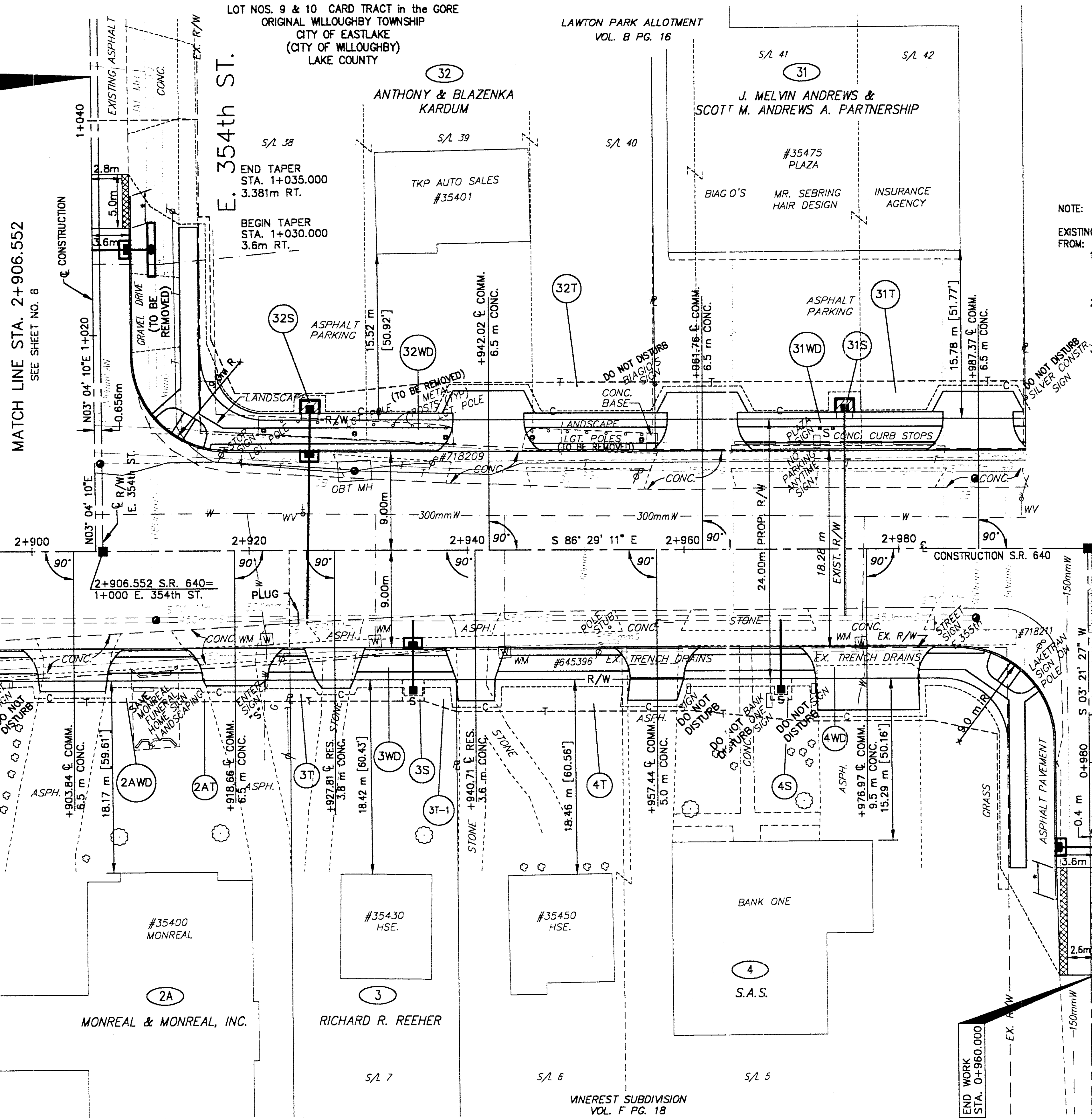


END WORK
STA. 1+044.000



MATCH LINE STA. 2+906.552
SEE SHEET NO. 8

E. 355th St.
MATCH LINE STA. 2+997.551
SEE SHEET NO. 12

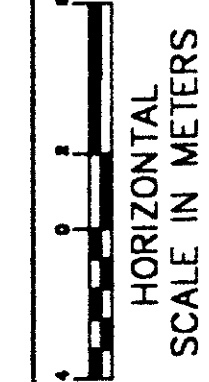
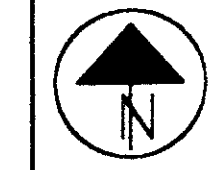
END TAPER
STA. 0+970.000
3.6m RT.

BEGIN TAPER
STA. 0+960.000
3.72m RT.

- NOTE:
EXISTING RIGHT-OF-WAY LOCATION AND WIDTH HAS BEEN DETERMINED FROM:
1. PRIOR SETS OF PLANS OF WINE STREET IMPROVEMENTS, (LAK-91-3.84 & LAK-2-0.00) ARE FILED AT THE O.D.O.T. DISTRICT 12 OFFICE.
 2. PRIOR CENTERLINE SURVEY, DATED JULY 1990, BY BURGESS AND NIPLÉ LIMITED, RECORDED IN THE LAKE COUNTY MAP RECORDS V-14, PG. 22.
 3. SURVEY BY GILLS, GUARD AND JOHNSON, INC., DATED AUG. 1995.

LOT NOS. 9 & 10 CARD TRACT in the GORE
ORIGINAL WILLOUGHBY TOWNSHIP
CITY OF EASTLAKE
(CITY OF WILLOUGHBY)
LAKE COUNTY

LAWTON ALLOTMENT
VOL. B PG. 16



FEDERAL
PROJECT NO.
14199

STATE
PROJECT NO.
126430

RIGHT OF WAY PLAN
STA. 2+906.552 TO STA. 2+997.551

LAK - 640 - 2.865 (1.78)

10 / 21

178
189