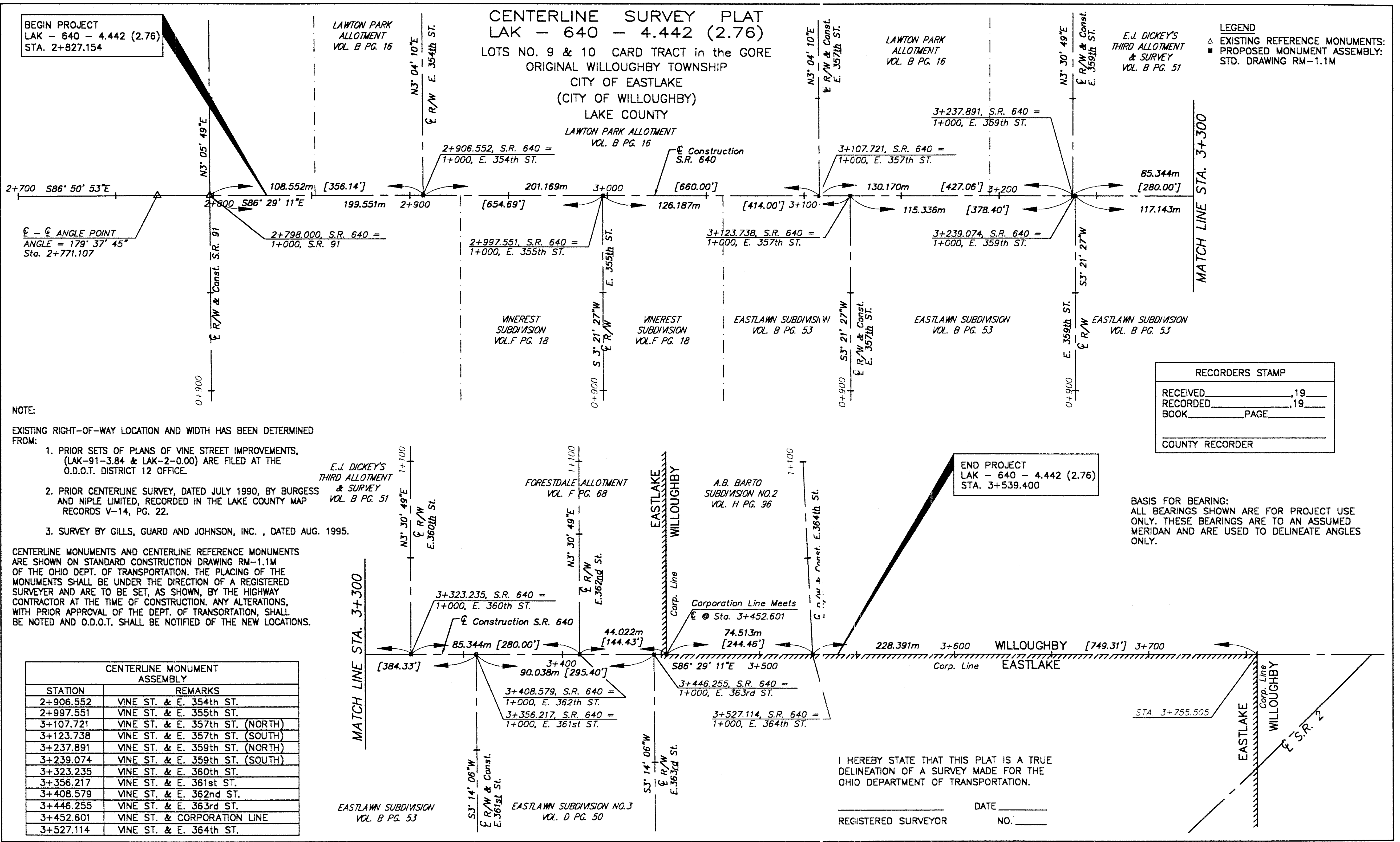


CALC. BY: \_\_\_\_\_  
CHECKED BY: \_\_\_\_\_

FEDERAL PROJECT NO. **14199**

CENTERLINE SURVEY PLAT

LAK - 640 - 4.442 (2.76)



BEGIN PROJECT  
LAK - 640 - 4.442 (2.76)  
STA. 2+827.154

CENTERLINE SURVEY PLAT  
LAK - 640 - 4.442 (2.76)

LOTS NO. 9 & 10 CARD TRACT in the GORE  
ORIGINAL WILLOUGHBY TOWNSHIP  
CITY OF EASTLAKE  
LAKE COUNTY

LEGEND  
△ EXISTING REFERENCE MONUMENTS:  
■ PROPOSED MONUMENT ASSEMBLY:  
STD. DRAWING RM-1.1M

∠ - ∠ ANGLE POINT  
ANGLE = 179° 37' 45"  
Sta. 2+771.107

NOTE:

- EXISTING RIGHT-OF-WAY LOCATION AND WIDTH HAS BEEN DETERMINED FROM:
1. PRIOR SETS OF PLANS OF VINE STREET IMPROVEMENTS, (LAK-91-3.84 & LAK-2-0.00) ARE FILED AT THE O.D.O.T. DISTRICT 12 OFFICE.
  2. PRIOR CENTERLINE SURVEY, DATED JULY 1990, BY BURGESS AND NIPLE LIMITED, RECORDED IN THE LAKE COUNTY MAP RECORDS V-14, PG. 22.
  3. SURVEY BY GILLS, GUARD AND JOHNSON, INC., DATED AUG. 1995.

CENTERLINE MONUMENTS AND CENTERLINE REFERENCE MONUMENTS ARE SHOWN ON STANDARD CONSTRUCTION DRAWING RM-1.1M OF THE OHIO DEPT. OF TRANSPORTATION. THE PLACING OF THE MONUMENTS SHALL BE UNDER THE DIRECTION OF A REGISTERED SURVEYOR AND ARE TO BE SET, AS SHOWN, BY THE HIGHWAY CONTRACTOR AT THE TIME OF CONSTRUCTION. ANY ALTERATIONS, WITH PRIOR APPROVAL OF THE DEPT. OF TRANSPORTATION, SHALL BE NOTED AND O.D.O.T. SHALL BE NOTIFIED OF THE NEW LOCATIONS.

CENTERLINE MONUMENT ASSEMBLY	
STATION	REMARKS
2+906.552	VINE ST. & E. 354th ST.
2+997.551	VINE ST. & E. 355th ST.
3+107.721	VINE ST. & E. 357th ST. (NORTH)
3+123.738	VINE ST. & E. 357th ST. (SOUTH)
3+237.891	VINE ST. & E. 359th ST. (NORTH)
3+239.074	VINE ST. & E. 359th ST. (SOUTH)
3+323.235	VINE ST. & E. 360th ST.
3+356.217	VINE ST. & E. 361st ST.
3+408.579	VINE ST. & E. 362nd ST.
3+446.255	VINE ST. & E. 363rd ST.
3+452.601	VINE ST. & CORPORATION LINE
3+527.114	VINE ST. & E. 364th ST.

RECORDERS STAMP

RECEIVED \_\_\_\_\_, 19\_\_\_\_

RECORDED \_\_\_\_\_, 19\_\_\_\_

BOOK \_\_\_\_\_ PAGE \_\_\_\_\_

COUNTY RECORDER

BASIS FOR BEARING:  
ALL BEARINGS SHOWN ARE FOR PROJECT USE ONLY. THESE BEARINGS ARE TO AN ASSUMED MERIDIAN AND ARE USED TO DELINEATE ANGLES ONLY.

I HEREBY STATE THAT THIS PLAT IS A TRUE DELINEATION OF A SURVEY MADE FOR THE OHIO DEPARTMENT OF TRANSPORTATION.

REGISTERED SURVEYOR \_\_\_\_\_ DATE \_\_\_\_\_  
NO. \_\_\_\_\_