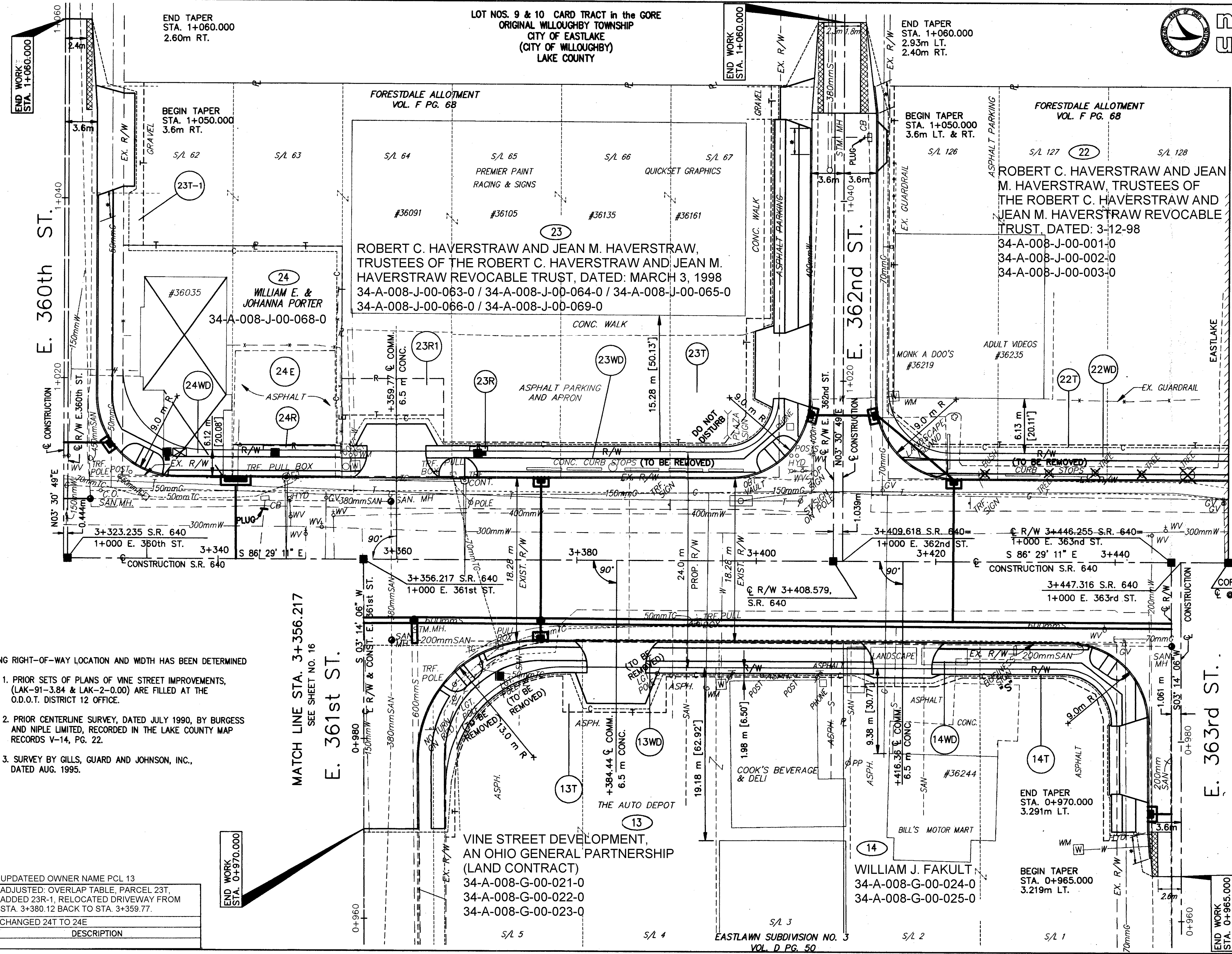


LOT NOS. 9 & 10 CARD TRACT in the GORE ORIGINAL WILLOUGHBY TOWNSHIP CITY OF EASTLAKE (CITY OF WILLOUGHBY) LAKE COUNTY



END TAPER STA. 1+060.000 2.60m RT.

END TAPER STA. 1+060.000 2.93m LT. 2.40m RT.

BEGIN TAPER STA. 1+050.000 3.6m RT.

BEGIN TAPER STA. 1+050.000 3.6m LT. & RT.

ROBERT C. HAVERSTRAW AND JEAN M. HAVERSTRAW, TRUSTEES OF THE ROBERT C. HAVERSTRAW AND JEAN M. HAVERSTRAW REVOCABLE TRUST, DATED: MARCH 3, 1998
34-A-008-J-00-063-0 / 34-A-008-J-00-064-0 / 34-A-008-J-00-065-0 / 34-A-008-J-00-066-0 / 34-A-008-J-00-069-0

ROBERT C. HAVERSTRAW AND JEAN M. HAVERSTRAW, TRUSTEES OF THE ROBERT C. HAVERSTRAW AND JEAN M. HAVERSTRAW REVOCABLE TRUST, DATED: 3-12-98
34-A-008-J-00-001-0
34-A-008-J-00-002-0
34-A-008-J-00-003-0

3+356.217 S.R. 640
1+000 E. 361st ST.

3+409.618 S.R. 640
1+000 E. 362nd ST.

3+447.316 S.R. 640
1+000 E. 363rd ST.

MATCH LINE STA. 3+452.601
SEE SHEET NO. 20

NOTE:

EXISTING RIGHT-OF-WAY LOCATION AND WIDTH HAS BEEN DETERMINED FROM:

1. PRIOR SETS OF PLANS OF VINE STREET IMPROVEMENTS, (LAK-91-3.84 & LAK-2-0.00) ARE FILLED AT THE O.D.O.T. DISTRICT 12 OFFICE.
2. PRIOR CENTERLINE SURVEY, DATED JULY 1990, BY BURGESS AND NIPLE LIMITED, RECORDED IN THE LAKE COUNTY MAP RECORDS V-14, PG. 22.
3. SURVEY BY GILLS, GUARD AND JOHNSON, INC., DATED AUG. 1995.

MATCH LINE STA. 3+356.217
SEE SHEET NO. 16
E. 361st ST.

END WORK STA. 0+970.000

END WORK STA. 0+965.000

3	02/09/2000	UPDATED OWNER NAME PCL 13
2	09/24/99	ADJUSTED: OVERLAP TABLE, PARCEL 23T, ADDED 23R-1, RELOCATED DRIVEWAY FROM STA. 3+380.12 BACK TO STA. 3+359.77.
1	6/14/99	CHANGED 24T TO 24E
REV.	DATE	DESCRIPTION
DATE COMPLETED		

VINE STREET DEVELOPMENT, AN OHIO GENERAL PARTNERSHIP (LAND CONTRACT)
34-A-008-G-00-021-0
34-A-008-G-00-022-0
34-A-008-G-00-023-0

WILLIAM J. FAKULT
34-A-008-G-00-024-0
34-A-008-G-00-025-0

H:\1998\98208\ROW\RWPL6.DWG